

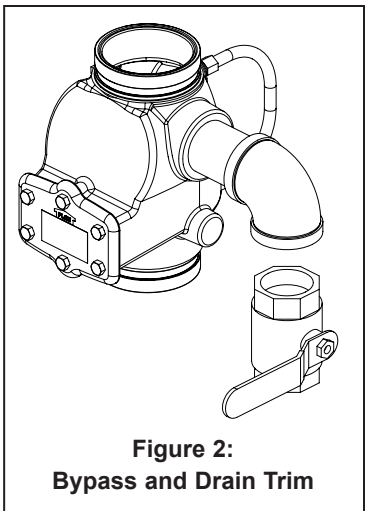
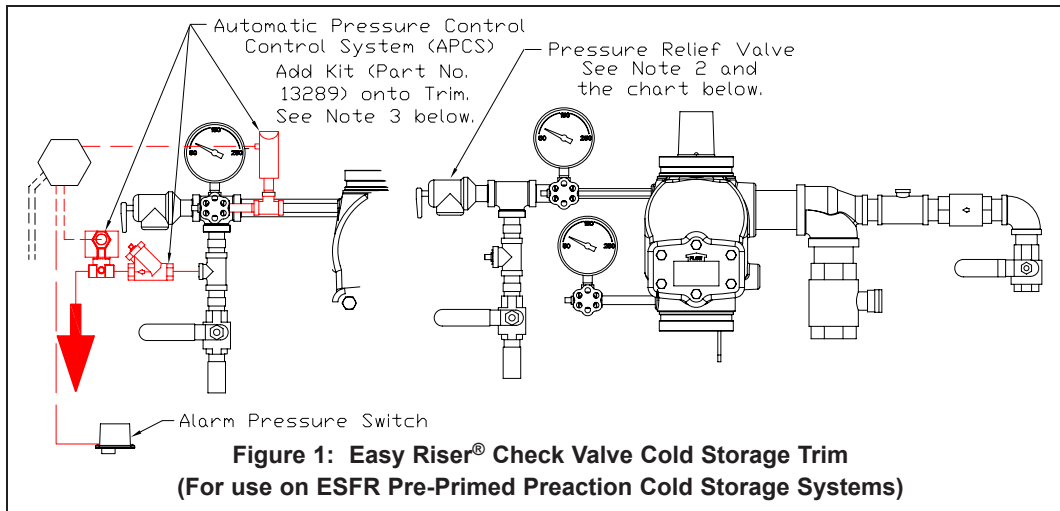


TECHNICAL DATA

EASY RISER® CHECK VALVE COLD STORAGE TRIM

MAXIMUM 250 PSI WWP

The Viking Corporation, 210 N Industrial Park Drive, Hastings MI 49058
Telephone: 269-945-9501 Technical Services 877-384-5464 Fax: 269-818-1680 Email: techsvcs@vikingcorp.com



Trim Chart (page 48b) is for use with the following Viking Trim Sets	
Valve Size	Standard Trim Part No.
4", 6" & 8" (DN100, DN150, & DN200)	14032
Pre-Primed Preaction Trim Set for Easy Riser® Check Valves include galvanized nipples, fittings and supervisory pressure switch. (See Trim Chart Notes).	

Viking P/N	Pressure Set Rating
7000050-175	175 PSI (12 bar)
7000050-185	185 PSI (12.8 bar)
7000050-195	195 PSI (13.5 bar)
7000050-200	200 PSI (13.8 bar)
7000050-205	205 PSI (14.1 bar)
NOTE: Relief valves open at approximately 90-105% of setting and close at 80% of setting.	

Trim Chart (page 48d) is for use with the following Viking Trim Sets	
Valve Size	Standard Trim Part No.
4" (DN100)	14044
6" (DN150)	14045
8" (DN200)	14046
Bypass and Drain Trim Set for Easy Riser® Check Valves include galvanized nipples and fittings. (See Trim Chart Notes).	

Notes: For use with Trim Chart on Page 48b

General Notes:

- Valve must be trimmed as shown. Any deviation from trim size or arrangement may affect the proper operation of the valve.
- All pipe and fittings shall be galvanized steel, except when other materials are specified in the Technical Data for the system used. All trim components must be listed for up to 250 PSI (17 bar) Water Working Pressure.
- Dimensions in parentheses are millimeter and may be approximations.
- Refer to Freezer Storage technical data for more specific details on the use of this trim in cold storage applications.

Note 1: 300 PSI (20.7 bar) water pressure gauges are provided with trim. 600 PSI (41.4 bar) water pressure gauges are available. Order separately when needed*. Refer to current Viking Price Book.

Note 2: Pressure relief valve must be selected based on height position of the valve and static pressure to restrict pressure at the sprinkler to its rated pressure. The pressure relief valve shall be selected so as to not open at the flowing pressure. The relief valve shall be ordered separately.

Note 3: In systems where the temperature can fluctuate, the Automatic Pressure Control System (APCS) can be used to maintain a safe operating pressure below the set point of the Pressure Relief Valve and above the maximum set pressure of the system pressure switch.

Note 4: Location for sprinkler system pressure switch for use with ESFR Pre-Primed Preaction Cold Storage System.

*NFPA 13 requires gauges to have a minimum limit not less than twice the normal water working pressure at the point where the gauges are installed. When normal water working pressure exceeds 150 PSI (38.1 bar), order 600 PSI (41.4 bar) water pressure gauges separately.



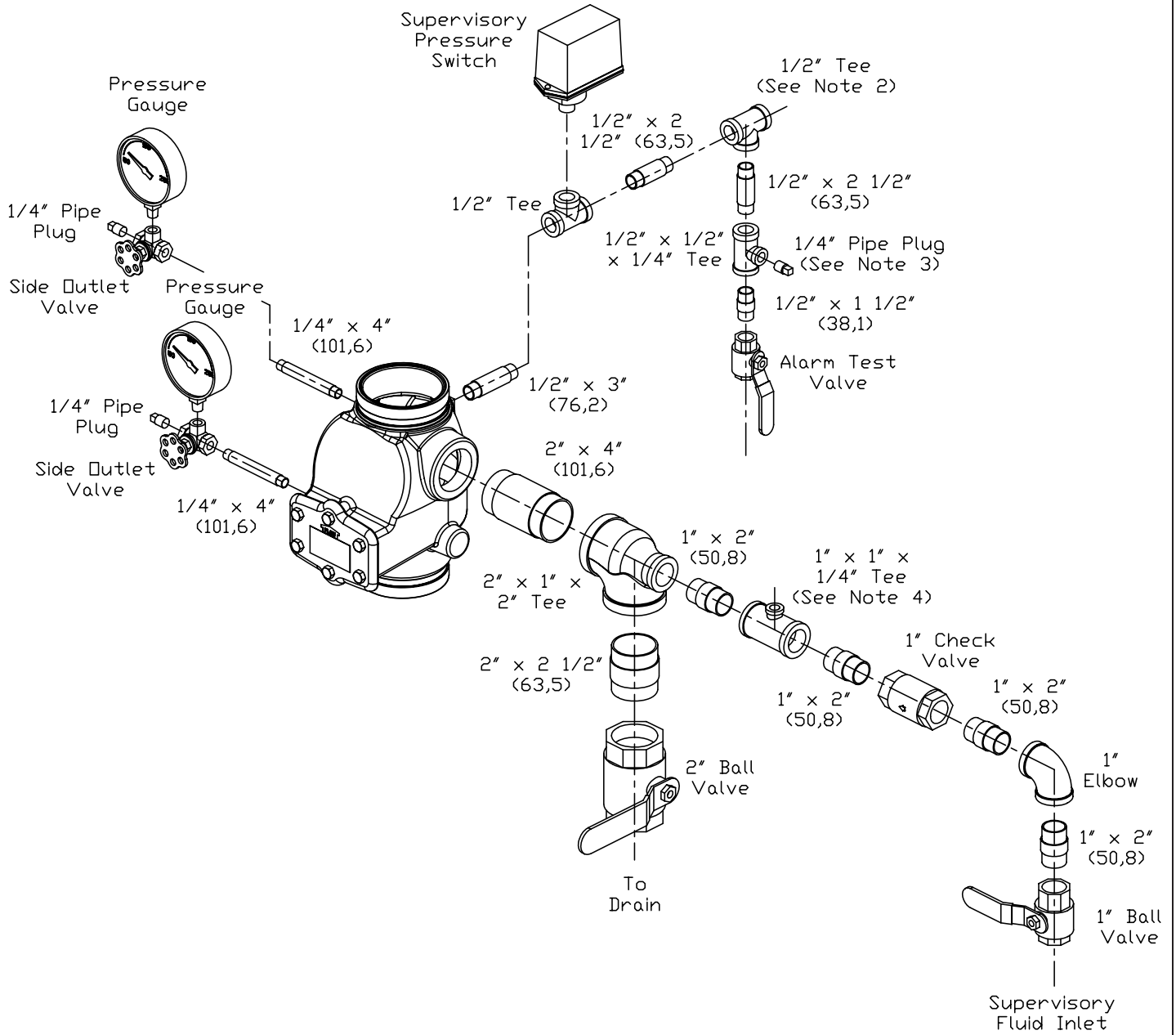
TECHNICAL DATA

EASY RISER® CHECK VALVE COLD STORAGE TRIM MAXIMUM 250 PSI WWP

The Viking Corporation, 210 N Industrial Park Drive, Hastings MI 49058

Telephone: 269-945-9501 Technical Services 877-384-5464 Fax: 269-818-1680 Email: techsvcs@vikingcorp.com

Refer to page 48a
for General Notes
and Notes 1 through 4.



**Order Easy Riser®
Check Valve Separately**

Figure 3



TECHNICAL DATA

EASY RISER® CHECK VALVE COLD STORAGE TRIM MAXIMUM 250 PSI WWP

The Viking Corporation, 210 N Industrial Park Drive, Hastings MI 49058

Telephone: 269-945-9501 Technical Services 877-384-5464 Fax: 269-818-1680 Email: techsvcs@vikingcorp.com

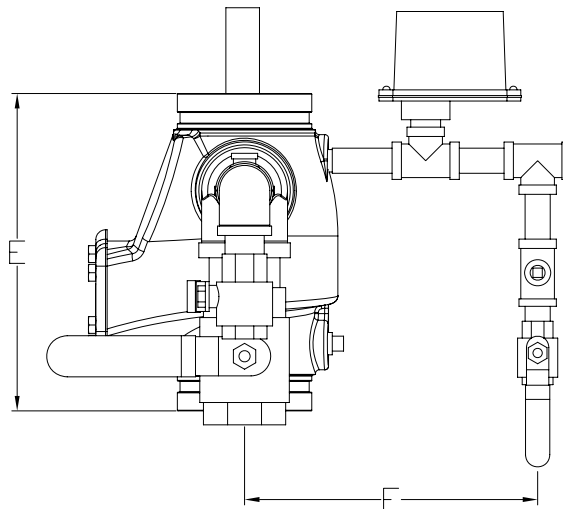
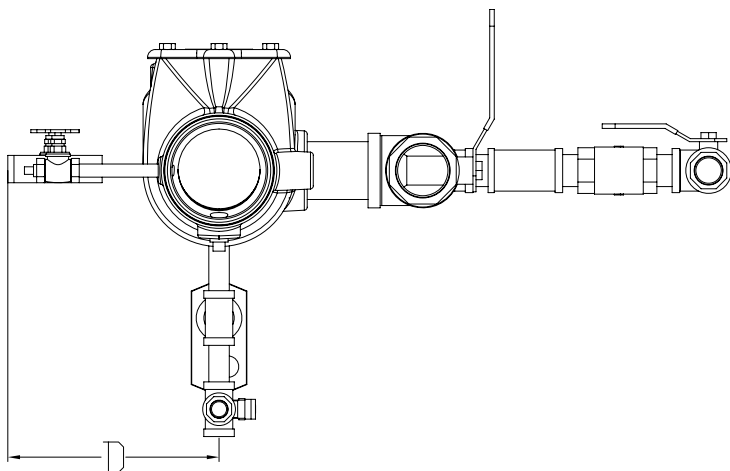
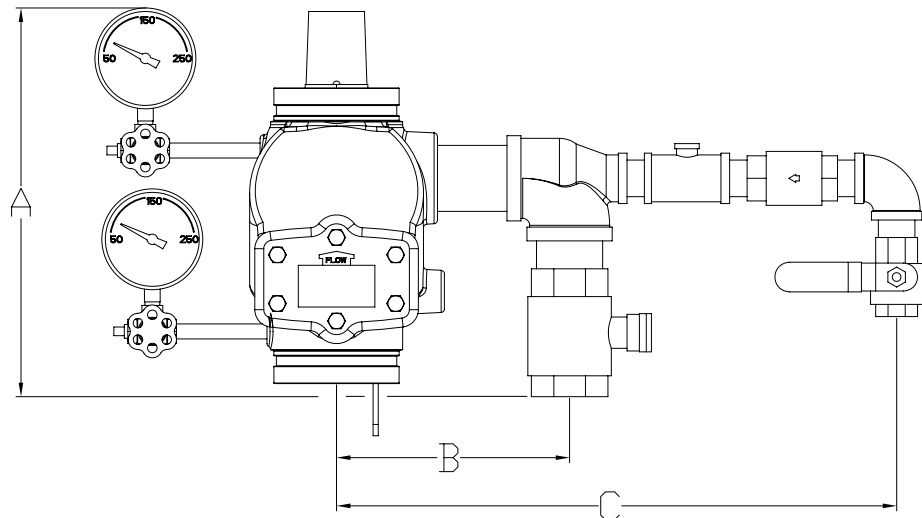
EASY RISER® CHECK VALVE WITH COLD STORAGE TRIM

This trim is for use on Viking ESFR Pre-Primed Single Interlock Preaction Cold Storage Systems.

Easy Riser® Check Valve, APCS, Trim and Pressure Relief Valve must be ordered separately. Refer to Technical Data.

All dimensions are approximations. Dimensions in parentheses are millimeter.

Refer to Freezer Storage technical data for more specific details on the use of this trim in cold storage applications.



SIZE	A	B	C	D	E	F
4" (DN100)	14" (355.6 mm)	8-3/8" (212.7 mm)	20-1/8" (511.1 mm)	8-11/16" (220.6 mm)	10-5/8" (269.8 mm)	9-13/16" (249.2 mm)
6" (DN150)	16-1/8" (409.5 mm)	9-1/8" (231.7 mm)	20-7/8" (530.2 mm)	9-11/16" (246.0 mm)	13-3/8" (339.7 mm)	10-9/16" (268.2 mm)
8" (DN200)	19" (485.7 mm)	10-1/8" (257.1 mm)	21-7/8" (555.6 mm)	10-11/16" (271.4 mm)	17" (431.8 mm)	11-11/16" (296.8 mm)

Figure 4

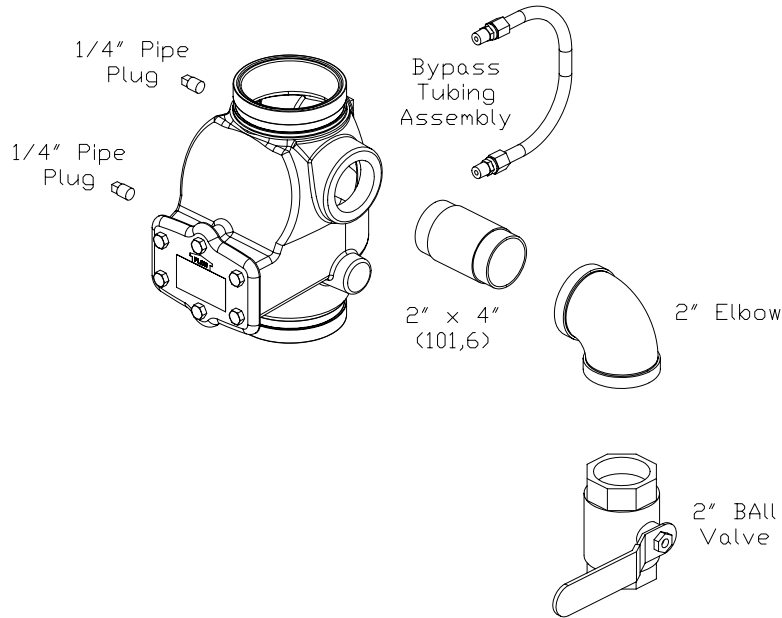


TECHNICAL DATA

EASY RISER® CHECK VALVE COLD STORAGE TRIM MAXIMUM 250 PSI WWP

The Viking Corporation, 210 N Industrial Park Drive, Hastings MI 49058

Telephone: 269-945-9501 Technical Services 877-384-5464 Fax: 269-818-1680 Email: techsvcs@vikingcorp.com

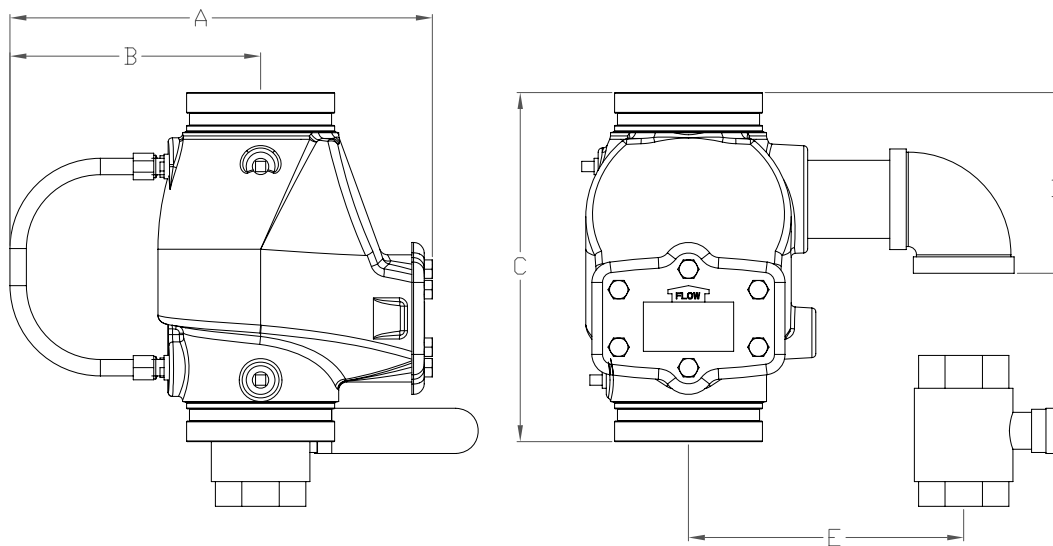


EASY RISER® CHECK VALVE WITH BYPASS AND DRAIN TRIM

Trim is used to control thermal transfer to ESRF Cold Storage Systems.

Bypass is used to monitor supervisory system pressure above and below clapper.

Do not use this trim set to stop liquid flow in the reverse direction.



SIZE	A	B	C	D	E
4" (DN100)	12" (326.2 mm)	7-5/8" (193.6 mm)	10-5/8" (269.8 mm)	5-1/2" (139.7 mm)	8-3/8" (212.7 mm)
6" (DN150)	15-7/16" (392.1 mm)	8-5/8" (219.0 mm)	13-3/8" (339.7 mm)	5-1/2" (139.7 mm)	9-1/8" (231.7 mm)
8" (DN200)	18-7/16" (468.3 mm)	9-5/8" (244.4 mm)	17" (431.8 mm)	10-15/16" (277.8 mm)	10-1/8" (257.1 mm)

Figure 5