



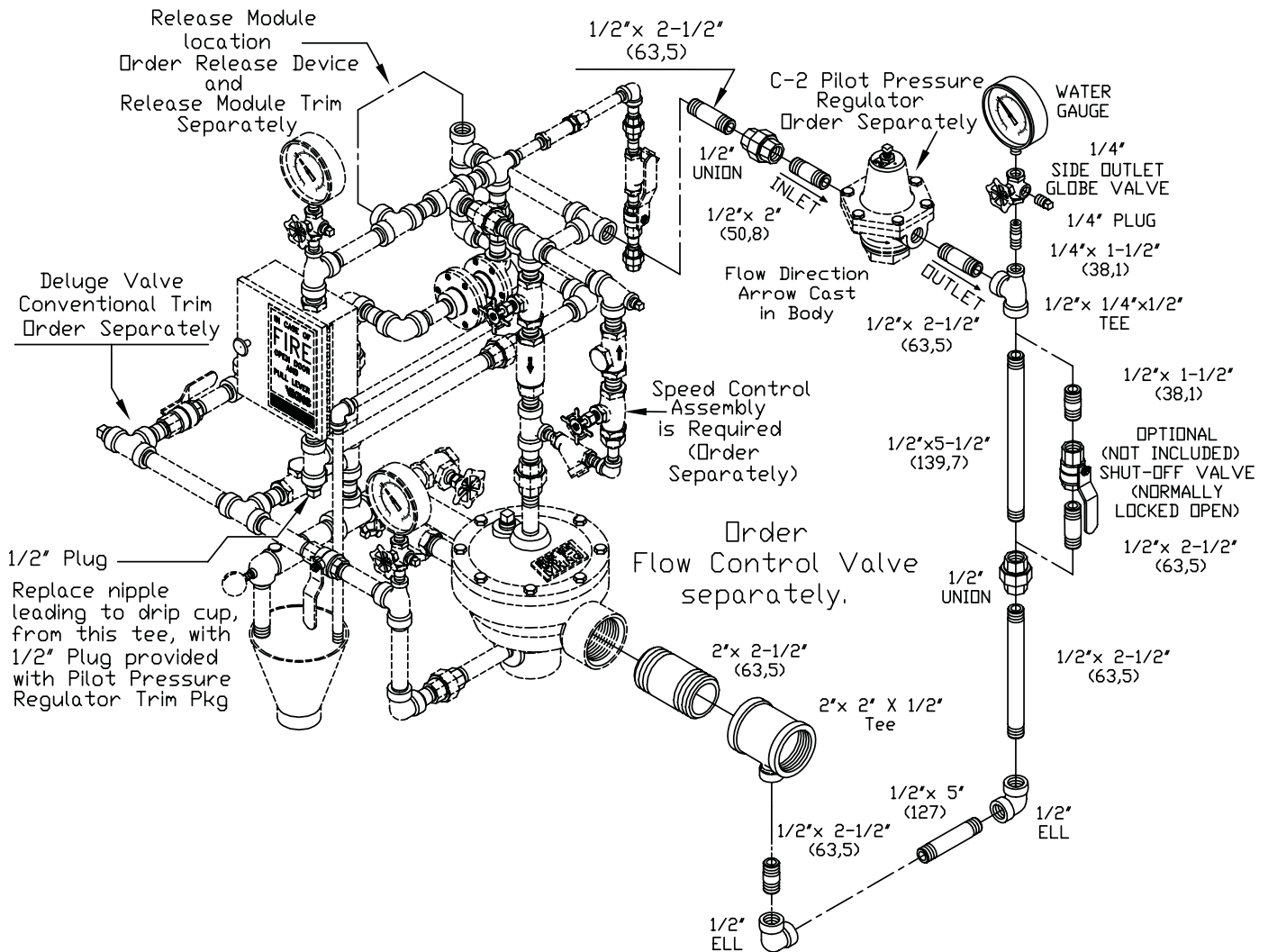
TECHNICAL DATA

**MODEL C-2 PILOT
REGULATOR TRIM
ANGLE STYLE VALVES**

Galvanized Trim Part Number	Brass Trim Part Number
09066	11188*
* Note - Nipple length for brass trim may vary from those shown on trim chart.	

**Pilot Regulator Trim
2" Angle Style Flow Control Valve equipped
with Deluge Valve Conventional Trim and
Speed Control Assembly**

WARNING:
To ensure proper operation of the Pilot Pressure Regulator Valve, the adjustment screw must engage the pressure spring. See (8.) Installation Instructions on page 531a-b for proper pressure setting of discharge pressure and application.





TECHNICAL DATA

MODEL C-2 PILOT REGULATOR TRIM ANGLE STYLE VALVES

Galvanized Trim Part Number	Brass Trim Part Number
09068	11183*

* Note - Nipple length for brass trim may vary from those shown on trim chart.

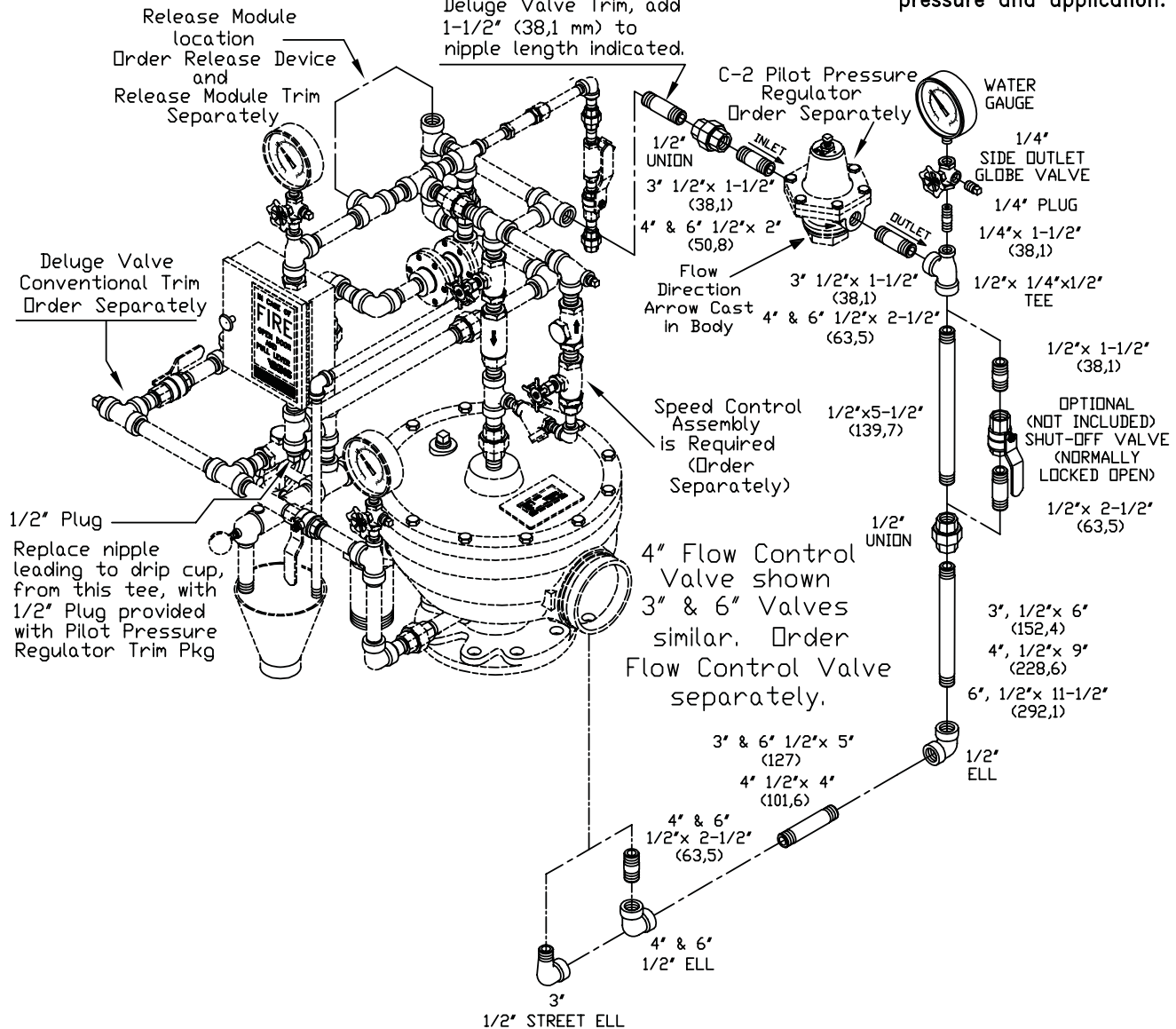
Pilot Regulator Trim

3", 4" & 6" Angle Style Flow Control Valve equipped with Deluge Valve Conventional Trim and Speed Control Assembly

- 3" 1/2"x 1-1/2" * (38,1)
- 4" 1/2"x 2-1/2" * (63,5)
- 6" 1/2"x 7-1/2" * (190,5)

*Exception:
For Flow Control Valves equipped with FACTORY PREASSEMBLED Conventional Deluge Valve Trim, add 1-1/2" (38,1 mm) to nipple length indicated.

WARNING:
To ensure proper operation of the Pilot Pressure Regulator Valve, the adjustment screw must engage the pressure spring. See (8.) Installation Instructions on page 531a-b for proper pressure setting of discharge pressure and application.





TECHNICAL DATA

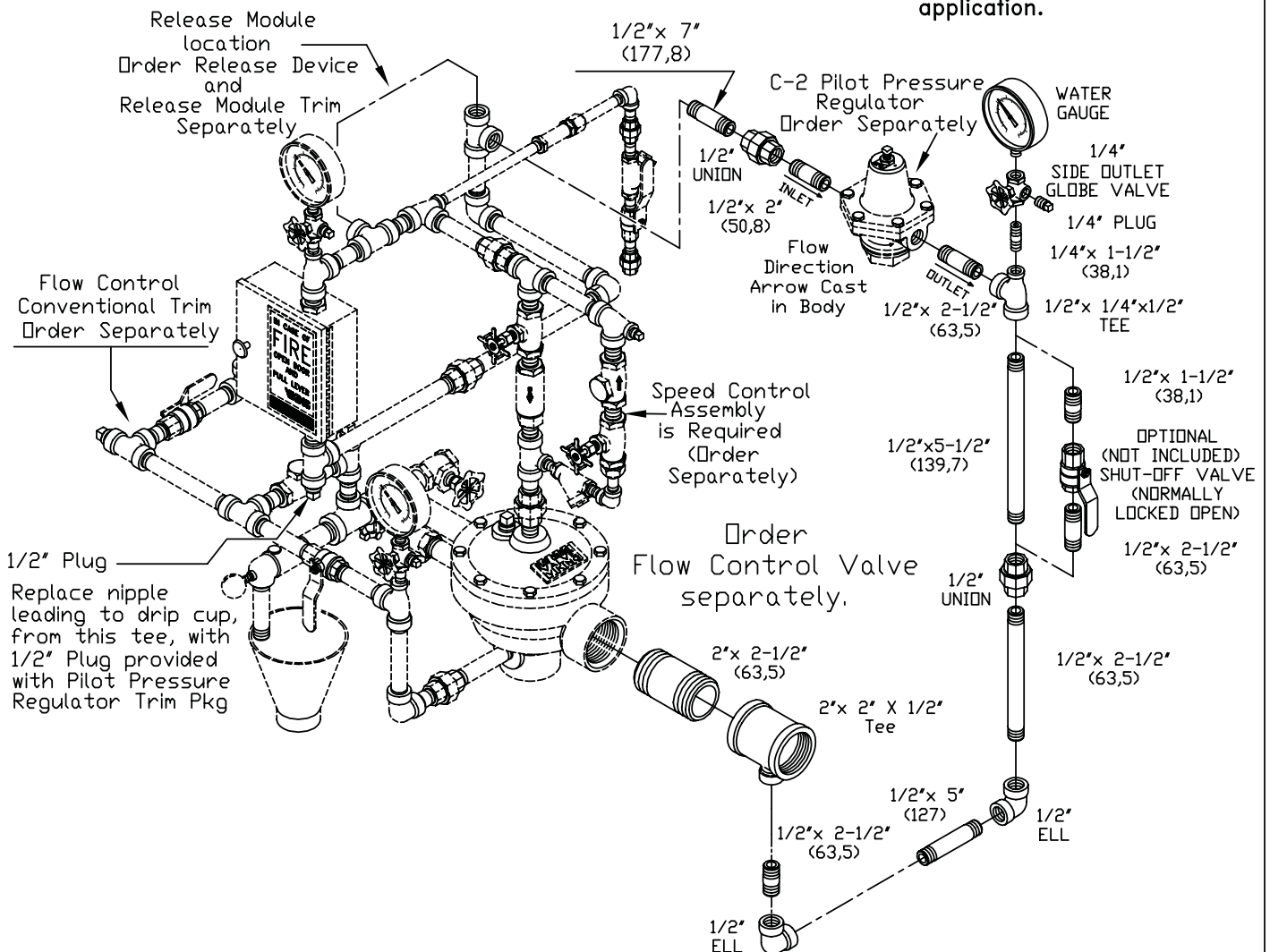
MODEL C-2 PILOT REGULATOR TRIM ANGLE STYLE VALVES

Galvanized Trim Part Number	Brass Trim Part Number
09066	11188*

* Note - Nipple length for brass trim may vary from those shown on trim chart.

Pilot Regulator Trim 2" Angle Style Flow Control Valve equipped with Flow Control Conventional Trim and Speed Control Assembly

WARNING:
To ensure proper operation of the Pilot Pressure Regulator Valve, the adjustment screw must engage the pressure spring. See (8.) Installation Instructions on page 531a-b for proper pressure setting of discharge pressure and application.



VIKING®

TECHNICAL DATA

MODEL C-2 PILOT
REGULATOR TRIM
ANGLE STYLE VALVES

Galvanized Trim Part Number	Brass Trim Part Number
09067	11183*
* Note - Nipple length for brass trim may vary from those shown on trim chart.	

Pilot Regulator Trim

3", 4" & 6" Angle Style Flow Control Valve equipped with Flow Control Conventional Trim and Speed Control Assembly

- 3" 1/2" x 6" * (152,4)
- 4" 1/2" x 6-1/2" * (165,1)
- 6" 1/2" x 12" * (304,5)

***Exception:**
For Flow Control Valves equipped with FACTORY PREASSEMBLED Conventional Flow Control Trim, add:

- 2-1/2" (63,5 mm) to nipple length indicated for 3" valve.
- 3-1/2" (88,9 mm) to nipple length indicated for 4" valve.
- 1-1/2" (38,1 mm) to nipple length indicated for 6" valve.

WARNING:
To ensure proper operation of the Pilot Pressure Regulator Valve, the adjustment screw must engage the pressure spring. See (8.) Installation Instructions on page 531a-b for proper pressure setting of discharge pressure and application.

