

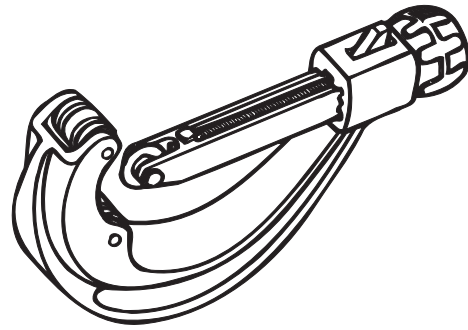


## Wheel Cutters for CPVC Pipe

# Tools for CPVC Pipe

### Technical Features

- **Sizes Available (Pipe Capacity) :**  $\frac{1}{8}$ "- $1\frac{5}{16}$ " (3-33 mm),  $\frac{1}{4}$ "- $2\frac{5}{8}$ " (6-63 mm) and  $\frac{3}{8}$ "- $3\frac{1}{2}$ " (10-90 mm).
- **Features :** All models employ a quick-release mechanism for speed and ease of use.



### Wheel Cutters for CPVC Pipe

### Physical Data

O.D. Capacity		Length		Weight		Spare Wheel (Part Number)	Part Number
Actual inches	Actual Ø mm	inch	mm	lbs.	kg.		
$\frac{1}{8}$ " - $1\frac{5}{8}$ "	3 - 33	6.0	152,00	0.6	0,3	04184*	04114
$\frac{1}{4}$ " - $2\frac{5}{8}$ "	6 - 63	8.0	203,0	1.2	0,5	04184*	04124
$\frac{3}{8}$ " - $3\frac{1}{2}$ "	10 - 90	11.0	279,0	2.5	1,1	04194**	04134

\* Spare Wheels ordered separately - Wall thickness capacity of cutter: 0.280" / 7,1mm  
 \*\* Spare Wheels ordered separately - Wall thickness capacity of cutter: 0.377" / 9,6mm

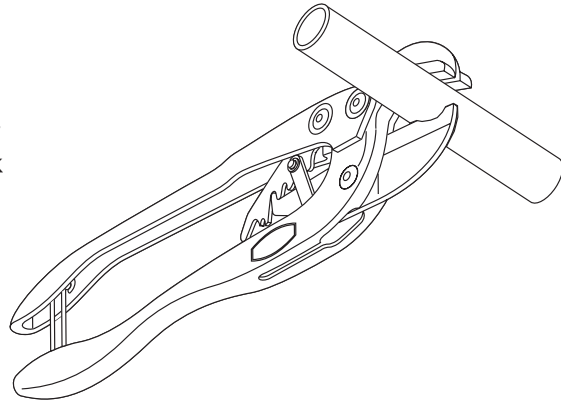


## Ratchet Cutters for CPVC Pipe

# Tools for CPVC Pipe

### Technical Features

- **Sizes Available (Pipe Capacity) :** 1.7" (42 mm) and 2.4" (63 mm).
- **Features :** 04176 has 7-step ratchet mechanism for smooth operation. 04177 has a 2" capacity with v-style jaws for easy alignment and a long handle to maximise leverage for thick wall pipe. Blades are easily replaced.



Model 04176

### Ratchet Cutters for CPVC Pipe

### Physical Data

Capacity		Length		Weight		Spare Blade (Part Number)	Part Number
Actual inches	Actual Ø mm	inch	mm	lbs.	kg.		
1.7	42	8.3	210,00	0.8	0,4	94175*	04176
2.4	63	17.0	440,0	2.8	1,3	94176*	04177

\* Spare Blades ordered separately

### Ratchet Cutters for CPVC Pipe

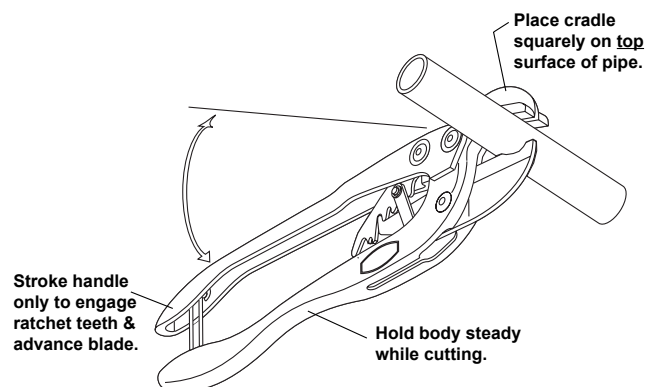
### Operating Instructions

#### Helpful Hints:

- The blade pivot bolt assembly must be adjusted so the blade is snug and the locknut must be kept locked tight for proper operation of the ratchet. After initial wear in, readjust. Loosen locknut, tighten pivot bolt, tighten locknut.
- To prevent cracking of cold pipe, warm the pipe and use slow, even strokes.
- Light oil on mechanism prevents rusting and reduces friction.
- Rotate shears slightly around very flexible thin pipe or tubing to assist in cutting.

#### Warning!

- Keep fingers clear when pulling handles apart and when cutting.
- Wear eye protection when cutting cold or brittle PVC or other hard plastic. Pipe can crack or shatter. To help prevent cracking, warm the pipe and use slow, even strokes.
- Store shears in closed and latched position to prevent damage to blade and body.



**NOTE:** For best results, use tool as shown above.

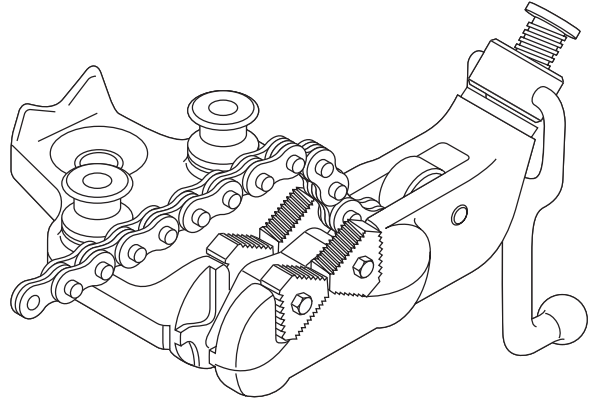


## Chain Vise for CPVC Pipe

# Tools for CPVC Pipe

### Technical Features

- Sizes Available (Pipe Capacity) : 1/8" - 4" (10 - 114 mm).
- Features : Rubber coated jaws to protect against damaging the CPVC pipe.



### Chain Vise for CPVC Pipe

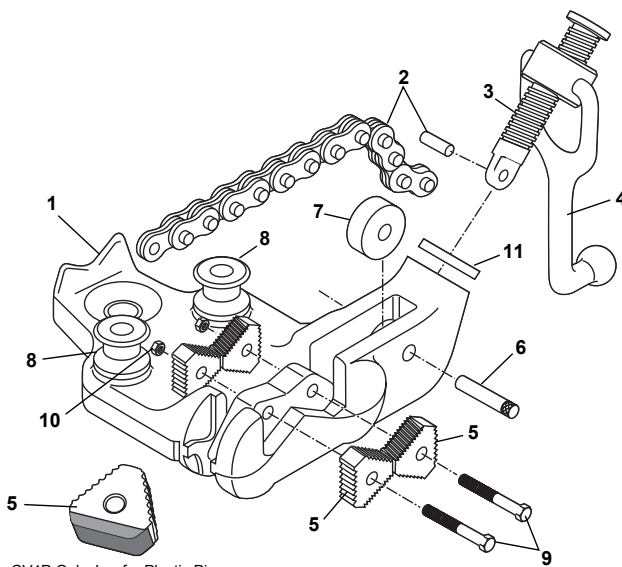
### Physical Data

Pipe Capacity		Weight		Spare Jaws (Part Number)	Part Number
Actual inches	Actual Ø mm	lbs.	kg.		
1/8" - 4"	10 - 114	14.6	6,6	94452*	04452

\* Spare Jaws ordered separately

### Chain Vise for CPVC Pipe

### Parts List



CV4P Only Jaw for Plastic Pipe

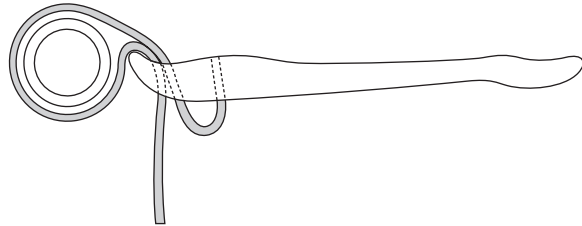
Item	Description
1	Base
2	Chain & Pin
3	Screw Assembly
4	Screw Handle
5	Jaw
6	Roller Pin
7	Roller
8	Spool
9	Jaw Bolt
10	Hex Nut
11	Screw Washer



## Strap Wrench for CPVC Pipe

### Technical Features

- **Size Available (Pipe Capacity) :** 1/8" - 2" (10 - 63 mm).
- **Features :** Enables CPVC pipe to be gripped without scratching. Coated polyester strap provides slip resistance, strength and durability.



### Strap Wrench for CPVC Pipe

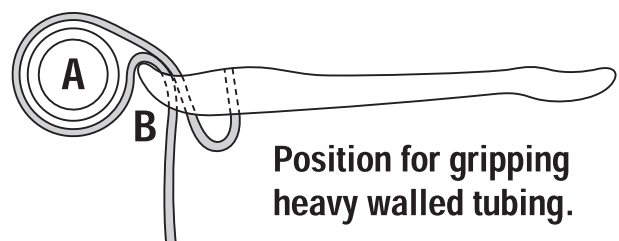
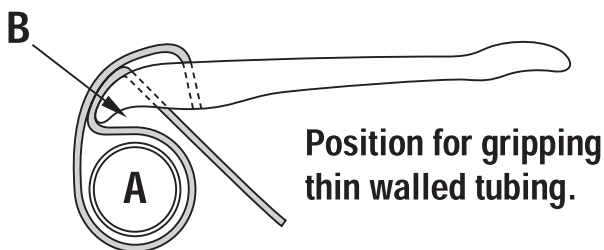
### Physical Data

Pipe Capacity		Tube Capacity		Handle Length		Weight		Spare Strap (Part Number)	Part Number
Actual inches	Actual Ø mm	Actual inches	Actual Ø mm	inch	mm	lbs.	kg.		
1/8" - 2"	10 - 63	7.5	190,0	12.0	305,0	1.6	0,7	92247*	02247

\* Spare Strap ordered separately - Size 1.25" x 30" (31,35mm x 762mm)

### Strap Wrench for CPVC Pipe

### Operating Instructions



The picture above — along with the directions below — explain how to operate the Strap Wrench for turning in a clockwise rotation. For counterclockwise operation, simply reverse the handle 180°.

Thread the strap as pictured above with the item you wish to turn in the area marked "A." Adjust the strap until the item to be turned rests 1/4" to 1/2" below the curved portion of the handle, as marked by "B." Turn the handle in the clockwise

direction. It should not be necessary to hold the strap when it is positioned correctly in the handle. Readjust for a new bite when necessary.

**\* Caution: Do not use this wrench beyond its pipe or tube capacity.**



## Deburring Tools for CPVC Pipe

# Tools for CPVC Pipe

### Technical Features

- **Sizes Available (Nominal Pipe Capacity) :**  
04436: Up to 2" (60 mm).  
04430: 1 1/4", 1 1/2", 2", 2 1/2", 3", 4" (42, 50, 63, 75, 90 and 114 mm)
- **Features :**  
04436: Deburrs inner and outer edges of CPVC pipe up to 2" (60mm) in diameter.  
04430: Quickly deburrs outer edges of CPVC pipe from 1 1/4" to 4" (42 - 114 mm) in diameter. Produces a smooth 3/32" 15° chamfered pipe end to allow even spread of solvent when pipe is joined.



### Deburring Tools for CPVC Pipe

### Physical Data

Nominal Pipe Capacity		Weight		Part Number
Actual inches	Actual Ø mm	lbs.	kg.	
Up to 2"	Up to 60 mm	0.2	0,09	04436
1 1/4", 1 1/2", 2", 2 1/2", 3", 4"	42, 50, 63, 75, 90 114	1.2	0,5	04124