

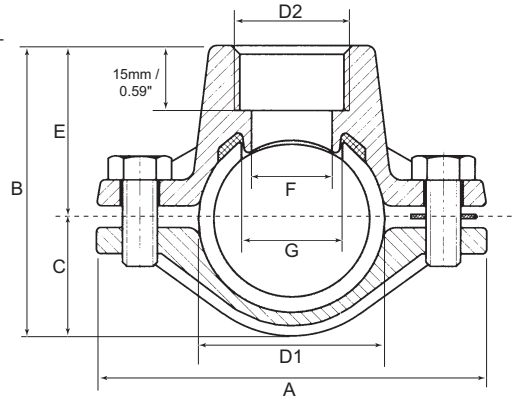


Sprinkler T

VT

Technical Features

- **Sizes available (Nominal) :**
Pipe Run: DN25/1", DN32/1 1/4", DN40/1 1/2" and DN50/2".
Outlet: DN10 3/8", DN15/1 1/2", DN20 3/4".
- **Pressure Data:**
Working pressure: 10 bar (145 psi)
- **Finish:** Galvanized
- **Connections :** female outlet threaded according to DIN 2999.

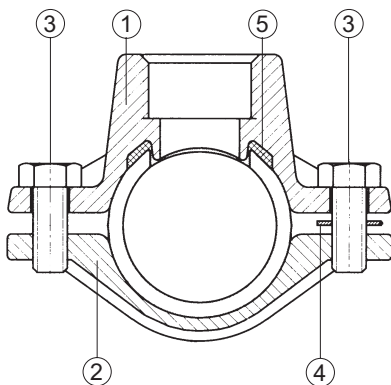


Grooved Products

Sprinkler T - VT

Physical Data

Pipe Run D1	Outlet D2		Hole Cut G (mm)	Dimensions (mm/in)					Reference	Box Quantity	Weight (ea.) (kg/lb) (approx.)	
	Metric	inch		A	B	C	E	F				
DN25	1"	DN25	3/8"	24 +0.5-0	84 / 3.3	57 / 2.2	21 / 0.8	36 / 1.4	15 / 0.59	VT01000037	50	0.4 / 0.9
		DN15	1/2"	24 +0.5-0	84 / 3.3	57 / 2.2	21 / 0.8	36 / 1.4	19 / 0.75	VT01000050	50	0.4 / 0.9
		DN20	3/4"	24 +0.5-0	84 / 3.3	57 / 2.2	21 / 0.8	36 / 1.4	19 / 0.75	VT01000075	50	0.4 / 0.9
		DN25	1"	24 +0.5-0	84 / 3.3	57 / 2.2	21 / 0.8	36 / 1.4	19 / 0.75	VT01000100	50	0.4 / 0.9
DN32	1 1/4"	DN25	3/8"	24 +0.5-0	91 / 3.6	65 / 2.6	25 / 1.0	40 / 1.6	15 / 0.59	VT012500037	50	0.4 / 0.9
		DN15	1/2"	24 +0.5-0	91 / 3.6	65 / 2.6	25 / 1.0	40 / 1.6	19 / 0.75	VT012500050	50	0.4 / 0.9
		DN20	3/4"	24 +0.5-0	91 / 3.6	65 / 2.6	25 / 1.0	40 / 1.6	19 / 0.75	VT012500075	50	0.4 / 0.9
		DN25	1"	24 +0.5-0	91 / 3.6	65 / 2.6	25 / 1.0	40 / 1.6	19 / 0.75	VT012500100	50	0.4 / 0.9
DN40	1 1/2"	DN25	3/8"	24 +0.5-0	97 / 3.8	71 / 2.8	28 / 1.1	43 / 1.7	15 / 0.59	VT01500037	50	0.4 / 0.9
		DN15	1/2"	24 +0.5-0	97 / 3.8	71 / 2.8	28 / 1.1	43 / 1.7	19 / 0.75	VT01500050	50	0.4 / 0.9
		DN20	3/4"	24 +0.5-0	97 / 3.8	71 / 2.8	28 / 1.1	43 / 1.7	19 / 0.75	VT01500075	50	0.4 / 0.9
		DN25	1"	24 +0.5-0	97 / 3.8	71 / 2.8	28 / 1.1	43 / 1.7	19 / 0.75	VT01500100	50	0.4 / 0.9
DN50	2"	DN25	3/8"	24 +0.5-0	109 / 4.3	84 / 3.3	35 / 1.4	49 / 1.9	15 / 0.59	VT02000037	50	0.5 / 1.1
		DN15	1/2"	24 +0.5-0	109 / 4.3	84 / 3.3	35 / 1.4	49 / 1.9	19 / 0.75	VT02000050	50	0.5 / 1.1
		DN20	3/4"	24 +0.5-0	109 / 4.3	84 / 3.3	35 / 1.4	49 / 1.9	19 / 0.75	VT02000075	50	0.5 / 1.1
		DN25	1"	24 +0.5-0	109 / 4.3	84 / 3.3	35 / 1.4	49 / 1.9	19 / 0.75	VT02000100	50	0.5 / 1.1



Sprinkler T - VT

Materials List

Item	Description	Material
1	Joining Element	Steel (Galvanized)
2	Half-Clamp	Steel (Galvanized)
3	Hexagonal Head Screw M8	Steel (Galvanized)
4	Lock Washer	Plastic
5	Gasket	EPDM

Sprinkler T - VT

Installation Instructions

Cut and de-burr hole (G), remove any chips from pipe. Tighten both bolts equally to a torque of approximately 10 nm (7.4 ft-lbs.)