

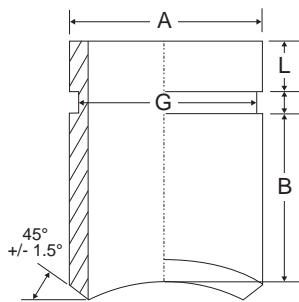
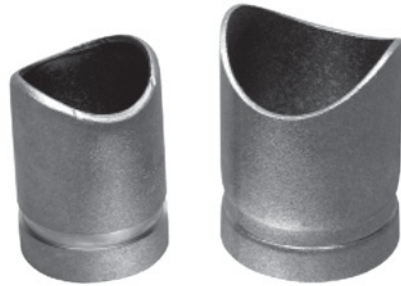


Manguitos de soldar ranurados por fresado o laminado

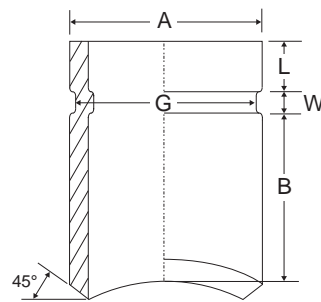
72C & 72R

Características técnicas

- **Diámetros nominales :**
72C : Tramo de tubería general: DN50/2" a DN250/10"
 Tramo de salida: DN50/2" a DN200/8"
72R : Tramo de tubería general: DN32/1 1/4" to DN200/8"
 Tramo de salida: DN32/1 1/4" to DN100/4"
- **Datos de presión:**
 Presión de trabajo: 21,7 bar (300 psi)*
 * La presión de trabajo correspondiente a tubería Schedule 40.
- **Conexiones :** Entrada soldada y salida con ranura, efectuada por fresado o laminado
- **Material :**
72C: Acero carbono Sch. 40 ASTM A106 o A53
72R: Acero carbono Sch. 10 ASTM A795
- **Especificaciones :** Cumple los requerimientos de NFPA13



72C



72R

Manguitos de soldar ranurados por fresado o laminado - 72C

Datos físicos

| Referencia | Diám salida mm / in | Tubería in | A mm / in | B mm / in | L mm / in | W mm / in | G mm / in | Peso Kgs / Lbs | Diám recomendado del orificio | | |
|---------------|------------------------|---------------|----------------|----------------|----------------|----------------|-----------------|-------------------|-------------------------------|---------------------|-------------------------------|
| | | | | | | | | | Diám en tubería mm / in | Diám máx mm / in | Diám sierra de calamm / in |
| 72C/200200 | 50 2 | 2 | 60.3 2.375 | 76.2 3.000 | 15.88 0.625 | 7.92 0.312 | 57.15 2.25 | 0.45 1.00 | 60.3 2.375 | 52.5 2.067 | 50.0 2.000 |
| 72C/200250 | | 2 1/2 | | | | | | | | | |
| 72C/200300 | | 3 | | | | | | | | | |
| 72C/200400 | | 4 | | | | | | | | | |
| 72C/200500 | | 5 | | | | | | | | | |
| 72C/200600800 | 6 - 8 | | | | | | | | | | |
| 72C/250250 | 65 2 1/2 | 2 1/2 | 73.0 2.875 | 76.2 3.000 | 15.88 0.625 | 7.92 0.312 | 69.09 2.722 | 0.73 1.60 | 73.0 2.875 | 62.0 2.443 | 60.0 2 3/8 |
| 72C/250300 | | 3 | | | | | | | | | |
| 72C/250400 | | 4 | | | | | | | | | |
| 72C/250500 | | 5 | | | | | | | | | |
| 72C/250600800 | | 6 - 8 | | | | | | | | | |
| 72C/300300 | 80 3 | 3 | 88.9 3.500 | 76.2 3.000 | 15.88 0.625 | 7.92 0.312 | 84.94 3.346 | 0.91 2.00 | 88.9 3.500 | 77.9 3.068 | 75.0 3.000 |
| 72C/300400 | | 4 | | | | | | | | | |
| 72C/300500 | | 5 | | | | | | | | | |
| 72C/300600800 | | 6 - 8 | | | | | | | | | |
| 72C/400400 | 100 4 | 4 | 114.3 4.500 | 101.6 4.000 | 15.88 0.625 | 9.53 0.375 | 110.08 4.337 | 1.73 3.80 | 114.3 4.500 | 102.3 4.026 | 100.0 3 15/16 |
| 72C/400500 | | 5 | | | | | | | | | |
| 72C/400600800 | | 6 - 8 | | | | | | | | | |
| 72C/600600 | 150 6 | 6 | 168.3 6.625 | 101.6 4.000 | 15.88 0.625 | 9.53 0.375 | 163.96 6.460 | 3.18 7.00 | 168.3 6.625 | -- | -- |
| 72C/600800 | | 8 | | | | | | | | | |
| 72C/800800 | 200 8 | 8 | 219.1 8.625 | 101.6 4.000 | 19.05 0.750 | 11.13 0.438 | 214.40 8.440 | 4.32 9.50 | 219.1 8.625 | -- | -- |
| 72C/8001000 | | 10 | | | | | | | | | |



Manguitos de soldar ranurados por fresado o laminado - 72C

Datos físicos

| Referencia | Diám salida mm / in | Tubería in | A mm / in | B mm / in | L mm / in | W mm / in | G mm / in | Peso Kgs / Lbs | Diám recomendado del orificio | | |
|---------------|--------------------------|---------------|----------------|----------------|----------------|---------------|-----------------|-------------------|-------------------------------|---------------------|------------------------------------|
| | | | | | | | | | Diám en tubería mm / in | Diám máx mm / in | Diám sierra de calar mm / in |
| 72R/125125150 | 32 1 1/4 | 1 1/4 - 1 1/2 | 42.2 1.660 | 63.5 2.500 | 15.88 0.625 | 7.14 0.281 | 38.99 1.535 | 0.21 1.46 | 42.2 1.660 | 36.6 1.442 | 35.0 1 3/8 |
| 72R/125200 | | 2 | | | | | | | | | |
| 72R/125250 | | 2 1/2 | | | | | | | | | |
| 72R/125300 | | 3 | | | | | | | | | |
| 72R/125400 | | 4 | | | | | | | | | |
| 72R/125500 | | 5 | | | | | | | | | |
| 72R/125600800 | 6 - 8 | | | | | | | | | | |
| 72R/150150 | 40 1 1/2 | 1.5 | 48.3 1.900 | 63.5 2.500 | 15.88 0.625 | 7.14 0.281 | 45.09 1.775 | 0.24 0.53 | 48.3 1.900 | 42.7 1.682 | 40.0 1 9/16 |
| 72R/150200 | | 2 | | | | | | | | | |
| 72R/150250 | | 2 1/2 | | | | | | | | | |
| 72R/150300 | | 3 | | | | | | | | | |
| 72R/150400 | | 4 | | | | | | | | | |
| 72R/150500 | | 5 | | | | | | | | | |
| 72R/150600800 | 6 - 8 | | | | | | | | | | |
| 72R/200200 | 50 2 | 2 | 60.3 2.375 | 76.2 3.000 | 15.88 0.625 | 8.74 0.344 | 57.15 2.250 | 0.41 0.90 | 60.3 2.375 | 54.8 2.157 | 52.0 2 1/8 |
| 72R/200250 | | 2 1/2 | | | | | | | | | |
| 72R/200300 | | 3 | | | | | | | | | |
| 72R/200400 | | 4 | | | | | | | | | |
| 72R/200500 | | 5 | | | | | | | | | |
| 72R/200600800 | | 6 - 8 | | | | | | | | | |
| 72R/250250 | 65 2 1/2 (76.0 OD) | 2 1/2 | 76.1 3.000 | 76.2 3.000 | 15.88 0.625 | 8.74 0.344 | 72.26 2.845 | 0.64 1.41 | 76.1 3.000 | 70.0 2.750 | 68.0 2 11/16 |
| 72R/250300 | | 3 | | | | | | | | | |
| 72R/250400 | | 4 | | | | | | | | | |
| 72R/250500 | | 5 | | | | | | | | | |
| 72R/250600800 | | 6 - 8 | | | | | | | | | |
| 72R/300300 | 80 3 | 3 | 88.9 3.500 | 76.2 3.000 | 15.88 0.625 | 8.74 0.344 | 84.94 3.440 | 0.77 1.69 | 88.9 3.500 | 82.8 3.260 | 80.0 3 3/16 |
| 72R/300400 | | 4 | | | | | | | | | |
| 72R/300500 | | 5 | | | | | | | | | |
| 72R/300600800 | | 6 - 8 | | | | | | | | | |
| 72R/400400 | 100 4 | 4 | 114.3 4.500 | 101.6 4.000 | 15.88 0.625 | 8.74 0.344 | 110.08 4.314 | 1.45 3.19 | 114.3 4.500 | 108.2 4.260 | 105.0 4 3/16 |
| 72R/400500 | | 5 | | | | | | | | | |
| 72R/400600800 | | 6 - 8 | | | | | | | | | |