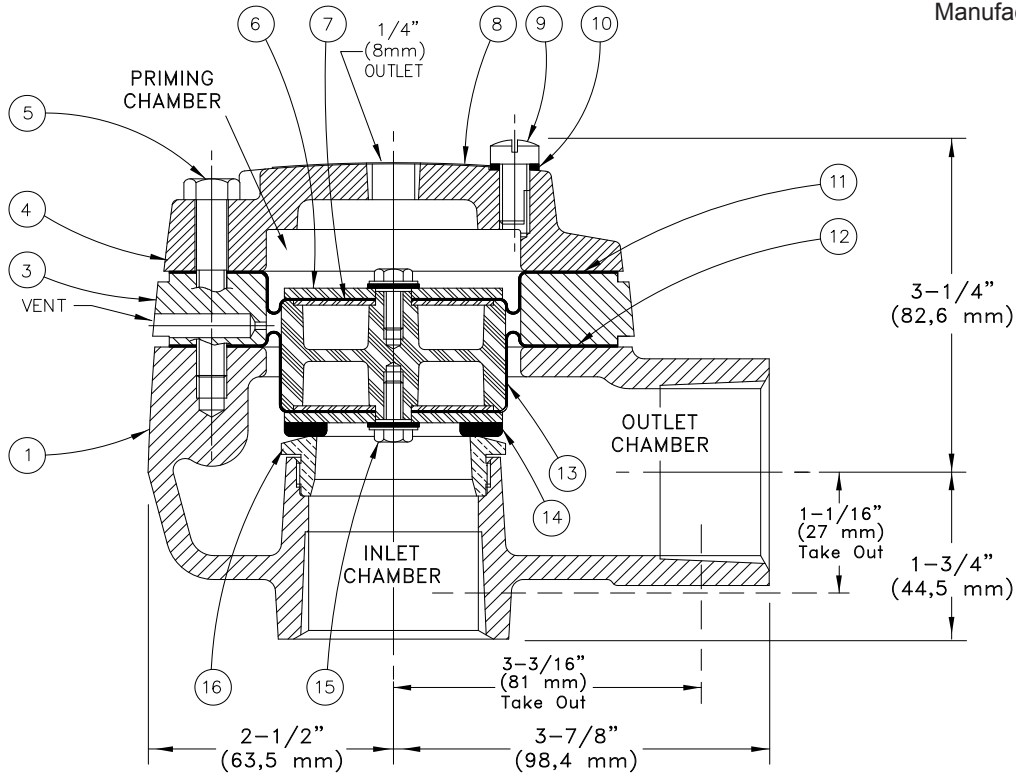




REPLACEMENT PARTS

**DELUGE VALVE HALAR®
COATED MODEL E-4
1-1/2" (DN40)**

Manufactured 1994 -



| ITEM NO. | PART NUMBER | DESCRIPTION | MATERIAL | NO. REQ'D |
|----------|-------------|-----------------------------------|--|-----------|
| 1 | -- | Body | Ductile Iron 65-45-12, Halar® Coated | 1 |
| 2 | 08318 | Lithium Grease | Lithium Grease | - |
| 3 | -- | Spacer | Ductile Iron 65-45-12, Halar® Coated | 1 |
| 4 | -- | Cover | Ductile Iron 60-40-18, Halar® Coated | 1 |
| 5 | 04838A | HHC Screw 5/16-18 X 2" lg. | Steel | 4 |
| 6 | 04211A | Clamp Plate | Stainless Steel UNS-S30400, 12 gauge | 1 |
| 7 | 04692A | End Plate | Stainless Steel UNS-S30400, 18 gauge | 2 |
| 8 | -- | Cover Label | Aluminum | 1 |
| 9 | 08142 | Vent Screw | # 400 Monel | 1 |
| 10 | 03915A | Vent Screw Washer | Polypropylene | 1 |
| 11 | 04212B | Upper Diaphragm | Polyester Fabric and EPDM Elastomer | 1 |
| 12 | 09865 | Lower Diaphragm | Polyester Fabric and EPDM Elastomer | 1 |
| 13 | 04547B | Piston | Polycarbonate RTP 301 | 1 |
| 14 | 04928A | Clapper Assembly | Stainless Steel UNS-S30400, 12 g. & EPDM | 1 |
| 15 | 06595A | Screw and Sealing Washer Assembly | Stainless Steel UNS-S30400/Neoprene | 2 |
| 16 | -- | Seat | Brass UNS-C84400, Electroless Nickel, Tin Plated | 1 |

-- Indicates replacement part not available

SUB-ASSEMBLY LIST

| | | |
|------------|-------|----------------------|
| 5-7, 11-15 | 13486 | Clapper Assembly Kit |
|------------|-------|----------------------|

Note: Do not damage coating, or complete valve replacement will be required.