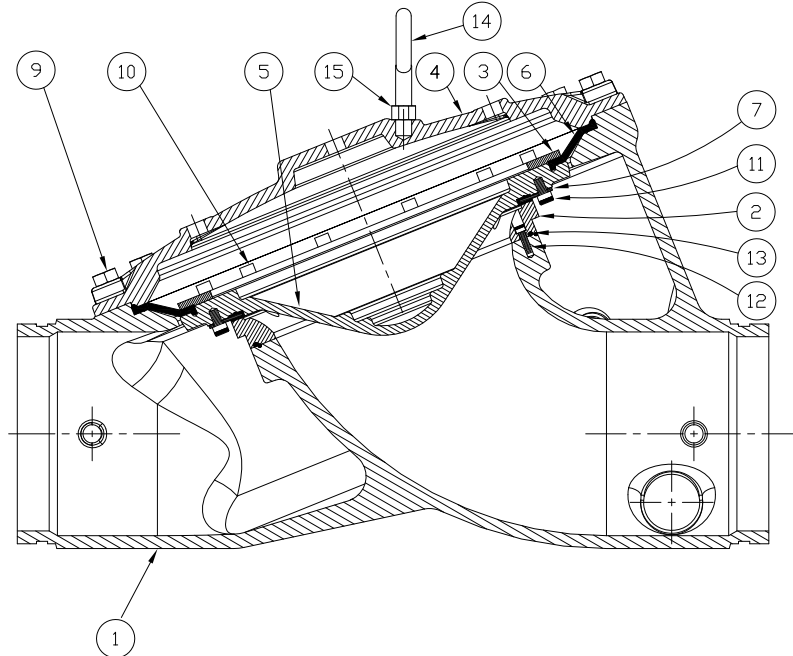




REPLACEMENT PARTS

DELUGE VALVE MODEL F-1
2-1/2" (DN65), 3" (DN80), 4" (DN100), 6" (DN150) & 8" (DN200)



Manufactured
 2-1/2" 2005 -
 3", 4" & 6" 2002 -
 8" 2000 -

Valve Take-out
 2-1/2" - 15-1/8" (384.1 mm)
 3" - 15-1/8" (384.1 mm)
 4" - 19-1/2" (495.3 mm)
 6" - 24-3/8" (619.1 mm)
 8" - 29-1/2" (749.3 mm)

ITEM NO.	PART NUMBER				DESCRIPTION	MATERIAL	NO. REQ'D.			
	2-1/2" (DN65) & 3" (DN80)	4" (DN100)	6" (DN150)	8" (DN200)			2-1/2" (DN65) & 3" (DN80)	4" (DN100)	6" (DN150)	8" (DN200)
1	--	--	--	--	Body	Ductile Iron	1	1	1	1
2	*	*	*	*	Seat	Brass	1	1	1	1
3	02493B	02378B	05704B	10514	Ring Clamp, Upper Diaphragm	Brass Casting	1	1	1	1
4	--	--	--	--	Cover	Ductile Iron 65-45-12	1	1	1	1
5	08846N	08844N	08570N	10518N/B	Clapper	Ductile Iron 65-45-12, Teflon® Powder Coated	1	1	1	1
6	12012	11560	11561	10510	Upper Diaphragm	EPDM - ASTM D-2000	1	1	1	1
7	02497B	02382B	02176B	10512	Rubber Seat Assembly	EPDM - ASTM D-2000	1	1	1	1
8	--	--	--	--	Data Plate	Aluminum Etched	1	1	1	1
9	02169A				Screw, H.H.C. ¹ , 1/2-13 x 1-1/4 (32)	Steel, SAE-Grade 5, ASTM A449	10			
		02200A			Screw, H.H.C. ¹ , 1/2-13 x 1-1/2 (38)	Steel, SAE-Grade 5, ASTM A307-90		12		
10			05707A	05707A	Screw, H.H.C. ¹ , 5/8-11 x 1-3/4 (44)	Steel, SAE Grade 5, ASTM A307-90			15	16
	02496A				Screw, R.H. ³ , 10-24 x 3/8 (9.5)	Stainless Steel UNS-S30200	6			
		02383A			Screw, H.H.C. ¹ , 5/16-18 x 1/2 (13)	Stainless Steel UNS-S30400		8		
			07932		Screw, H.H.C. ¹ , 3/8-16 x 1/2 (13)	Stainless Steel UNS-S30400			12	
11				11022	Screw, S.H.C. ² , 3/8-16 x 3/4 (19.1)	Stainless Steel UNS-S31600				12
	02494A				Screw, R.H. ³ , 10-24 x 1/2 (12.7)	Stainless Steel UNS-S30200	6			
		02383A			Screw, H.H.C. ¹ , 5/16-18 x 1/2 (13)	Stainless Steel UNS-S30400		6		
			02454A		Screw, H.H.C. ¹ , 3/8-16 x 5/8 (16)	Stainless Steel UNS-S30400			12	
12				11021	Screw, S.H.C. ² , 1/4-20 x 1/2 (12.7)	Stainless Steel UNS-S30400				12
	*				Screw, R.H. ³ , 10-24 x 5/8 (16)	Stainless Steel UNS-S30200	4			
		*			Screw, H.H.C. ¹ , 5/16-18 x 1/2 (13)	Stainless Steel UNS-S30400		8		
13		*	*	*	Screw, S.H.C. ² , 1/4-20 x 3/4 (19.1)	Stainless Steel UNS-S31600			8	6
	*	*	*	*	O-Ring	EPDM	1	1	1	1
14	--	--	--	11570	Eye Bolt, 5/8-11-UNC	Carbon Steel				1
15				F01256	Nut, 5/8-11-UNC	Stainless Steel				1

-- Indicates replacement part not available

* Indicates part available only in sub-assembly listed below

SUB-ASSEMBLY					
2, 12, 13	14711-3	14711-4	14711-6	14711-8	Seat Replacement Kit*
3, 5-7, 9-11	13488	13490	13492	13484	Clapper Assembly Kit

*Note: Includes o-ring lubricant to be added to ring groove in seat.

¹ Hex Head Cap Screw

² Socket Head Cap Screw, (8" Valve - #10 & 11 must be S.H.C. for clearance with seat)

³ Round Head, Phillips Drive Screw