



# TECHNICAL DATA

## REPLACEMENT FURNAS SWITCH ASSEMBLY FOR MODEL E-1 COMPRESSOR

The Viking Corporation, 210 N Industrial Park Drive, Hastings MI 49058

Telephone: 269-945-9501 Technical Services 877-384-5464 Fax: 269-945-4495 Email: techsvcs@vikingcorp.com

### REMOVAL AND INSTALLATION INSTRUCTIONS

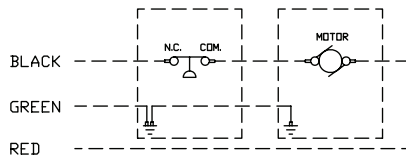
1. Disconnect black wire and both green wires from motor housing and pull through to junction box. Be certain to remove only the black and green wires that lead to the junction box. Mark the location of the wires as you will be attaching new ones later.
2. Break union and remove and discard the 1/4" x 4" nipple, 1/4" union, 1/4" x 3-1/2" nipple, Square D switch 08922 including both green wires and both black wires, and 1/2" x close nipple.
3. Remove and reposition the 1/4" tee as shown in Figure 2, page 130 b, with the 1/4" x 2-1/2" nipple.
4. Rotate the junction box as shown in Figure 2, page 130 b.
5. Attach the Furnas Switch Assembly, Part No. 12937, as shown in Figure 2.
6. Remove the male portion of straight conduit union and attach to the junction box. Pull the 4 wires from the switch assembly through the junction box. Pull black wire with straight end and green wire with fork end to motor from junction box and attach as shown in Figure 2, page 130 b (same position as removed in step 1). Connect remaining black and green wires to electrical supply. Fasten conduit to junction box by reconnecting the straight conduit union.
7. Test the system. See page 131c-d, Installation Nos. 4, 5 & 6.

**Note:** Some adjustment may be necessary on the conduit and the air line.

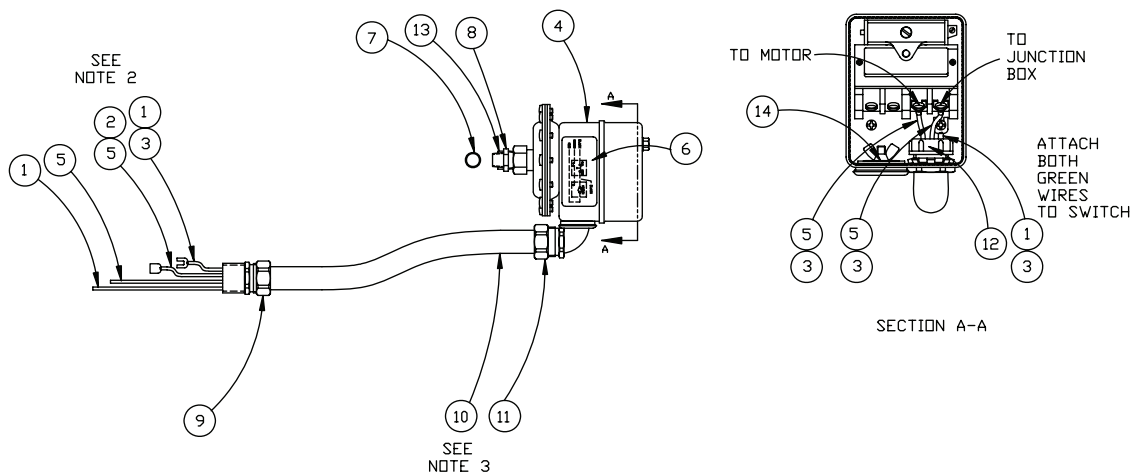
AIR MAINTENANCE COMPRESSOR REPLACEMENT KIT FOR MODEL E-1, FURNAS SWITCH	
ITEM NO.	DESCRIPTION
1	Wire, #14 Green (See Note 1)
2	Terminal, Straight
3	Terminal, Fork
4	Pressure Switch
5	Wire, #14 Black (See Note 2)
6	Label, Schematic
7	Nipple, 1/4 x 2 1/2", Galv.
8	Bushing, 1/4 x 3/8, Galv.
9	Connector, Nonmetallic Conduit
10	Conduit, 1/2", Nonmetallic (See Note 3)
11	Connector, Nonmetallic Conduit
12	Bushing, Insulated
13	Nipple, 1/4 x Close, Galv.
14	Plug

**Notes:**

1. Cut all wires 25" long.
2. Attach fork to either of the green wires. Attach female quick disconnect to black wire that is connected to the terminal of the switch marked "motor".
3. Conduit is to be 11 1/2" long.



FOR PROPER INTERNAL MOTOR CONNECTIONS  
CONSULT INSTRUCTIONS ON MOTOR



**FURNAS SWITCH ASSEMBLY, PART NO. 12937**

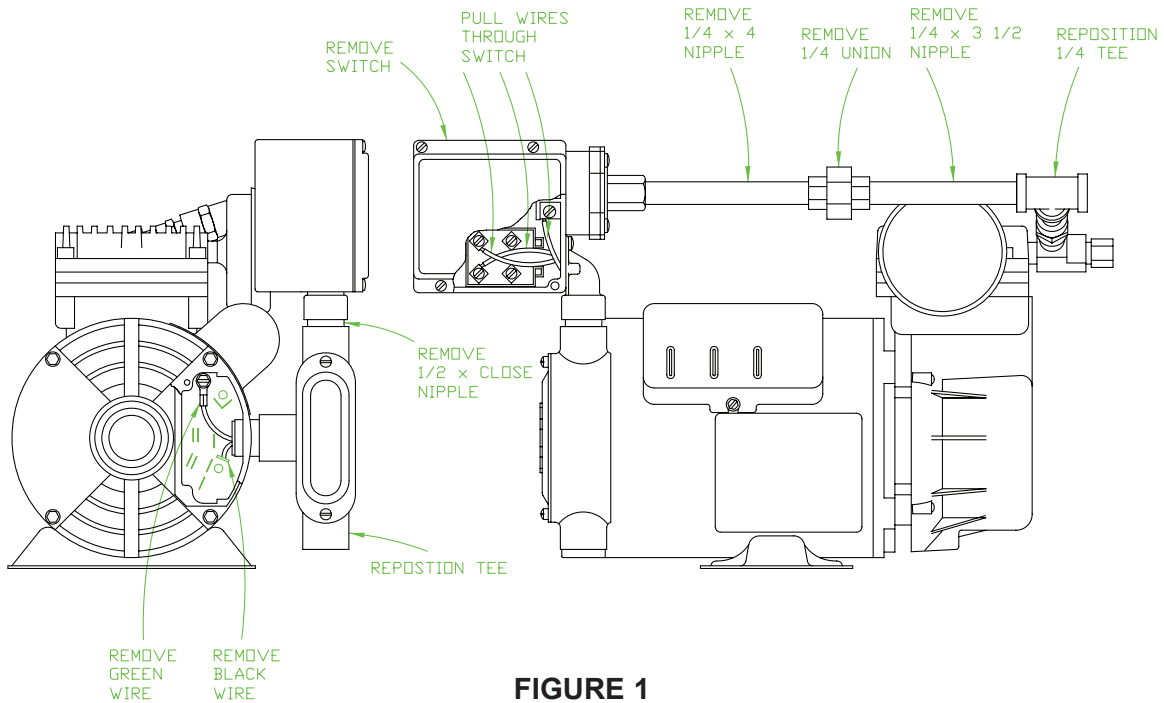


# TECHNICAL DATA

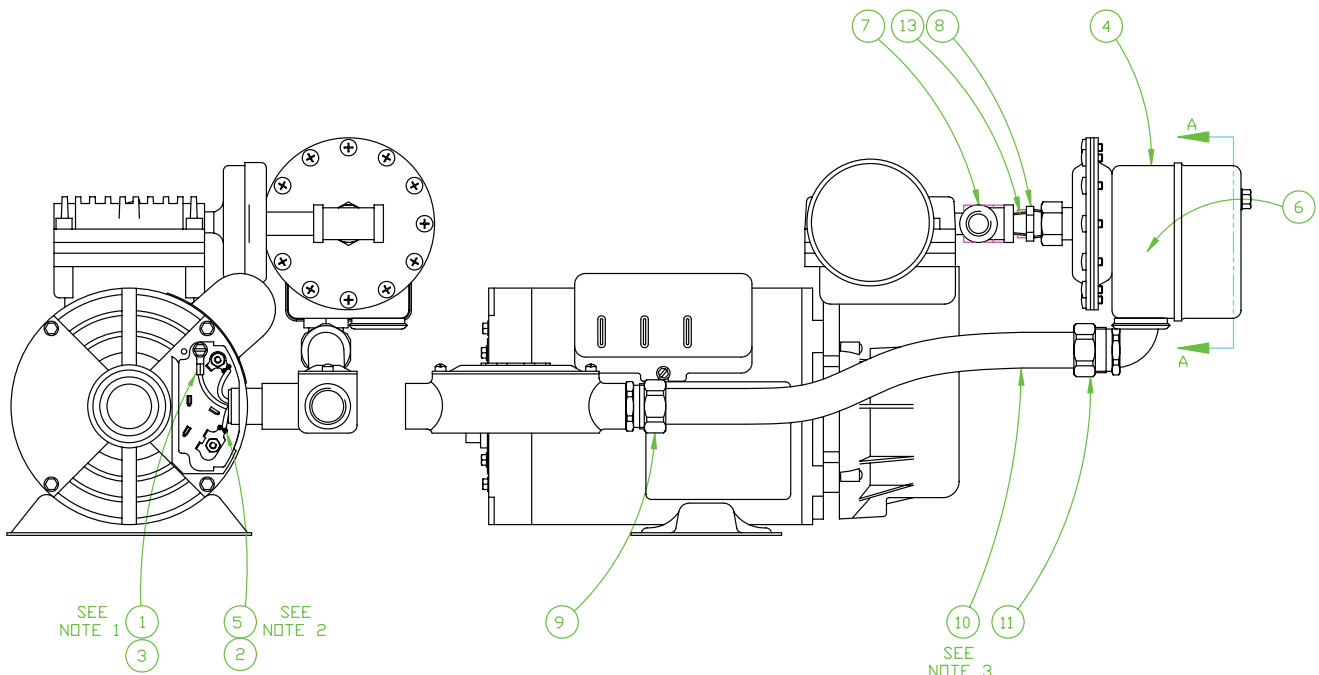
## REPLACEMENT FURNAS SWITCH ASSEMBLY FOR MODEL E-1 COMPRESSOR

The Viking Corporation, 210 N Industrial Park Drive, Hastings MI 49058

Telephone: 269-945-9501 Technical Services 877-384-5464 Fax: 269-945-4495 Email: techsvcs@vikingcorp.com



**FIGURE 1  
OLD CONFIGURATION WITH SQUARE D SWITCH**



**FIGURE 2  
NEW CONFIGURATION WITH FURNAS SWITCH**