



Section C - Sprinklers
Extended Coverage

TABLE OF CONTENTS

Pendent/Upright	VK600/VK602, 5.6 (81) / 8.0 (115) K factor, pendent.....C-1 VK610, 5.6 (81) K factor, pendent / high pressure pendent C-1
ELO	VK532/VK534, 11.2 (161) K factor, ELO, upright / pendent.....C-2 VK608, 11.2 (161) K factor, ELO, pendentC-2 VK570/VK572, 14.0 (202) K factor, ELO, upright / pendent.....C-3 VK595, 25.2 (363) K factor, EC upright.....C-3
Sidewall	VK605/VK606, 5.6 (81) / 8.0 (115) K factor, horizontal sidewallC-4 VK612, 5.6 (81) K factor, horizontal sidewall, high pressure.....C-4 VK630, 8.0 (115) K factor, horizontal sidewall / domed concealed sidewallC-5 VK638, 8.0 (115) K factor, "Corridor Sprinkler", horizontal sidewall.....C-5
Concealed	Mirage® VK632 / VK634, 5.6 (81) / 8.0 (115) K factor, flat concealed pendent.....C-6 Mirage® ELO VK636, 11.2 (161) K factor, flat concealed pendent (Light Hazard).....C-6 Mirage® ELO VK538, 11.2 (161) K factor, flat concealed pendent (Ordinary Hazard)....C-6 VK680, 8.0 (115) K factor, flat concealed horizontal sidewall.....C-6 Mirage® Cover Plates (standard, large, square, ELO).....C-7
Fusible Link	Fusible Link, upright / pendentC-8 Fusible Link, horizontal sidewall, high pressure.....C-9

Notes

1. Unless otherwise indicated, all cover plates and escutcheons are sold separately.
2. Cover plates, escutcheons, and sprinklers are available in custom colors at an additional charge. See page F-8 for details.
3. Refer to Viking technical data pages for complete product specifications. You may print or download technical data by visiting www.vikinggroupinc.com.
4. List prices effective January 12, 2019. Supersedes June 2018 list price book.
5. All sales by Viking are subject to the Terms & Conditions found on the last page of this book.

Microfast® is a registered trademark of The Viking Corporation
Microtech® is a registered trademark of The Viking Corporation
Mirage® is a registered trademark of The Viking Corporation



Microfast® Model M
Quick/Standard Response
Extended Coverage
Glass Bulb
Pendant

SIN: VK600
K Factor: 5.6 (81)
Thread Size: 1/2 inch NPT
Base Part #: 06778B



Microfast® Model M
Standard/Quick Response
Extended Coverage
Glass Bulb
Pendant

SIN: VK602
K Factor: 8.0 (115)
Thread Size: 3/4 inch NPT
Base Part #: 18262

Finish	Temp	Part #	IPG	List Price
Standard Brass	135°F	06778BAA	V144	\$62.34
Standard Brass	155°F	06778BAB	V144	\$62.34
Standard Brass	175°F	06778BAD	V144	\$62.34
Chrome	135°F	06778BFA	V144	\$62.34
Chrome	155°F	06778BFB	V144	\$62.34
Chrome	175°F	06778BFD	V144	\$62.34
White-Polyester ¹	135°F	06778BMA/W	V135	\$65.46
White-Polyester	155°F	06778BMB/W	V135	\$65.46
White-Polyester	175°F	06778BMD/W	V135	\$65.46
Std Sprinkler Wrench		21475M/B	V207	\$75.37
Wrench for Recessed		13577W/B	V207	\$145.25

Finish	Temp	Part #	IPG	List Price
Standard Brass	135°F	18262AA	V135	\$69.06
Standard Brass	155°F	18262AB	V135	\$69.06
Standard Brass	175°F	18262AD	V135	\$69.06
Chrome	135°F	18262FA	V135	\$74.57
Chrome	155°F	18262FB	V135	\$74.57
Chrome	175°F	18262FD	V135	\$74.57
White-Polyester ²	135°F	18262MA/W	V135	\$74.57
White-Polyester	155°F	18262MB/W	V135	\$74.57
White-Polyester	175°F	18262MD/W	V135	\$74.57
Std Sprinkler Wrench		21475M/B	V207	\$75.37
Wrench for Recessed		13577W/B	V207	\$145.25



HIGH PRESSURE - Model M
Standard/Quick Response
Extended Coverage
Glass Bulb
Pendant

SIN: VK610
K Factor: 5.6 (81)
Thread Size: 1/2 inch NPT
Base Part #: 12294

Finish	Temp	Part #	IPG	List Price
Standard Brass	135°F	12294AA	V135	\$68.36
Standard Brass	155°F	12294AB	V135	\$68.36
Standard Brass	175°F	12294AD	V135	\$68.36
Chrome	135°F	12294FA	V135	\$72.97
Chrome	155°F	12294FB	V135	\$72.97
Chrome	175°F	12294FD	V135	\$72.97
White-Polyester ¹	135°F	12294MA/W	V135	\$72.97
White-Polyester	155°F	12294MB/W	V135	\$72.97
White-Polyester	175°F	12294MD/W	V135	\$72.97
Std Sprinkler Wrench		21475M/B	V207	\$75.37
Wrench for Recessed		13577W/B	V207	\$145.25

NOTE - High Pressure (HP) = Working pressure to 250 psi (1724 kPa)

Select Escutcheons - 1/2 inch *			
E1 push-on (chrome, 1/2 in)	06419AF	V200	\$8.04
E1 push-on (white, 1/2 in)	06419AM/W	V200	\$8.04
E2 threaded (chrome, 1/2 in)	11038F	V200	\$8.07

*Refer to Page H-1 for complete list of available escutcheons

Select Escutcheons - 3/4 inch *			
E1 push-on (chrome, 3/4 in)	20369F	V200	\$8.07
E1 push-on (white, 3/4 in)	20369M/W	V200	\$8.07
E2 threaded (chrome, 3/4 in)	11625F	V200	\$8.07

*Refer to Page H-1 for complete list of available escutcheons

(1) Polyester sprinklers are suitable for decorative applications; UL listed for corrosion resistance.

Microfast® Model M
EXTRA LARGE ORIFICE
Standard/Quick Response
Extended Coverage
Glass Bulb
Upright



SIN: VK532^{1,2}
K Factor: 11.2 (161)
Thread Size: 3/4 inch NPT
Base Part #: 08687

Microfast® Model M
EXTRA LARGE ORIFICE
Standard/Quick Response
Extended Coverage
Glass Bulb
Pendent



SIN: VK534^{1,2}
K Factor: 11.2 (161)
Thread Size: 3/4 inch
Base Part #: 08340

Finish	Temp	Part #	IPG	List Price
Standard Brass	155°F	08687AB	V139	\$98.93
Standard Brass	175°F	08687AD	V139	\$98.93
Standard Brass	200°F	08687AE	V139	\$98.93
Standard Brass	286°F	08687AG	V139	\$98.93
Chrome	155°F	08687FB	V139	\$113.36
Chrome	175°F	08687FD	V139	\$113.36
Chrome	200°F	08687FE	V139	\$113.36
Chrome	286°F	08687FG	V139	\$113.36
White-Polyester ³	155°F	08687MB/W	V139	\$113.36
White-Polyester	175°F	08687MD/W	V139	\$113.36
White-Polyester	200°F	08687ME/W	V139	\$113.36
White-Polyester	286°F	08687MG/W	V139	\$113.36
Black-Polyester ³	155°F	08687MB/B	V139	\$154.21
Black-Polyester	175°F	08687MD/B	V139	\$154.21
Black-Polyester	200°F	08687ME/B	V139	\$154.21
Black-Polyester	286°F	08687MG/B	V139	\$154.21
Nickel PTFE (ENT) ⁴	155°F	08687JNB	V188.A	\$136.71
Nickel PTFE (ENT)	175°F	08687JND	V188.A	\$136.71
Nickel PTFE (ENT)	200°F	08687JNE	V188.A	\$136.71
Nickel PTFE (ENT)	286°F	08687JNG	V188.A	\$136.71
Std Sprinkler Wrench		05118CW/B	V207	\$145.25

Finish	Temp	Part #	IPG	List Price
Standard Brass	155°F	08340AB	V139	\$98.92
Standard Brass	175°F	08340AD	V139	\$98.92
Standard Brass	200°F	08340AE	V139	\$98.92
Standard Brass	286°F	08340AG	V139	\$98.92
Chrome	155°F	08340FB	V139	\$101.84
Chrome	175°F	08340FD	V139	\$101.84
Chrome	200°F	08340FE	V139	\$101.84
Chrome	286°F	08340FG	V139	\$101.84
White-Polyester ³	155°F	08340MB/W	V139	\$101.84
White-Polyester	175°F	08340MD/W	V139	\$101.84
White-Polyester	200°F	08340ME/W	V139	\$101.84
White-Polyester	286°F	08340MG/W	V139	\$101.84
Black-Polyester ³	155°F	08340MB/B	V139	\$154.21
Black-Polyester	175°F	08340MD/B	V139	\$154.21
Black-Polyester	200°F	08340ME/B	V139	\$154.21
Black-Polyester	286°F	08340MG/B	V139	\$154.21
Nickel PTFE (ENT) ⁴	155°F	08340JNB	V188.A	\$136.71
Nickel PTFE (ENT)	175°F	08340JND	V188.A	\$136.71
Nickel PTFE (ENT)	200°F	08340JNE	V188.A	\$136.71
Nickel PTFE (ENT)	286°F	08340JNG	V188.A	\$136.71
Std Wrench for ELO Spk		05118CW/B	V207	\$145.25
Wrench for Recessed		11663W/B	V207	\$145.25

Model M
EXTRA LARGE ORIFICE
Standard/Quick Response
Extended Coverage
Glass Bulb
Pendent



SIN: VK608¹
K Factor: 11.2 (161)
Thread Size: 3/4 inch NPT
Base Part #: 08339

Finish	Temp	Part #	IPG	List Price
Standard Brass	135°F	08339AA	V138	\$100.44
Standard Brass	155°F	08339AB	V138	\$100.44
Standard Brass	175°F	08339AD	V138	\$100.44
Chrome	135°F	08339FA	V138	\$107.30
Chrome	155°F	08339FB	V138	\$107.30
Chrome	175°F	08339FD	V138	\$107.30
White-Polyester ³	135°F	08339MA/W	V138	\$107.30
White-Polyester	155°F	08339MB/W	V138	\$107.30
White-Polyester	175°F	08339MD/W	V138	\$107.30
Black-Polyester ³	135°F	08339MA/B	V138	\$138.74
Black-Polyester	155°F	08339MB/B	V138	\$138.74
Black-Polyester	175°F	08339MD/B	V138	\$138.74
Nickel PTFE (ENT) ⁴	135°F	08339JNA	V188.A	\$172.06
Nickel PTFE (ENT)	155°F	08339JNB	V188.A	\$172.06
Nickel PTFE (ENT)	175°F	08339JND	V188.A	\$172.06
Std Sprinkler Wrench		05118CW/B	V207	\$145.25
Wrench for Recessed		11663W/B	V207	\$145.25

- (1) Light Hazard
- (2) Ordinary Hazard
- (3) Suitable for decorative applications and are UL listed for corrosion resistance.
- (4) Electroless Nickel PTFE (ENT) coating is UL Listed and FM Approved for corrosion resistance.



**Model M
Standard/Quick Response
Extended Coverage
Glass Bulb
Upright**

SIN: VK570^{1,3}
K Factor: 14.0 (202)
Thread Size: 3/4 inch NPT
Base Part #: 13840



**Model M
Standard/Quick Response
Extended Coverage
Glass Bulb
Pendent**

SIN: VK572^{1,3}
K Factor: 14.0 (202)
Thread Size: 3/4 inch NPT
Base Part #: 13722

Finish	Temp	Part #	IPG	List Price
Standard Brass	155°F	13840AB	V140	\$118.89
Standard Brass	175°F	13840AD	V140	\$118.89
Standard Brass	200°F	13840AE	V140	\$118.89
Standard Brass	286°F	13840AG	V140	\$118.89
Chrome	155°F	13840FB	V140	\$129.70
Chrome	175°F	13840FD	V140	\$129.70
Chrome	200°F	13840FE	V140	\$129.70
Chrome	286°F	13840FG	V140	\$129.70
White-Polyester ²	155°F	13840MB/W	V140	\$129.70
White-Polyester	175°F	13840MD/W	V140	\$129.70
White-Polyester	200°F	13840ME/W	V140	\$129.70
White-Polyester	286°F	13840MG/W	V140	\$129.70
Black-Polyester ²	155°F	13840MB/B	V140	\$181.20
Black-Polyester	175°F	13840MD/B	V140	\$181.20
Black-Polyester	200°F	13840ME/B	V140	\$181.20
Black-Polyester	286°F	13840MG/B	V140	\$181.20
Nickel PTFE (ENT) ⁴	155°F	13840JNB	V188.A	\$170.88
Nickel PTFE (ENT)	175°F	13840JND	V188.A	\$170.88
Nickel PTFE (ENT)	200°F	13840JNE	V188.A	\$170.88
Nickel PTFE (ENT)	286°F	13840JNG	V188.A	\$170.88
Wrench for ECOH 14K		07297W/B	V207	\$113.16
Wrench for Recsd ECOH		13032W/B	V207	\$145.25

Finish	Temp	Part #	IPG	List Price
Standard Brass	155°F	13722AB	V140	\$118.89
Standard Brass	175°F	13722AD	V140	\$118.89
Standard Brass	200°F	13722AE	V140	\$118.89
Standard Brass	286°F	13722AG	V140	\$118.89
Chrome	155°F	13722FB	V140	\$129.70
Chrome	175°F	13722FD	V140	\$129.70
Chrome	200°F	13722FE	V140	\$129.70
Chrome	286°F	13722FG	V140	\$129.70
White-Polyester ²	155°F	13722MB/W	V140	\$129.70
White-Polyester	175°F	13722MD/W	V140	\$129.70
White-Polyester	200°F	13722ME/W	V140	\$129.70
White-Polyester	286°F	13722MG/W	V140	\$129.70
Black-Polyester ²	155°F	13722MB/B	V140	\$181.20
Black-Polyester	175°F	13722MD/B	V140	\$181.20
Black-Polyester	200°F	13722ME/B	V140	\$181.20
Black-Polyester	286°F	13722MG/B	V140	\$181.20
Nickel PTFE (ENT) ⁴	155°F	13722JNB	V188.A	\$170.88
Nickel PTFE (ENT)	175°F	13722JND	V188.A	\$170.88
Nickel PTFE (ENT)	200°F	13722JNE	V188.A	\$170.88
Nickel PTFE (ENT)	286°F	13722JNG	V188.A	\$170.88
Wrench for ECOH 14K		07297W/B	V207	\$113.16
Wrench for Recsd ECOH		13032W/B	V207	\$145.25



**Standard/Quick Response
Extended Coverage
Fusible Link
Upright**

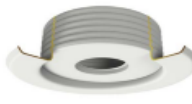
SIN: VK595
K Factor: 25.2 (363)
Thread Size: 1 inch NPT
Base Part #: 16859A

Finish	Temp	Part #	IPG	List Price
Standard Brass	165°F	16859AC	V158	\$189.07
Standard Brass	212°F	16859AE	V158	\$189.07
Spk Wrench		16888M/B	V207	\$166.52



**Recessed Escutcheon
Model E-1 (push-on)**
(includes cup & adapter)
(OD = 3-1/16" / 78 mm)

Finish	Size	Part #	IPG	List Price
Bright Brass	3/4"	20369B	V201	\$38.09
Polished Chrome	3/4"	20369F	V200	\$8.07
White	3/4"	20369M/W	V200	\$8.07
Black	3/4"	20369M/B	V201	\$16.65



**Threaded Escutcheon
Model E-2 (thread-on)**
(includes cup & adapter)
(OD = 3-1/8" / 80 mm)

Polished Chrome	3/4"	11625F	V200	\$8.07
White	3/4"	11625M/W	V200	\$8.07

*Refer to Page H-1 for complete list of available escutcheons

- (1) Ordinary Hazard
- (2) Suitable for decorative applications and are UL listed for corrosion resistance.
- (3) Also listed as quick response for ordinary hazard (refer to technical data page for complete listing/approval data)
- (4) Electroless Nickel PTFE (ENT) plating is UL Listed and FM Approved for corrosion resistance.

Microfast® Model M
Standard/Quick Response
Extended Coverage
Glass Bulb
Horizontal Sidewall



SIN: VK605
K Factor: 5.6 (81)
Thread Size: 1/2 inch NPT
Base Part #: 12120

Microfast® Model M
Quick Response
Extended Coverage
Glass Bulb
Horizontal Sidewall



SIN: VK606
K Factor: 8.0 (115)
Thread Size: 3/4 inch NPT
Base Part #: 18271

Finish	Temp	Part #	IPG	List Price
Standard Brass	135°F	12120AA	V136	\$63.72
Standard Brass	155°F	12120AB	V136	\$63.72
Standard Brass	175°F	12120AD	V136	\$63.72
Chrome	135°F	12120FA	V136	\$70.92
Chrome	155°F	12120FB	V136	\$70.92
Chrome	175°F	12120FD	V136	\$70.92
White-Polyester ¹	135°F	12120MA/W	V136	\$70.92
White-Polyester	155°F	12120MB/W	V136	\$70.92
White-Polyester	175°F	12120MD/W	V136	\$70.92
Std Sprinkler Wrench		21475M/B	V207	\$75.37
Wrench for Recessed		13655W/B	V207	\$145.25

Finish	Temp	Part #	IPG	List Price
Standard Brass	135°F	18271AA	V141	\$73.87
Standard Brass	155°F	18271AB	V141	\$73.87
Standard Brass	175°F	18271AD	V141	\$73.87
Chrome	135°F	18271FA	V141	\$79.13
Chrome	155°F	18271FB	V141	\$79.13
Chrome	175°F	18271FD	V141	\$79.13
White-Polyester ¹	135°F	18271MA/W	V141	\$79.13
White-Polyester	155°F	18271MB/W	V141	\$79.13
White-Polyester	175°F	18271MD/W	V141	\$79.13
Std Sprinkler Wrench		21475M/B	V207	\$75.37
Wrench for Recessed		13655W/B	V207	\$145.25

HIGH PRESSURE
Standard/Quick Response
Extended Coverage
Glass Bulb
Horizontal Sidewall



SIN: VK612
K Factor: 5.6 (81)
Thread Size: 1/2 inch NPT
Base Part #: 12295

Finish	Temp	Part #	IPG	List Price
Standard Brass	135°F	12295AA	V136	\$70.15
Standard Brass	155°F	12295AB	V136	\$70.15
Standard Brass	175°F	12295AD	V136	\$70.15
Chrome	135°F	12295FA	V136	\$75.18
Chrome	155°F	12295FB	V136	\$75.18
Chrome	175°F	12295FD	V136	\$75.18
White-Polyester ¹	135°F	12295MA/W	V136	\$75.18
White-Polyester	155°F	12295MB/W	V136	\$75.18
White-Polyester	175°F	12295MD/W	V136	\$75.18
Std Sprinkler Wrench		21475M/B	V207	\$75.37
Wrench for Recessed		13655W/B	V207	\$145.25

NOTE - High Pressure (HP) = Working pressure to 250 psi (1724 kPa)

Select Escutcheons - 1/2 inch *			
E1 push-on (chrome, 1/2 in)	06419AF	V200	\$8.04
E1 push-on (white, 1/2 in)	06419AM/W	V200	\$8.04
E2 threaded (chrome, 1/2 in)	11038F	V200	\$8.07

*Refer to Page H-1 for complete list of available escutcheons

Select Escutcheons - 3/4 inch *			
E1 push-on (chrome, 3/4 in)	20369F	V200	\$8.07
E1 push-on (white, 3/4 in)	20369M/W	V200	\$8.07
E2 threaded (chrome, 3/4 in)	11625F	V200	\$8.07

*Refer to Page H-1 for complete list of available escutcheons

(1) Suitable for decorative applications; UL listed for corrosion resistance.

Microtech^{® 2}
Quick Response
Extended Coverage
Glass Bulb
Horizontal Sidewall



SIN: VK630
K Factor: 8.0 (115)
Thread Size: 3/4 inch NPT
Base Part #: 13500

Corridor Sprinkler
Quick Response
Extended Coverage
Glass Bulb
Horizontal Sidewall



SIN: VK638
K Factor: 8.0 (115)
Thread Size: 3/4 inch NPT
Base Part #: 17375

Finish	Temp	Part #	IPG	List Price
Standard Brass	135°F	13500AA	V141	\$73.87
Standard Brass	155°F	13500AB	V141	\$73.87
Standard Brass	175°F	13500AD	V141	\$73.87
Chrome	135°F	13500FA	V141	\$79.13
Chrome	155°F	13500FB	V141	\$79.13
Chrome	175°F	13500FD	V141	\$79.13
White-Polyester	135°F	13500MA/W	V141	\$79.13
White-Polyester	155°F	13500MB/W	V141	\$79.13
White-Polyester	175°F	13500MD/W	V141	\$79.13
Black-Polyester	135°F	13500MA/B	V141	\$101.82
Black-Polyester	155°F	13500MB/B	V141	\$101.82
Black-Polyester	175°F	13500MD/B	V141	\$101.82
Nickel PTFE (ENT) ²	135°F	13500JNA	V188.A	\$150.38
Nickel PTFE (ENT)	155°F	13500JNB	V188.A	\$150.38
Nickel PTFE (ENT)	175°F	13500JND	V188.A	\$150.38
Std Sprinkler Wrench		21475M/B	V207	\$75.37
Wrench for Rcsd HSW		13655W/B	V207	\$145.25

Finish	Temp	Part #	IPG	List Price
Standard Brass	155°F	17375AB	V142	\$81.09
Standard Brass	175°F	17375AD	V142	\$81.09
Chrome	155°F	17375FB	V142	\$81.09
Chrome	175°F	17375FD	V142	\$81.09
Chrome	200°F	17375FE	V142	\$81.09
White-Polyester	155°F	17375MB/W	V142	\$81.09
White-Polyester	175°F	17375MD/W	V142	\$81.09
White-Polyester	200°F	17375ME/W	V142	\$81.09
Black-Polyester	155°F	17375MB/B	V142	\$87.36
Black-Polyester	175°F	17375MD/B	V142	\$87.36
Std Sprinkler Wrench		21475M/B	V207	\$75.37
Wrench for Rcsd HSW		13655W/B	V207	\$145.25

Microtech^{® 1,2}
Quick Response
Extended Coverage
Glass Bulb
Domed Concealed Sidewall



SIN: VK630-D⁺
K Factor: 8.0 (115)
Thread Size: 3/4 inch NPT
Base Part #: 13500A-X

Corridor Sprinkler
Quick Response
Extended Coverage
Glass Bulb
Domed Concealed Sidewall



SIN: VK638-D¹
K Factor: 8.0 (115)
Thread Size: 3/4 inch NPT
Base Part #: 17375A-X

Finish	Temp	Part #	IPG	List Price
Standard Brass	135°F	13500AAX	V141	\$89.27
Standard Brass	175°F	13500ADX	V141	\$89.27
Nickel PTFE (ENT) ²	135°F	13500JNAX	V188.A	\$177.71
Nickel PTFE (ENT)	175°F	13500JNDX	V188.A	\$177.71
Spk Wrench Domed Cncl		13655W/B	V207	\$145.25

Finish	Temp	Part #	IPG	List Price
Standard Brass	135°F	17375AAX	V142	\$81.09
Standard Brass	175°F	17375ADX	V142	\$81.09
Spk Wrench Domed Cncl		13655W/B	V207	\$145.25

Domed Cover Plate¹

Base Part #: 13501

Finish	Temp	Part #	IPG	List Price
Chrome	135°F	13501FA	V214	\$38.29
Chrome	165°F	13501FC	V214	\$38.29
Painted White	135°F	13501MA/W	V214	\$38.29
Painted White	165°F	13501MC/W	V214	\$38.29
Painted Ivory	135°F	13501MA/I	V214	\$48.64
Painted Ivory	165°F	13501MC/I	V214	\$48.64
Painted Black	135°F	13501MA/B	V214	\$48.64
Painted Black	165°F	13501MC/B	V214	\$48.64

- (1) Cover plates sold separately.
Cover plates are also available in custom colors at an additional charge (see pg F-8).
- (2) Electroless Nickel PTFE (ENT) plating is UL Listed and FM Approved for corrosion resistance.



Mirage^{®1}
Quick Response
Extended Coverage
Glass Bulb
Concealed Pendent

SIN: VK632
K Factor: 5.6 (81)
Thread Size: 1/2 inch NPT
Base Part #: 14613A



Mirage^{®1}
Quick Response
Extended Coverage
Glass Bulb
Concealed Pendent

SIN: VK634
K Factor: 8.0 (115)
Thread Size: 3/4 inch NPT
Base Part #: 14535A

Finish	Temp	Part #	IPG	List Price
Standard Brass	135°F	14613AA	V137	\$84.05
Standard Brass	155°F	14613AB	V137	\$84.05
Standard Brass	175°F	14613AD	V137	\$84.05
Standard Brass	200°F	14613AE	V137	\$84.05
Heavy Duty Spk Wrench		14047W/B	V207	\$145.25
Cabinet Wrench/Cap Tool		14031	V205	\$29.74

Finish	Temp	Part #	IPG	List Price
Standard Brass	135°F	14535AA	V137	\$105.51
Standard Brass	155°F	14535AB	V137	\$105.51
Standard Brass	175°F	14535AD	V137	\$105.51
Standard Brass	200°F	14535AE	V137	\$105.51
Heavy Duty Spk Wrench		14047W/B	V207	\$145.25
Cabinet Wrench/Cap Tool		14031	V205	\$29.74

Available with standard, large diameter, or square cover plates. See following page for details.



ELO Mirage^{®1}
Quick Response
Extended Coverage
LIGHT HAZARD
Fusible Link
Concealed Pendent

SIN: VK636
K Factor: 11.2 (161)
Thread Size: 3/4 inch NPT
Base Part #: 16102A



ELO Mirage^{®1}
Quick Response
Extended Coverage
ORDINARY HAZARD
Fusible Link
Concealed Pendent

SIN: VK538
K Factor: 11.2 (161)
Thread Size: 3/4 inch NPT
Base Part #: 17115A

Finish	Temp	Part #	IPG	List Price
Standard Brass	165°F	16102AC	V137	\$128.37
Standard Brass	205°F	16102AE	V137	\$128.37
Heavy Duty Spk Wrench		15467W/B	V207	\$145.25
Cabinet Wrench/Cap Tool		15466	V205	\$29.74

Finish	Temp	Part #	IPG	List Price
Standard Brass	165°F	17115AC	V137	\$143.58
Standard Brass	205°F	17115AE	V137	\$143.58
Heavy Duty Spk Wrench		15467W/B	V207	\$145.25
Cabinet Wrench/Cap Tool		15466	V205	\$29.74

The VK636 and VK538 sprinklers require ELO cover plate (p/n 15765_). See following page for details.

(1) Cover plates sold separately. See following page for details.



EC Flat Concealed HSW
Light Hazard
Quick Response
Extended Coverage
Fusible Link
Flat Concealed Sidewall

SIN: VK680
K Factor: 8.0 (115)
Thread Size: 3/4 inch NPT
Base Part #: 17114AC

VK680 Cover Plate
 Diameter = 3-5/16 inches



Finish	Temp	Part #	IPG	List Price
Standard Brass	165°F	17114AC	V143	\$133.73
Heavy Duty Spk Wrench		16208W/R	V207	\$145.25
Limited Use Spk Wrench		16267	V207	\$29.77

Finish	Temp	Part #	IPG	List Price
Chrome	135°F	16207FA	V213	\$70.23
White	135°F	16207MA/W	V213	\$40.61
Ivory	135°F	16207MA/I	V213	\$48.82
Black	135°F	16207MA/B	V213	\$48.82
Cover Installation Tool		14867	V205	\$13.11

Standard Cover Plate

Diameter = 2-3/4 inches

Use w/ VK461, 462, 463, 464, 465



Finish	Temp	Part #	IPG	List
Polished Chrome	135°F	13504FA	V208	\$34.90
Polished Chrome	165°F	13504FC	V208	\$34.90
White	135°F	13504MA/W	V208	\$34.90
White	165°F	13504MC/W	V208	\$34.90
Ivory	135°F	13504MA/I	V209	\$43.67
Ivory	165°F	13504MC/I	V209	\$43.67
Black	135°F	13504MA/B	V209	\$43.67
Black	165°F	13504MC/B	V209	\$43.67
Bright Brass	135°F	13504BA	V209	\$43.67
Bright Brass	165°F	13504BC	V209	\$43.67
Brushed Brass	135°F	13504BA/B	V209	\$43.67
Brushed Brass	165°F	13504BC/B	V209	\$43.67
Antique Brass	135°F	13504BA/A	V209	\$43.67
Antique Brass	165°F	13504BC/A	V209	\$43.67
Brushed Copper	135°F	13504EA/B	V209	\$43.67
Brushed Copper	165°F	13504EC/B	V209	\$43.67
Brushed Chrome	135°F	13504FA/B	V209	\$43.67
Brushed Chrome	165°F	13504FC/B	V209	\$43.67

Large Cover Plate

Diameter = 3-5/16 inches

Use w/ VK461, 462, 463, 464, 465



Finish	Temp	Part #	IPG	List
Polished Chrome	135°F	13642FA	V208	\$34.90
Polished Chrome	165°F	13642FC	V208	\$34.90
White	135°F	13642MA/W	V208	\$34.90
White	165°F	13642MC/W	V208	\$34.90
Ivory	135°F	13642MA/I	V209	\$43.67
Ivory	165°F	13642MC/I	V209	\$43.67
Black	135°F	13642MA/B	V209	\$43.67
Black	165°F	13642MC/B	V209	\$43.67
Bright Brass	135°F	13642BA	V209	\$43.67
Bright Brass	165°F	13642BC	V209	\$43.67
Brushed Brass	135°F	13642BA/B	V209	\$43.67
Brushed Brass	165°F	13642BC/B	V209	\$43.67
Antique Brass	135°F	13642BA/A	V209	\$43.67
Antique Brass	165°F	13642BC/A	V209	\$43.67
Brushed Copper	135°F	13642EA/B	V209	\$43.67
Brushed Copper	165°F	13642EC/B	V209	\$43.67
Brushed Chrome	135°F	13642FA/B	V209	\$43.67
Brushed Chrome	165°F	13642FC/B	V209	\$43.67

Square Cover Plate

Use w/ VK461, 462, 463, 464, 465



Finish	Temp	Part #	IPG	List
Polished Chrome	135°F	15394FA	V210	\$60.07
Polished Chrome	165°F	15394FC	V210	\$60.07
White	135°F	15394MA/W	V210	\$57.66
White	165°F	15394MC/W	V210	\$57.66
Ivory	135°F	15394MA/I	V209	\$43.67
Ivory	165°F	15394MC/I	V210	\$57.66
Black	135°F	15394MA/B	V210	\$57.66
Black	165°F	15394MC/B	V210	\$57.66
Bright Brass	135°F	15394BA	V210	\$70.32
Bright Brass	165°F	15394BC	V210	\$70.32
Brushed Brass	135°F	15394BA/B	V210	\$70.32
Brushed Brass	165°F	15394BC/B	V210	\$70.32
Antique Brass	135°F	15394BA/A	V210	\$70.32
Antique Brass	165°F	15394BC/A	V210	\$70.32
Brushed Copper	135°F	15394EA/B	V210	\$70.32
Brushed Copper	165°F	15394EC/B	V210	\$70.32
Brushed Chrome	135°F	15394FA/B	V210	\$70.32
Brushed Chrome	165°F	15394FC/B	V210	\$70.32

Mirage ELO Cover Plate

Diameter = 3-5/16 inches

Use w/ VK469, VK636, VK538



Finish	Temp	Part #	IPG	List
Polished Chrome	135°F	15765FA	V208	\$34.90
Polished Chrome	165°F	15765FC	V208	\$34.90
White	135°F	15765MA/W	V208	\$34.90
White	165°F	15765MC/W	V208	\$34.90
Ivory	135°F	15765MA/I	V209	\$43.67
Ivory	165°F	15765MC/I	V209	\$43.67
Black	135°F	15765MA/B	V209	\$43.67
Black	165°F	15765MC/B	V209	\$43.67

Please refer to page H-6 for information on Stainless Steel cover plates.



Microfast® Model M
Quick Response
Extended Coverage
FUSIBLE LINK¹
Upright Sprinklers

Finish	Temp	Part #	IPG	List Price
VK535 - 11.2 (161) K Factor - 3/4 in NPT - UPRIGHT				
Standard Brass	165°F	14139AC	V139	\$130.70
Standard Brass	205°F	14139AE	V139	\$130.70
Chrome	165°F	14139FC	V139	\$152.93
Chrome	205°F	14139FE	V139	\$152.93
White-Polyester	165°F	14139MC/W	V139	\$152.93
White-Polyester	205°F	14139ME/W	V139	\$152.93
Std Sprinkler Wrench		05118CW/B	V207	\$145.25



Microfast® Model M
Quick Response
Extended Coverage
FUSIBLE LINK¹
Pendent Sprinklers

Finish	Temp	Part #	IPG	List Price
VK537 - 11.2 (161) K Factor - 3/4 in NPT - PENDENT				
Standard Brass	165°F	14611AC	V139	\$130.70
Standard Brass	205°F	14611AE	V139	\$130.70
Chrome	165°F	14611FC	V139	\$152.93
Chrome	205°F	14611FE	V139	\$152.93
White-Polyester	165°F	14611MC/W	V139	\$152.93
White-Polyester	205°F	14611ME/W	V139	\$152.93
Std Sprinkler Wrench		05118CW/B	V207	\$145.25
Wrench for Recessed		11663W/B	V207	\$145.25



Microfast® Model M
Quick Response
Extended Coverage
FUSIBLE LINK¹
Pendent Sprinklers

Finish	Temp	Part #	IPG	List Price
VK601 - 5.6 (81) K Factor - 1/2 in NPT - PENDENT				
Standard Brass	165°F	13969AC	V135	\$72.67
Standard Brass	205°F	13969AE	V135	\$72.67
Chrome	165°F	13969FC	V135	\$84.38
Chrome	205°F	13969FE	V135	\$84.38
White-Polyester	165°F	13969MC/W	V135	\$84.38
White-Polyester	205°F	13969ME/W	V135	\$84.38
Std Sprinkler Wrench		21475M/B	V207	\$75.37
Wrench for Recessed		13655W/B	V207	\$145.25



Microfast® Model M
Quick Response
Extended Coverage
FUSIBLE LINK¹
Pendent Sprinklers

Finish	Temp	Part #	IPG	List Price
VK603 - 8.0 (115) K Factor - 3/4 in NPT - PENDENT				
Standard Brass	165°F	18277AC	V135	\$91.08
Standard Brass	205°F	18277AE	V135	\$91.08
Chrome	165°F	18277FC	V135	\$93.58
Chrome	205°F	18277FE	V135	\$93.58
White-Polyester	165°F	18277MC/W	V135	\$93.58
White-Polyester	205°F	18277ME/W	V135	\$93.58
Std Sprinkler Wrench		21475M/B	V207	\$75.37
Wrench for Recessed		13655W/B	V207	\$145.25



Microfast® Model M
Quick Response
Extended Coverage
FUSIBLE LINK¹
Pendent Sprinklers

Finish	Temp	Part #	IPG	List Price
VK617 - 11.2 (161) K Factor - 3/4 in NPT - PENDENT				
Standard Brass	165°F	14141AC	V138	\$122.44
Standard Brass	205°F	14141AE	V138	\$122.44
Chrome	165°F	14141FC	V138	\$133.03
Chrome	205°F	14141FE	V138	\$133.03
White-Polyester	165°F	14141MC/W	V139	\$152.93
White-Polyester	205°F	14141ME/W	V139	\$152.93
Std Sprinkler Wrench		05118CW/B	V207	\$145.25
Wrench for Recessed		11663W/B	V207	\$145.25

Select Escutcheons - 1/2 inch *			
E1 push-on (chrome, 1/2 in)	06419AF	V200	\$8.04
E1 push-on (white, 1/2 in)	06419AM/W	V200	\$8.04
E2 threaded (chrome, 1/2 in)	11038F	V200	\$8.07

*Refer to Page H-1 for complete list of available escutcheons

Select Escutcheons - 3/4 inch *			
E1 push-on (chrome, 3/4 in)	20369F	V200	\$8.07
E1 push-on (white, 3/4 in)	20369M/W	V200	\$8.07
E2 threaded (chrome, 3/4 in)	11625F	V200	\$8.07

*Refer to Page H-1 for complete list of available escutcheons

(1) † Also available with ENT (Electroless Nickel PTFE) plating for corrosion resistance (special order with extended lead time).
Contact customer service for price and availability. Special order ENT plated sprinklers may not have listings/approvals.



Microfast® Model M
Quick Response
Extended Coverage
FUSIBLE LINK¹
Horizontal Sidewall

Finish	Temp	Part #	IPG	List Price
VK609 - 5.6 (81) K Factor - 1/2 in NPT -HSW (QREC)				
Standard Brass	165°F	13971AC	V136	\$70.15
Standard Brass	205°F	13971AE	V136	\$70.15
Chrome	165°F	13971FC	V136	\$75.18
Chrome	205°F	13971FE	V136	\$75.18
White-Polyester	165°F	13971MC/W	V136	\$75.18
White-Polyester	205°F	13971ME/W	V136	\$75.18
Std Sprinkler Wrench		21475M/B	V207	\$75.37
Wrench for Recessed		13655W/B	V207	\$145.25



Microfast® Model M
Quick Response
Extended Coverage
FUSIBLE LINK¹
Horizontal Sidewall
HIGH PRESSURE

Finish	Temp	Part #	IPG	List Price
VK613 - 5.6 (81) K Factor - 1/2 in NPT - HSW (HP)				
Standard Brass	165°F	13973AC	V136	\$76.26
Standard Brass	205°F	13973AE	V136	\$76.26
Chrome	165°F	13973FC	V136	\$78.59
Chrome	205°F	13973FE	V136	\$78.59
White-Polyester	165°F	13973MC/W	V136	\$78.59
White-Polyester	205°F	13973ME/W	V136	\$78.59
Std Sprinkler Wrench		21475M/B	V207	\$75.37
Wrench for Recessed		13655W/B	V207	\$145.25



Microfast® Model M
Quick Response
Extended Coverage
FUSIBLE LINK¹
Pendent
HIGH PRESSURE

Finish	Temp	Part #	IPG	List Price
VK611 - 5.6 (81) K Factor - 1/2 in NPT - Pendent (HP)				
Standard Brass	165°F	13972AC	V135	\$84.98
Standard Brass	205°F	13972AE	V135	\$84.98
Chrome	165°F	13972FC	V135	\$88.58
Chrome	205°F	13972FE	V135	\$88.58
White-Polyester	165°F	13972MC/W	V135	\$88.58
White-Polyester	205°F	13972ME/W	V135	\$88.58
Std Sprinkler Wrench		21475M/B	V207	\$75.37
Wrench for Recessed		13577W/B	V207	\$145.25

NOTE - High Pressure (HP) = Working pressure to 250 psi (1724 kPa)

Select Escutcheons - Recessed Pendent Sprinklers*



Recessed Escutcheon
Model E-1 (push-on)
(includes cup & adapter)
(OD = 3-1/16" / 78 mm)

Finish	Size	Part #	IPG	List Price
Bright Brass	1/2"	06419AB	V201	\$38.09
Polished Chrome	1/2"	06419AF	V200	\$8.04
White	1/2"	06419AM/W	V200	\$8.04
Black	1/2"	06419AM/B	V201	\$16.65



Threaded Escutcheon
Model E-2 (thread-on)
(includes cup & adapter)
(OD = 3-1/8" / 80 mm)

Polished Chrome	1/2"	11038F	V200	\$8.07
White	1/2"	11038M/W	V200	\$8.07

*Refer to Page H-1 for complete list of available escutcheons

(1) Also available with ENT (Electroless Nickel PTFE) plating for corrosion resistance (special order with extended lead time).
Contact customer service for price and availability. Special order ENT plated sprinklers may not have listings/approvals.