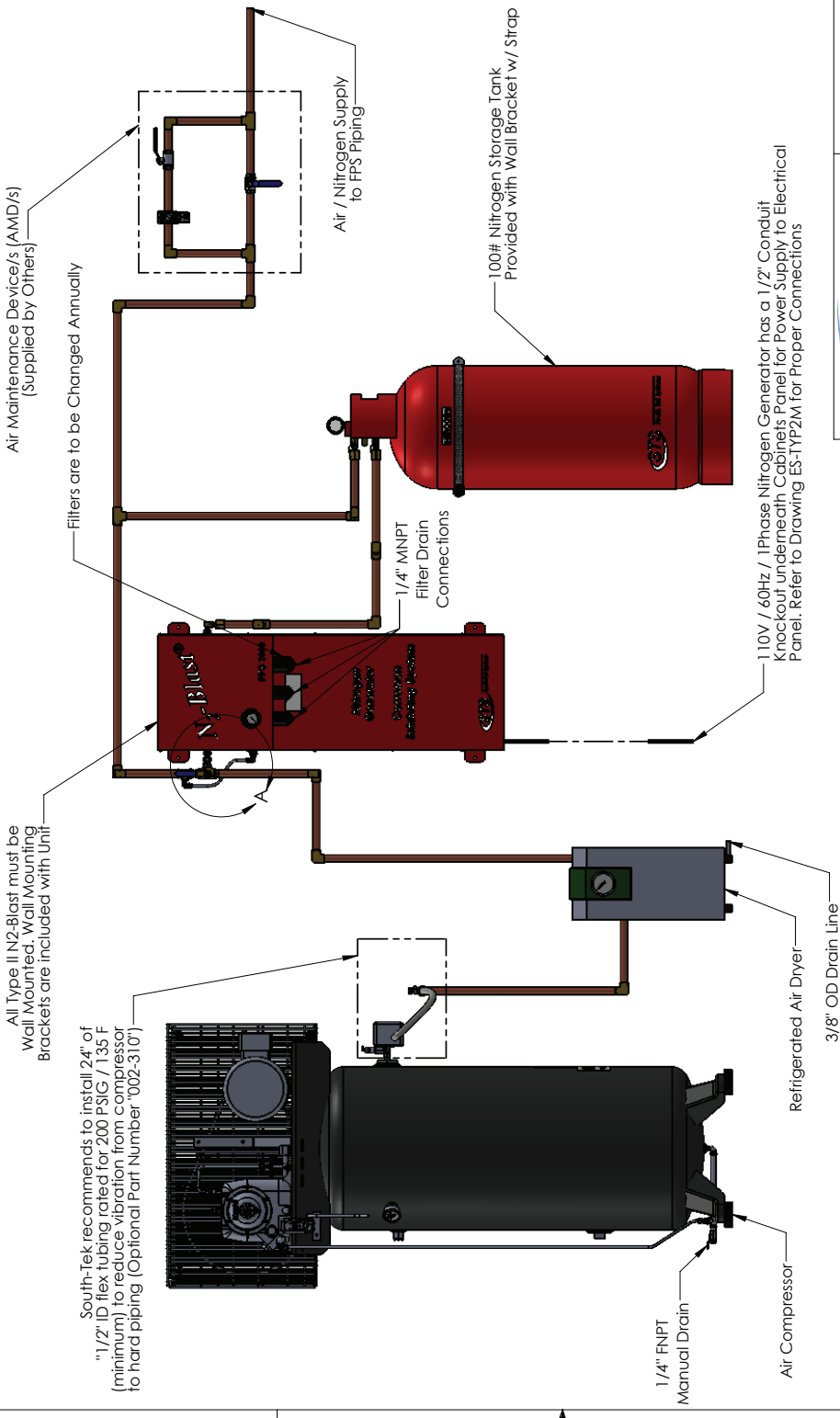


8 7 6 5 4 3 2 1



All Type II N2-Blast must be Wall Mounted. Wall Mounting Brackets are included with Unit

South-Tek recommends to install 24" of 1/2" ID flex tubing rated for 200 PSIG / 1.35 F (minimum) to reduce vibration from compressor to hard piping (Optional Part Number "002-310")

Filters are to be Changed Annually (Supplied by Others)

1/4" FNPT Manual Drain

Refrigerated Air Dryer

3/8" OD Drain Line

Air Compressor

110V / 60Hz / 1Phase Nitrogen Generator has a 1/2" Conduit Knockout underneath Cabinets Panel for Power Supply to Electrical Panel. Refer to Drawing ES-TYP2M for Proper Connections

100# Nitrogen Storage Tank Provided with Wall Bracket w/ Strap

1/4" MNPT Filter Drain Connections

Air / Nitrogen Supply to FPS Piping

Filters are to be Changed Annually (Supplied by Others)

AIR BYPASS

←

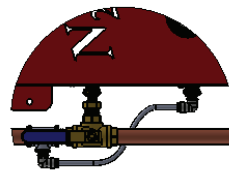
WITH GREEN HANDLE DOWN (NORMAL OPERATION)

↑

AIR BYPASS HANDLE UP

NOTE: SHOULD THE HANDLE BE IN THE UPWARD POSITION, THE NITROGEN GENERATOR WILL BE BYPASSED BY AIR. THIS WILL ILLUMINATE A RED LIGHT ON THE NITROGEN GENERATOR (AND SIGNAL ALARM) SUPPLYING AIR TO THE SYSTEM. TO RETURN TO NORMAL OPERATION, THE HANDLE IS TURNED TO THE OUTWARD POSITION, RETURNING TO NORMAL OPERATION AND ALLOWING NITROGEN TO BE MAINTAINED WITHIN THE DRY OR STORAGE TANK. THIS HANDLE IS NOT TO BE USED ONLINE TO PREVENT SPIN WALEY PIPE CORROSION.

CONTACT SOUTH-TEK SYSTEMS WITH QUESTIONS:  
PHONE: 888.526.6284



DETAIL A  
SCALE 1:7

Air Bypass Alarm Option

<b>South-Tek SYSTEMS</b>		<b>N2-Blast, Type II, General Arrangement with (CH) Vertical Compressor, Refrigerated Air Dryer and Air Bypass</b>	
UNLESS OTHERWISE SPECIFIED DIMENSIONS ARE IN INCHES	MATERIAL:	FINISH:	WEIGHT:
TOLERANCES: Whole Number Dim's: ± .1 One Place Decimals: ± .2 Two Place Decimals: ± .05 Three Place Decimals: ± .005 Angular: ± .05	DRAWN BY: PJS	CHECKED BY:	APPROVED BY: JN
PROPRIETARY AND CONFIDENTIAL THE INFORMATION CONTAINED IN THIS DRAWING IS THE SOLE PROPERTY OF SOUTH-TEK SYSTEMS. ANY REPRODUCTION IN PART OR AS A WHOLE WITHOUT THE WRITTEN PERMISSION OF SOUTH-TEK SYSTEMS IS PROHIBITED.	DATE: 11/28/14	DATE: 6/5/15	DATE: 6/5/15
PROJECT NAME: South-Tek Systems	SIZE: B	SCALE: 1:14	SHEET: 3 of 3
NUMBER: GA-TYP2M-CH-03	REVISION: 1		REVISION: 1

- General Notes:
- 1) All Components within this Drawing are for Illustration Purposes only. For more information about the Compressor, Dryer and Nitrogen Generator refer to Drawings: DD-AC-CH, DD-RD-SC-10, DD-RD-CH-15 and DD-TYP2M-FPS respectfully.
  - 2) Refer to the Manufacturer's Manual for Anchoring Requirements of the Compressor and Dryer.
  - 3) All Type II Nitrogen Generators must be Wall Mounted.
  - 4) All Connections are 1/2" NPT F unless otherwise specified.
  - 5) All Plumbing, Fittings, Valves, and hardware between components are Supplied by Others.
  - 6) Air Compressor, Dryer and Storage Tank must be installed on a hard flat surface.

1 2 3 4 5 6 7 8