

Fig. 907 - 4-Way Longitudinal Sway Brace Attachment



Component of State of California OSHPD Approved Seismic Restraints System

Size Range — 1" x 1", 1" x 1¼" and 1¼" x 1¼" bracing pipe.

Material — Carbon Steel, hardened cone (or cup) point engaging screw

Function — For bracing pipe against sway and seismic disturbances, Functions as a longitudinal brace connection when attached to a lateral brace pipe. Bracing connection must be positioned as close as physically possible to the braced pipe (No more than 3" away). Must be used only with TOLCO bracing components. When used in conjunction with TOLCO Fig. 1000, this combination bracing restricts piping movement in tension and compression both laterally and longitudinally.

Approvals — Underwriter's Laboratories Listed in the USA (**UL**) and Canada (**cUL**). Included in our Seismic Restraints Catalog approved by the State of California Office of Statewide Health Planning and Development (**OSHPD**). For additional load, spacing and placement information relating to OSHPD projects, please refer to the TOLCO Seismic Restraint Systems Guidelines.

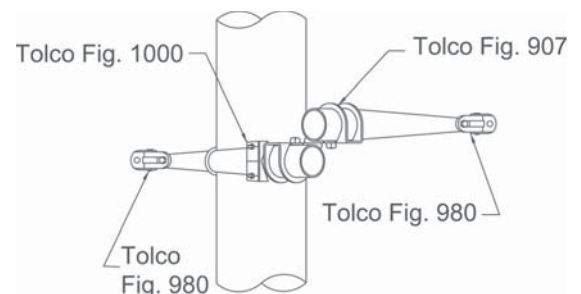
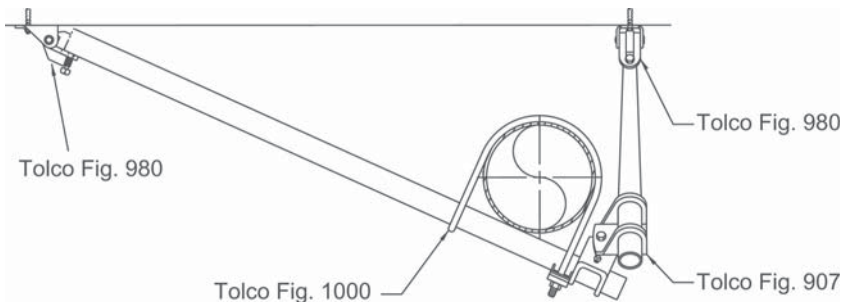
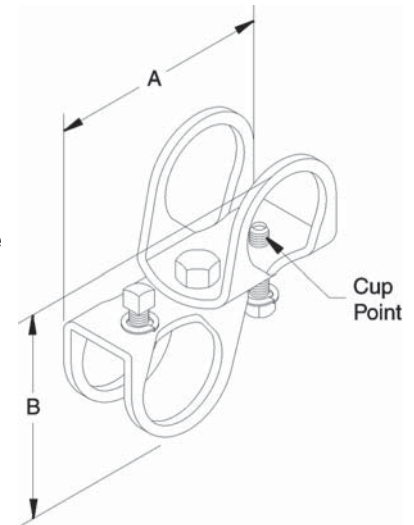
Installation Instructions — The Fig. 907 is a transitional component of a longitudinal 4-way sway brace assembly. It is intended to be installed with the longitudinal and lateral "bracing pipes", TOLCO structural attachment fittings, Fig. 909, 910 and 980 and the Fig. 1000 TOLCO "braced pipe" fitting, to form a complete bracing assembly. NFPA 13 and/or OSHPD guidelines should be followed.

To Install — Attach the Fig. 907 over the lateral "bracing pipe" to within 3" of its position relative to the "braced pipe" connection. Adjust brace angle and tighten bolts until heads bottom out on surface.

Finish — Plain

Note — Available in Electro-Galvanized and HDG finish.

Order By — Figure number, bracing pipe sizes and finish.



Dimensions • Weights

| Pipe Size | A | B | Max. Design Load Lbs.* | Approx. Wt./100 |
|-----------|----|-----|------------------------|-----------------|
| 1 x 1 | 4¾ | 4¾ | 655* | 103 |
| 1 x 1¼ | 5⅛ | 4⅓⅛ | 655* | 107 |
| 1¼ x 1¼ | 5⅝ | 5¼ | 655* | 109 |

* Load will accommodate up to 4" pipe at maximum spacing.

TOLCO® brand bracing components are designed to be compatible **ONLY** with other TOLCO® brand bracing components, resulting in a Listed seismic bracing assembly. **DISCLAIMER** — NIBCO does **NOT** warrant against the failure of TOLCO® brand bracing components, in the instance that such TOLCO® brand bracing components are used in combination with products, parts or systems which are not manufactured or sold under the TOLCO® brand. NIBCO shall **NOT** be liable under any circumstance for any direct or indirect, incidental or consequential damages of any kind, including but not limited to loss of business or profit, where non-TOLCO brand bracing components have been, or are used.