



## TECHNICAL DATA

## VK 1230™ EXTINGUISHING AGENT ASSEMBLIES

The technical data described herein is for components of the Viking VK 1230™. For design, installation, and operation instructions, refer to the latest edition of VK 1230™ original source documents: Installation and Service Manual (Part No. 17095), Design Manual (Part No. 17093), and Operation Manual (Part No. 17094).

The Viking Corporation, 210 N Industrial Park Drive, Hastings MI 49058

Telephone: 269-945-9501 Technical Services: 877-384-5464 Fax: 269-818-1680 Email: techsvcs@vikingcorp.com

### 1. DESCRIPTION

The Viking VK 1230™ Fire Extinguishing System uses 3M™ Novec™ 1230 extinguishing fluid that is stored in the system's extinguishing agent container(s) until system activation. The container assembly includes a welded steel cylinder filled with Novec™ 1230 fluid, assembled with the following components:

- Cylinder valve with burst disc, contact pressure gauge with pressure switch, protective neck ring, protective cylinder cap and valve cap.
- Three cylinder sizes are available: 140, 280, 390, and 500 lbs. (52, 106, 147, and 180 l).
- Cylinders are designed, manufactured, and labeled in accordance with the US Dept. of Transportation Standard DOT 4BW-500.
- Cylinders can only be installed in the upright position.
- To create the pressure necessary for the agent to be released, the extinguishing agent container is superpressurized with nitrogen at a pressure of 360 psi (25 bar).
- The fire extinguishing agent concentration to be used depends on the fire load expected in these areas.

Each cylinder is equipped with a special high-speed opening cylinder valve:

- Operates according to the differential pressure principle and has a piston and a brass housing.
- Includes a burst disc to protect from excessive pressure.
- Includes a contact pressure gauge for the indication and the monitoring of the filling pressure.
- A pressure switch that changes the state of an electrical dry contact during release is included with the gauge.
- The valve is appropriate for high discharge rates and makes the extinguishant discharge possible within 10 seconds.
- Available in the nominal sizes 1-1/2" for the 140 lb. cylinder, and 2" for 280, 390, and 500 lb. cylinders.

An optional manual release assembly with pipeline limit switch (pressure switch) can be ordered separately for installation in the piping:

- The pipeline limit switch is required with manual release installation per NFPA 2001.
- The status of the pressure switch can be monitored by the fire agent release control panel.

A cylinder nameplate label is attached to the extinguishing agent container:

- Contains maintenance and filling information, as well as information about the filling quantity.
- A UL Listing label and FM Approval label are also attached to the cylinder.

Protective caps are used to protect sensitive components (e.g. valves) of the extinguishing agent containers:

- Protects the valves from damage during transport.

**NOTE:** The protective valve caps must be attached before each transport.

An installation clamp is required to be ordered with each container assembly (available separately):

- The cylinder must be attached to a wall using the designated installation clamp.

**NOTE:** System detection is controlled by an approved system release control panel with compatible detection.

### 2. LISTINGS AND APPROVALS



**UL Listed:** Clean Agent Extinguishing System Unit



**FM Approved:** Clean Agent Fire Extinguishing System

### 3. TECHNICAL DATA

- Available since 2011.
- Minimum and Maximum Agent Storage Temperatures: 0 °F to 122 °F (-18 °C to 50 °C)
- Minimum and Maximum Temperatures of Protected Spaces per UL and FM: 60 °F to 80 °F (15.6 °C to 26.7 °C)



Viking Technical Data may be found on  
The Viking Corporation's Web site at  
<http://www.vikinggroupinc.com>.  
The Web site may include a more recent  
edition of this Technical Data Page.

	<b>TECHNICAL DATA</b>	<b>VK 1230™ EXTINGUISHING AGENT ASSEMBLIES</b>
---	-----------------------	--

**The Viking Corporation, 210 N Industrial Park Drive, Hastings MI 49058**

**Telephone: 269-945-9501 Technical Services: 877-384-5464 Fax: 269-818-1680 Email: techsvcs@vikingcorp.com**

**Cylinder Specifications**

- Fill Density: Min. 25 lb/ft<sup>3</sup> (400 kg/m<sup>3</sup>), Max. 74.9 lb/ft<sup>3</sup> (1200 kg/m<sup>3</sup>) at 69.8 °F (21 °C)

**NOTE:** The accurate filling quantity depends on the necessary extinguishant quantity and the layout of the piping.

**Valve Specifications**

- Working Pressure: 360 psi (25 bar) at 70 °F (21 °C)
- Max. Working Pressure: 508 psi (35 bar) at 122 °F (50 °C)
- Response Pressure at Bursting Disc: 725 psi +/- 73 psi (50 bar +/- 5 bar) at 68 °F (20 °C)

**Gauge Specifications**

- Contact Types:
  - Standard setting is normally open (NO)
  - Can be specified and ordered as normally closed (NC)
- Switching Point: 324 psi (22.3 bar) +/- 19 psi (1.31 bar)
- Agent: FK-5-1-12 (Novec™ 1230)
- Maximum Pressure: 725 psi (50 bar)
- Indicating Range: 0 to 870 psi (60 bar)
- Gauge Nominal Size: 2" (50 mm)
- Accuracy Class: 1.6

**Material Standards**

Cylinder: Welded Steel, Powder Coated Red, DOT Standard 4WB-500

Protective Neck Ring: AISI 1015 Hot Rolled Steel, Powder Coated Black

Cylinder Valve:

- Housing, Adapter, Screws: Brass
- Spindles, Seal Retainer: Brass
- O-ring/Seal of Seat: NBR
- Bursting Disk: Nickel
- Spring: Steel

Gauge: Aluminum

- Measuring Network: Copper Alloy
- Contact Material: Gold-plated

Protective Cylinder Cap: AISI 1026, Hot Rolled Steel, Powder Coated Black

Installation Clamp: Steel

**Ordering Information**

The cylinders are filled according to the ordering designations. Extinguishant cylinders are completely assembled and filled, consisting of a steel cylinder, neck ring, protective cap, cylinder valve with burst disc, contact pressure gauge with pressure switch, and cylinder nameplate label. For a complete Single Container System, the following must be ordered separately: release devices, optional manual release assembly with pipeline limit switch (pressure switch), discharge nozzles, hose and NPT connections, installation clamp, and warning signs (refer to Tables 4a and 4b). An approved release control panel with compatible detection system is also required. NOTE: For a complete Multi Container System, order the above items, plus additional items indicated in Table 4a on page 100e and Figure 4 on page 100f.

To order the Viking VK 1230™ Extinguishing Agent Single Container Assemblies, refer to the following part numbers:

- 140 lb. (52 l) container assembly: 16527
- 280 lb. (106 l) container assembly: 16531
- 390 lb. (147 l) container assembly: 16535
- 500 lb. (180 l) container assembly: 18024

**NOTE:** When ordering one of the above assemblies, the agent weight (3 digits) is added as a suffix to the assembly number. All assemblies will be shipped with a normally open (NO) pressure switch as standard. If a normally closed pressure switch is desired, then the code "NC" will follow the agent weight in the suffix.

*Example:* A 140 lb. (52 l) cylinder with 62 lb of agent and a standard NO pressure switch = Part No. 16527-062.

Cylinder Size Nominal Fill Size	Novec™ 1230 Minimum Fill	Novec™ 1230 Maximum
140 lb. (52 l)	46 lb.	137 lb.
280 lb. (106 l)	94 lb.	280 lb.
390 lb. (147 l)	130 lb.	388 lb.
500 lb. (180 l)	159 lb.	476 lb.

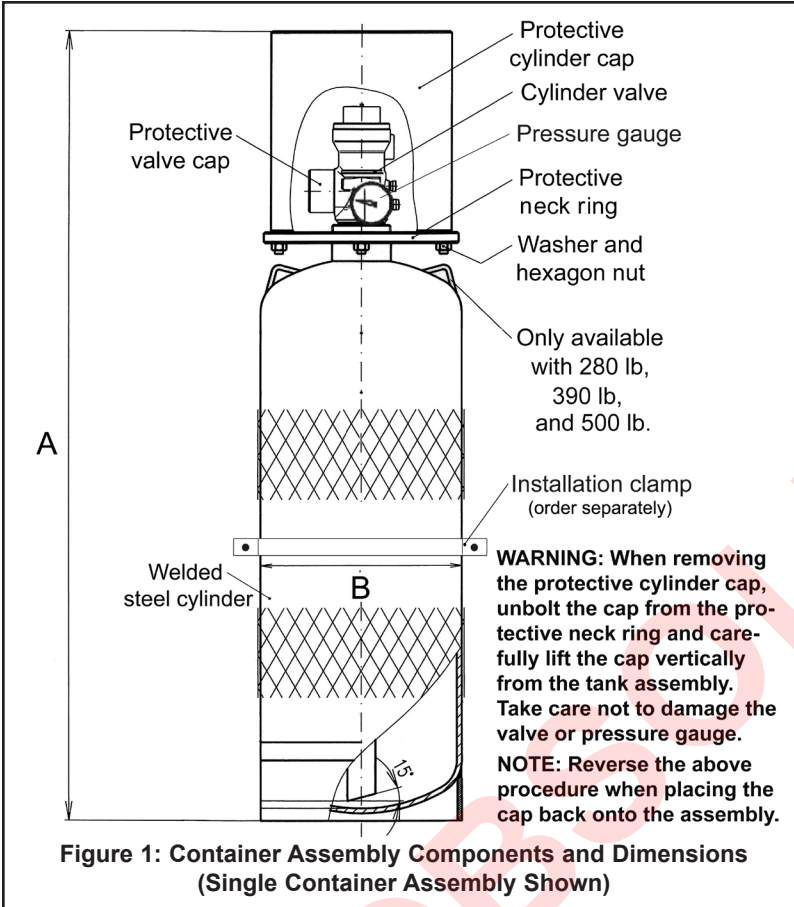


TECHNICAL DATA

VK 1230™ EXTINGUISHING AGENT ASSEMBLIES

The Viking Corporation, 210 N Industrial Park Drive, Hastings MI 49058

Telephone: 269-945-9501 Technical Services: 877-384-5464 Fax: 269-818-1680 Email: techsvcs@vikingcorp.com



**TABLE 2: CONTAINER ASSEMBLY DIMENSIONS**

Cylinder Size	A	B
	Inches (mm)	Inches (mm)
140 lb. (52 l)	56-1/2 (1,435)	10 (254)
280 lb. (106 l)	49 (1,240)	16 (407)
390 lb. (147 l)	62 (1,575)	16 (407)
500 lb. (180 l)	75 (1,910)	16 (407)

\* Standard dimension  
 Note: All dimensions are approximate. Deviations in dimensions can result due to the tolerances.

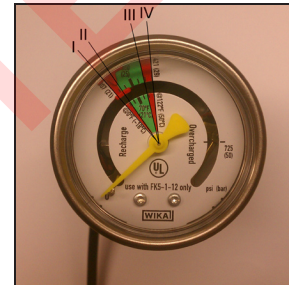


Figure 2: Contact Pressure Gauge Markings

**Gauge Indicating Range:**

- I. Pressure at minimum temperature 0 °F (-18 °C)
- II-III. Pressure from 90% to 110% from charging pressure (below 307 psi (21 bar) and above 421 psi (29 bar) at 70 °F (21 °C)
- IV. Pressure at max. temperature 122 °F (50 °C)

**Gauge Color Marked:**

- 0 to I.....Recharge
- I to II.....Red
- II to III.....Green
- III to IV.....Red
- IV to max....Overcharge

**4. INSTALLATION, SERVICE, AND MAINTENANCE**



The VK 1230™ Fire Extinguishing System must be installed, serviced, and maintained in accordance with the Installation and Service Manual, Design Manual, and Operation Manual (part numbers 17095, 17094, and 17093) and NFPA 2001: Standard on Clean Agent Fire Extinguishing Systems and applicable NFPA standards. In addition, the Authority Having Jurisdiction may have additional maintenance, testing and inspection requirements that must be followed.

**Failure to follow these instructions could cause improper system operation, resulting in serious personal injury and/or property damage.**

**NOTICE:** The building owner is responsible for maintaining the fire extinguishing system and devices in proper operating condition. Any system maintenance or testing that involves placing a detection system out of service may eliminate the fire protection of that system. Prior to proceeding, notify all Authorities Having Jurisdiction. Consideration should be given to employment of a fire patrol in the affected area.

**5. OPERATION**

Refer to the VK 1230™ Fire Extinguishing System Operation Manual.

**6. AVAILABILITY**

VK 1230™ Fire Extinguishing System Container Assemblies are available through a network of domestic and international distributors. See The Viking Corporation web site for the closest distributor or contact The Viking Corporation.

**7. GUARANTEE**

For details of warranty, refer to Viking's current list price schedule or contact Viking directly.



TECHNICAL DATA

VK 1230™ EXTINGUISHING AGENT ASSEMBLIES

The Viking Corporation, 210 N Industrial Park Drive, Hastings MI 49058

Telephone: 269-945-9501 Technical Services: 877-384-5464 Fax: 269-818-1680 Email: techsvcs@vikingcorp.com

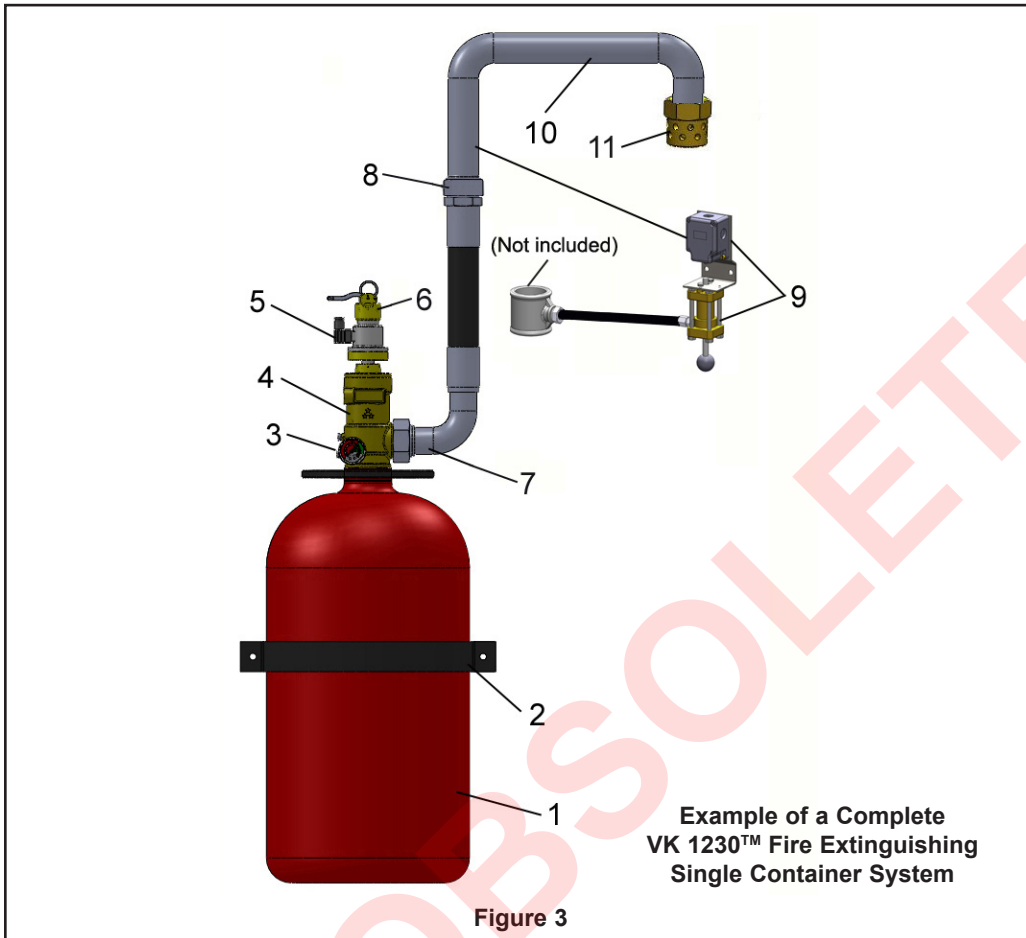


TABLE 3: SYSTEM COMPONENTS FOR A COMPLETE VK 1230™ SINGLE CONTAINER SYSTEM WITH ELECTRIC RELEASE DEVICE

Item No.	Description
1	Extinguishing Agent Container
2	Installation Clamp**
3	Contact Pressure Gauge with Pressure Switch
4	Cylinder Valve with Burst Disc
5	Release Device, Electric**
6	Release Device, Manual (optional, also see Item 9)**
7	Hose (90° Shown)**
8	NPT Connection**
9	Pipeline Limit Pressure Switch (optional)**†
10	Pipeline**
11	Discharge Nozzle**

\*\*Ordered separately. Refer to Tables 4a and 4b.

† Required if manual release device is installed (available as part of the manual release assembly).

**NOTE:** Additional components are required for a Multi Container System. Refer to Table 4a on page 100e and Figure 4 on page 100f.

	<h2 style="margin: 0;">TECHNICAL DATA</h2>	<h3 style="margin: 0;">VK 1230™ EXTINGUISHING AGENT ASSEMBLIES</h3>
---	--	---

The Viking Corporation, 210 N Industrial Park Drive, Hastings MI 49058  
 Telephone: 269-945-9501 Technical Services: 877-384-5464 Fax: 269-818-1680 Email: techsvcs@vikingcorp.com

**TABLE 4a: ORDERING SYSTEM COMPONENTS FOR A COMPLETE VK 1230™ CONTAINER SYSTEM**

Description	Part No.	Data Page	
<b>Extinguishing Agent Container Assembly</b>			
140 lb. (52 l) container assembly	16527	100a-f	
280 lb. (106 l) container assembly	16531		
390 lb. (147 l) container assembly	16535		
500 lb. (180 l) container assembly	18024		
Installation Clamp (140 lb. cylinder)	17157		
Installation Clamp (280, 390, and 500 lb. cylinders)	17161		
<p><b>NOTE:</b> When ordering one of the above assemblies, the agent weight (3 digits) is added as a suffix to the assembly number. All assemblies will be shipped with a normally open (NO) pressure switch as standard. If a normally closed switch is desired, then the code "NC" will follow the agent weight in the suffix. <i>Example:</i> A 140 lb. (52 l) cylinder with 62 lb of agent and a NO pressure switch = Part No. 16527-062.</p>			
<b>Release Devices</b>			
Electric Release Device (includes Reset Tool)	16360	102a-c	
Reset Tool for Electric Release Device (Replacement)	17096		
Manual Release Assembly (optional) (includes Manual Release Device, Pipeline Limit Pressure Switch, 39" hose, and adapters)	17551	102e-f	
Pipeline Limit Pressure Switch (Replacement)	17103	102e-f	
Adapter, 1/4" NPT to M12 x 1.5 Hose (Replacement)	17552		
Adapter, Pressure Switch G 1/4 to M12 x 1.5 Hose (Replacement)	17553		
<p><small>NOTE: For replacement hose, refer to pilot line hose part numbers indicated below.</small></p>			
<b>Additional Components Needed for Multi Container Systems (also refer to Figure 4 on page 100f)</b>			
Pneumatic Release Device	17197	102a-c	
Check Valve	17153	104a-c	
ISO-NPT Check Valve Adapter	17154	104a-c	
Pilot Line Hoses	23" (600 mm) long	16376	
	39" (1,000 mm) long	16377	104a-c
	59" (1,500 mm) long	16378	
Pilot Line Adapter	17155	104a-c	
Pilot Line Safety Valve	17156	104a-c	
<b>Warning Signs</b>			
Outside Warning Sign	16008	107a-b	
Inside Warning Sign	16009		

**TABLE 4b: ORDERING SYSTEM COMPONENTS FOR A COMPLETE VK 1230™ CONTAINER SYSTEM**

Description	Part No.	Description	Part No.	Data Page	
<b>Straight Hose</b>		<b>Hose to NPT Connections</b>			
1-7/8" UN x 1-1/2" ISO	16379	1-1/2" ISO x 1-1/2" NPT	17100	104a-c	
2-1/2" UN x 2" ISO	16381	2" ISO x 2" NPT	17099		
<b>90° Hose</b>		<b>Valve to NPT Connections</b>			
1-7/8" UN x 1-1/2" ISO	16380	1-7/8" UN x 1-1/2" NPT	17102		
2-1/2" UN x 2" ISO	16382	2-1/2" UN x 2" NPT	17101		
<b>Discharge Nozzles (180° Spray Angle)</b>					
Thread Size	Min. Orifice Diameter	Max. Orifice Diameter	Part No.	Data Page	
1/2" NPT	0.118"	3 mm	0.512" 13 mm	16606	105a-b
1" NPT	0.118"	3 mm	0.886" 22.5 mm	16607	
1-1/2" NPT	0.118"	3 mm	1.398" 35.5 mm	16608	
2" NPT	0.118"	3 mm	1.752" 44.5 mm	16609	
<b>Discharge Nozzles (360° Spray Angle)</b>					
1/2" NPT	0.118"	3 mm	0.512" 13 mm	16610	105a-b
1" NPT	0.118"	3 mm	0.886" 22.5 mm	16611	
1-1/2" NPT	0.118"	3 mm	1.398" 35.5 mm	16612	
2" NPT	0.118"	3 mm	1.752" 44.5 mm	16613	
<p><b>NOTE:</b> Orifice diameter gradations are in 0.001 inch increments. The nozzle base part number is followed by a three-digit number that refers to the orifice diameter. <i>Example:</i> A 1/2" NPT nozzle with a 180° pattern, and an orifice diameter of 0.220" = Part No. 16606-220.</p>					



TECHNICAL DATA

VK 1230™ EXTINGUISHING AGENT ASSEMBLIES

The Viking Corporation, 210 N Industrial Park Drive, Hastings MI 49058  
 Telephone: 269-945-9501 Technical Services: 877-384-5464 Fax: 269-818-1680 Email: techsvcs@vikingcorp.com

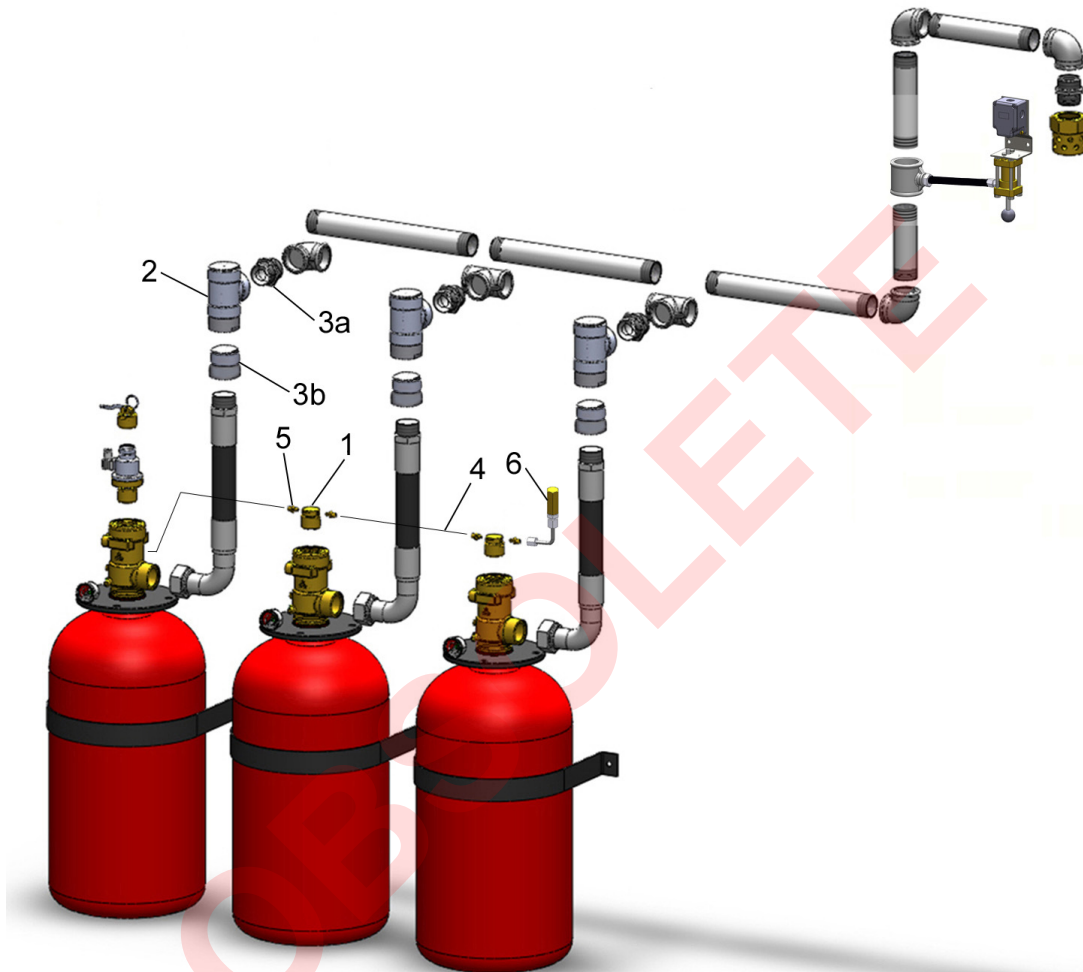


Figure 4: Example of a Complete VK 1230™ Fire Extinguishing Multi Container System

TABLE 5: ADDITIONAL SYSTEM COMPONENTS REQUIRED FOR A VK 1230™ MULTI CONTAINER SYSTEM\*\*\*

Item No.	Description
1	Pneumatic Release Device
2	Check Valve
3a and 3b††	ISO-NPT Check Valve Adapter
4	Pilot Line
5	Pilot Line Adapter (one required for connecting each pilot line end and for connecting each pilot line safety valve)
6	Pilot Line Safety Valve

\*\*\*Components required in addition to the items indicated in Figure 3 for a Single Container System. Refer to Table 4a on page 100e.

†† Item 3b is needed only if connecting to NPT threaded pipe or hose.