



TECHNICAL DATA SHEET

CONCEALED SPRINKLER COVER PLATE ASSEMBLIES

1. PRODUCT IDENTIFICATION

This document covers Viking sprinkler cover plate products for both residential and commercial use. Hereafter, the products are referred to as:

Cover plate(s).

2. INTENDED USE

Cover plates are specifically tested and listed and/or approved with the compatible sprinkler for which they are designed. Cover plates must be used in accordance with:

1. the cover plate's compatibility matrix. Refer to Tables 1-3.
2. the compatible sprinkler's Listings, Approvals, and associated design requirements as defined by the recognized design and installation standards issued. For example NFPA, FM, EN, VdS, or LPCB.
3. the latest revisions of all applicable manufacturer documentation.



Viking cover plate assemblies shall be used **ONLY** with Viking concealed sprinklers, as indicated on the sprinkler's technical data sheet. For more details, refer to each sprinkler's applicable technical data sheet.

Governmental codes, ordinances, and standards may apply and may differ from one another.

WARNING

Cancer and Reproductive Harm www.P65Warning.ca.gov

3. LISTING AND APPROVALS



cULus Listed - Screen print (brass, painted, or stainless steel only)



FM Approved - Screen print (brass, painted, or stainless steel only)

3.1 cULus Listing and FM Approval Requirements and Details

For sprinkler-specific cULus Listing or FM Approval details, refer to the appropriate Viking sprinkler data pages.



TECHNICAL DATA SHEET

CONCEALED SPRINKLER COVER PLATE ASSEMBLIES

4. ORDERING

NOTICE

The cover plate assemblies described in this document are temperature-sensitive devices designed to be used in combination with specific sprinklers manufactured by Viking. Refer to the tables below for the appropriate sprinkler data pages.

⚠ WARNING

Risk of death. All cover plates presented on this document are temperature-sensitive and are produced for specific sprinklers. For questions, call Viking Technical Services.

4.1 Ordering Procedure

1. If ordering a cover plate alone, skip to step 3.
2. Select a sprinkler that is Listed or Approved for the intended application.

NOTE: Verify the sprinkler is Listed or Approved for the intended usage by referring to the specific sprinkler's technical data page for complete ordering, Listing, and Approval specifications. Also refer to the tables in this document.

3. Choose a cover plate base part number that is compatible and Listed or Approved to be used with the specific sprinkler. Refer to the specific sprinkler's data page and the tables in this document.
4. Add the suffix for the desired finish.
5. Add the suffix for the desired sprinkler temperature rating.

Example: 23174FC = 200 °F (93 °C) temperature rated VK494 sprinkler with an polished chrome finish.



Figure – 1: VK4621 and Cover 23463



TECHNICAL DATA SHEET

CONCEALED SPRINKLER COVER PLATE ASSEMBLIES

5. INSPECTIONS, TESTS, AND MAINTENANCE

5.1 Requirements

Refer to NFPA 25 for all inspection, test, and maintenance requirements.

6. OPERATION

When a sprinkler cover plate reaches its specified operating temperature, the solder holding the cover plate to the base assembly melts and the plate detaches from the base. Once the cover plate has fallen away, the sprinkler's operating element is exposed; continued heating causes the operating element to fuse or shatter (depending on the sprinkler type), releasing the sealing assembly. All water that flows through the sprinkler orifice strikes the deflector or flow shaper, forming a uniform spray pattern to extinguish or control the fire.

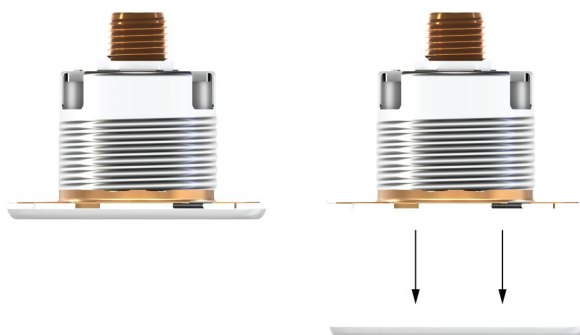


Figure – 2: Cover Plate Detaches

7. TECHNICAL SPECIFICATIONS

7.1 Sprinkler Specifications

For sprinkler information and details, refer to the appropriate sprinkler technical documents.

7.2 Thread-On vs. Push-On Cover Plate Models

The major difference between thread-on and push-on cover plates is in the installation style. Thread-on cover plate models have a base with two solid nodules, whereas push-on cover plate models have a base with six flexible tabs. The increased number of flexible tabs allows for ease of installation by pushing the cover plate assembly into the adapter cup on the sprinkler.

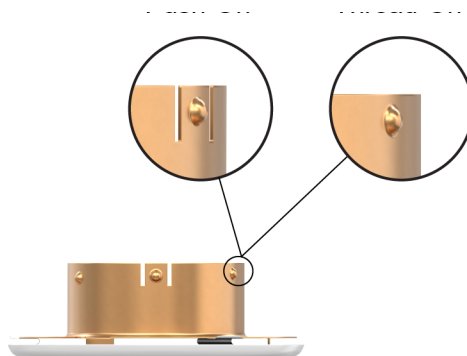


Figure – 3: Thread-On vs Push-On Cover Plate

7.3 Dimensions

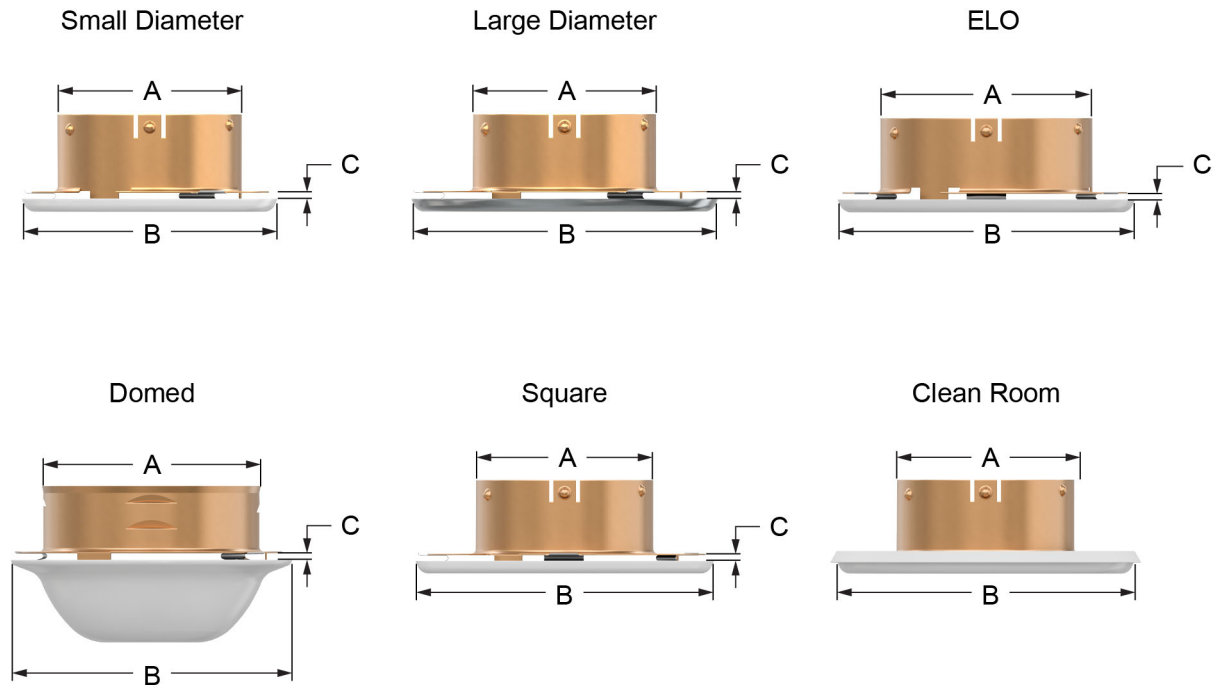


Figure – 4: Cover Plate Dimensions

Cover Type	Dimensions		
	A	B	C
Small diameter	1-5/8" (41 mm)	2-3/4" (70 mm)	1/8" (3 mm)
Large diameter	1-5/8" (41 mm)	3-5/16" (84 mm)	1/8" (3 mm)
Small diameter Stainless Steel	2" (51 mm)	2-3/4" (70 mm)	1/8" (3 mm)
Large diameter Stainless Steel	2" (51 mm)	3-5/16" (84 mm)	1/8" (3 mm)
ELO	2-3/8" (60 mm)	3-5/16" (84 mm)	1/8" (3 mm)
Square	2" (51 mm)	3-5/16" (84 mm)	1/8" (3 mm)
Domed	2-3/8"	3-1/8" (80 mm)	1/8" (3 mm)
Clean Room	2-3/8" (60 mm)	3-5/16" (84 mm)	1/8" (3 mm)



TECHNICAL DATA SHEET

CONCEALED SPRINKLER COVER PLATE ASSEMBLIES

7.4 Cover Plate Assembly Materials of Construction

NOTICE: Do not disassemble the cover plate assembly.

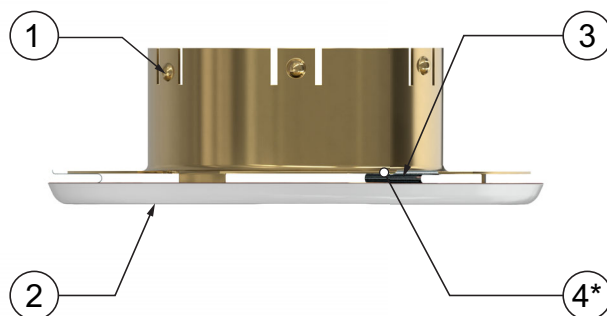


Figure – 5 Cover Plate Assembly Components

Reference	Description	Materials
1	Base	Brass UNS-C26000 or UNS-C26800
2	Cover	Varies
3	Springs	Nickel alloy
4	Solder (*not shown)	Eutectic

7.5 Cover Plate Accessory: Expansion Plate

The Viking expansion plate is intended as an optional cover plate accessory for earthquake-prone areas. Expansion plates must be ordered separately.

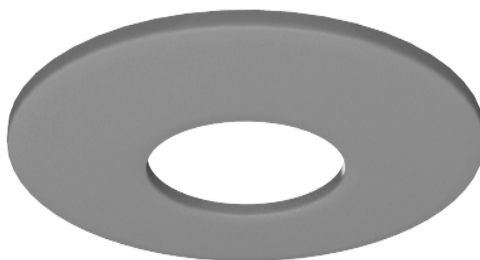


Figure – 6 Expansion Plate

Expansion Plate Part Number	Diameter		Description
	Outside	Inside	
12620	5" (127 mm)	2-3/16" (56 mm)	Used with model E-1 and E-2 escutcheons. May also be used with dry recessed sprinklers, dry standard adjustable sprinklers, and flat plate concealed sprinklers.
13128	5" (127 mm)	2-15/32" (64 mm)	Used with domed concealed sprinklers.
16340	5-5/16" (135 mm)	2-1/2" (63 mm)	Used with concealed sprinklers VK538 and VK636.



TECHNICAL DATA SHEET

CONCEALED SPRINKLER COVER PLATE ASSEMBLIES

8. COVER PLATE ASSEMBLIES SPECIFICATIONS

8.1 Commercial Cover Plate Assemblies

Table-1: Commercial Cover Plate Assemblies

Cover Part Number ^{1,5}	Cover Type	Available Finish Suffixes ²	Cover Temperature Rating & Suffix	Cover Diameter		Sprinkler Models	Sprinkler Tech Data Pages
<u>Finish suffix key:</u> Polished chrome (F), brushed chrome (F-/B), bright brass (B), antique brass (B-/A), brushed brass (B-/B), brushed copper (E-/B), painted white (M-/W), painted ivory (M-/I), painted black (M-/B)							
09804	Small diameter	F, F-/B, B, B-/A, B-/B, E-/B, M-/W, M-/I, M-/B	165 °F (74 °C) = C	2-3/4"	70 mm	VK404 (Obs) VK405 (Obs) VK454 (Obs)	--
11225	Small diameter	F	139 °F (57 °C) = A	2-3/4"	70 mm	VK404 (Obs) VK405 (Obs) VK454 (Obs)	--
11697	Large diameter	F, F-/B, B, B-/A, B-/B, E-/B, M-/W, M-/I, M-/B	139 °F (57 °C) = A	3-5/16"	84 mm	VK404 (Obs) VK405 (Obs) VK454 (Obs)	--
			165 °F (74 °C) = C				
12381	Domed	F, B, M-/W, M-/I, M-/B	139 °F (59 °C) = A	3-1/8"	80 mm	VK102	F_031414
						VK202-D	F_101912
						VK190	F_092003
						VK192	F_081311
						VK194	F_092103
			165 °F (74 °C) = C			VK302	F_092203
						VK352	F_033314
						VK353	F_033414
						VK614/ VK616 (Obs)	F_071814
						VK618 (Obs)	F_061603
13501	Domed	F, M-/W, M-/I, M-/B	139 °F (57 °C) = A (Only for VK631)	3-1/8"	80 mm	VK630	F_102805
			165 °F (74 °C) = C			VK631 (Obs)	--

1. For complete part number, add finish suffix and temperature suffix.

2. Custom colors are also available. Refer to the sprinkler data page.

3. Screen printing is available for this cover. Refer to tables 12.2 and 12.3.

4. (T) = thread-on style and (P) = push-on style. If an indicator is not present, the cover plate is push-on style.



TECHNICAL DATA SHEET

CONCEALED SPRINKLER COVER PLATE ASSEMBLIES

Table-1: Commercial Cover Plate Assemblies

Cover Part Number ^{1,5}	Cover Type	Available Finish Suffixes ²	Cover Temperature Rating & Suffix	Cover Diameter	Sprinkler Models	Sprinkler Tech Data Pages	
<u>Finish suffix key:</u> Polished chrome (F), brushed chrome (F-/B), bright brass (B), antique brass (B-/A), brushed brass (B-/B), brushed copper (E-/B), painted white (M-/W), painted ivory (M-/I), painted black (M-/B)							
23190 ⁴ (T) 23447 ⁴ (P)	Small diameter	F, F-/B, B, B-/A, B-/B, E-/B, M-/W, M-/I, M-/B	139 °F (59 °C) = A	2-3/4"	70 mm	VK461 (Obs)	F_091506
			VK462 & VK463 (Obs)			F_103005	
			VK462, VK464 MRI			F_062908	
			VK464			F_021606	
			VK465 (Obs)			F_032107	
			VK632 & VK634			F_080107	
			VK492 (Obs)			F_101615	
			VK4611			F_061620	
			VK4621			F_102519	
			VK4651			F_040320	
			VK4951			F_040320	
16207 ⁴	Large diameter	F, F-/B, B, B-/A, B-/B, E-/B, M-/W, M-/I, M-/B	139 °F (59 °C) = A	3-5/16"	84 mm	VK481	F_020312
			165 °F (74 °C) = C				
16207 ⁴	Large diameter	F, M-/W, M-/I, M-/B	139 °F (59 °C) = A	3-5/16"	84 mm	VK680	F_050611
1. For complete part number, add finish suffix and temperature suffix. 2. Custom colors are also available. Refer to the sprinkler data page. 3. Screen printing is available for this cover. Refer to tables 12.2 and 12.3. 4. (T) = thread-on style and (P) = push-on style. If an indicator is not present, the cover plate is push-on style.							



TECHNICAL DATA SHEET

CONCEALED SPRINKLER COVER PLATE ASSEMBLIES

Table-1: Commercial Cover Plate Assemblies

Cover Part Number ^{1,5}	Cover Type	Available Finish Suffixes ²	Cover Temperature Rating & Suffix	Cover Diameter	Sprinkler Models	Sprinkler Tech Data Pages	
<u>Finish suffix key:</u> Polished chrome (F), brushed chrome (F-/B), bright brass (B), antique brass (B-/A), brushed brass (B-/B), brushed copper (E-/B), painted white (M-/W), painted ivory (M-/I), painted black (M-/B)							
23174 ⁴ (T) 23463 ⁴ (P)	Large diameter	F, F-/B, B, B-/A, B-/B, E-/B, M-/W, M-/I, M-/B	139 °F (59 °C) = A	3-5/16"	84 mm	VK461 (Obs)	F_091506
			165 °F (74 °C) = C			VK462 & VK463 (Obs)	F_103005
						VK462, VK464 MRI	F_062908
						VK464	F_021606
						VK465 (Obs)	F_032107
						VK632 & VK634	F_080107
						VK492 (Obs)	F_101615
						VK4611	F_061620
						VK4621	F_102519
						VK4651	F_040320
VK4921	F_102519						
23174-/CR (T) 23463-/CR (P)	Large diameter round cleanroom	F-/CR, /W/CR, /I/CR, /B/CR	139 °F (59 °C) = A	3-5/16"	84 mm	VK462 (QR) (Obs)	F_022409
			165 °F (74 °C) = C			VK4621	F_061919
						VK464 (SR)	F_022409
23183-/CR (T) 23473-/CR (P)	Large diameter, Stainless steel cleanroom round	--	139 °F (59 °C) = A	3-5/16"	84 mm	VK462 (QR) (Obs)	F_022409
						VK4621	F_061919
23495-/CR (T) 15765-/CR (P)	Round (large diameter)	F-/CR, /W/CR, /I/CR, /B/CR	139 °F (59 °C) = A	3-5/16"	84 mm	VK469 (QR)	F_120508
			165 °F (74 °C) = C				

1. For complete part number, add finish suffix and temperature suffix.

2. Custom colors are also available. Refer to the sprinkler data page.

3. Screen printing is available for this cover. Refer to tables 12.2 and 12.3.

4. (T) = thread-on style and (P) = push-on style. If an indicator is not present, the cover plate is push-on style.



TECHNICAL DATA SHEET

CONCEALED SPRINKLER COVER PLATE ASSEMBLIES

Table-1: Commercial Cover Plate Assemblies

Cover Part Number ^{1,5}	Cover Type	Available Finish Suffixes ²	Cover Temperature Rating & Suffix	Cover Diameter	Sprinkler Models	Sprinkler Tech Data Pages	
<u>Finish suffix key:</u> Polished chrome (F), brushed chrome (F-/B), bright brass (B), antique brass (B-/A), brushed brass (B-/B), brushed copper (E-/B), painted white (M-/W), painted ivory (M-/I), painted black (M-/B)							
23179 ⁴ (T) 23482 ⁴ (P)	Square (large diameter)	F, F-/B, B, B-/A, B-/B, E-/B, M-/W, M-/I, M-/B	139 °F (59 °C) = A	3-5/16"	84 mm	VK461 (Obs)	F_091506
			165 °F (74 °C) = C			VK462 & VK463 (Obs)	F_103005
						VK464	F_021606
						VK465 (Obs)	F_032107
						VK632 & VK634	F_080107
						VK492 (Obs)	F_101615
						VK4611	F_061620
						VK4621	F_102519
						VK4651	F_040320
						VK4921	F_102519
23495 ⁴ (T) 15765 ⁴ (P)	Round (large diameter)	F, M-/W, M-/I, M-/B	139 °F (59 °C) = A	3-5/16"	84 mm	VK469	F_120508
			165 °F (74 °C) = C			VK636	F_121009
						VK538	F_050511
23183 ⁴ (T) 23473 ⁴ (P)	Stainless steel round (large diameter)	Painted	139 °F (59 °C) = A	3-5/16"	84 mm	VK462 (Obs)	F_100305
			165 °F (74 °C) = C			VK4611	F_061620
						VK4621	F_061919
						VK4651	F_040320
						VK4921	F_102519
23193 ⁴ (T) 23455 ⁴ (P)	Stainless steel round	Painted	139 °F (59 °C) = A	2-3/4"	70 mm	VK462 (Obs)	F_100305
			165 °F (74 °C) = C			VK4611	F_061620
						VK4621	F_061919
						VK4651	F_040320
						VK4921	F_102519
23504 ⁴ (T) 21878 ⁴ (P)	Stainless steel round (large diameter)	Painted	139 °F (59 °C) = A	3-5/16"	84 mm	VK538	F_050511
			165 °F (74 °C) = C				

1. For complete part number, add finish suffix and temperature suffix.

2. Custom colors are also available. Refer to the sprinkler data page.

3. Screen printing is available for this cover. Refer to tables 12.2 and 12.3.

4. (T) = thread-on style and (P) = push-on style. If an indicator is not present, the cover plate is push-on style.



TECHNICAL DATA SHEET

CONCEALED SPRINKLER COVER PLATE ASSEMBLIES

8.2 Residential Cover Plate Assemblies

Table-2: Residential Cover Plate Assemblies

Cover Part Number ^{1,5}	Cover Type	Finishes Suffixes Available ²	Cover Temp. Rating	Cover Diameter	Sprinkler Models	Sprinkler Data Pages
Finish suffix key: Polished chrome (F), brushed chrome (F-/B), bright brass (B), antique brass (B-/A), brushed brass (B-/B), brushed copper (E-/B), painted white (M-/W), painted ivory (M-/I), painted black (M-/B)						
12207	Domed	F, F-/B, B, B-/A, B-/B, E-/B, M-/W, M-/I, M-/B	139 °F (57 °C) = A (Only for VK458 & VK466)	3-1/8"	80 mm	VK458 (Obs) F_092305
						VK466 (Obs) F_091606
			139 °F (57 °C) = A			VK468 F_020206
23179 ⁴ (T) 23482 ⁴ (P)	Square	F, F-/B, B, B-/A, B-/B, E-/B, M-/W, M-/I, M-/B	135 °F (57 °C) = A	2-3/4"	70 mm	VK457 ⁴ (Obs) F_072607
						VK474 (Obs) F_012109
						VK4570 ⁴ (Obs) F_100710
						VK4740 (Obs) F_012811
						VK488 (Obs) F_073012
						VK4880 (Obs) F_061214
						VK494 F_012116
						VK4940 F_120517
						VK496 F_032218
						VK4960 F_012419
						VK498 F_112817
						VK4980 F_120617
10786	Round	F, F-/B, B, B-/A, B-/B, E-/B, M-/W, M-/I, M-/B	139 °F (57 °C) = A	2-3/4"	70 mm	VK425 (Obs) --
1. For complete part number, refer to Viking's current price list. 2. Custom colors are also available. Refer to the sprinkler data page. 3. Screen printing is available for this cover. Refer to tables 12.2 and 12.3. 4. Not compatible with the 165 °F (74 °C) temperature rated covers. 5. (T) = thread-on style and (P) = push-on style. If an indicator is not present, the cover plate is push-on style.						



TECHNICAL DATA SHEET

CONCEALED SPRINKLER COVER PLATE ASSEMBLIES

Table-2: Residential Cover Plate Assemblies

Cover Part Number ^{1,5}	Cover Type	Finishes Suffixes Available ²	Cover Temp. Rating	Cover Diameter	Sprinkler Models	Sprinkler Data Pages	
Finish suffix key: Polished chrome (F), brushed chrome (F-/B), bright brass (B), antique brass (B-/A), brushed brass (B-/B), brushed copper (E-/B), painted white (M-/W), painted ivory (M-/I), painted black (M-/B)							
23174 (T) 23463 (P)	Round (Large diameter)	F, F-/B, B, B-/A, B-/B, E-/B, M-/W, M-/I, M-/B	135 °F (57 °C) = A (Only for VK457, VK474, VK4570, VK4740, VK488, VK4880)	3-5/16"	84 mm	VK457 ⁴ (Obs)	F_072607
			VK474 (Obs)			F_012109	
			VK4570 ⁴ (Obs)			F_100710	
			VK4740 (Obs)			F_012811	
			VK488 (Obs)			F_073012	
			VK4880 (Obs)			F_061214	
			VK494			F_012116	
			VK4940			F_120517	
			VK496			F_032218	
			VK4960			F_012419	
			VK498			F_112817	
			VK4980			F_120617	
1. For complete part number, refer to Viking's current price list. 2. Custom colors are also available. Refer to the sprinkler data page. 3. Screen printing is available for this cover. Refer to tables 12.2 and 12.3. 4. Not compatible with the 165 °F (74 °C) temperature rated covers. 5. (T) = thread-on style and (P) = push-on style. If an indicator is not present, the cover plate is push-on style.							



TECHNICAL DATA SHEET

CONCEALED SPRINKLER COVER PLATE ASSEMBLIES

Table-2: Residential Cover Plate Assemblies

Cover Part Number ^{1,5}	Cover Type	Finishes Suffixes Available ²	Cover Temp. Rating	Cover Diameter	Sprinkler Models	Sprinkler Data Pages	
Finish suffix key: Polished chrome (F), brushed chrome (F-/B), bright brass (B), antique brass (B-/A), brushed brass (B-/B), brushed copper (E-/B), painted white (M-/W), painted ivory (M-/I), painted black (M-/B)							
23179 ⁴ (T) 23482 ⁴ (P)	Square (large diameter)	F, F-/B, B, B-/A, B-/B, E-/B, M-/W, M-/I, M-/B	135 °F (57 °C) = A (Only for VK457, VK474, VK4570, VK4740, VK488, VK4880)	3-5/16"	84 mm	VK457 ⁴ (Obs)	F_072607
			VK474 (Obs)			F_012109	
			VK4570 ⁴ (Obs)			F_100710	
			VK4740 (Obs)			F_012811	
			VK488 (Obs)			F_073012	
			VK4880 (Obs)			F_061214	
			VK494			F_012116	
			VK4940			F_120517	
			VK496			F_032218	
			VK4960			F_012419	
			VK498			F_112817	
			VK4980			F_120617	
16207 ⁴	Round (large diameter)	M-/W, F	139 °F (59 °C) = A	3-5/16"	84 mm	VK480	F_121609
			165 °F (74 °C) = C			VK490	F_032116
			VK4800			F_100810	
23183 ⁴ (T) 23473 ⁴ (P)	Stainless steel round (large diameter)	Painted	139 °F (59 °C) = A	3-5/16"	84 mm	VK494	F_012116
			165 °F (74 °C) = C				
23193 ⁴ (T) 23455 ⁴ (P)	Stainless steel round	Painted	139 °F (59 °C) = A	2-3/4"	70 mm	VK494	F_012116

1. For complete part number, refer to Viking's current price list.

2. Custom colors are also available. Refer to the sprinkler data page.

3. Screen printing is available for this cover. Refer to tables 12.2 and 12.3.

4. Not compatible with the 165 °F (74 °C) temperature rated covers.

5. (T) = thread-on style and (P) = push-on style. If an indicator is not present, the cover plate is push-on style.



TECHNICAL DATA SHEET

CONCEALED SPRINKLER COVER PLATE ASSEMBLIES

8.3 Cover Plate Part Numbers and Associated SIN Numbers

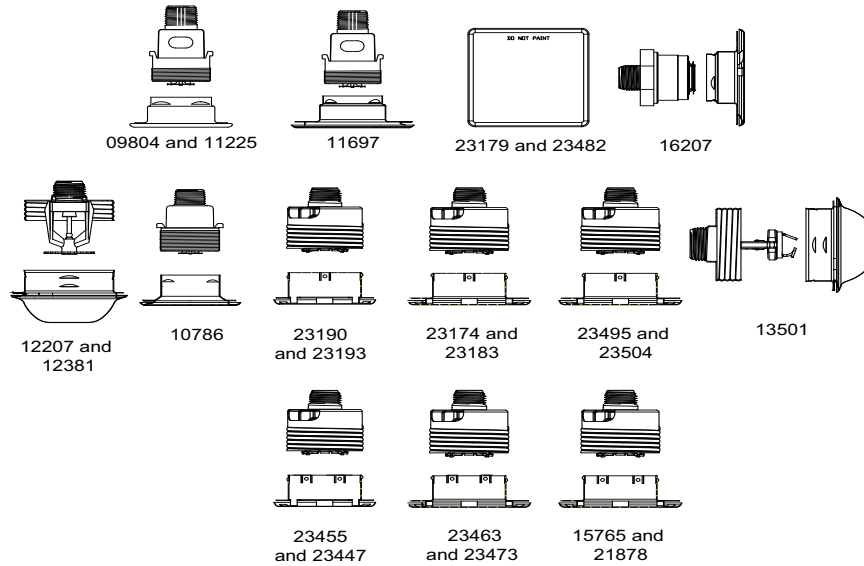


Figure – 7 Cover Plate Associated SINs

Cover Plate Base Part Numbers	Associated SINs	Associated Label Part Nos.
12381	VK102, VK190, VK192, VK194, VK196, VK202-D, VK302, VK352, VK353, VK614/VK616 (Obs), VK618 (Obs)	L12382A, L12382C
09804, 11225	VK404 (Obs), VK454 (Obs)	L09806C, L11226,
09804, 11225	VK405 (Obs)	L09806C, L11226
10786	VK425 (Obs)	L10826
23190, 23174, 23179, 23447, 23463, 23482	VK457 (Obs), VK4570 (Obs), VK461 (Obs), VK463 (Obs), VK464 (Obs), VK465 (Obs), VK474 (Obs), VK4740 (Obs), VK488 (Obs), VK4880 (Obs), VK4940, VK496, VK4960, VK498, VK4980, VK632, VK634, VK492 (Obs)	L23192A, L23176A, L23181C, L23449A, L23465A, L23484A
23190, 23174, 23179, 23193, 23183, 23447, 23463, 23482, 23455, 23473	VK462 (Obs), VK494, VK4611, VK4621, VK4921, VK4651	L23192A, L23176A, L23181C, L23194A, L23185A, L23449A, L23465A, L23484A, L23456A, L23475A
12207	VK458 (Obs), VK466 (Obs), VK468	L12194
13501	VK630, VK631 (Obs)	L13584A, L13584C
15765, 23495	VK469, VK636	L14923A, L14923C, L23497A
16207	VK480, VK4800, VK481, VK490, VK680	L16209A, L16209C
15765, 21878, 23495, 23504	VK538	L14923A, L14923C, L121874A, L23497A, L23505A



TECHNICAL DATA SHEET

CONCEALED SPRINKLER COVER PLATE ASSEMBLIES

9. HANDLING

⚠ CAUTION

Damaged cover plates may not activate properly. Concealed cover assemblies are fragile. To assure satisfactory performance of the product, handle with care.

NOTICE

For complete care, handling, and installation instructions, refer to the sprinkler data page and the appropriate sprinkler general care, installation, and maintenance guide

9.1 General Handling and Storage Instructions

- Do not store sprinklers in environments with temperatures that exceed 100 °F (38 °C), in direct sunlight, or in confined areas that are subject to heat.
- Protect sprinklers and cover assemblies when storing, transporting, handling, and after installation.
 - Use original shipping containers.
 - Sprinklers or cover assemblies should **never** be loose in boxes, bins, or buckets.
- Keep every sprinkler body covered with a protective sprinkler cap during shipping and handling, system testing, and while finish work is being completed.
- Use only the designated Viking sprinkler wrench to install Viking sprinklers. Refer to the appropriate sprinkler technical data page(s) for more details. (**NOTE:** The protective cap is temporarily removed during installation and then placed back on the sprinkler for protection until finish work is completed.)
- Do not over-tighten a sprinkler into a fitting.
- Do not use a sprinkler's deflector to thread or push the sprinkler into a fitting.
- Do not attempt to remove drywall, paint, etc. from the sprinklers.
- **PROTECTIVE CAPS MUST BE REMOVED FROM SPRINKLERS BEFORE PLACING THE SYSTEM IN SERVICE.** Prior to attaching the cover plate assembly, remove the sprinkler's plastic protective cap. .



TECHNICAL DATA SHEET

CONCEALED SPRINKLER COVER PLATE ASSEMBLIES

10. INSTALLATION

10.1 Cover Plate Installation (Or Re-Installation)

After concealed sprinkler installation, system testing, leak repair, and wall and ceiling finishing, install the cover plate assembly. To install the assembly, do the following:

1. Remove the plastic protective cap from the sprinkler.
2. Gently remove the cover plate assembly from the protective box. (Harsh treatment will damage the assembly.)
3. Gently place the base of the cover plate assembly over the installed sprinkler.

NOTE: The size of the ceiling or wall opening depends on the sprinkler model being used. For more details, see the appropriate sprinkler technical data page(s).

4. Carefully pushing or threading the cover plate assembly onto the sprinkler, using even pressure, until the assembly is flush with the ceiling or wall. The maximum adjustment available is 1/2" (13 mm). (For the VK480, VK481, and VK680, the maximum adjustment available is 1/4" (6.4 mm)).

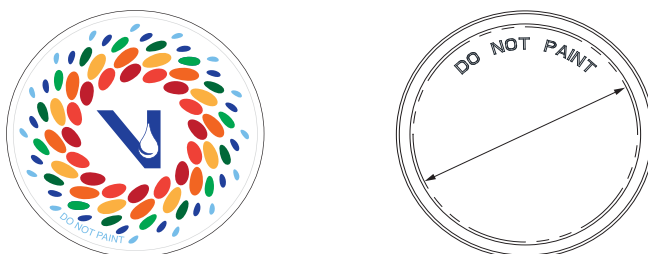
NOTE: Do NOT modify the cover plate assembly. If necessary, re-cut the sprinkler nipple.

10.2 Disassembly

Cover plates can be removed by gently twisting or pulling them off sprinkler bodies. (Whether the assembly needs to be twisted versus pulled depends on the cover plate style being used.)

11. SCREEN PRINTED COVER PLATES

11.1 Screen Printed Cover Plate Area



Screen Print Area:

2-3/4" (70 mm) plates = Ø2.395" (61 mm)

3-5/16" (84 mm) plates = Ø2.957" (75 mm)

Design must include the text:

"Do Not Print"

Figure – 8 Screen Printing Area Details



TECHNICAL DATA SHEET

CONCEALED SPRINKLER COVER PLATE ASSEMBLIES

11.2 Screen Printed Residential Cover Plates

Sprinkler SIN	Cover Plate Base Part Number ¹		Type	Size	UL		FM	
					Ordering Suffix			
	Thread-On	Push-On			A	C	A	C
					139 °F (59 °C)	165 °F (74 °C)	139 °F (59 °C)	165 °F (74 °C)
VK494	23190SC	23447SC	Round	2-3/4" (70 mm)	Yes	Yes		
	23174SC	23463SC	Round	3-5/16" (84 mm)	Yes	Yes		
	23179SC	23482SC	Square	3-5/16" (84 mm)	Yes	Yes		
	23193SC	23455SC	SST Round	2-3/4" (70 mm)	Yes	Yes		
	23183SC	23473SC	SST Round	3-5/16" (84 mm)	Yes	Yes		
VK4940 VK496 VK4960 VK498 VK4980	23190SC	23447SC	Round	2-3/4" (70 mm)	Yes	Yes		
	23174Sc	23463Sc	Round	3-5/16" (84 mm)	Yes	Yes		
	23179SC	23482SC	Square	3-5/16" (84 mm)	Yes	Yes		
VK480 VK4800	Not Available	16207SC	Round	3-5/16" (84 mm)	Yes	--		
VK490	Not Available	16207SC	Round	3-5/16" (84 mm)	Yes	Yes		

¹ Screen printing is available on brass finishes, painted finishes, and/or stainless steel materials.

¹ Screen printing is available on brass finishes, painted finishes, and/or stainless steel materials.

11.3 Screen Printed Commercial Cover Plates

Sprinkler SIN	Cover Plate Base Part Number ¹		Type	Size	UL		FM	
					Ordering Suffix			
					A	C	A	C
	Thread-On	Push-On			139 °F (59 °C)	165 °F (74 °C)	139 °F (59 °C)	165 °F (74 °C)
VK462 (Obs) VK4621	23190SC	23447SC	Round	2-3/4" (70 mm)	Yes	Yes	Yes	Yes
	23174SC	23463SC	Round	3-5/16" (84 mm)	Yes	Yes	Yes	Yes
	23179SC	23482SC	Square	3-5/16" (84 mm)	Yes		Yes	Yes
	23193SC	23455SC	SST Round	2-3/4"(70 mm)	Yes	Yes	Yes	Yes
	23183SC	23473SC	SST Round	3-5/16" (84 mm)	Yes	Yes	Yes	Yes



TECHNICAL DATA SHEET

CONCEALED SPRINKLER COVER PLATE ASSEMBLIES

Sprinkler SIN	Cover Plate Base Part Number ¹		Type	Size	UL		FM	
					Ordering Suffix			
	Thread-On	Push-On			A	C	A	C
					139 °F (59 °C)	165 °F (74 °C)	139 °F (59 °C)	165 °F (74 °C)
VK4611 VK4651	23190SC	23447SC	Round	2-3/4"(70 mm)	Yes	Yes		
	23174SC	23463SC	Round	3-5/16" (84 mm)	Yes	Yes		
	23179SC	23482SC	Square	3-5/16" (84 mm)	Yes			
	23193SC	23455SC	SST Round	2-3/4"(70 mm)	Yes	Yes		
	23183SC	23473SC	SST Round	3-5/16" (84 mm)	Yes	Yes		
VK4921	23190SC	23447SC	Round	2-3/4"(70 mm)	Yes	Yes	Yes	Yes
	23174SC	23463SC	Round	3-5/16" (84 mm)	Yes	Yes	Yes	Yes
	23179SC	23482SC	Square	3-5/16" (84 mm)	Yes	Yes	Yes	Yes
	23193SC	23455SC	SST Round	2-3/4"(70 mm)	Yes	Yes	Yes	Yes
	23183SC	23473SC	SST Round	3-5/16" (84 mm)	Yes	Yes	Yes	Yes
VK461 (Obs)	23190SC	23447SC	Round	2-3/4"(70 mm)	Yes	Yes	Yes	Yes
	23174SC	23463SC	Round	3-5/16" (84 mm)	Yes	Yes	Yes	Yes
	23179SC	23482SC	Square	3-5/16" (84 mm)	Yes		Yes	Yes
VK463 (Obs) VK464, VK465 (Obs) VK632 VK634	23190SC	23447SC	Round	2-3/4"(70 mm)	Yes	Yes		
	23174SC	23463SC	Round	3-5/16" (84 mm)	Yes	Yes		
	23179SC	23482SC	Square	3-5/16" (84 mm)	Yes			
VK492 (Obs)	23190SC	23447SC	Round	2-3/4"(70 mm)	Yes	Yes	Yes	Yes
	23174SC	23463SC	Round	3-5/16" (84 mm)	Yes	Yes	Yes	Yes
	23179SC	23482SC	Square	3-5/16" (84 mm)	Yes	Yes	Yes	Yes
VK481	Not available	16207SC	Round	3-5/16" (84 mm)	Yes	Yes	Yes	Yes
VK680	Not available	16207SC	Round	3-5/16" (84 mm)	Yes			
VK538	23495SC	15765SC	Round	3-5/16" (84 mm)	Yes	Yes		
	23504SC	21878SC	SST Round	3-5/16" (84 mm)	Yes	Yes		
VK469 VK636	23495SC	15765SC	Round	3-5/16" (84 mm)	Yes	Yes		
¹ Screen printing is available on brass finishes, painted finishes, and/or stainless steel materials.								



TECHNICAL DATA SHEET

CONCEALED SPRINKLER COVER PLATE ASSEMBLIES

12. CONTACT

Sprinklers, cover plates, and associated accessories are available through Viking distributors only. For assistance, contact your local Viking sales office. Sales office information can be found on our website:

Americas and Asia: www.vikinggroupinc.com/locations OR Europe, Middle East, Africa (EMEA):
www.viking-emea.com/contact

Manufacturer:

The Viking Corporation
5150 Beltway SE
Caledonia, MI 49316
Tel.: (800) 968-9501
Fax: 269-818-1680
Technical Services: 1-877-384-5464
techsvcs@vikingcorp.com

Importer EU:

Viking S.A.
21, Z.I, Haneboesch
L-4562 Differdange / Nieder Korn
Tel.: +352 58 37 37 – 1
Fax: +352 58 37 36
vikinglux@viking-emea.com

Asia Pacific (APAC) Main Office:

The Viking Corporation (Far East) Pte.
Ltd.
69 Tuas View Square
Westlink Techpark, Singapore 637621
Tel: (+65) 6 278 4061
Fax: (+65) 6 278 4609
vikingAPAC@vikingcorp.com