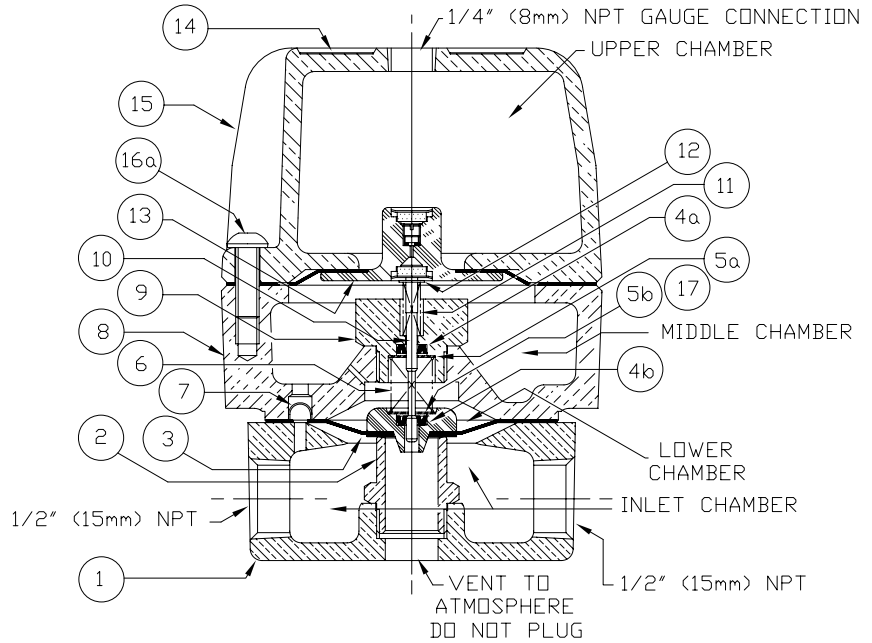
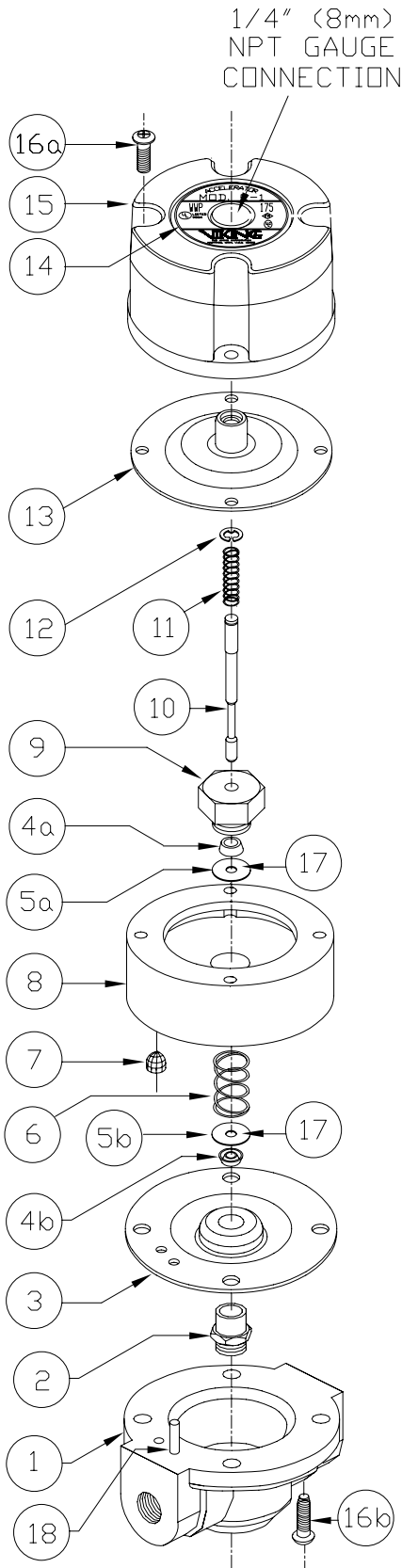




REPLACEMENT PARTS

ACCELERATOR  
MODEL E-1

Manufactured 1993 -



ITEM NO.	PART NUMBER	DESCRIPTION	MATERIAL	NO. REQ'D
1	--	Base	Brass: UNS-C84400	1
2	*	Seat	Brass: UNS-C36000	1
3	*	Clapper Diaphragm	Polyethersulfone/EPDM	1
4a & 4b	*	U-Cup	Buna-N ASTM D2000	2
5a & 5b	*	U-Cup Retainer	Stainless Steel UNS-S30200/ S30400	2
6	*	Housing Spring	Stainless Steel: UNS-S30200	1
7	*	Screen Filter	Stainless Steel: UNS-S30400 40 x 36 mesh screen	1
8	--	Housing	Brass: UNS-C84400	1
9	*	Housing Insert	Brass: UNS-C36000	1
10	*	Actuator Rod	Emralon Coated Brass: UNS- C36000	1
11	*	Actuator Rod Spring	Stainless Steel: UNS-S30200	1
12	*	Retaining Ring	Stainless Steel: UNS-S15700	1
13	05480B	Cover Diaphragm Assembly	Dacon Reinforced Nitrile Rubber/ Polyethersulfone	1
14	--	Cover Label	0.012 (.30mm) Aluminum	1
15	--	Cover	Brass: UNS-C84400	1
16a & 16b	*	Screw, H.S. 1/4-20 x 1	Zinc Plated Steel	8
17	*	Lithium Grease	Lithium Grease	3/8 oz.
18	05472A	Locating Pin	Stainless Steel	1

-- Indicates replacement part not available  
\* Indicates replacement part only available in a Sub-Assembly, as indicated below.

**SUB-ASSEMBLY**

2-7, 9-13, 16-17	12503	Repair Kit - Includes Air Gauge	
------------------------	-------	---------------------------------	--