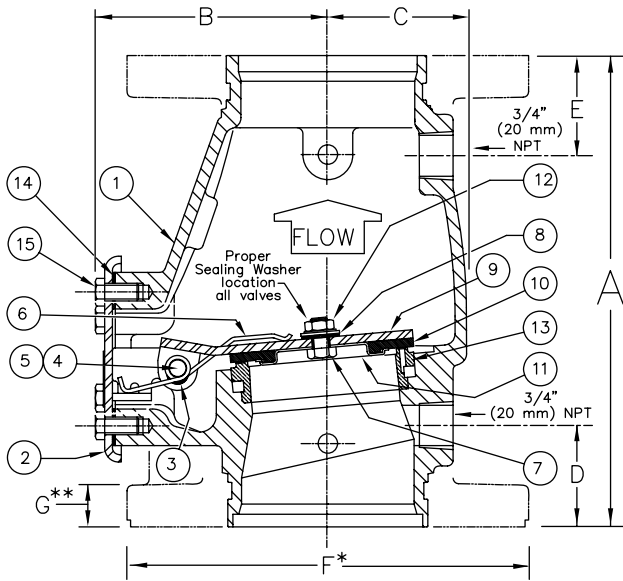




REPLACEMENT PARTS

**ALARM CHECK VALVE
MODEL J-2**

Manufactured 1998 - 2008



SIZE	A	B	C	D	E	F*	G**
3" (80mm)	10-1/8" (257)	4-3/4" (120,7)	2-3/4" (69,9)	1-13/16" (46)	2-1/8" (54)	7-7/8" (200)	3/4" (19,05)
4" (100mm)	10-5/8" (269,9)	5-3/16" (131,8)	3-1/8" (79,4)	1-7/8" (47,6)	2-1/4" (57,2)	9" (228,6)	15/16" (23,81)
6" (150mm)	13-3/8" (340)	6-3/4" (171,5)	4-1/8" (104,8)	2-1/4" (57,2)	2-1/4" (57,2)	11" (279,4)	1" (25,4)
8" (200mm)	17" (431,8)	8-7/8" (225,4)	5" (127)	2-1/4" (57,2)	2-7/8" (73,0)	13-1/2" (342,9)	1-1/8" (28,58)

Dimensions shown in parentheses are millimeters.

* Flanges are optional.

Valve is available Flg X Flg, Flg X Grv, or Grv X Grv.

** 4", 6", and 8" valves are manufactured with sculptured flanges.
Dimension indicates thickness of flange at bolt holes.

ITEM NO.	PART NUMBERS				DESCRIPTION	MATERIAL	NO. REQ'D			
	3" (DN80)	4" (DN100)	6" (DN150)	8" (DN200)			3"	4"	6"	8"
1	--	--	--	--	Body	Ductile Iron, ASTM A536 (65-45-12)	1	1	1	1
2	--	--	--	--	Cover Assembly	E-Coated HSLA Steel, A715 and Stainless Steel, UNS-S30400	1	1	1	1
3	07576	07576	07576		Bushing	Lubricomp 189 Ryton	2	2	2	
4	05355A	04900A	04991A	05334A	Clapper Hinge Pin	Stainless Steel, UNS-S30400	1	1	1	1
5	05445A	05445A	05445A	05369A	Hinge Pin Retaining Ring	Stainless Steel, UNS-S15700	2	2	2	2
6	06021B	05939B	05940B	05952B	Spring	Stainless Steel, UNS-S30200	1	1	1	1
7	*	*			Clapper Hex Nut 3/8"-16	Stainless Steel, UNS-S30400	1	1		
			*	*	Clapper Hex Nut 1/2"-13	Stainless Steel, UNS-S30400			1	1
8	*	*			Sealing Washer 3/8" x 1" O.D.	EPDM and Stainless Steel	1	1		
			*	*	Sealing Washer 1/2" x 1-1/8" O.D.	EPDM and Stainless Steel			1	1
9	08138N/B	08139N/B	08155N/B	08156N/B	Clapper	Teflon® Coated HR Steel UNS-G10180	1	1	1	1
10	*	*	*	*	Clapper Rubber	EPDM	1	1	1	1
11	*	*	*	*	Clapper Rubber Retainer	Stainless Steel, UNS-S30400	1	1	1	1
12	*	*			Screw, Button Head, Socket 3/8"-24 x 1/2 (12,7 mm) lg.	Stainless Steel, UNS-S30400	1	1		
			*		Screw, Button Head, Socket 1/2"-20 x 3/4" (19,0 mm) lg.	Stainless Steel, UNS-S30400			1	1
				*	Screw, Button Head, Socket 1/2"-20 x 7/8" (22,2 mm) lg.	Stainless Steel, UNS-S30400			1	1
13	--	--	--	--	Seat	Brass, UNS-C84400	1	1	1	1
14	05354B	04649B	04992B	05339C	Cover Gasket	SBR Rubber	1	1	1	1
15	01517A	01517A			H.H.C. Screw 3/8"-16 x 3/4" (19,0 mm) lg.	Steel, Zinc Plated	4	6		
			04993B		H.H.C. Screw 1/2"-13 x 7/8" (22,2 mm) lg.	Steel, Zinc Plated			6	
				01922A	H.H.C. Screw 5/8"-11 x 1-1/4" (31,8 mm) lg.	Steel, Zinc Plated				6

-- Indicates replacement part not available

SUB-ASSEMBLY

3, 7-12	09916	09398	09421	09917	Clapper Assembly
7-8, 10-12, 14	09912	09913	09914	09915	Rubber Replacement Kit