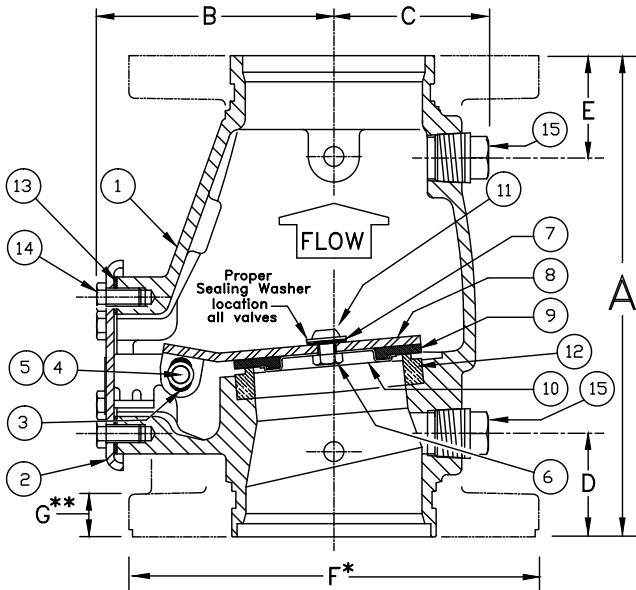




REPLACEMENT PARTS

SWING CHECK VALVE
MODEL D-1 & G-1

Manufactured		
Model D-1	2-1/2"	1992 -
Model G-1	3", 4", 6" & 8"	1994 -



SIZE	A	B	C	D	E	F	G**
2-1/2" (65mm)	9" (228,6)	4-1/2" (114,3)	2-5/8" (66,7)	2" (50,8)	2" (50,8)	Flg-Flg Not Available	
3" (80mm)	10-1/8" (257)	4-13/16" (122,2)	2-11/16" (68,3)	2-9/32" (58,1)	2-9/32" (58,1)	Flg-Flg Not Available	
4" (100mm)	10-5/8" (269,9)	5-3/16" (131,8)	3-1/8" (79,4)	2-1/4" (57,2)	2-1/4" (57,2)	9" (228,6)	15/16" (23,81)
6" (150mm)	13-3/8" (340)	6-13/16" (173,3)	4-1/16" (103,2)	2-1/4" (57,2)	2-1/4" (57,2)	11" (279,4)	1" (25,4)
8" (200mm)	17" (431,8)	8-13/16" (223,4)	5" (127)	2-1/2" (63,4)	2-7/8" (73,0)	13-1/2" (342,9)	1-1/8" (28,58)

Dimensions shown in parentheses are millimeters.

** 4", 6", and 8" valves are manufactured with sculptured flanges.
Dimension indicates thickness of flange at bolt holes.

ITEM NO.	PART NUMBER					DESCRIPTION	MATERIAL	NO. REQ'D				
	D-1 2-1/2" (DN65)	G-1 3" (DN80)	G-1 4" (DN100)	G-1 6" (DN150)	G-1 8" (DN200)			2-1/2"	3"	4"	6"	8"
1	--	--	--	--	--	Body	Ductile Iron, ASTM A536 (65-45-12)	1	1	1	1	1
2	--	--	--	--	--	Cover Assembly, 175 PSI WWP	E-Coated HSLA Steel A715 and Stainless Steel, UNS-S30400	1	1	1	1	1
	--	--	--	--	--	Cover Assembly, 250 PSI WWP	E-Coated HSLA Steel A715 and Stainless Steel UNS-S30400	1	1	1	1	1
3	07576	07576	07576	07576	None	Bushing	Lubricomp 189 Ryton	2	2	2	2	0
4	05355A	05355A	04900A	04991A	05334A	Clapper Hinge Pin	Stainless Steel UNS-S30400	1	1	1	1	1
5	05445A	05445A	05445A	05445A	05369A	Hinge Pin Retaining Ring	Stainless Steel UNS-S15700	2	2	2	2	2
6	01755A					Clapper Hex Jam Nut #10-24 UNC	Stainless Steel UNS-S30400	1	0	0	0	0
		08159	08159			Clapper Hex Jam Nut 3/8"-24 UNF	Stainless Steel UNS-S30400	0	1	1	0	0
				08144	08144	Clapper Hex Jam Nut 1/2"-20 UNC	Stainless Steel UNS-S30400	0	0	0	1	1
7	06595A	08158	08158	08143	08143	Sealing Washer	EPDM and Stainless Steel	1	1	1	1	1
8	*	*	*	*	*	Clapper	Teflon® Coated HR Steel UNS-G10180	1	1	1	1	1
9	*	*	*	*	*	Clapper Rubber	EPDM, ASTM D2000	1	1	1	1	1
10	*	*	*	*	*	Clapper Rubber Retainer	Stainless Steel UNS-S30400	1	1	1	1	1
11	06595A					H.H.C. Screw #10-24 UNC x 1/2" (12.7 mm) lg.	Stainless Steel UNS-S30400	1	0	0	0	0
		10194	10194			Screw, Button Head, Socket, 3/8" - 24 UNF x 1/2" (12.7 mm) lg.	Stainless Steel UNS-S30400	0	1	1	0	0
				10308		Screw, Button Head, Socket, 1/2" - 20 UNF x 3/4" (19.1 mm) lg.	Stainless Steel UNS-S30400	0	0	0	1	1
					10686	Screw, Button Head, Socket, 1/2" - 20 UNF x 7/8" (22.2 mm) lg.	Stainless Steel UNS-S30400	0	0	0	0	1
12	--	--	--	--	--	Seat	Brass UNS-C84400	1	1	1	1	1
13	05354B	05354B	04649B	04992B	05339C	Cover Gasket	EPDM, ASTM D2000	1	1	1	1	1
	01517A	01517A	01517A			H.H.C. Screw 3/8"-16 UNC x 3/4" (19.1 mm) lg.	Steel, Zinc Plated	4	4	6	0	0
				04993A		H.H.C. Screw 1/2"-13 UNC x 7/8" (22.2 mm) lg.	Steel, Zinc Plated	0	0	0	6	0
14					01922A	H.H.C. Screw 5/8"-11 UNC x 1-1/4" (31.8 mm) lg.	Steel, Zinc Plated	0	0	0	0	6
	--	--	--	--	--	1/2" (15 mm) NPT Pipe Plug	Steel	2	2	2	0	0
15	--	--	--	--	--	3/4" (20 mm) NPT Pipe Plug	Steel	0	0	0	2	2

-- Indicates replacement part is not available

* Indicates replacement part only available in a Sub-Assembly listed below.

Sub-Assemblies

3, 6-11	05499B	08518	08519	08520	08521	Clapper Assembly
9 & 10	--	14864	14865	14866	--	Replacement Clapper Rubber Kit*