



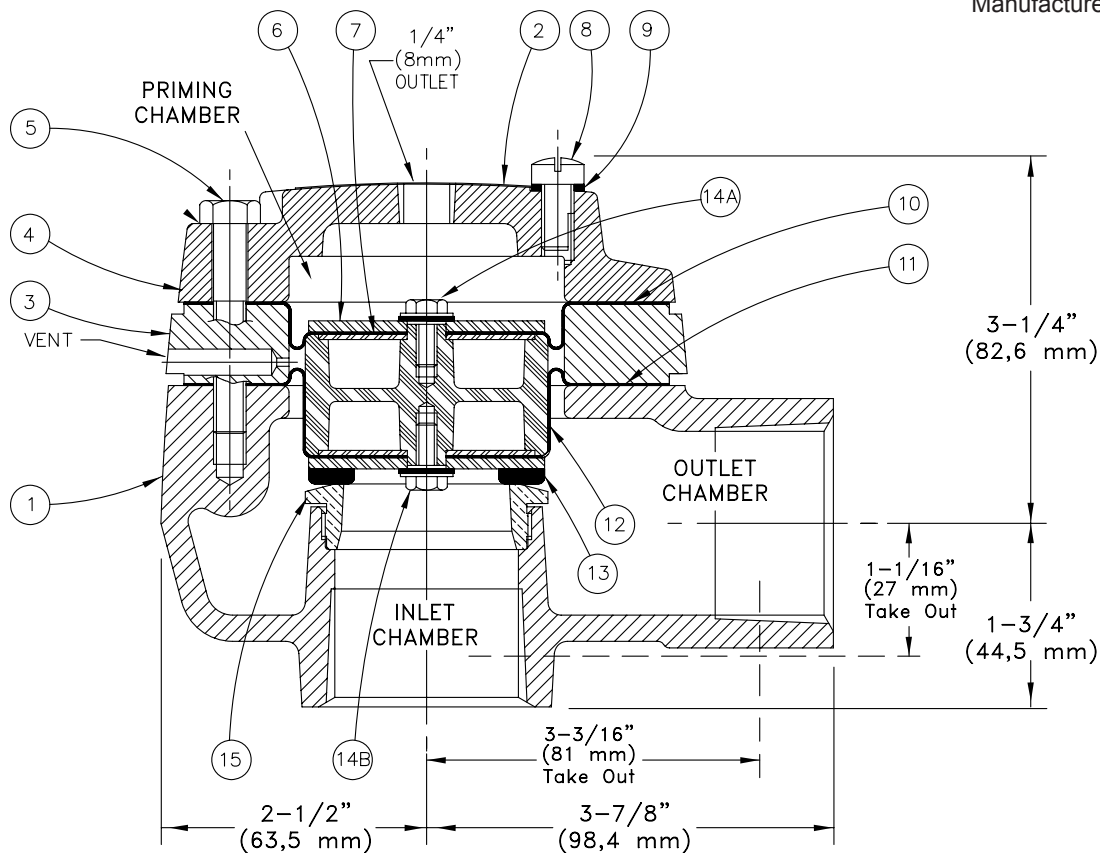
REPLACEMENT PARTS

DELUGE VALVE

MODEL E-1

1-1/2" (DN40)

Manufactured 1984 - 1997



| ITEM NO. | PART NUMBER | DESCRIPTION | MATERIAL | NO. REQ'D |
|----------|-------------|-----------------------------------|---|-----------|
| 1 | -- | Body | Ductile Iron 60-40-18 | 1 |
| 2 | -- | Cover Label | Aluminum | 1 |
| 3 | -- | Spacer | Ductile Iron 65-45-12 | 1 |
| 4 | -- | Cover | Ductile Iron 60-40-18 | 1 |
| 5 | 04838A | Screw, H.H.C., 5/16 -18 x 2" Lg. | Steel | 4 |
| 6 | 04211A | Clamp Plate | Stainless Steel UNS-S30400, 12 gauge | 1 |
| 7 | 04692A | End Plate | Stainless Steel UNS-S30400, 18 gauge | 2 |
| 8 | 03914A | Vent Screw | Brass | 1 |
| 9 | 03915A | Vent Screw Washer | Polypropylene | 1 |
| 10 | -- | Upper Diaphragm | Polyester Fabric and EPDM Elastomer | 1 |
| 11 | -- | Lower Diaphragm | Polyester Fabric and EPDM Elastomer | 1 |
| 12 | 04547B | Piston | Polycarbonate RTP 301 | 1 |
| 13 | 04928A | Clapper Assembly | Stainless Steel UNS-S30400, 12 gauge & EPDM | 1 |
| 14A & B | 06595A | Screw and Sealing Washer Assembly | Stainless Steel / Neoprene UNS-S30400 | 2 |
| 15 | -- | Seat | Brass UNS-C84400 | 1 |

--Indicates replacement part not available