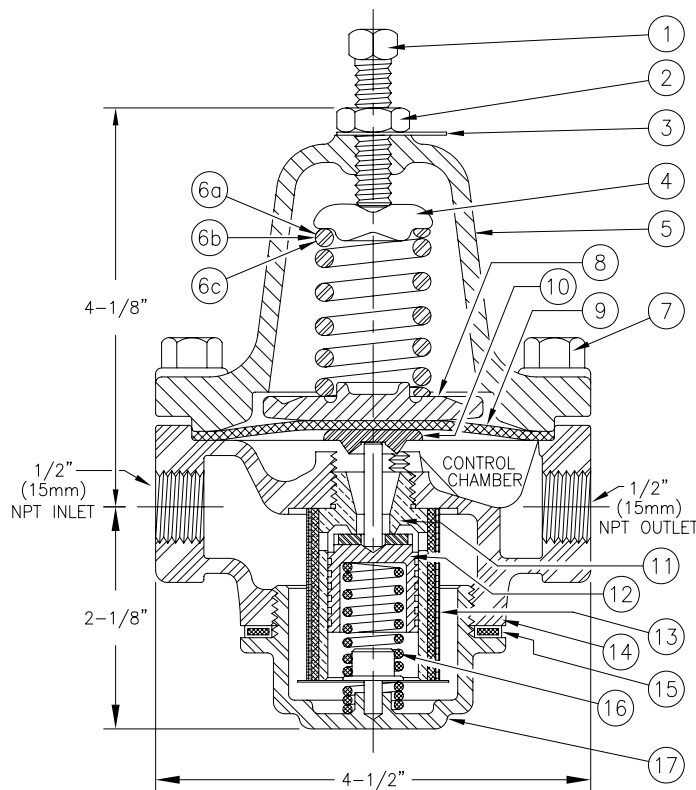




REPLACEMENT PARTS

PILOT PRESSURE REGULATING VALVE MODEL C-1 & C-2

Manufactured
C-1 1985 - 1999
C-2 2000 -



ITEM NO.	PART NUMBER	DESCRIPTION	MATERIAL	NO. REQ'D
1	--	Pressure Screw	Steel	1
2	--	Lock Nut	Steel	1
3	--	Identification Tag	Aluminum	1
4	--	Spring Button	Iron	1
5	--	Spring Chamber/Cover	Bronze	1
6a	09198	10-50 PSIG Pressure Spring	Steel	1
6b	09199	30-125 PSIG Pressure Spring	Steel	1
6c	09200	50-150 PSIG Pressure Spring	Steel	1
7	--	Assembly Bolts with Nuts	Steel	6
8	--	Pressure Plate	Cast Iron	1
9	*	Diaphragm	Buna-N Nylon	1
10	--	Pusher Post Button	Y-Brass	1
11	*	Cylinder/Seat	Naval Brass	1
12	*	Piston Assembly (Piston, Pusher Post, Composition Seat)	Y-Brass, Buna-N	1
13	*	Strainer Screen	Stainless Steel	1
14	--	Body	Bronze	1
15	*	Bottom Plug Gasket	Copper Covered	1
16	*	Piston Spring	302 Stainless Steel	1
17	--	Bottom Plug Assembly (Bottom Plug, Screen Washer, Screen Washer Spring, Piston Spring Support)	R-Brass, Y-Brass, 302 Stainless Steel	1

--Indicates replacement part not available

*Indicates replacement part only available in Sub-Assembly listed below.

SUB-ASSEMBLY

9, 11-13, 15, 16	12608	Pressure Regulating Pilot Valve Repair Kit		
------------------	-------	--	--	--

C-1 & C-2 parts are interchangeable.