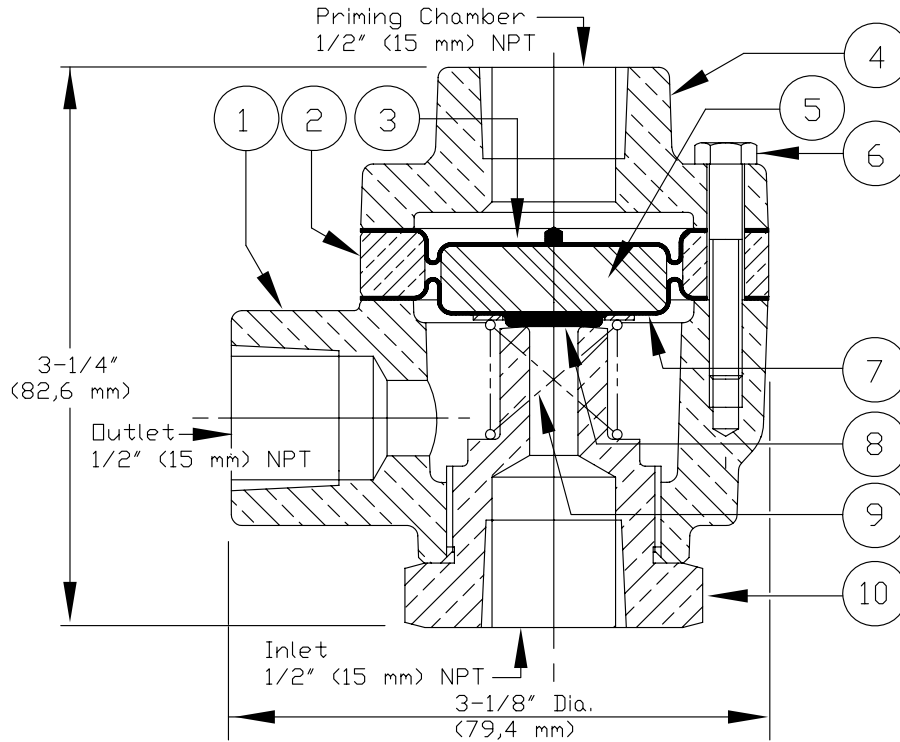




REPLACEMENT PARTS

**PNEUMATIC ACTUATOR
MODEL H-1 & R-1**

Manufactured
H-1 1986 -
R-1 1996 -



ITEM NO.	PART NUMBER		DESCRIPTION	MATERIAL		NO. REQ'D
	H-1	R-1		H-1	R-1	
1	--	--	Body	Brass UNS-C84400	Brass ¹ UNS-C84400	1
2	--	--	Spacer	Brass UNS-C84400	Brass ¹ UNS-C84400	1
3	04735A	04735A	Upper Diaphragm	EPDM/Polyester Fabric	EPDM/Polyester Fabric	1
4	--	--	Cover	Brass UNS-C84400	Brass ¹ UNS-C84400	1
5	04736A	04736A	Piston	Polycarbonate	Polycarbonate	1
6	12470	12471	Hex Head Screw, #10-24 x 1-1/4" lg.	Steel Zinc Coated	#K - 500 Monel	3
7	04861A	04861A	Lower Diaphragm	EPDM/Polyester Fabric	EPDM/Polyester Fabric	1
8	04739A	06227A	Spring Pad	Stainless Steel UNS-S30200/ UNS-S30400	Monel #400	1
9	04741A	06224A	Spring	Stainless Steel UNS-S30200	Inconel #600	1
10	06464B	06464BJ	Seat	Brass UNS-C36000	Brass ² UNS-C36000	1
¹ Electroless Nickel plated, Model R-1 only						
² Nickel and Tin plated, Model R-1 only						
--Indicates replacement part not available.						
SUB-ASSEMBLY						
3, 5-9	12609	12610	Maintenance Kit			