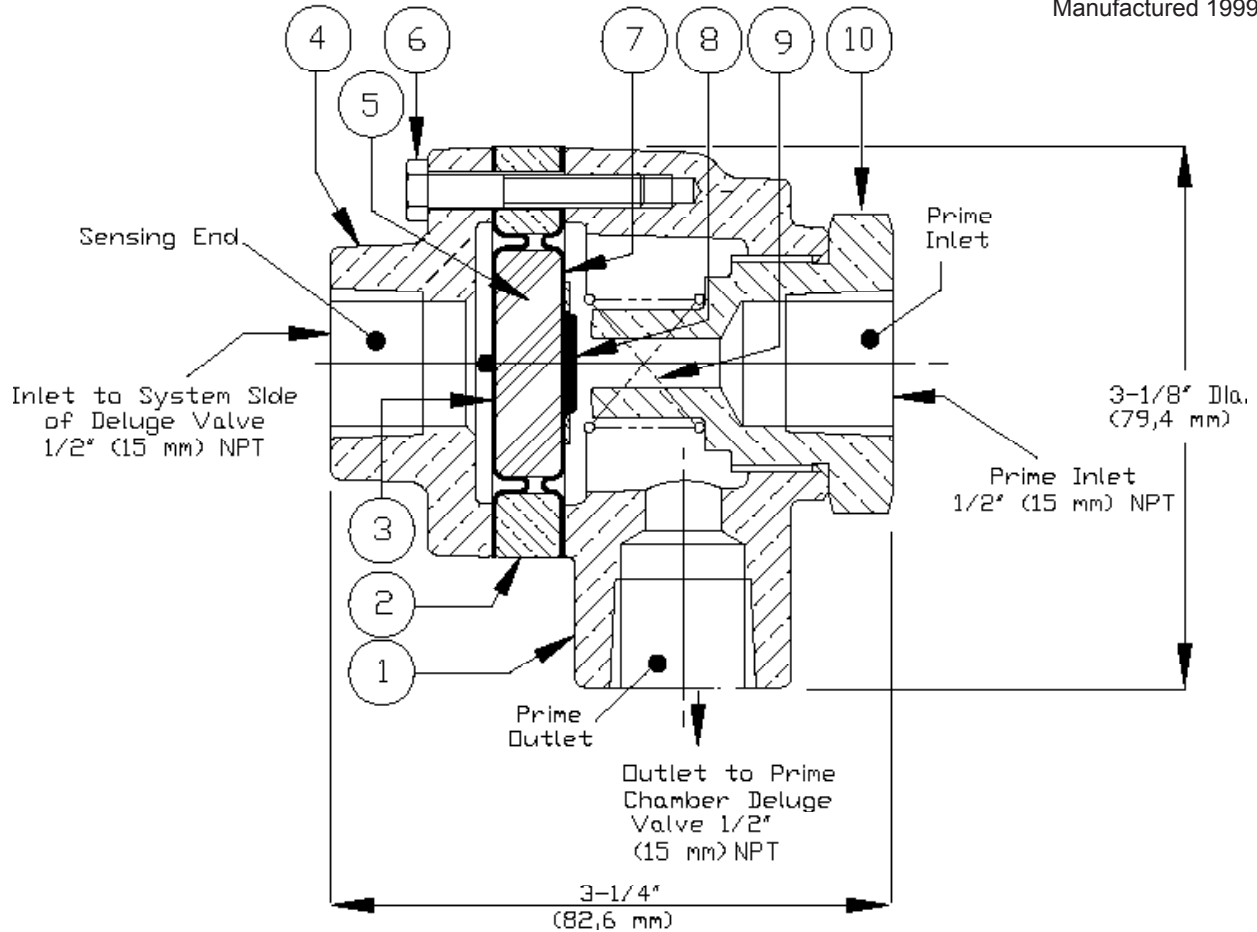




REPLACEMENT PARTS

**PRIME SHUT-OFF VALVE
(PSOV)
MODEL A-1 & A-2**

Manufactured 1999 - 2006



ITEM NO.	PART NUMBER		DESCRIPTION	MATERIAL		NO. REQ'D
	A-1	A-2		MODEL A-1	MODEL A-2	
1	--	--	Body	Brass, UNS-C84400	Brass ¹ , UNS-C84400	1
2	--	--	Spacer	Brass, UNS-C84400	Brass ¹ , UNS-C84400	1
3	04735A	04735A	Upper Diaphragm	EPDM/Polyester Fabric	EPDM/Polyester Fabric	1
4	--	--	Cover	Brass, UNS-C84400	Brass ¹ , UNS-C84400	1
5	04736A	04736A	Piston	Polycarbonate	Polycarbonate	1
6	12470	12471	Hex Head Screw, #10-24 x 1-1/4" Lg.	Steel, Zinc Coated	Monel #K-500	3
7	04861A	04861A	Lower Diaphragm	EPDM/Polyester Fabric	EPDM/Polyester Fabric	1
8	04739A	06227A	Spring Pad	Stainless Steel UNS-S30200/UNS-S30400	Monel #400	1
9	04741A	06224A	Spring	Stainless Steel UNS-S30200	Inconel #600	1
10	06464B	06464BJ	Seat	Brass, UNS-C36000	Brass ² , UNS-C36000	1

¹ Electroless Nickel plated, Model A-2 only, Specification No. SPF02-J01.

² Electroless Nickel and tin plated, Model A-2 only, Specification No. SPF-02-J07.

-- Indicates replacement part not available.

SUB-ASSEMBLY

3, 5-9	12612	12613	Repair Kit
--------	-------	-------	------------