



TECHNICAL DATA

InstaSeal® WELDED SPRINKLER FITTINGS MODEL IS-W2 3/4"

The Viking Corporation, 5150 Beltway Dr. SE Caledonia, MI 49316

Telephone: 269-945-9501 Technical Services: 877-384-5464 Fax: 269-818-1680 Email: techsvcs@vikingcorp.com

Visit the Viking website for the latest edition of this technical data page www.vikinggroupinc.com

1. DESCRIPTION

The Viking InstaSeal® welded sprinkler fittings are designed to allow hand-tightening of threaded sprinklers. The gasket seals the connection upon sprinkler installation and eliminates the need for additional sealants (PTFE tape or thread sealant) typically used for sprinkler installation.

2. LISTINGS AND APPROVALS



cULus Listed: EX28508



FM Approved: Class 1920

3. TECHNICAL DATA

Available since 2023

Materials of Construction:

Fitting: ASTM A106

Gasket: EPDM Rubber

Alignment tool: Nylon reinforced plastic

Cap: LDPE

Pressure rating: 175 psi (12 bar)



WARNING: Cancer and Reproductive Harm-
www.P65Warnings.ca.gov

Ordering Information

Viking InstaSeal® fittings are pre-fabricated and welded onto the pipe. Please contact Viking SupplyNet for more information. These are custom order products and can not be returned or refunded.

Ordering Information	
Available sizes (Outlet size x pipe size)	3/4" NPT x 2" — 2.5" 3/4" NPT x 2.5" — 3"
Pipe	Schedule 10, 30, 40, Bull Moose Eddy Flow, Wheatland MegaFlow, and Wheatland MegaFlow GF
Accessories	
Gasket and tool kit	26596 Refer to Figure 2. Kit Contents: <ul style="list-style-type: none"> • 1 Gasket removal tool • 1 Push-rod (used for installing gaskets) • 1 Nozzle (used for installing gaskets) • 6 Gaskets, 3/4"
3/4" Replacement gaskets	25711M/W *** This part number is for quantity 1 gasket. Specify the desired quantity when ordering. ***
Alignment tool	24838 For use with 3/4" and 1" sprinklers, refer to Figure 2. Fits ONLY ESFR sprinklers. *** Not included with kit 26596.***



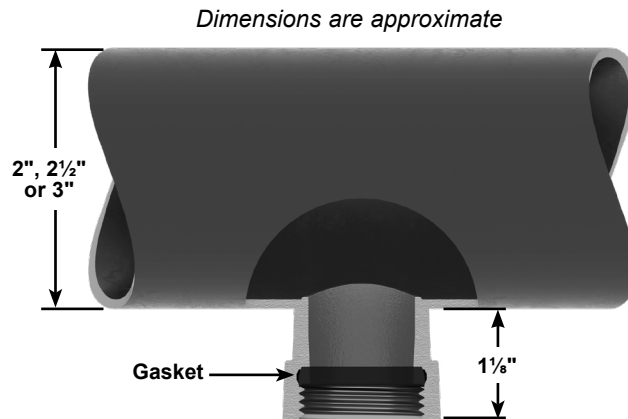
TECHNICAL DATA

**InstaSeal®
WELDED SPRINKLER FITTINGS
MODEL IS-W2 3/4"**

The Viking Corporation, 5150 Beltway Dr. SE Caledonia, MI 49316
 Telephone: 269-945-9501 Technical Services: 877-384-5464 Fax: 269-818-1680 Email: techsvcs@vikingcorp.com
 Visit the Viking website for the latest edition of this technical data page www.vikinggroupinc.com



MARKINGS	
Model	VK IS-W2
Date of manufacture	[mm/yyyy]
Outlet size X pipe size range	3/4" X 2" - 2.5" 3/4" X 2.5" - 3"
Maximum pressure rating	175 PSI (12 BAR)



NOTICE:
 Install ONLY 3/4" NPT threaded sprinklers directly into the fitting.

Figure 1: Markings and Dimensions



TECHNICAL DATA

**InstaSeal®
WELDED SPRINKLER FITTINGS
MODEL IS-W2 3/4"**

The Viking Corporation, 5150 Beltway Dr. SE Caledonia, MI 49316
Telephone: 269-945-9501 Technical Services: 877-384-5464 Fax: 269-818-1680 Email: techsvcs@vikingcorp.com
Visit the Viking website for the latest edition of this technical data page www.vikinggroupinc.com

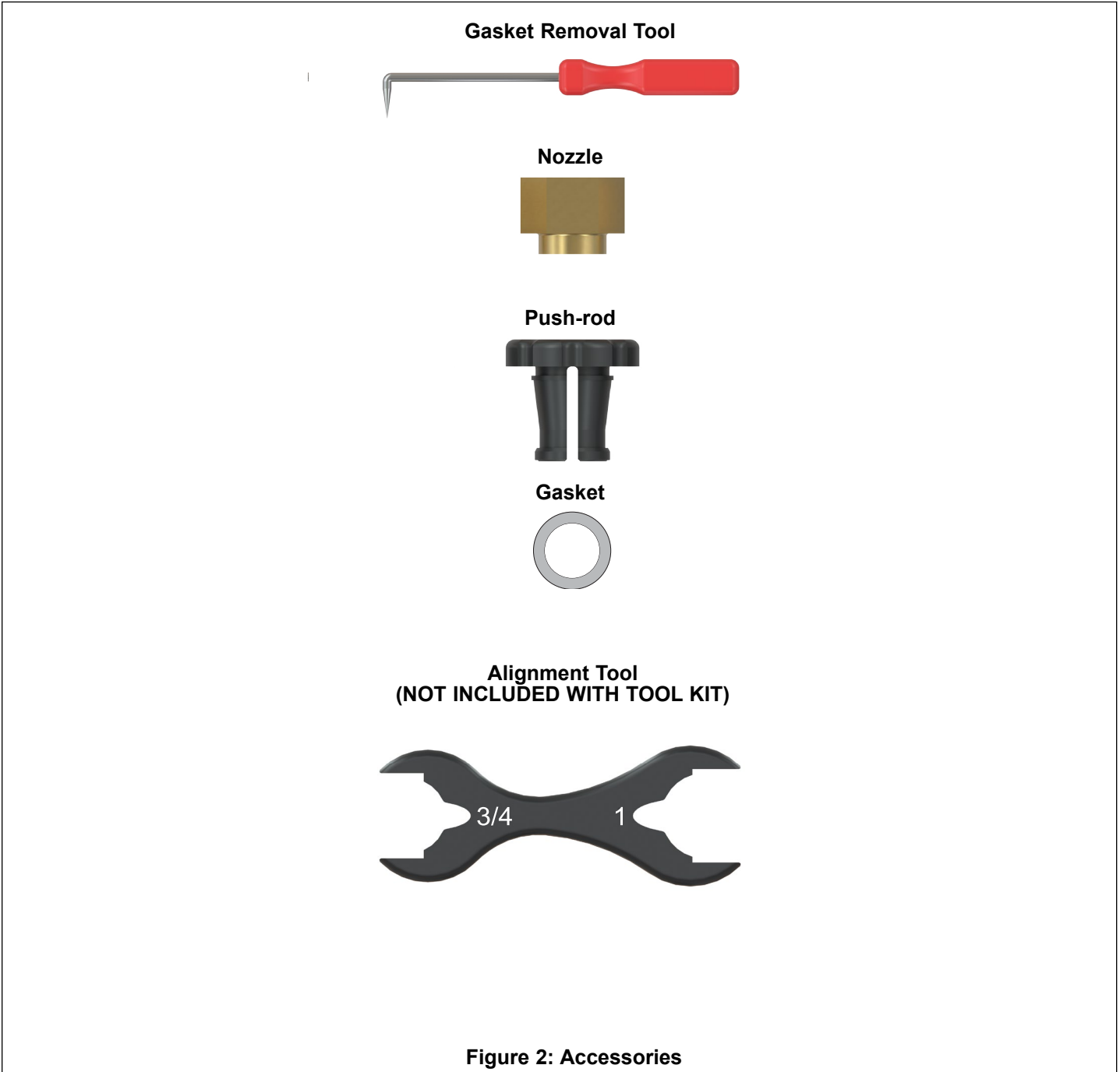


Figure 2: Accessories



TECHNICAL DATA

InstaSeal®
WELDED SPRINKLER FITTINGS
MODEL IS-W2 3/4"

The Viking Corporation, 5150 Beltway Dr. SE Caledonia, MI 49316

Telephone: 269-945-9501 Technical Services: 877-384-5464 Fax: 269-818-1680 Email: techsvcs@vikingcorp.com

Visit the Viking website for the latest edition of this technical data page www.vikinggroupinc.com

4. INSTALLATION

Refer to appropriate NFPA, FM Global, and/or any other applicable installation standards. Also refer to the sprinkler's technical data sheet for information regarding installation of the sprinkler.

NOTICE

Over-tightening the sprinkler will deform the gasket and cause leaks.

- Do not tighten the sprinkler more than 360 degrees from initial gasket contact.
- Install the sprinkler by hand or by using the InstaSeal® alignment tool.
- **DO NOT USE THE SPRINKLER'S STANDARD METAL INSTALLATION WRENCH.**
- Do not exceed the maximum torque specified for the sprinkler. Refer to the sprinkler's technical data.

Seating the Sprinkler

1. Remove the integrity protective cap from the IS-W2 fitting.

NOTE: DO NOT COMPRESS THE GASKET DURING THE FOLLOWING STEPS.

2. Slowly and gently thread the sprinkler into the fitting by hand until you feel resistance (indicates gasket contact).
3. Take note of the position of the sprinkler's frame arms before proceeding.

Compressing the Gasket

4. Tighten the sprinkler 180 degrees (1/2 turn) for gasket seal. **Minimum recommended torque: approximately 3 ft-lbs.**

Note: The alignment tool may be used to achieve gasket sealing.

5. If desired, the sprinkler may be tightened up to an additional 180 degrees (1/2 turn) in order to align the sprinkler frame arms parallel with the pipe. **Maximum recommended torque: approximately 8 ft-lbs.**
6. Remove the sprinkler's protective cap before placing the system in service.

**NOTICE: DO NOT USE THE SPRINKLER'S STANDARD METAL INSTALLATION WRENCH!
INSTALL THE SPRINKLER BY HAND OR USE THE PLASTIC InstaSeal® ALIGNMENT TOOL ONLY!**

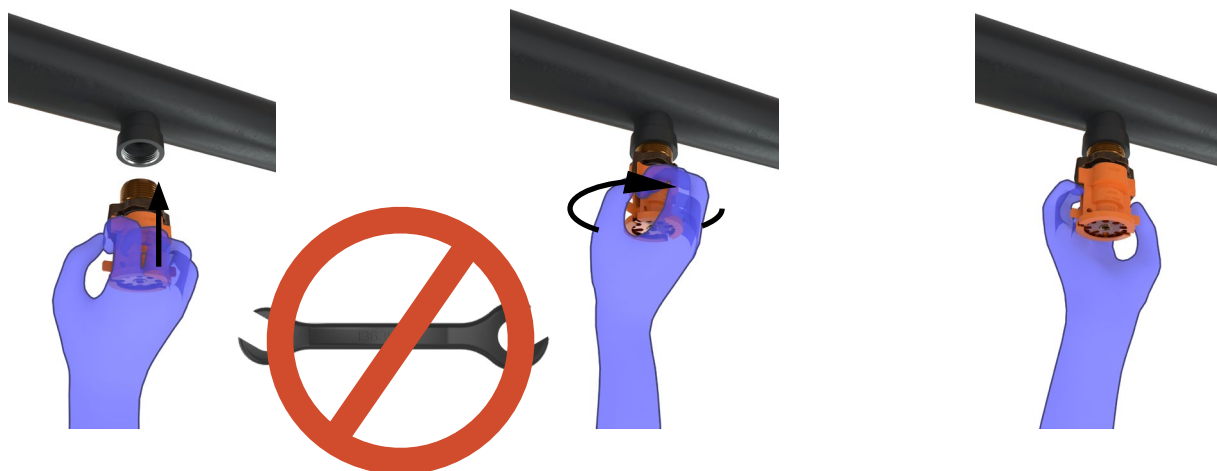


Figure 3: Sprinkler Installation



TECHNICAL DATA

InstaSeal®
WELDED SPRINKLER FITTINGS
MODEL IS-W2 3/4"

The Viking Corporation, 5150 Beltway Dr. SE Caledonia, MI 49316

Telephone: 269-945-9501 Technical Services: 877-384-5464 Fax: 269-818-1680 Email: techsvcs@vikingcorp.com

Visit the Viking website for the latest edition of this technical data page www.vikinggroupinc.com

5. GUARANTEE

For details of warranty, refer to Viking's current list price schedule or contact Viking directly.

6. INSPECTIONS, TESTING, AND MAINTENANCE

NOTICE

The owner is responsible for maintaining the fire protection system and devices in proper operating condition. For minimum maintenance and inspection requirements, refer to NFPA 25 for Inspection, Testing and Maintenance requirements. In addition, the Authority Having Jurisdiction may have additional maintenance requirements that must be followed.

Inspections

The InstaSeal® fittings should be inspected and the gasket replaced any time a sprinkler is removed.

Testing

Refer to NFPA 25 for Inspection, Testing and Maintenance requirements.

Maintenance

The gasket must be replaced whenever a sprinkler is removed.

Replacing the Gasket (see Figures 2 and 4)

1. Verify that the system has been removed from service. Refer to the system's documentation.
2. Remove the sprinkler.
3. Remove the old gasket using the pick tool.
4. Discard the old gasket.
5. Place new gasket (a) into the nozzle (b) with the white colored surface facing out and the chamfered edge going in first (the surface is colored to properly orient the gasket within the nozzle) then place the nozzle into the outlet (c) as shown.
6. Line up the insertion tool on the gasket surface ensuring the contact is uniform.
7. Press straight on the insertion tool (d) until it contacts the mechanical stop fully seating the nozzle onto the welded fitting.
8. Remove the tool and install a new sprinkler.

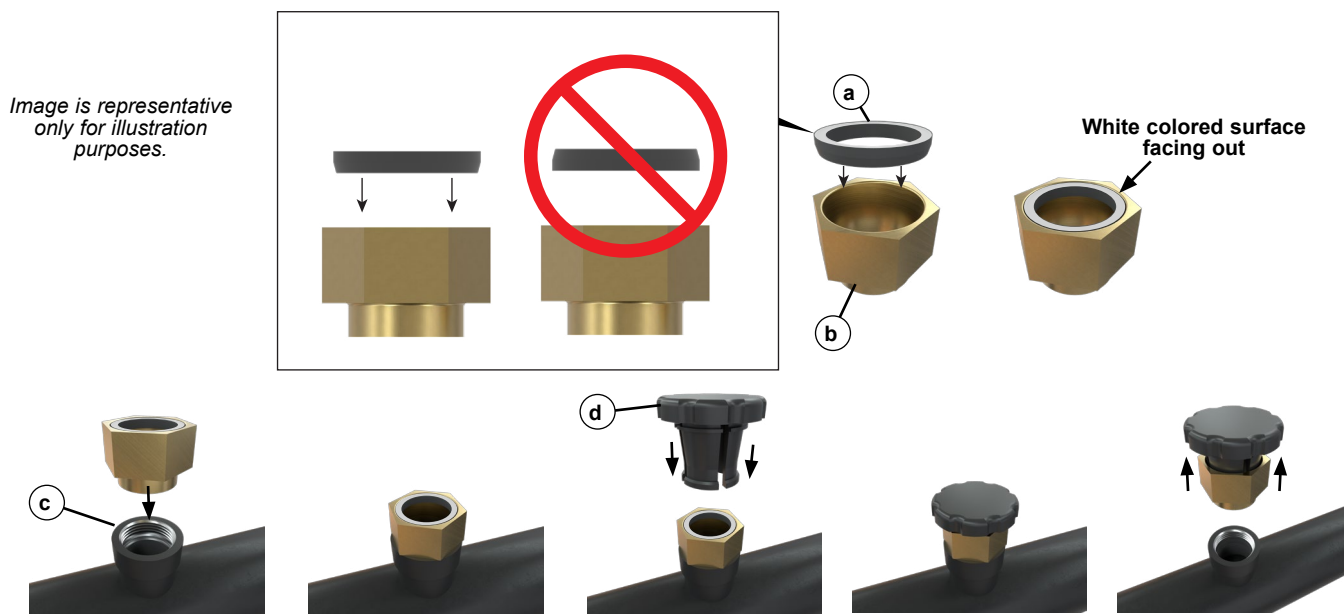


Figure 4: New Gasket Installation



TECHNICAL DATA

InstaSeal®
 WELDED SPRINKLER FITTINGS
 MODEL IS-W2 3/4"

The Viking Corporation, 5150 Beltway Dr. SE Caledonia, MI 49316

Telephone: 269-945-9501 Technical Services: 877-384-5464 Fax: 269-818-1680 Email: techsvcs@vikingcorp.com

Visit the Viking website for the latest edition of this technical data page www.vikinggroupinc.com

6.1 Repairing a Fitting with a Leak at the Weld

⚠ WARNING

Any system maintenance that involves placing a control valve or detection system out of service may eliminate the fire protection capabilities of that system. Prior to proceeding, notify all Authorities Having Jurisdiction. Consideration should be given to employment of a fire patrol in the affected areas.

If a leak develops at the weld, follow the procedure below to repair the fitting.

1. Verify that the system has been removed from service. Refer to the system's documentation.
2. Remove the sprinkler from the fitting according to the manufacturer's instructions.
3. Refer to Figure 2. Remove the gasket from the fitting using the gasket removal tool (or comparable tool).
4. Discard the old gasket.
5. Perform any necessary repairs.
6. Refer to Figure 5. Place new gasket (a) into the nozzle (b) with the white colored surface facing out and the chamfered edge going in first (the surface is colored to properly orient the gasket within the nozzle) then place the nozzle into the outlet (c) as shown.

IMPORTANT: The gasket MUST BE NEW.

7. Line up the insertion tool on the gasket surface ensuring the contact is uniform.
8. Press straight on the insertion tool (d) until it contacts the mechanical stop fully seating the nozzle onto the welded fitting.
9. Remove the tool and install a new sprinkler. Refer to section 4 in this document for applicable installation procedure.