



Section B - Sprinklers
Standard Coverage, Quick Response

TABLE OF CONTENTS

Pendent/Upright (glass bulb)	VK325/VK329, 2.8 (40) K factor, upright / pendentB-1 VK327/VK331, 4.2 (60) K factor, upright / pendentB-2 VK300/VK302, 5.6 (81) K factor, upright / pendentB-3 VK3001/VK3021, XT1, 5.6 (81) K factor, upright / pendent.....B-4 VK350/VK352, 8.0 (115) K factor, upright / pendent (3/4" NPT)B-5 VK3501/VK3521, 8.0 (115) K factor, upright / pendent (3/4" NPT).....B-6 VK350/VK352, 8.0 (115) K factor, upright / pendent (1/2" NPT) - REPLACEMENTB-7 VK3502/VK3522, XT1, 8.0 (115) K factor, upright/pendent (1/2" NPT) REPLACEMENT....B-8
Conventional	VK310/VK354, 5.6 (81) / 8.0 (115) K factor, conventionalB-9 VK3101/VK3541, XT1, 5.6 (81) / 8.0 (115) K factor, conventionalB-10
Sidewall	VK333, 2.8 (40) K factor, horizontal sidewall.....B-11 VK306, 5.6 (81) K factor, vertical sidewallB-11 VK305, 5.6 (81) K factor, horizontal sidewallB-12 VK360, 8.0 (115) K factor, horizontal sidewallB-12
Concealed	Mirage® VK4611/VK4651, 2.8 (40) / 4.2 (60) K factor, flat concealed pendentB-13 Mirage® VK4621/VK464, 5.6 (81) / 8.0 (115) K factor, flat concealed pendentB-13 Mirage® VK463, 5.6 (81) K factor, <u>high pressure</u> , flat concealed pendent.....B-13 Mirage® VK469, 11.2 (161) K factor, ELO, flat concealed pendentB-13 Mirage® cover plates (standard, large, square, ELO, clean room)B-14 Mirage® wrenches and cover plate installation toolsB-15 VK481, 5.6 (81) K factor, flat concealed horizontal sidewall and cover plateB-16 VK402 / VK478 5.6 (81) K factor, flush pendent.....B-16 Mirage® MRI room concealed sprinklers (VK462/VK464)B-16
Fusible Link	Fusible Link, upright / pendentB-17 Fusible Link, horizontal sidewall / vertical sidewall / conventional.....B-18 Fusible Link, high pressureB-19
High Pressure	VK340/VK342, high pressure, 2.8 (40) K factor, upright / pendent, HPB-20 VK315/VK317, high pressure, 5.6 (81) K factor, upright / pendent, HPB-21 VK344/VK319, high pressure, 2.8 (40) / 5.6 (81) K factor, horizontal sidewall, HPB-22 VK3001/VK3021, XT1, high pressure, 5.6 (81) K factor, upright / pendent,.....B-23
Stainless Steel	VK338/VK339, stainless steel, 5.6 (81) K factor, upright / pendent.....B-24

Notes

1. Unless otherwise indicated, all cover plates and escutcheons are sold separately.
2. Cover plates, escutcheons, and sprinklers are available in custom colors at an additional charge. See pages F-8 for details.
3. Refer to Viking technical data pages for complete product specifications (www.vikinggroupinc.com).
4. List prices effective July 9, 2022. Supersedes February 2022 list price book.
5. All sales by Viking are subject to the Terms & Conditions found on the last page of this book.



Microfast® Model M
Quick Response
Standard Coverage
Glass Bulb
Upright

SIN: VK325
K Factor: 2.8 (40)
Thread Size: 1/2 inch NPT
Base Part #: 20982



Microfast® Model M
Quick Response
Standard Coverage
Glass Bulb
Pendent

SIN: VK329
K Factor: 2.8 (40)
Thread Size: 1/2 inch NPT
Base Part #: 20984

Finish ²	Temp	Part #	IPG	List Price
Standard Brass	155°F	20982AB	V120	\$79.34
Standard Brass	175°F	20982AD	V120	\$79.34
Standard Brass	200°F	20982AE	V120	\$79.34
Standard Brass	286°F	20982AG	V120	\$79.34
Chrome	155°F	20982FB	V120	\$85.02
Chrome	175°F	20982FD	V120	\$85.02
Chrome	200°F	20982FE	V120	\$85.02
Chrome	286°F	20982FG	V120	\$85.02
White-Polyester ¹	155°F	20982MB/W	V120	\$85.02
White-Polyester	175°F	20982MD/W	V120	\$85.02
White-Polyester	200°F	20982ME/W	V120	\$85.02
White-Polyester	286°F	20982MG/W	V120	\$85.02
Black-Polyester ¹	155°F	20982MB/B	V120	\$121.40
Black-Polyester	175°F	20982MD/B	V120	\$121.40
Black-Polyester	200°F	20982ME/B	V120	\$121.40
Black-Polyester	286°F	20982MG/B	V120	\$121.40
Std Sprinkler Wrench		21475M/B	V207	\$103.93

Finish ²	Temp	Part #	IPG	List Price
Standard Brass	155°F	20984AB	V120	\$79.34
Standard Brass	175°F	20984AD	V120	\$79.34
Standard Brass	200°F	20984AE	V120	\$79.34
Standard Brass	286°F	20984AG	V120	\$79.34
Chrome	155°F	20984FB	V120	\$85.02
Chrome	175°F	20984FD	V120	\$85.02
Chrome	200°F	20984FE	V120	\$85.02
Chrome	286°F	20984FG	V120	\$85.02
White-Polyester ¹	155°F	20984MB/W	V120	\$85.02
White-Polyester	175°F	20984MD/W	V120	\$85.02
White-Polyester	200°F	20984ME/W	V120	\$85.02
White-Polyester	286°F	20984MG/W	V120	\$85.02
Black-Polyester ¹	155°F	20984MB/B	V120	\$121.40
Black-Polyester	175°F	20984MD/B	V120	\$121.40
Black-Polyester	200°F	20984ME/B	V120	\$121.40
Black-Polyester	286°F	20984MG/B	V120	\$121.40
Std Sprinkler Wrench		21475M/B	V207	\$103.93
Wrench for Rcsd w/Caps		13655W/B	V207	\$200.28

Select Escutcheons - Recessed Pendant Sprinklers*



Recessed Escutcheon
Model E-1 (push-on)
(includes cup & adapter)
(OD = 3-1/16" / 78 mm)

Finish ²	Size	Part #	IPG	List Price
Bright Brass	1/2"	06419AB	V201	\$51.83
Polished Chrome	1/2"	06419AF	V200	\$10.77
White	1/2"	06419AM/W	V200	\$10.77
Black	1/2"	06419AM/B	V201	\$22.66



Threaded Escutcheon
Model E-2 (thread-on)
(includes cup & adapter)
(OD = 3-1/8" / 80 mm)

Polished Chrome	1/2"	11038F	V200	\$10.81
White	1/2"	11038M/W	V200	\$10.81

*Refer to Page H-1 for complete list of available escutcheons

- (1) Suitable for decorative applications; UL listed for corrosion resistance.
- (2) Also available with ENT (Electroless Nickel PTFE) plating for corrosion resistance (special order with extended lead time).
Contact customer service for price and availability. Special order ENT plated sprinklers may not have listings/approvals.



Microfast® Model M
Quick Response
Standard Coverage
Glass Bulb
Upright

SIN:	VK327
K Factor:	4.2 (60)
Thread Size:	1/2 inch NPT
Base Part #:	21269



Microfast® Model M
Quick Response
Standard Coverage
Glass Bulb
Pendent

SIN:	VK331
K Factor:	4.2 (60)
Thread Size:	1/2 inch NPT
Base Part #:	21271

Finish ²	Temp	Part #	IPG	List Price
Standard Brass	155°F	21269AB	V120	\$76.46
Standard Brass	175°F	21269AD	V120	\$76.46
Standard Brass	200°F	21269AE	V120	\$76.46
Standard Brass	286°F	21269AG	V120	\$76.46
Chrome	155°F	21269FB	V120	\$81.94
Chrome	175°F	21269FD	V120	\$81.94
Chrome	200°F	21269FE	V120	\$81.94
Chrome	286°F	21269FG	V120	\$81.94
White-Polyester ¹	155°F	21269MB/W	V120	\$81.94
White-Polyester	175°F	21269MD/W	V120	\$81.94
White-Polyester	200°F	21269ME/W	V120	\$81.94
White-Polyester	286°F	21269MG/W	V120	\$81.94
Black-Polyester ¹	155°F	21269MB/B	V120	\$121.40
Black-Polyester	175°F	21269MD/B	V120	\$121.40
Black-Polyester	200°F	21269ME/B	V120	\$121.40
Black-Polyester	286°F	21269MG/B	V120	\$121.40
Std Sprinkler Wrench		21475M/B	V207	\$103.93

Finish ²	Temp	Part #	IPG	List Price
Standard Brass	155°F	21271AB	V120	\$76.46
Standard Brass	175°F	21271AD	V120	\$76.46
Standard Brass	200°F	21271AE	V120	\$76.46
Standard Brass	286°F	21271AG	V120	\$76.46
Chrome	155°F	21271FB	V120	\$81.94
Chrome	175°F	21271FD	V120	\$81.94
Chrome	200°F	21271FE	V120	\$81.94
Chrome	286°F	21271FG	V120	\$81.94
White-Polyester ¹	155°F	21271MB/W	V120	\$81.94
White-Polyester	175°F	21271MD/W	V120	\$81.94
White-Polyester	200°F	21271ME/W	V120	\$81.94
White-Polyester	286°F	21271MG/W	V120	\$81.94
Black-Polyester ¹	155°F	21271MB/B	V120	\$121.40
Black-Polyester	175°F	21271MD/B	V120	\$121.40
Black-Polyester	200°F	21271ME/B	V120	\$121.40
Black-Polyester	286°F	21271MG/B	V120	\$121.40
Std Sprinkler Wrench		21475M/B	V207	\$103.93
Wrench for Rcsd w/Caps		13655W/B	V207	\$200.28

Select Escutcheons - Recessed Pendent Sprinklers*



Recessed Escutcheon
Model E-1 (push-on)
(includes cup & adapter)
(OD = 3-1/16" / 78 mm)

Finish ²	Size	Part #	IPG	List Price
Bright Brass	1/2"	06419AB	V201	\$51.83
Polished Chrome	1/2"	06419AF	V200	\$10.77
White	1/2"	06419AM/W	V200	\$10.77
Black	1/2"	06419AM/B	V201	\$22.66



Threaded Escutcheon
Model E-2 (thread-on)
(includes cup & adapter)
(OD = 3-1/8" / 80 mm)

Polished Chrome	1/2"	11038F	V200	\$10.81
White	1/2"	11038M/W	V200	\$10.81

*Refer to Page H-1 for complete list of available escutcheons

(1) Suitable for decorative applications; UL listed for corrosion resistance.
(2) Also available with ENT (Electroless Nickel PTFE) plating for corrosion resistance (special order with extended lead time).
Contact customer service for price and availability. Special order ENT plated sprinklers may not have listings/approvals.



Microfast® Model M
Quick Response
Standard Coverage
Glass Bulb
Upright
SIN: VK300
K Factor: 5.6 (81)
Thread Size: 1/2 inch NPT
Base Part #: 12978



Microfast® Model M
Quick Response
Standard Coverage
Glass Bulb
Pendant
SIN: VK302
K Factor: 5.6 (81)
Thread Size: 1/2 inch NPT
Base Part #: 12979

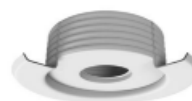
Finish	Temp	Part #	IPG	List Price
Standard Brass	135°F	12978AA	V120.1	\$43.63
Standard Brass	155°F	12978AB	V120.1	\$43.63
Standard Brass	175°F	12978AD	V120.1	\$43.63
Standard Brass	200°F	12978AE	V120.1	\$43.63
Standard Brass	286°F	12978AG	V120.1	\$43.63
Chrome	135°F	12978FA	V120.1	\$58.31
Chrome	155°F	12978FB	V120.1	\$58.31
Chrome	175°F	12978FD	V120.1	\$58.31
Chrome	200°F	12978FE	V120.1	\$58.31
Chrome	286°F	12978FG	V120.1	\$58.31
White-Polyester ¹	135°F	12978MA/W	V120.1	\$58.31
White-Polyester	155°F	12978MB/W	V120.1	\$58.31
White-Polyester	175°F	12978MD/W	V120.1	\$58.31
White-Polyester	200°F	12978ME/W	V120.1	\$58.31
White-Polyester	286°F	12978MG/W	V120.1	\$58.31
Black-Polyester ¹	135°F	12978MA/B	V120.1	\$97.18
Black-Polyester	155°F	12978MB/B	V120.1	\$97.18
Black-Polyester	175°F	12978MD/B	V120.1	\$97.18
Black-Polyester	200°F	12978ME/B	V120.1	\$97.18
Black-Polyester	286°F	12978MG/B	V120.1	\$97.18
Nickel PTFE (ENT) ²	155°F	12978JNB	V188.A	\$101.85
Nickel PTFE (ENT)	175°F	12978JND	V188.A	\$101.85
Nickel PTFE (ENT)	200°F	12978JNE	V188.A	\$101.85
Nickel PTFE (ENT)	286°F	12978JNG	V188.A	\$101.85
Std Sprinkler Wrench		21475M/B	V207	\$103.93

Finish	Temp	Part #	IPG	List Price
Standard Brass	135°F	12979AA	V120.1	\$43.63
Standard Brass	155°F	12979AB	V120.1	\$43.63
Standard Brass	175°F	12979AD	V120.1	\$43.63
Standard Brass	200°F	12979AE	V120.1	\$43.63
Standard Brass	286°F	12979AG	V120.1	\$43.63
Chrome	135°F	12979FA	V120.1	\$46.28
Chrome	155°F	12979FB	V120.1	\$46.28
Chrome	175°F	12979FD	V120.1	\$46.28
Chrome	200°F	12979FE	V120.1	\$46.28
Chrome	286°F	12979FG	V120.1	\$46.28
White-Polyester ¹	135°F	12979MA/W	V120.1	\$46.28
White-Polyester	155°F	12979MB/W	V120.1	\$46.28
White-Polyester	175°F	12979MD/W	V120.1	\$46.28
White-Polyester	200°F	12979ME/W	V120.1	\$46.28
White-Polyester	286°F	12979MG/W	V120.1	\$46.28
Black-Polyester ¹	135°F	12979MA/B	V120.1	\$83.06
Black-Polyester	155°F	12979MB/B	V120.1	\$83.06
Black-Polyester	175°F	12979MD/B	V120.1	\$83.06
Black-Polyester	200°F	12979ME/B	V120.1	\$83.06
Black-Polyester	286°F	12979MG/B	V120.1	\$83.06
Nickel PTFE (ENT) ²	155°F	12979JNB	V188.A	\$101.85
Nickel PTFE (ENT)	175°F	12979JND	V188.A	\$101.85
Nickel PTFE (ENT)	200°F	12979JNE	V188.A	\$101.85
Nickel PTFE (ENT)	286°F	12979JNG	V188.A	\$101.85
Std Sprinkler Wrench		21475M/B	V207	\$103.93
Wrench for Rcsd w/Caps		13655W/B	V207	\$200.28



Recessed Escutcheon
Model E-1 (push-on)
(includes cup & adapter)
(OD = 3-1/16" / 78 mm)

Finish ²	Size	Part #	IPG	List Price
Bright Brass	1/2"	06419AB	V201	\$51.83
Polished Chrome	1/2"	06419AF	V200	\$10.77
White	1/2"	06419AM/W	V200	\$10.77
Black	1/2"	06419AM/B	V201	\$22.66



Threaded Escutcheon
Model E-2 (thread-on)
(includes cup & adapter)
(OD = 3-1/8" / 80 mm)

Polished Chrome	1/2"	11038F	V200	\$10.81
White	1/2"	11038M/W	V200	\$10.81

(1) Suitable for decorative application; UL listed for corrosion resistance.

(2) Electroless Nickel PTFE (ENT) plating is UL Listed and FM Approved for corrosion resistance.



XT1
Quick Response
Standard Coverage
Glass Bulb
Upright



SIN: VK3001
K Factor: 5.6 (81)
Thread Size: 1/2 inch NPT
Base Part #: 23869



XT1
Quick Response
Standard Coverage
Glass Bulb
Pendent



SIN: VK3021
K Factor: 5.6 (81)
Thread Size: 1/2 inch NPT
Base Part #: 23870

Finish	Temp	Part #	IPG	List Price
Standard Brass	135°F	23869AA	V120	\$42.39
Standard Brass	155°F	23869AB	V120	\$42.39
Standard Brass	175°F	23869AD	V120	\$42.39
Standard Brass	200°F	23869AE	V120	\$42.39
Standard Brass	286°F	23869AG	V120	\$42.39
Chrome	135°F	23869FA	V120	\$56.66
Chrome	155°F	23869FB	V120	\$56.66
Chrome	175°F	23869FD	V120	\$56.66
Chrome	200°F	23869FE	V120	\$56.66
Chrome	286°F	23869FG	V120	\$56.66
White-Polyester ¹	135°F	23869MA/W	V120	\$56.66
White-Polyester	155°F	23869MB/W	V120	\$56.66
White-Polyester	175°F	23869MD/W	V120	\$56.66
White-Polyester	200°F	23869ME/W	V120	\$56.66
White-Polyester	286°F	23869MG/W	V120	\$56.66
Black-Polyester ¹	135°F	23869MA/B	V120	\$94.42
Black-Polyester	155°F	23869MB/B	V120	\$94.42
Black-Polyester	175°F	23869MD/B	V120	\$94.42
Black-Polyester	200°F	23869ME/B	V120	\$94.42
Black-Polyester	286°F	23869MG/B	V120	\$94.42
Nickel PTFE (ENT) ²	135°F	23869JNA	V188.A	\$101.85
Nickel PTFE (ENT) ²	155°F	23869JNB	V188.A	\$101.85
Nickel PTFE (ENT)	175°F	23869JND	V188.A	\$101.85
Nickel PTFE (ENT)	200°F	23869JNE	V188.A	\$101.85
Nickel PTFE (ENT)	286°F	23869JNG	V188.A	\$101.85

Finish	Temp	Part #	IPG	List Price
Standard Brass	135°F	23870AA	V120	\$42.39
Standard Brass	155°F	23870AB	V120	\$42.39
Standard Brass	175°F	23870AD	V120	\$42.39
Standard Brass	200°F	23870AE	V120	\$42.39
Standard Brass	286°F	23870AG	V120	\$42.39
Chrome	135°F	23870FA	V120	\$44.96
Chrome	155°F	23870FB	V120	\$44.96
Chrome	175°F	23870FD	V120	\$44.96
Chrome	200°F	23870FE	V120	\$44.96
Chrome	286°F	23870FG	V120	\$44.96
White-Polyester ¹	135°F	23870MA/W	V120	\$44.96
White-Polyester	155°F	23870MB/W	V120	\$44.96
White-Polyester	175°F	23870MD/W	V120	\$44.96
White-Polyester	200°F	23870ME/W	V120	\$44.96
White-Polyester	286°F	23870MG/W	V120	\$44.96
Black-Polyester ¹	135°F	23870MA/B	V120	\$80.70
Black-Polyester	155°F	23870MB/B	V120	\$80.70
Black-Polyester	175°F	23870MD/B	V120	\$80.70
Black-Polyester	200°F	23870ME/B	V120	\$80.70
Black-Polyester	286°F	23870MG/B	V120	\$80.70
Nickel PTFE (ENT) ²	135°F	23870JNA	V188.A	\$101.85
Nickel PTFE (ENT) ²	155°F	23870JNB	V188.A	\$101.85
Nickel PTFE (ENT)	175°F	23870JND	V188.A	\$101.85
Nickel PTFE (ENT)	200°F	23870JNE	V188.A	\$101.85
Nickel PTFE (ENT)	286°F	23870JNG	V188.A	\$101.85

Installation Wrenches			
Wrench - Standard	23559MB	V207	\$103.93
Wrench - Recessed	23560MB	V207	\$200.28

Select Escutcheons - Recessed Pendent Sprinklers*			
NP-1 push-on (chrome, 1/2 in)	22066F	V200	\$10.77
NP-1 push-on (white, 1/2 in)	22066M/W	V200	\$10.77
NP-2 threaded (chrome, 1/2 in)	22067F	V200	\$10.81

*Refer to Page H-1 for complete list of available escutcheons

(1) Suitable for decorative application; UL listed for corrosion resistance.
(2) Electroless Nickel PTFE (ENT) plating is UL Listed and FM Approved for corrosion resistance.



Microfast® Model M
Quick Response
Standard Coverage
Glass Bulb
Upright
SIN: VK350
K Factor: 8.0 (115)
Thread Size: 3/4 inch NPT
Base Part #: 18257



Microfast® Model M
Quick Response
Standard Coverage
Glass Bulb
Pendant
SIN: VK352
K Factor: 8.0 (115)
Thread Size: 3/4 inch NPT
Base Part #: 18258

Finish	Temp	Part #	IPG	List Price
Standard Brass	155°F	18257AB	V131.1	\$60.60
Standard Brass	175°F	18257AD	V131.1	\$60.60
Standard Brass	200°F	18257AE	V131.1	\$60.60
Standard Brass	286°F	18257AG	V131.1	\$60.60
Chrome	155°F	18257FB	V131.1	\$72.25
Chrome	175°F	18257FD	V131.1	\$72.25
Chrome	200°F	18257FE	V131.1	\$72.25
Chrome	286°F	18257FG	V131.1	\$72.25
White-Polyester ¹	155°F	18257MB/W	V131.1	\$72.25
White-Polyester	175°F	18257MD/W	V131.1	\$72.25
White-Polyester	200°F	18257ME/W	V131.1	\$72.25
White-Polyester	286°F	18257MG/W	V131.1	\$72.25
Black-Polyester ¹	155°F	18257MB/B	V131.1	\$97.53
Black-Polyester	175°F	18257MD/B	V131.1	\$97.53
Black-Polyester	200°F	18257ME/B	V131.1	\$97.53
Black-Polyester	286°F	18257MG/B	V131.1	\$97.53
Nickel PTFE (ENT) ²	155°F	18257JNB	V188.A	\$148.91
Nickel PTFE (ENT)	175°F	18257JND	V188.A	\$148.91
Nickel PTFE (ENT)	200°F	18257JNE	V188.A	\$148.91
Nickel PTFE (ENT)	286°F	18257JNG	V188.A	\$148.91
Std Sprinkler Wrench		21475M/B	V207	\$103.93

Finish	Temp	Part #	IPG	List Price
Standard Brass	155°F	18258AB	V131.1	\$70.70
Standard Brass	175°F	18258AD	V131.1	\$70.70
Standard Brass	200°F	18258AE	V131.1	\$70.70
Standard Brass	286°F	18258AG	V131.1	\$70.70
Chrome	155°F	18258FB	V131.1	\$84.29
Chrome	175°F	18258FD	V131.1	\$84.29
Chrome	200°F	18258FE	V131.1	\$84.29
Chrome	286°F	18258FG	V131.1	\$84.29
White-Polyester ¹	155°F	18258MB/W	V131.1	\$84.29
White-Polyester	175°F	18258MD/W	V131.1	\$84.29
White-Polyester	200°F	18258ME/W	V131.1	\$84.29
White-Polyester	286°F	18258MG/W	V131.1	\$84.29
Black-Polyester ¹	155°F	18258MB/B	V131.1	\$113.79
Black-Polyester	175°F	18258MD/B	V131.1	\$113.79
Black-Polyester	200°F	18258ME/B	V131.1	\$113.79
Black-Polyester	286°F	18258MG/B	V131.1	\$113.79
Nickel PTFE (ENT) ²	155°F	18258JNB	V188.A	\$148.91
Nickel PTFE (ENT)	175°F	18258JND	V188.A	\$148.91
Nickel PTFE (ENT)	200°F	18258JNE	V188.A	\$148.91
Nickel PTFE (ENT)	286°F	18258JNG	V188.A	\$148.91
Std Sprinkler Wrench		21475M/B	V207	\$103.93
Wrench for Rcsd w/Caps		13655W/B	V207	\$200.28

Select Escutcheons - Recessed Pendant Sprinklers*



Recessed Escutcheon
Model E-1 (push-on)
(includes cup & adapter)
(OD = 3-1/16" / 78 mm)

Finish	Size	Part #	IPG	List Price
Bright Brass	3/4"	20369B	V201	\$51.83
Polished Chrome	3/4"	20369F	V200	\$10.81
White	3/4"	20369M/W	V200	\$10.81
Black	3/4"	20369M/B	V201	\$22.66



Threaded Escutcheon
Model E-2 (thread-on)
(includes cup & adapter)
(OD = 3-1/8" / 80 mm)

Finish	Size	Part #	IPG	List Price
Polished Chrome	3/4"	20130F	V200	\$10.81
White	3/4"	20130M/W	V200	\$10.81

*Refer to Page H-1 for complete list of available escutcheons

(1) Suitable for decorative applications; UL listed for corrosion resistance.
(2) Electroless Nickel PTFE (ENT) plating is UL Listed and FM Approved for corrosion resistance.



XT1
Quick Response
Standard Coverage
Glass Bulb
Upright

SIN: VK3501
K Factor: 8.0 (115)
Thread Size: 3/4 inch NPT
Base Part #: 23877



XT1
Quick Response
Standard Coverage
Glass Bulb
Pendent

SIN: VK3521
K Factor: 8.0 (115)
Thread Size: 3/4 inch NPT
Base Part #: 23878

Finish	Temp	Part #	IPG	List Price
Standard Brass	135°F	23877AA	V131	\$59.10
Standard Brass	155°F	23877AB	V131	\$59.10
Standard Brass	175°F	23877AD	V131	\$59.10
Standard Brass	200°F	23877AE	V131	\$59.10
Standard Brass	286°F	23877AG	V131	\$59.10
Chrome	135°F	23877FA	V131	\$70.46
Chrome	155°F	23877FB	V131	\$70.46
Chrome	175°F	23877FD	V131	\$70.46
Chrome	200°F	23877FE	V131	\$70.46
Chrome	286°F	23877FG	V131	\$70.46
White-Polyester ¹	135°F	23877MA/W	V131	\$70.46
White-Polyester ¹	155°F	23877MB/W	V131	\$70.46
White-Polyester	175°F	23877MD/W	V131	\$70.46
White-Polyester	200°F	23877ME/W	V131	\$70.46
White-Polyester	286°F	23877MG/W	V131	\$70.46
Black-Polyester ¹	135°F	23877MA/B	V131	\$95.13
Black-Polyester ¹	155°F	23877MB/B	V131	\$95.13
Black-Polyester	175°F	23877MD/B	V131	\$95.13
Black-Polyester	200°F	23877ME/B	V131	\$95.13
Black-Polyester	286°F	23877MG/B	V131	\$95.13
Nickel PTFE (ENT) ²	135°F	23877JNA	V188.A	\$148.91
Nickel PTFE (ENT) ²	155°F	23877JNB	V188.A	\$148.91
Nickel PTFE (ENT)	175°F	23877JND	V188.A	\$148.91
Nickel PTFE (ENT)	200°F	23877JNE	V188.A	\$148.91
Nickel PTFE (ENT)	286°F	23877JNG	V188.A	\$148.91

Finish	Temp	Part #	IPG	List Price
Standard Brass	135°F	23878AA	V131	\$68.95
Standard Brass	155°F	23878AB	V131	\$68.95
Standard Brass	175°F	23878AD	V131	\$68.95
Standard Brass	200°F	23878AE	V131	\$68.95
Standard Brass	286°F	23878AG	V131	\$68.95
Chrome	135°F	23878FA	V131	\$82.21
Chrome	155°F	23878FB	V131	\$82.21
Chrome	175°F	23878FD	V131	\$82.21
Chrome	200°F	23878FE	V131	\$82.21
Chrome	286°F	23878FG	V131	\$82.21
White-Polyester ¹	135°F	23878MA/W	V131	\$82.21
White-Polyester ¹	155°F	23878MB/W	V131	\$82.21
White-Polyester	175°F	23878MD/W	V131	\$82.21
White-Polyester	200°F	23878ME/W	V131	\$82.21
White-Polyester	286°F	23878MG/W	V131	\$82.21
Black-Polyester ¹	135°F	23878MA/B	V131	\$110.99
Black-Polyester ¹	155°F	23878MB/B	V131	\$110.99
Black-Polyester	175°F	23878MD/B	V131	\$110.99
Black-Polyester	200°F	23878ME/B	V131	\$110.99
Black-Polyester	286°F	23878MG/B	V131	\$110.99
Nickel PTFE (ENT) ²	135°F	23878JNA	V188.A	\$148.91
Nickel PTFE (ENT) ²	155°F	23878JNB	V188.A	\$148.91
Nickel PTFE (ENT)	175°F	23878JND	V188.A	\$148.91
Nickel PTFE (ENT)	200°F	23878JNE	V188.A	\$148.91
Nickel PTFE (ENT)	286°F	23878JNG	V188.A	\$148.91

Installation Wrenches			
Wrench - Standard	23559MB	V207	\$103.93
Wrench - Recessed	23560MB	V207	\$200.28

Select Escutcheons - Recessed Pendent Sprinklers*			
NP-1 push-on (chrome, 3/4 in)	22071F	V200	\$10.81
NP-1 push-on (white, 3/4 in)	22071M/W	V200	\$10.81
NP-2 threaded (chrome, 3/4 in)	22072M/W	V200	\$10.81

*Refer to Page H-1 for complete list of available escutcheons

(1) Suitable for decorative applications; UL listed for corrosion resistance.
(2) Electroless Nickel PTFE (ENT) plating is UL Listed and FM Approved for corrosion resistance.



Microfast® Model M
Quick Response
Standard Coverage

REPLACEMENT ONLY²

Glass Bulb
Upright

SIN:	VK350
K Factor:	8.0 (115)
Thread Size:	1/2 inch NPT
Base Part #:	18259



Microfast® Model M
Quick Response
Standard Coverage

REPLACEMENT ONLY²

Glass Bulb
Pendent

SIN:	VK352
K Factor:	8.0 (115)
Thread Size:	1/2 inch NPT
Base Part #:	18260

Finish	Temp	Part #	IPG	List Price
Standard Brass	155°F	18259AB	V130.1	\$83.14
Standard Brass	175°F	18259AD	V130.1	\$83.14
Standard Brass	200°F	18259AE	V130.1	\$83.14
Standard Brass	286°F	18259AG	V130.1	\$83.14
Chrome	155°F	18259FB	V130.1	\$90.59
Chrome	175°F	18259FD	V130.1	\$90.59
Chrome	200°F	18259FE	V130.1	\$90.59
Chrome	286°F	18259FG	V130.1	\$90.59
White-Polyester ¹	155°F	18259MB/W	V130.1	\$90.59
White-Polyester	175°F	18259MD/W	V130.1	\$90.59
White-Polyester	200°F	18259ME/W	V130.1	\$90.59
White-Polyester	286°F	18259MG/W	V130.1	\$90.59
Black-Polyester ¹	155°F	18259MB/B	V130.1	\$90.59
Black-Polyester	175°F	18259MD/B	V130.1	\$90.59
Black-Polyester	200°F	18259ME/B	V130.1	\$90.59
Black-Polyester	286°F	18259MG/B	V130.1	\$90.59
Nickel PTFE (ENT) ³	155°F	18259JNB	V188.A	\$252.23
Nickel PTFE (ENT)	175°F	18259JND	V188.A	\$252.23
Nickel PTFE (ENT)	200°F	18259JNE	V188.A	\$252.23
Nickel PTFE (ENT)	286°F	18259JNG	V188.A	\$252.23
Std Sprinkler Wrench		21475M/B	V207	\$103.93

Finish	Temp	Part #	IPG	List Price
Standard Brass	155°F	18260AB	V130.1	\$83.14
Standard Brass	175°F	18260AD	V130.1	\$83.14
Standard Brass	200°F	18260AE	V130.1	\$83.14
Standard Brass	286°F	18260AG	V130.1	\$83.14
Chrome	155°F	18260FB	V130.1	\$90.59
Chrome	175°F	18260FD	V130.1	\$90.59
Chrome	200°F	18260FE	V130.1	\$90.59
Chrome	286°F	18260FG	V130.1	\$90.59
White-Polyester ¹	155°F	18260MB/W	V130.1	\$90.59
White-Polyester	175°F	18260MD/W	V130.1	\$90.59
White-Polyester	200°F	18260ME/W	V130.1	\$90.59
White-Polyester	286°F	18260MG/W	V130.1	\$90.59
Black-Polyester ¹	155°F	18260MB/B	V130.1	\$90.59
Black-Polyester	175°F	18260MD/B	V130.1	\$90.59
Black-Polyester	200°F	18260ME/B	V130.1	\$90.59
Black-Polyester	286°F	18260MG/B	V130.1	\$90.59
Nickel PTFE (ENT) ³	155°F	18260JNB	V188.A	\$252.23
Nickel PTFE (ENT)	175°F	18260JND	V188.A	\$252.23
Nickel PTFE (ENT)	200°F	18260JNE	V188.A	\$252.23
Nickel PTFE (ENT)	286°F	18260JNG	V188.A	\$252.23
Std Sprinkler Wrench		21475M/B	V207	\$103.93
Wrench for Rcsd w/Caps		13655W/B	V207	\$200.28

Select Escutcheons - Recessed Pendent Sprinklers*



Recessed Escutcheon

Model E-1 (push-on)

(includes cup & adapter)
(OD = 3-1/16" / 78 mm)

Finish	Size	Part #	IPG	List Price
Bright Brass	1/2"	06419AB	V201	\$51.83
Polished Chrome	1/2"	06419AF	V200	\$10.77
White	1/2"	06419AM/W	V200	\$10.77
Black	1/2"	06419AM/B	V201	\$22.66



Threaded Escutcheon

Model E-2 (thread-on)

(includes cup & adapter)
(OD = 3-1/8" / 80 mm)

Polished Chrome	1/2"	11038F	V200	\$10.81
White	1/2"	11038M/W	V200	\$10.81

*Refer to Page H-1 for complete list of available escutcheons

(1) Suitable for decorative applications; UL listed for corrosion resistance.

(2) REPLACEMENT ONLY - 8.0 K Factor sprinklers with 1/2" NPT thread size are not intended for use in new installations.

(3) Electroless Nickel PTFE (ENT) plating is UL Listed and FM Approved for corrosion resistance.



XT1
Quick Response
Standard Coverage
REPLACEMENT ONLY²

Glass Bulb
Upright
SIN: VK3502
K Factor: 8.0 (115)
Thread Size: **1/2 inch NPT**
Base Part #: 23873



XT1
Quick Response
Standard Coverage
REPLACEMENT ONLY²

Glass Bulb
Pendent
SIN: VK3522
K Factor: 8.0 (115)
Thread Size: **1/2 inch NPT**
Base Part #: 23874

Finish	Temp	Part #	IPG	List Price
Standard Brass	135°F	23873AA	V130	\$78.54
Standard Brass	155°F	23873AB	V130	\$78.54
Standard Brass	175°F	23873AD	V130	\$78.54
Standard Brass	200°F	23873AE	V130	\$78.54
Standard Brass	286°F	23873AG	V130	\$78.54
Chrome	135°F	23873FA	V130	\$85.58
Chrome	155°F	23873FB	V130	\$85.58
Chrome	175°F	23873FD	V130	\$85.58
Chrome	200°F	23873FE	V130	\$85.58
Chrome	286°F	23873FG	V130	\$85.58
White-Polyester ¹	135°F	23873MA/W	V130	\$85.58
White-Polyester	155°F	23873MB/W	V130	\$85.58
White-Polyester	175°F	23873MD/W	V130	\$85.58
White-Polyester	200°F	23873ME/W	V130	\$85.58
White-Polyester	286°F	23873MG/W	V130	\$85.58
Black-Polyester ¹	135°F	23873MA/B	V130	\$85.58
Black-Polyester	155°F	23873MB/B	V130	\$85.58
Black-Polyester	175°F	23873MD/B	V130	\$85.58
Black-Polyester	200°F	23873ME/B	V130	\$85.58
Black-Polyester	286°F	23873MG/B	V130	\$85.58
Nickel PTFE (ENT) ³	135°F	23873JNA	V188.A	\$252.23
Nickel PTFE (ENT)	155°F	23873JNB	V188.A	\$252.23
Nickel PTFE (ENT)	175°F	23873JND	V188.A	\$252.23
Nickel PTFE (ENT)	200°F	23873JNE	V188.A	\$252.23
Nickel PTFE (ENT)	286°F	23873JNG	V188.A	\$252.23

Finish	Temp	Part #	IPG	List Price
Standard Brass	135°F	23874AA	V130	\$78.54
Standard Brass	155°F	23874AB	V130	\$78.54
Standard Brass	175°F	23874AD	V130	\$78.54
Standard Brass	200°F	23874AE	V130	\$78.54
Standard Brass	286°F	23874AG	V130	\$78.54
Chrome	135°F	23874FA	V130	\$85.58
Chrome	155°F	23874FB	V130	\$85.58
Chrome	175°F	23874FD	V130	\$85.58
Chrome	200°F	23874FE	V130	\$85.58
Chrome	286°F	23874FG	V130	\$85.58
White-Polyester ¹	135°F	23874MA/W	V130	\$85.58
White-Polyester	155°F	23874MB/W	V130	\$85.58
White-Polyester	175°F	23874MD/W	V130	\$85.58
White-Polyester	200°F	23874ME/W	V130	\$85.58
White-Polyester	286°F	23874MG/W	V130	\$85.58
Black-Polyester ¹	135°F	23874MA/B	V130	\$85.58
Black-Polyester	155°F	23874MB/B	V130	\$85.58
Black-Polyester	175°F	23874MD/B	V130	\$85.58
Black-Polyester	200°F	23874ME/B	V130	\$85.58
Black-Polyester	286°F	23874MG/B	V130	\$85.58
Nickel PTFE (ENT) ³	135°F	23874JNA	V188.A	\$252.23
Nickel PTFE (ENT)	155°F	23874JNB	V188.A	\$252.23
Nickel PTFE (ENT)	175°F	23874JND	V188.A	\$252.23
Nickel PTFE (ENT)	200°F	23874JNE	V188.A	\$252.23
Nickel PTFE (ENT)	286°F	23874JNG	V188.A	\$252.23

Installation Wrenches			
Wrench - Standard	23559MB	V207	\$103.93
Wrench - Recessed	23560MB	V207	\$200.28

Select Escutcheons - Recessed Pendent Sprinklers*			
NP-1 push-on (chrome, 1/2 in)	22066F	V200	\$10.77
NP-1 push-on (white, 1/2 in)	22066M/W	V200	\$10.77
NP-2 threaded (chrome, 1/2 in)	22067F	V200	\$10.81

*Refer to Page H-1 for complete list of available escutcheons

(1) Suitable for decorative applications; UL listed for corrosion resistance.

(2) REPLACEMENT ONLY - 8.0 K Factor sprinklers with 1/2" NPT thread size are not intended for use in new installations.

(3) Electroless Nickel PTFE (ENT) plating is UL Listed and FM Approved for corrosion resistance.



Microfast® Model M
Quick Response
Standard Coverage
Glass Bulb
Conventional

SIN: VK310
K Factor: 5.6 (81)
Thread Size: 1/2 inch NPT
Base Part #: 19391



Microfast® Model M
Quick Response
Standard Coverage
Glass Bulb
Conventional

SIN: VK354
K Factor: 8.0 (115)
Thread Size: 3/4 inch NPT
Base Part #: 18261

Finish	Temp	Part #	IPG	List Price
Standard Brass	155°F	19391AB	V120	\$50.59
Standard Brass	175°F	19391AD	V120	\$50.59
Standard Brass	200°F	19391AE	V120	\$50.59
Standard Brass	286°F	19391AG	V120	\$50.59
Chrome	155°F	19391FB	V120	\$52.61
Chrome	175°F	19391FD	V120	\$52.61
Chrome	200°F	19391FE	V120	\$52.61
Chrome	286°F	19391FG	V120	\$52.61
White-Polyester ¹	155°F	19391MB/W	V120	\$52.61
White-Polyester	175°F	19391MD/W	V120	\$52.61
White-Polyester	200°F	19391ME/W	V120	\$52.61
White-Polyester	286°F	19391MG/W	V120	\$52.61
Black-Polyester ¹	155°F	19391MB/B	V120	\$94.42
Black-Polyester	175°F	19391MD/B	V120	\$94.42
Black-Polyester	200°F	19391ME/B	V120	\$94.42
Black-Polyester	286°F	19391MG/B	V120	\$94.42
Nickel PTFE (ENT) ²	155°F	19391JNB	V188.A	\$92.24
Nickel PTFE (ENT)	175°F	19391JND	V188.A	\$92.24
Nickel PTFE (ENT)	200°F	19391JNE	V188.A	\$92.24
Nickel PTFE (ENT)	286°F	19391JNG	V188.A	\$92.24
Std Sprinkler Wrench		21475M/B	V207	\$103.93

Finish	Temp	Part #	IPG	List Price
Standard Brass	155°F	18261AB	V131	\$82.21
Standard Brass	175°F	18261AD	V131	\$82.21
Standard Brass	200°F	18261AE	V131	\$82.21
Standard Brass	286°F	18261AG	V131	\$82.21
Chrome	155°F	18261FB	V131	\$95.87
Chrome	175°F	18261FD	V131	\$95.87
Chrome	200°F	18261FE	V131	\$95.87
Chrome	286°F	18261FG	V131	\$95.87
White-Polyester ¹	155°F	18261MB/W	V131	\$95.87
White-Polyester	175°F	18261MD/W	V131	\$95.87
White-Polyester	200°F	18261ME/W	V131	\$95.87
White-Polyester	286°F	18261MG/W	V131	\$95.87
Black-Polyester ¹	155°F	18261MB/B	V131	\$121.73
Black-Polyester	175°F	18261MD/B	V131	\$121.73
Black-Polyester	200°F	18261ME/B	V131	\$121.73
Black-Polyester	286°F	18261MG/B	V131	\$121.73
Nickel PTFE (ENT) ²	155°F	18261JNB	V188.A	\$120.11
Nickel PTFE (ENT)	175°F	18261JND	V188.A	\$120.11
Nickel PTFE (ENT)	200°F	18261JNE	V188.A	\$120.11
Nickel PTFE (ENT)	286°F	18261JNG	V188.A	\$120.11
Std Sprinkler Wrench		21475M/B	V207	\$103.93

Select Escutcheons - Recessed Pendent Sprinklers*



Recessed Escutcheon
Model E-1 (push-on)
(includes cup & adapter)
(OD = 3-1/16" / 78 mm)

Finish	Size	Part #	IPG	List Price
Bright Brass	1/2"	06419AB	V201	\$51.83
Polished Chrome	1/2"	06419AF	V200	\$10.77
White	1/2"	06419AM/W	V200	\$10.77
Black	1/2"	06419AM/B	V201	\$22.66



Threaded Escutcheon
Model E-2 (thread-on)
(includes cup & adapter)
(OD = 3-1/8" / 80 mm)

Finish	Size	Part #	IPG	List Price
Polished Chrome	1/2"	11038F	V200	\$10.81
White	1/2"	11038M/W	V200	\$10.81

*Refer to Page H-1 for complete list of available escutcheons

Select Escutcheons - Recessed Pendent Sprinklers*



Recessed Escutcheon
Model E-1 (push-on)
(includes cup & adapter)
(OD = 3-1/16" / 78 mm)

Finish	Size	Part #	IPG	List Price
Bright Brass	3/4"	20369B	V201	\$51.83
Polished Chrome	3/4"	20369F	V200	\$10.81
White	3/4"	20369M/W	V200	\$10.81
Black	3/4"	20369M/B	V201	\$22.66



Threaded Escutcheon
Model E-2 (thread-on)
(includes cup & adapter)
(OD = 3-1/8" / 80 mm)

Finish	Size	Part #	IPG	List Price
Polished Chrome	3/4"	20130F	V200	\$10.81
White	3/4"	20130M/W	V200	\$10.81

*Refer to Page H-1 for complete list of available escutcheons

(1) Suitable for decorative applications; UL listed for corrosion resistance.

(2) Electroless Nickel PTFE (ENT) plating is UL Listed and FM Approved for corrosion resistance.



**Quick Response
Standard Coverage
Glass Bulb
Conventional**

SIN: VK3101
K Factor: 5.6 (81)
Thread Size: 1/2 inch NPT
Base Part #: 23908



**Quick Response
Standard Coverage
Glass Bulb
Conventional**

SIN: VK3541
K Factor: 8.0 (115)
Thread Size: 3/4 inch NPT
Base Part #: 23912

Finish	Temp	Part #	IPG	List Price
Standard Brass	155°F	23908AB	V120	\$50.59
Standard Brass	175°F	23908AD	V120	\$50.59
Standard Brass	200°F	23908AE	V120	\$50.59
Standard Brass	286°F	23908AG	V120	\$50.59
Chrome	155°F	23908FB	V120	\$52.61
Chrome	175°F	23908FD	V120	\$52.61
Chrome	200°F	23908FE	V120	\$52.61
Chrome	286°F	23908FG	V120	\$52.61
White-Polyester ¹	155°F	23908MB/W	V120	\$52.61
White-Polyester	175°F	23908MD/W	V120	\$52.61
White-Polyester	200°F	23908ME/W	V120	\$52.61
White-Polyester	286°F	23908MG/W	V120	\$52.61
Black-Polyester ¹	155°F	23908MB/B	V120	\$94.42
Black-Polyester	175°F	23908MD/B	V120	\$94.42
Black-Polyester	200°F	23908ME/B	V120	\$94.42
Black-Polyester	286°F	23908MG/B	V120	\$94.42
Nickel PTFE (ENT) ²	155°F	23908JNB	V188.A	\$92.24
Nickel PTFE (ENT)	175°F	23908JND	V188.A	\$92.24
Nickel PTFE (ENT)	200°F	23908JNE	V188.A	\$92.24
Nickel PTFE (ENT)	286°F	23908JNG	V188.A	\$92.24

Finish	Temp	Part #	IPG	List Price
Standard Brass	155°F	23912AB	V131	\$82.21
Standard Brass	175°F	23912AD	V131	\$82.21
Standard Brass	200°F	23912AE	V131	\$82.21
Standard Brass	286°F	23912AG	V131	\$82.21
Chrome	155°F	23912FB	V131	\$95.87
Chrome	175°F	23912FD	V131	\$95.87
Chrome	200°F	23912FE	V131	\$95.87
Chrome	286°F	23912FG	V131	\$95.87
White-Polyester ¹	155°F	23912MB/W	V131	\$95.87
White-Polyester	175°F	23912MD/W	V131	\$95.87
White-Polyester	200°F	23912ME/W	V131	\$95.87
White-Polyester	286°F	23912MG/W	V131	\$95.87
Black-Polyester ¹	155°F	23912MB/B	V131	\$121.73
Black-Polyester	175°F	23912MD/B	V131	\$121.73
Black-Polyester	200°F	23912ME/B	V131	\$121.73
Black-Polyester	286°F	23912MG/B	V131	\$121.73
Nickel PTFE (ENT) ²	155°F	23912JNB	V188.A	\$120.11
Nickel PTFE (ENT)	175°F	23912JND	V188.A	\$120.11
Nickel PTFE (ENT)	200°F	23912JNE	V188.A	\$120.11
Nickel PTFE (ENT)	286°F	23912JNG	V188.A	\$120.11

Installation Wrench			
Wrench - Standard	23559MB	V207	\$103.93

(1) Suitable for decorative applications; UL listed for corrosion resistance.

(2) Electroless Nickel PTFE (ENT) plating is UL Listed and FM Approved for corrosion resistance.

Microfast® Model M
Quick Response
Standard Coverage
Glass Bulb
Horizontal Sidewall



SIN: VK333
K Factor: 2.8 (40)
Thread Size: 1/2 inch NPT
Base Part #: 20989

Microfast® Model M
Quick Response
Standard Coverage
Glass Bulb
Vertical Sidewall



SIN: VK306²
K Factor: 5.6 (81)
Thread Size: 1/2 inch NPT
Base Part #: 12983

Finish ²	Temp	Part #	IPG	List Price
Standard Brass	155°F	20989AB	V126	\$111.58
Standard Brass	175°F	20989AD	V126	\$111.58
Standard Brass	200°F	20989AE	V126	\$111.58
Standard Brass	286°F	20989AG	V126	\$111.58
Chrome	155°F	20989FB	V126	\$119.07
Chrome	175°F	20989FD	V126	\$119.07
Chrome	200°F	20989FE	V126	\$119.07
Chrome	286°F	20989FG	V126	\$119.07
White-Polyester ¹	155°F	20989MB/W	V126	\$119.07
White-Polyester	175°F	20989MD/W	V126	\$119.07
White-Polyester	200°F	20989ME/W	V126	\$119.07
White-Polyester	286°F	20989MG/W	V126	\$119.07
Black-Polyester ¹	155°F	20989MB/B	V126	\$136.76
Black-Polyester	175°F	20989MD/B	V126	\$136.76
Black-Polyester	200°F	20989ME/B	V126	\$136.76
Black-Polyester	286°F	20989MG/B	V126	\$136.76
Std Sprinkler Wrench		21475M/B	V207	\$103.93
Wrench for Rcsd w/Clip		13655W/B	V207	\$200.28

Finish ²	Temp	Part #	IPG	List Price
Standard Brass	155°F	12983AB	V126	\$111.58
Standard Brass	175°F	12983AD	V126	\$111.58
Standard Brass	200°F	12983AE	V126	\$111.58
Standard Brass	286°F	12983AG	V126	\$111.58
Chrome	155°F	12983FB	V126	\$119.07
Chrome	175°F	12983FD	V126	\$119.07
Chrome	200°F	12983FE	V126	\$119.07
Chrome	286°F	12983FG	V126	\$119.07
White-Polyester	155°F	12983MB/W	V126	\$119.07
White-Polyester	175°F	12983MD/W	V126	\$119.07
White-Polyester	200°F	12983ME/W	V126	\$119.07
White-Polyester	286°F	12983MG/W	V126	\$119.07
Black-Polyester	155°F	12983MB/B	V126	\$136.76
Black-Polyester	175°F	12983MD/B	V126	\$136.76
Black-Polyester	200°F	12983ME/B	V126	\$136.76
Black-Polyester	286°F	12983MG/B	V126	\$136.76
Std Sprinkler Wrench		21475M/B	V207	\$103.93

Select Escutcheons - Recessed Pendent Sprinklers*



Recessed Escutcheon
Model E-1 (push-on)
(includes cup & adapter)
(OD = 3-1/16" / 78 mm)

Finish	Size	Part #	IPG	List Price
Bright Brass	1/2"	06419AB	V201	\$51.83
Polished Chrome	1/2"	06419AF	V200	\$10.77
White	1/2"	06419AM/W	V200	\$10.77
Black	1/2"	06419AM/B	V201	\$22.66



Threaded Escutcheon
Model E-2 (thread-on)
(includes cup & adapter)
(OD = 3-1/8" / 80 mm)

Polished Chrome	1/2"	11038F	V200	\$10.81
White	1/2"	11038M/W	V200	\$10.81

*Refer to Page H-1 for complete list of available escutcheons

- (1) Suitable for decorative application; UL listed for corrosion resistance.
- (2) Also available with ENT (Electroless Nickel PTFE) plating for corrosion resistance (special order with extended lead time).
Contact customer service for price and availability. Special order ENT plated sprinklers may not have listings/approvals.

Microfast® Model M
Quick Response
Standard Coverage
Glass Bulb
Horizontal Sidewall



SIN: VK305¹
K Factor: 5.6 (81)
Thread Size: 1/2 inch NPT
Base Part #: 12997

Microfast® Model M
Quick Response
Standard Coverage
Glass Bulb
Horizontal Sidewall



SIN: VK360¹
K Factor: 8.0 (115)
Thread Size: 3/4 inch NPT
Base Part #: 15591

Finish	Temp	Part #	IPG	List Price
Standard Brass	155°F	12997AB	V126	\$74.31
Standard Brass	175°F	12997AD	V126	\$74.31
Standard Brass	200°F	12997AE	V126	\$74.31
Standard Brass	286°F	12997AG	V126	\$74.31
Chrome	155°F	12997FB	V126	\$80.02
Chrome	175°F	12997FD	V126	\$80.02
Chrome	200°F	12997FE	V126	\$80.02
Chrome	286°F	12997FG	V126	\$80.02
White-Polyester ²	155°F	12997MB/W	V126	\$80.97
White-Polyester	175°F	12997MD/W	V126	\$80.97
White-Polyester	200°F	12997ME/W	V126	\$80.97
White-Polyester	286°F	12997MG/W	V126	\$80.97
Black-Polyester ²	155°F	12997MB/B	V126	\$111.99
Black-Polyester	175°F	12997MD/B	V126	\$111.99
Black-Polyester	200°F	12997ME/B	V126	\$111.99
Black-Polyester	286°F	12997MG/B	V126	\$111.99
Nickel PTFE (ENT) ³	155°F	12997JNB	V188.A	\$120.11
Nickel PTFE (ENT)	175°F	12997JND	V188.A	\$120.11
Nickel PTFE (ENT)	200°F	12997JNE	V188.A	\$120.11
Nickel PTFE (ENT)	286°F	12997JNG	V188.A	\$120.11
Std Sprinkler Wrench		21475M/B	V207	\$103.93
Wrench for Rcsd w/Clip		13655W/B	V207	\$200.28

Finish	Temp	Part #	IPG	List Price
Standard Brass	135°F	15591AA	V132	\$74.72
Standard Brass	155°F	15591AB	V132	\$74.72
Standard Brass	175°F	15591AD	V132	\$74.72
Standard Brass	200°F	15591AE	V132	\$74.72
Chrome	135°F	15591FA	V132	\$85.99
Chrome	155°F	15591FB	V132	\$85.99
Chrome	175°F	15591FD	V132	\$85.99
Chrome	200°F	15591FE	V132	\$85.99
White-Polyester ²	135°F	15591MA/W	V132	\$85.99
White-Polyester	155°F	15591MB/W	V132	\$85.99
White-Polyester	175°F	15591MD/W	V132	\$85.99
White-Polyester	200°F	15591ME/W	V132	\$85.99
Black-Polyester ²	135°F	15591MA/B	V132	\$85.99
Black-Polyester	155°F	15591MB/B	V132	\$85.99
Black-Polyester	175°F	15591MD/B	V132	\$85.99
Black-Polyester	200°F	15591ME/B	V132	\$85.99
Std Sprinkler Wrench		21475M/B	V207	\$103.93
Wrench for Rcsd w/Clip		13655W/B	V207	\$200.28

Select Escutcheons - Recessed Pendent Sprinklers*



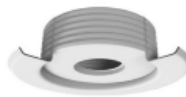
Recessed Escutcheon

Model E-1 (push-on)

(includes cup & adapter)

(OD = 3-1/16" / 78 mm)

Finish	Size	Part #	IPG	List Price
Bright Brass	1/2"	06419AB	V201	\$51.83
Polished Chrome	1/2"	06419AF	V200	\$10.77
White	1/2"	06419AM/W	V200	\$10.77
Black	1/2"	06419AM/B	V201	\$22.66



Threaded Escutcheon

Model E-2 (thread-on)

(includes cup & adapter)

(OD = 3-1/8" / 80 mm)

Finish	Size	Part #	IPG	List Price
Polished Chrome	1/2"	11038F	V200	\$10.81
White	1/2"	11038M/W	V200	\$10.81

*Refer to Page H-1 for complete list of available escutcheons

- (1) Light/Ordinary hazard
- (2) Suitable for decorative applications; UL Listed for corrosion resistance.
- (3) Electroless Nickel PTFE (ENT) plating is UL Listed and FM Approved for corrosion resistance.

Select Escutcheons - Recessed Pendent Sprinklers*



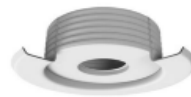
Recessed Escutcheon

Model E-1 (push-on)

(includes cup & adapter)

(OD = 3-1/16" / 78 mm)

Finish	Size	Part #	IPG	List Price
Bright Brass	3/4"	20369B	V201	\$51.83
Polished Chrome	3/4"	20369F	V200	\$10.81
White	3/4"	20369M/W	V200	\$10.81
Black	3/4"	20369M/B	V201	\$22.66



Threaded Escutcheon

Model E-2 (thread-on)

(includes cup & adapter)

(OD = 3-1/8" / 80 mm)

Finish	Size	Part #	IPG	List Price
Polished Chrome	3/4"	20130F	V200	\$10.81
White	3/4"	20130M/W	V200	\$10.81

*Refer to Page H-1 for complete list of available escutcheons



**Quick Response
Standard Coverage
Glass Bulb
Concealed Pendant**
SIN: VK46111¹
K Factor: 2.8 (40)
Thread Size: 1/2 inch NPT
Base Part #: 23438

Finish	Temp	Part #	IPG	List Price
Standard Brass	155°F	23438AB	V129	\$95.92
Standard Brass	175°F	23438AD	V129	\$95.92
Standard Brass	200°F	23438AE	V129	\$95.92



**Quick Response
Standard Coverage
Glass Bulb
Concealed Pendant**
SIN: VK46511¹
K Factor: 4.2 (57)
Thread Size: 1/2 inch NPT
Base Part #: 23233

Finish	Temp	Part #	IPG	List Price
Standard Brass	155°F	23233AB	V129	\$95.92
Standard Brass	175°F	23233AD	V129	\$95.92
Standard Brass	200°F	23233AE	V129	\$95.92

COVER PLATES AND WRENCHES ARE SOLD SEPARATELY - SEE PAGE B-14 AND B-15 FOR DETAILS



**Quick Response
Standard Coverage
Glass Bulb
Concealed Pendant**
SIN: VK46211¹
K Factor: 5.6 (81)
Thread Size: 1/2 inch NPT
Base Part #: 24682A

Finish	Temp	Part #	IPG	List Price
Standard Brass	155°F	24682AB	V129	\$69.08
Standard Brass	175°F	24682AD	V129	\$69.08
Standard Brass	200°F	24682AE	V129	\$69.08

COVER PLATES AND WRENCHES ARE SOLD SEPARATELY - SEE PAGE B-14 AND B-15 FOR DETAILS



**Mirage[®]
Quick Response
Standard Coverage
Glass Bulb
Concealed Pendant**
SIN: VK464
K Factor: 8.0 (115)
Thread Size: 3/4 inch NPT
Base Part #: 13614A

Finish	Temp	Part #	IPG	List Price
Standard Brass	155°F	13614AB	V129	\$122.83
Standard Brass	175°F	13614AD	V129	\$122.83
Standard Brass	200°F	13614AE	V129	\$122.83



**ELO Mirage^{® 2}
Quick Response
Standard Coverage
Fusible Link
Concealed Pendant**
SIN: VK469
K Factor: 11.2 (161)
Thread Size: 3/4 inch NPT
Base Part #: 15764A

Finish	Temp	Part #	IPG	List Price
Standard Brass	165°F	15764AC	V129	\$165.65
Standard Brass	205°F	15764AE	V129	\$165.65

(2) Use only cover plate 15765 with VK469

COVER PLATES AND WRENCHES ARE SOLD SEPARATELY - SEE PAGE B-14 AND B-15 FOR DETAILS



**Mirage[™] - HIGH PRESSURE
Quick Response
Standard Coverage
Glass Bulb
Concealed Pendant**
SIN: VK463
K Factor: 5.6 (81)
Thread Size: 1/2 inch NPT
Base Part #: 13667A

Finish	Temp	Part #	IPG	List Price
Standard Brass	155°F	13667AB	V129	\$65.08
Standard Brass	175°F	13667AD	V129	\$65.08
Standard Brass	200°F	13667AE	V129	\$65.08

(1) Available with special ENT finish for use in certain corrosive environments. Contact customer service for price and availability

Standard Cover Plate

Diameter = 2-3/4 inches, Thread On (2 slit base)
Use w/ VK461, 462, 4621 463, 464, 465



Finish	Temp	Part #	IPG	List
Polished Chrome	139°F	23190FA	V208	\$126.88
Polished Chrome	165°F	23190FC	V208	\$126.88
White	139°F	23190MA/W	V208	\$47.67
White	165°F	23190MC/W	V208	\$47.67
Ivory	139°F	23190MA/I	V209	\$60.57
Ivory	165°F	23190MC/I	V209	\$60.57
Black	139°F	23190MA/B	V209	\$60.57
Black	165°F	23190MC/B	V209	\$60.57
Bright Brass	139°F	23190BA	V209	\$60.57
Bright Brass	165°F	23190BC	V209	\$60.57
Brushed Brass	139°F	23190BA/B	V209	\$60.57
Brushed Brass	165°F	23190BC/B	V209	\$60.57
Antique Brass	139°F	23190BA/A	V209	\$60.57
Antique Brass	165°F	23190BC/A	V209	\$60.57
Brushed Copper	139°F	23190EA/B	V209	\$60.57
Brushed Copper	165°F	23190EC/B	V209	\$60.57
Brushed Chrome	139°F	23190FA/B	V209	\$60.57
Brushed Chrome	165°F	23190FC/B	V209	\$60.57

Large Cover Plate

Diameter = 3-5/16 inches, Thread On (2 slit base)
Use w/ VK461, 462, 4621, 463, 464, 465



Finish	Temp	Part #	IPG	List
Polished Chrome	139°F	23174FA	V208	\$126.88
Polished Chrome	165°F	23174FC	V208	\$126.88
White	139°F	23174MA/W	V208	\$47.67
White	165°F	23174MC/W	V208	\$47.67
Ivory	139°F	23174MA/I	V209	\$60.57
Ivory	165°F	23174MC/I	V209	\$60.57
Black	139°F	23174MA/B	V209	\$60.57
Black	165°F	23174MC/B	V209	\$60.57
Bright Brass	139°F	23174BA	V209	\$60.57
Bright Brass	165°F	23174BC	V209	\$60.57
Brushed Brass	139°F	23174BA/B	V209	\$60.57
Brushed Brass	165°F	23174BC/B	V209	\$60.57
Antique Brass	139°F	23174BA/A	V209	\$60.57
Antique Brass	165°F	23174BC/A	V209	\$60.57
Brushed Copper	139°F	23174EA/B	V209	\$60.57
Brushed Copper	165°F	23174EC/B	V209	\$60.57
Brushed Chrome	139°F	23174FA/B	V209	\$60.57
Brushed Chrome	165°F	23174FC/B	V209	\$60.57

Square Cover Plate

Thread On (2 slit base)

Use w/ VK461, 462, 4621, 463, 464, 465



Finish	Temp	Part #	IPG	List
Polished Chrome	139°F	23179FA	V210	\$81.75
Polished Chrome	165°F	23179FC	V210	\$81.75
White	139°F	23179MA/W	V210	\$78.47
White	165°F	23179MC/W	V210	\$78.47
Ivory	139°F	23179MA/I	V210	\$78.47
Ivory	165°F	23179MC/I	V210	\$78.47
Black	139°F	23179MA/B	V210	\$78.47
Black	165°F	23179MC/B	V210	\$78.47
Bright Brass	139°F	23179BA	V210	\$95.70
Bright Brass	165°F	23179BC	V210	\$95.70
Brushed Brass	139°F	23179BA/B	V210	\$95.70
Brushed Brass	165°F	23179BC/B	V210	\$95.70
Antique Brass	139°F	23179BA/A	V210	\$95.70
Antique Brass	165°F	23179BC/A	V210	\$95.70
Brushed Copper	139°F	23179EA/B	V210	\$95.70
Brushed Copper	165°F	23179EC/B	V210	\$95.70
Brushed Chrome	139°F	23179FA/B	V210	\$95.70
Brushed Chrome	165°F	23179FC/B	V210	\$95.70

Mirage ELO Cover Plate

Diameter = 3-5/16 inches

Use w/ VK469, VK636, VK538



Finish	Temp	Part #	IPG	List
Polished Chrome	139°F	15765FA	V208	\$124.95
Polished Chrome	165°F	15765FC	V208	\$124.95
White	139°F	15765MA/W	V208	\$47.67
White	165°F	15765MC/W	V208	\$47.67
Ivory	139°F	15765MA/I	V209	\$60.57
Ivory	165°F	15765MC/I	V209	\$60.57
Black	139°F	15765MA/B	V209	\$60.57
Black	165°F	15765MC/B	V209	\$60.57

For information on more Cover Plate options, please refer to Section H.

Cleanroom Cover Assembly

Diameter = 3-5/16 inches
cULus listed

Thread On (2 slit base)

For use w/ VK462 and VK464 only



Gasket color is white

- Provides seal for cleanroom and clean zone environments
- VK462 retains QR listing with cleanroom cover plate installed
- Cover plate available in 139°F and 165°F temperature rating
- Also listed for use with Mirage-MRI room sprinkler

Finish	Temp	Part #	IPG	List
Polished Chrome	139°F	23174FA/CR	V211	\$126.10
Polished Chrome	165°F	23174FC/CR	V211	\$126.10
White	139°F	23174MA/W/CR	V211	\$126.10
White	165°F	23174MC/W/CR	V211	\$126.10
Ivory	139°F	23174MA/I/CR	V211	\$126.10
Ivory	165°F	23174MC/I/CR	V211	\$126.10
Black	139°F	23174MA/B/CR	V211	\$126.10
Black	165°F	23174MC/B/CR	V211	\$126.10

Mirage® Concealed Pendent Sprinklers - Wrenches and Special Installation Tools

Standard / Heavy Duty Wrench

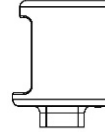
(use with all Mirage sprinklers except ELO spk)



Part #	IPG	List Price
14047W/B	V207	\$200.28

Standard / Heavy Duty Wrench (ELO concealed)

(use only with Mirage ELO concealed sprinklers)



Part #	IPG	List Price
15467W/B	V207	\$200.28

Standard / Light Duty Wrench

(use with all Mirage sprinklers except ELO spk)



Part #	IPG	List Price
14031	V205	\$40.47

(use only with Mirage ELO concealed sprinklers)

15466	V205	\$40.47
-------	------	---------

Installation Wrench

(use with VK4621/VK4921)



Part #	IPG	List Price
23143	V207	\$62.65

Cover Plate Installation Tool

Standard Diameter Cover Plates



Part #	IPG	List Price
14412	V205	\$17.84

Cover Plate Installation Tool

Large Diameter Cover Plates



Part #	IPG	List Price
14867	V205	\$17.84



Quick Response
Standard Coverage
Fusible Link
Light/Ordinary Hazard
Concealed Sidewall

SIN: VK481
K Factor: 5.6 (81)
Thread Size: 1/2 inch NPT
Base Part #: 17555A

VK481 Cover Plate¹
Diameter = 3-5/16 inches



Finish	Temp	Part #	IPG	List Price
Standard Brass	165°F	17555AC	V127	\$151.08
Standard Brass	205°F	17555AE	V127	\$151.08
Heavy Duty Spk Wrench		16208W/R	V207	\$200.28
Head Cabinet Wrench		16267	V207	\$41.05

Finish	Temp	Part #	IPG	List Price
White	139°F	16207MA/W	V213	\$55.27
White	165°F	16207MC/W	V213	\$55.27
Cover Plate Installation Tool		14867	V205	\$17.84

Cover plate sold separately (see below)

Flush Pendent³
Quick Response
Standard Coverage
Fusible Link



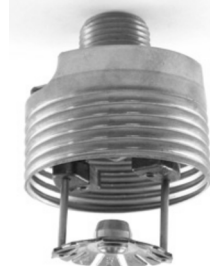
SIN: VK478⁴
K Factor: 5.6 (81)
Thread Size: 1/2 inch NPT
Base Part #: 19995

Finish	Temp	Part #	IPG	List Price
Painted White	165°F	19995MC/W	V128	\$99.68
Painted White	205°F	19995ME/W	V128	\$99.68
RAL9010/Pure White	165°F	19995MC/RAL9010	V128	\$110.75
RAL9010/Pure White	205°F	19995MC/RAL9010	V128	\$110.75
Heavy Duty Spk Wrench		15209W/R	V207	\$200.28



Mirage MRI Room Sprinkler*
Quick Response
Standard Coverage
Glass Bulb
Concealed Pendent

SIN: VK462-MRI
K Factor: 5.6 (81)
Thread Size: 1/2 inch NPT
Base Part #: 15480A



Mirage MRI Room Sprinkler*
Quick Response
Standard Coverage
Glass Bulb
Concealed Pendent

SIN: VK464-MRI
K Factor: 8.0 (115)
Thread Size: 3/4 inch NPT
Base Part #: 15481A

Finish	Temp	Part #	IPG	List Price
Standard Brass	155°F	15480AB	V129	\$350.73
Standard Brass	175°F	15480AD	V129	\$350.73
Standard Brass	200°F	15480AE	V129	\$350.73

Finish	Temp	Part #	IPG	List Price
Standard Brass	155°F	15481AB	V129	\$390.27
Standard Brass	175°F	15481AD	V129	\$390.27
Standard Brass	200°F	15481AE	V129	\$390.27

* For use in a high magnetic field environment, such as an MRI room (cover plates sold separately - See B-14)

- Cover plates sold separately. Covers are also available in custom colors at an additional charge (see pg. F-8)
- Ceiling rings for Horizon Model H-1 flush pendent sprinklers (VK402) are sold separately.
- Ceiling rings for new Model VK478 flush pendent sprinklers are INCLUDED with the sprinkler.
- See page H-8 for ceiling rings for both the Horizon Model H-1 (VK402) and the Model VK478 flush pendent sprinkler.



Microfast® Model M
Quick Response
Standard Coverage
FUSIBLE LINK¹
Upright Sprinklers

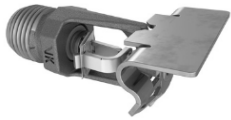


Microfast® Model M
Quick Response
Standard Coverage
FUSIBLE LINK¹
Pendent Sprinklers

Finish	Temp	Part #	IPG	List Price
VK326 - 2.8 (40) K Factor - 1/2 in NPT				
Standard Brass	165°F	20983AC	V124	\$91.99
Standard Brass	205°F	20983AE	V124	\$91.99
Standard Brass	280°F	20983AG	V124	\$91.99
Chrome	165°F	20983FC	V124	\$100.46
Chrome	205°F	20983FE	V124	\$100.46
Chrome	280°F	20983FG	V124	\$100.46
White-Polyester	165°F	20983MC/W	V124	\$100.46
White-Polyester	205°F	20983ME/W	V124	\$100.46
White-Polyester	280°F	20983MG/W	V124	\$100.46
VK328 - 4.2 (60) K Factor - 1/2 in NPT				
Standard Brass	165°F	21270AC	V124	\$91.99
Standard Brass	205°F	21270AE	V124	\$91.99
Standard Brass	280°F	21270AG	V124	\$91.99
Chrome	165°F	21270FC	V124	\$100.46
Chrome	205°F	21270FE	V124	\$100.46
Chrome	280°F	21270FG	V124	\$100.46
White-Polyester	165°F	21270MC/W	V124	\$100.46
White-Polyester	205°F	21270ME/W	V124	\$100.46
White-Polyester	280°F	21270MG/W	V124	\$100.46
VK301 - 5.6 (81) K Factor - 1/2 in NPT				
Standard Brass	165°F	17535AC	V124	\$75.73
Standard Brass	205°F	17535AE	V124	\$75.73
Standard Brass	280°F	17535AG	V124	\$75.73
Chrome	165°F	17535FC	V124	\$86.84
Chrome	205°F	17535FE	V124	\$86.84
Chrome	280°F	17535FG	V124	\$86.84
White-Polyester	165°F	17535MC/W	V124	\$86.84
White-Polyester	205°F	17535ME/W	V124	\$86.84
White-Polyester	280°F	17535MG/W	V124	\$86.84
Black-Polyester	165°F	17535MC/B	V124	\$100.74
Black-Polyester	205°F	17535ME/B	V124	\$100.74
Black-Polyester	280°F	17535MG/B	V124	\$100.74
VK351 - 8.0 (115) K Factor - 3/4 in NPT				
Standard Brass	165°F	18275AC	V133	\$87.83
Standard Brass	205°F	18275AE	V133	\$87.83
Standard Brass	280°F	18275AG	V133	\$87.83
Chrome	165°F	18275FC	V133	\$100.87
Chrome	205°F	18275FE	V133	\$100.87
Chrome	280°F	18275FG	V133	\$100.87
White-Polyester	165°F	18275MC/W	V133	\$100.87
White-Polyester	205°F	18275ME/W	V133	\$100.87
White-Polyester	280°F	18275MG/W	V133	\$100.87
Std Sprinkler Wrench		21475M/B	V207	\$103.93

Finish	Temp	Part #	IPG	List Price
VK330 - 2.8 (40) K Factor - 1/2 in NPT				
Standard Brass	165°F	20985AC	V124	\$91.99
Standard Brass	205°F	20985AE	V124	\$91.99
Standard Brass	280°F	20985AG	V124	\$91.99
Chrome	165°F	20985FC	V124	\$100.46
Chrome	205°F	20985FE	V124	\$100.46
Chrome	280°F	20985FG	V124	\$100.46
White-Polyester	165°F	20985MC/W	V124	\$100.46
White-Polyester	205°F	20985ME/W	V124	\$100.46
White-Polyester	280°F	20985MG/W	V124	\$100.46
VK332 - 4.2 (60) K Factor - 1/2 in NPT				
Standard Brass	165°F	21272AC	V124	\$91.99
Standard Brass	205°F	21272AE	V124	\$91.99
Standard Brass	280°F	21272AG	V124	\$91.99
Chrome	165°F	21272FC	V124	\$100.46
Chrome	205°F	21272FE	V124	\$100.46
Chrome	280°F	21272FG	V124	\$100.46
White-Polyester	165°F	21272MC/W	V124	\$100.46
White-Polyester	205°F	21272ME/W	V124	\$100.46
White-Polyester	280°F	21272MG/W	V124	\$100.46
VK303 - 5.6 (81) K Factor - 1/2 in NPT				
Standard Brass	165°F	17536AC	V124	\$75.73
Standard Brass	205°F	17536AE	V124	\$75.73
Standard Brass	280°F	17536AG	V124	\$75.73
Chrome	165°F	17536FC	V124	\$86.84
Chrome	205°F	17536FE	V124	\$86.84
Chrome	280°F	17536FG	V124	\$86.84
White-Polyester	165°F	17536MC/W	V124	\$86.84
White-Polyester	205°F	17536ME/W	V124	\$86.84
White-Polyester	280°F	17536MG/W	V124	\$86.84
Black-Polyester	165°F	17536MC/B	V124	\$100.74
Black-Polyester	205°F	17536ME/B	V124	\$100.74
Black-Polyester	280°F	17536MG/B	V124	\$100.74
VK353 - 8.0 (115) K Factor - 3/4 in NPT				
Standard Brass	165°F	18274AC	V133	\$87.83
Standard Brass	205°F	18274AE	V133	\$87.83
Standard Brass	280°F	18274AG	V133	\$87.83
Chrome	165°F	18274FC	V133	\$100.87
Chrome	205°F	18274FE	V133	\$100.87
Chrome	280°F	18274FG	V133	\$100.87
White-Polyester	165°F	18274MC/W	V133	\$100.87
White-Polyester	205°F	18274ME/W	V133	\$100.87
White-Polyester	280°F	18274MG/W	V133	\$100.87
Std Sprinkler Wrench		21475M/B	V207	\$103.93
Wrench for Recessed		13655W/B	V207	\$200.28

(1) Also available with ENT (Electroless Nickel PTFE) plating for corrosion resistance (special order with extended lead time).
Contact customer service for price and availability. Special order ENT plated sprinklers may not have listings/approvals.



Microfast® Model M
Quick Response
Standard Coverage
FUSIBLE LINK¹
Horizontal Sidewall

Finish	Temp	Part #	IPG	List Price
VK334 - 2.8 (40) K Factor - 1/2 in NPT				
Standard Brass	165°F	20990AC	V122	\$112.14
Standard Brass	205°F	20990AE	V122	\$112.14
Standard Brass	280°F	20990AG	V122	\$112.14
Chrome	165°F	20990FC	V122	\$114.84
Chrome	205°F	20990FE	V122	\$114.84
Chrome	280°F	20990FG	V122	\$114.84
White-Polyester	165°F	20990MC/W	V122	\$117.53
White-Polyester	205°F	20990ME/W	V122	\$117.53
White-Polyester	280°F	20990MG/W	V122	\$117.53
VK307 - 5.6 (81) K Factor - 1/2 in NPT				
Standard Brass	165°F	13947AC	V122	\$97.14
Standard Brass	205°F	13947AE	V122	\$97.14
Standard Brass	280°F	13947AG	V122	\$97.14
Chrome	165°F	13947FC	V122	\$103.05
Chrome	205°F	13947FE	V122	\$103.05
Chrome	280°F	13947FG	V122	\$103.05
White-Polyester	165°F	13947MC/W	V122	\$112.22
White-Polyester	205°F	13947ME/W	V122	\$112.22
White-Polyester	280°F	13947MG/W	V122	\$112.22
Std Sprinkler Wrench		21475M/B	V207	\$103.93
Wrench for Recessed		13655W/B	V207	\$200.28



Microfast® Model M
Quick Response
Standard Coverage
FUSIBLE LINK¹
Vertical Sidewall

Finish	Temp	Part #	IPG	List Price
VK309 - 5.6 (81) K Factor - 1/2 in NPT				
Standard Brass	165°F	13951AC	V122	\$129.55
Standard Brass	205°F	13951AE	V122	\$129.55
Chrome	165°F	13951FC	V122	\$133.39
Chrome	205°F	13951FE	V122	\$133.39
Std Sprinkler Wrench		21475M/B	V207	\$103.93



Microfast® Model M
Quick Response
Standard Coverage
FUSIBLE LINK¹
Conventional

Finish	Temp	Part #	IPG	List Price
VK311 - 5.6 (81) K Factor - 1/2 in NPT				
Standard Brass	165°F	19392AC	V124	\$75.73
Standard Brass	205°F	19392AE	V124	\$75.73
Standard Brass	280°F	19392AG	V124	\$75.73
Chrome	165°F	19392FC	V124	\$86.84
Chrome	205°F	19392FE	V124	\$75.73
Chrome	280°F	19392FG	V124	\$75.73
White-Polyester	165°F	19392MC/W	V124	\$86.84
White-Polyester	205°F	19392ME/W	V124	\$86.84
White-Polyester	280°F	19392MG/W	V124	\$86.84
Std Sprinkler Wrench		21475M/B	V207	\$103.93



Microfast® Model M
Quick Response
Standard Coverage
FUSIBLE LINK¹
Conventional

Finish	Temp	Part #	IPG	List Price
VK355 - 8.0 (115) K Factor - 3/4 in NPT				
Standard Brass	165°F	18276AC	V133	\$104.98
Standard Brass	205°F	18276AE	V133	\$104.98
Standard Brass	280°F	18276AG	V133	\$104.98
Chrome	165°F	18276FC	V133	\$126.93
Chrome	205°F	18276FE	V133	\$126.93
Chrome	280°F	18276FG	V133	\$126.93
White-Polyester	165°F	18276MC/W	V133	\$126.93
White-Polyester	205°F	18276ME/W	V133	\$126.93
White-Polyester	280°F	18276MG/W	V133	\$126.93
Std Sprinkler Wrench		21475M/B	V207	\$103.93



Microfast® Model M
Quick Response
Standard Coverage
FUSIBLE LINK¹
Upright
HIGH PRESSURE

Finish	Temp	Part #	IPG	List Price
VK341 - 2.8 (40) K Factor - 1/2 in NPT - UPRIGHT (HP)				
Standard Brass	165°F	20992AC	V124	\$96.15
Standard Brass	205°F	20992AE	V124	\$96.15
Standard Brass	280°F	20992AG	V124	\$96.15
Chrome	165°F	20992FC	V124	\$101.30
Chrome	205°F	20992FE	V124	\$101.30
Chrome	280°F	20992FG	V124	\$101.30
White-Polyester	165°F	20992MC/W	V124	\$101.30
White-Polyester	205°F	20992ME/W	V124	\$101.30
White-Polyester	280°F	20992MG/W	V124	\$101.30
VK316 - 5.6 (81) K Factor - 1/2 in NPT - UPRIGHT (HP)				
Standard Brass	165°F	13953AC	V123	\$73.51
Standard Brass	205°F	13953AE	V123	\$73.51
Standard Brass	280°F	13953AG	V123	\$73.51
Chrome	165°F	13953FC	V123	\$79.48
Chrome	205°F	13953FE	V123	\$79.48
Chrome	280°F	13953FG	V123	\$79.48
White-Polyester	165°F	13953MC/W	V123	\$79.48
White-Polyester	205°F	13953ME/W	V123	\$79.48
White-Polyester	280°F	13953MG/W	V123	\$79.48
Std Sprinkler Wrench		21475M/B	V207	\$103.93



Microfast® Model M
Quick Response
Standard Coverage
FUSIBLE LINK¹
Pendent
HIGH PRESSURE

Finish	Temp	Part #	IPG	List Price
VK343 - 2.8 (40) K Factor - 1/2 in NPT - PENDENT (HP)				
Standard Brass	165°F	20994AC	V123	\$96.15
Standard Brass	205°F	20994AE	V123	\$96.15
Standard Brass	280°F	20994AG	V123	\$96.15
Chrome	165°F	20994FC	V123	\$101.30
Chrome	205°F	20994FE	V123	\$101.30
Chrome	280°F	20994FG	V123	\$101.30
White-Polyester	165°F	20994MC/W	V123	\$101.30
White-Polyester	205°F	20994ME/W	V123	\$101.30
White-Polyester	280°F	20994MG/W	V123	\$101.30
VK318 - 5.6 (81) K Factor - 1/2 in NPT - PENDENT (HP)				
Standard Brass	165°F	13954AC	V123	\$73.51
Standard Brass	205°F	13954AE	V123	\$73.51
Standard Brass	280°F	13954AG	V123	\$73.51
Chrome	165°F	13954FC	V123	\$79.48
Chrome	205°F	13954FE	V123	\$79.48
Chrome	280°F	13954FG	V123	\$79.48
White-Polyester	165°F	13954MC/W	V123	\$79.48
White-Polyester	205°F	13954ME/W	V123	\$79.48
White-Polyester	280°F	13954MG/W	V123	\$79.48
Std Sprinkler Wrench		21475M/B	V207	\$103.93
Wrench for Recessed		13655W/B	V207	\$200.28



Microfast® Model M
Quick Response
Standard Coverage
FUSIBLE LINK¹
Horizontal Sidewall
HIGH PRESSURE

Finish	Temp	Part #	IPG	List Price
VK346 - 2.8 (40) K Factor - 1/2 in NPT - HSW (HP)				
Standard Brass	165°F	20996AC	V122	\$112.14
Standard Brass	205°F	20996AE	V122	\$112.14
Standard Brass	280°F	20996AG	V122	\$112.14
Chrome	165°F	20996FC	V122	\$114.84
Chrome	205°F	20996FE	V122	\$114.84
Chrome	280°F	20996FG	V122	\$114.84
White-Polyester	165°F	20996MC/W	V122	\$117.53
White-Polyester	205°F	20996ME/W	V122	\$117.53
White-Polyester	280°F	20996MG/W	V122	\$117.53
Std Sprinkler Wrench		21475M/B	V207	\$103.93
Wrench for Recessed		13655W/B	V207	\$200.28



Microfast® Model M
Quick Response
Standard Coverage
FUSIBLE LINK¹
Horizontal Sidewall
HIGH PRESSURE

Finish	Temp	Part #	IPG	List Price
VK320 - 5.6 (81) K Factor - 1/2 in NPT - HSW (HP)				
Standard Brass	165°F	13955AC	V122	\$97.14
Standard Brass	205°F	13955AE	V122	\$97.14
Standard Brass	280°F	13955AG	V122	\$97.14
Chrome	165°F	13955FC	V122	\$102.95
Chrome	205°F	13955FE	V122	\$102.95
Chrome	280°F	13955FG	V122	\$102.95
White-Polyester	165°F	13955MC/W	V122	\$112.14
White-Polyester	205°F	13955ME/W	V122	\$112.14
White-Polyester	280°F	13955MG/W	V122	\$112.14
Std Sprinkler Wrench		21475M/B	V207	\$103.93
Wrench for Recessed		13655W/B	V207	\$200.28

(1) Also available with ENT (Electroless Nickel PTFE) plating for corrosion resistance (special order with extended lead time).
Contact customer service for price and availability. Special order ENT plated sprinklers may not have listings/approvals.



Microfast™ Model M
HIGH PRESSURE - 250 PSI
Quick Response
Standard Coverage
Glass Bulb
Upright

SIN: VK340
K Factor: 2.8 (40)
Thread Size: 1/2 inch NPT
Base Part #: 20991



Microfast™ Model M
HIGH PRESSURE - 250 PSI
Quick Response
Standard Coverage
Glass Bulb
Pendent

SIN: VK342
K Factor: 2.8 (40)
Thread Size: 1/2 inch NPT
Base Part #: 20993

Finish ²	Temp	Part #	IPG	List Price
Standard Brass	155°F	20991AB	V121	\$78.61
Standard Brass	175°F	20991AD	V121	\$78.61
Standard Brass	200°F	20991AE	V121	\$78.61
Standard Brass	286°F	20991AG	V121	\$78.61
Chrome	155°F	20991FB	V121	\$84.23
Chrome	175°F	20991FD	V121	\$84.23
Chrome	200°F	20991FE	V121	\$84.23
Chrome	286°F	20991FG	V121	\$84.23
White-Polyester ¹	155°F	20991MB/W	V121	\$84.23
White-Polyester	175°F	20991MD/W	V121	\$84.23
White-Polyester	200°F	20991ME/W	V121	\$84.23
White-Polyester	286°F	20991MG/W	V121	\$84.23
Black-Polyester ¹	155°F	20991MB/B	V121	\$120.28
Black-Polyester	175°F	20991MD/B	V121	\$120.28
Black-Polyester	200°F	20991ME/B	V121	\$120.28
Black-Polyester	286°F	20991MG/B	V121	\$120.28
Std Sprinkler Wrench		21475M/B	V207	\$103.93

Finish ²	Temp	Part #	IPG	List Price
Standard Brass	155°F	20993AB	V121	\$78.61
Standard Brass	175°F	20993AD	V121	\$78.61
Standard Brass	200°F	20993AE	V121	\$78.61
Standard Brass	286°F	20993AG	V121	\$78.61
Chrome	155°F	20993FB	V121	\$84.23
Chrome	175°F	20993FD	V121	\$84.23
Chrome	200°F	20993FE	V121	\$84.23
Chrome	286°F	20993FG	V121	\$84.23
White-Polyester ¹	155°F	20993MB/W	V121	\$84.23
White-Polyester	175°F	20993MD/W	V121	\$84.23
White-Polyester	200°F	20993ME/W	V121	\$84.23
White-Polyester	286°F	20993MG/W	V121	\$84.23
Black-Polyester ¹	155°F	20993MB/B	V121	\$120.28
Black-Polyester	175°F	20993MD/B	V121	\$120.28
Black-Polyester	200°F	20993ME/B	V121	\$120.28
Black-Polyester	286°F	20993MG/B	V121	\$120.28
Std Sprinkler Wrench		21475M/B	V207	\$103.93
Wrench for Recessed		13655W/B	V207	\$200.28

Select Escutcheons - Recessed Pendent Sprinklers*



Recessed Escutcheon
Model E-1 (push-on)
(includes cup & adapter)
(OD = 3-1/16" / 78 mm)

Finish	Size	Part #	IPG	List Price
Bright Brass	1/2"	06419AB	V201	\$51.83
Polished Chrome	1/2"	06419AF	V200	\$10.77
White	1/2"	06419AM/W	V200	\$10.77
Black	1/2"	06419AM/B	V201	\$22.66



Threaded Escutcheon
Model E-2 (thread-on)
(includes cup & adapter)
(OD = 3-1/8" / 80 mm)

Finish	Size	Part #	IPG	List Price
Polished Chrome	1/2"	11038F	V200	\$10.81
White	1/2"	11038M/W	V200	\$10.81

*Refer to Page H-1 for complete list of available escutcheons

NOTE - High Pressure (HP) = Working pressure to 250 psi

- (1) Suitable for decorative applications; UL listed for corrosion resistance.
- (2) Also available with ENT (Electroless Nickel PTFE) plating for corrosion resistance (special order with extended lead time).
Contact customer service for price and availability. Special order ENT plated sprinklers may not have listings/approvals.



Microfast® Model M
HIGH PRESSURE - 250 PSI
Quick Response
Standard Coverage
Glass Bulb
Upright

SIN: VK315
K Factor: 5.6 (81)
Thread Size: 1/2 inch NPT
Base Part #: 12281



Microfast® Model M
HIGH PRESSURE - 250 PSI
Quick Response
Standard Coverage
Glass Bulb
Pendent

SIN: VK317
K Factor: 5.6 (81)
Thread Size: 1/2 inch NPT
Base Part #: 12282

Finish ²	Temp	Part #	IPG	List Price
Standard Brass	155°F	12281AB	V121	\$56.80
Standard Brass	175°F	12281AD	V121	\$56.80
Standard Brass	200°F	12281AE	V121	\$56.80
Standard Brass	286°F	12281AG	V121	\$56.80
Chrome	155°F	12281FB	V121	\$60.13
Chrome	175°F	12281FD	V121	\$60.13
Chrome	200°F	12281FE	V121	\$60.13
Chrome	286°F	12281FG	V121	\$60.13
White-Polyester ¹	155°F	12281MB/W	V121	\$60.13
White-Polyester	175°F	12281MD/W	V121	\$60.13
White-Polyester	200°F	12281ME/W	V121	\$60.13
White-Polyester	286°F	12281MG/W	V121	\$60.13
Black-Polyester ¹	155°F	12281MB/B	V121	\$93.54
Black-Polyester	175°F	12281MD/B	V121	\$93.54
Black-Polyester	200°F	12281ME/B	V121	\$93.54
Black-Polyester	286°F	12281MG/B	V121	\$93.54
Nickel PTFE (ENT) ²	155°F	12281JNB	V188.A	\$92.24
Nickel PTFE (ENT)	175°F	12281JND	V188.A	\$92.24
Nickel PTFE (ENT)	200°F	12281JNE	V188.A	\$92.24
Nickel PTFE (ENT)	286°F	12281JNG	V188.A	\$92.24
Std Sprinkler Wrench		21475M/B	V207	\$103.93

Finish ²	Temp	Part #	IPG	List Price
Standard Brass	155°F	12282AB	V121	\$56.80
Standard Brass	175°F	12282AD	V121	\$56.80
Standard Brass	200°F	12282AE	V121	\$56.80
Standard Brass	286°F	12282AG	V121	\$56.80
Chrome	155°F	12282FB	V121	\$60.13
Chrome	175°F	12282FD	V121	\$60.13
Chrome	200°F	12282FE	V121	\$60.13
Chrome	286°F	12282FG	V121	\$60.13
White-Polyester ¹	155°F	12282MB/W	V121	\$60.13
White-Polyester	175°F	12282MD/W	V121	\$60.13
White-Polyester	200°F	12282ME/W	V121	\$60.13
White-Polyester	286°F	12282MG/W	V121	\$60.13
Black-Polyester ¹	155°F	12282MB/B	V121	\$93.54
Black-Polyester	175°F	12282MD/B	V121	\$120.28
Black-Polyester	200°F	12282ME/B	V121	\$120.28
Black-Polyester	286°F	12282MG/B	V121	\$120.28
Nickel PTFE (ENT) ²	155°F	12282MB/B	V121	\$93.54
Nickel PTFE (ENT)	175°F	12282MD/B	V121	\$120.28
Nickel PTFE (ENT)	200°F	12282ME/B	V121	\$120.28
Nickel PTFE (ENT)	286°F	12282MG/B	V121	\$120.28
Std Sprinkler Wrench		21475M/B	V207	\$103.93
Wrench for Recessed		13655W/B	V207	\$200.28

NOTE - High Pressure (HP) = Working pressure to 250 psi

Select Escutcheons - Recessed Pendent Sprinklers*



Recessed Escutcheon
Model E-1 (push-on)
(includes cup & adapter)
(OD = 3-1/16" / 78 mm)

Finish	Size	Part #	IPG	List Price
Bright Brass	1/2"	06419AB	V201	\$51.83
Polished Chrome	1/2"	06419AF	V200	\$10.77
White	1/2"	06419AM/W	V200	\$10.77
Black	1/2"	06419AM/B	V201	\$22.66



Threaded Escutcheon
Model E-2 (thread-on)
(includes cup & adapter)
(OD = 3-1/8" / 80 mm)

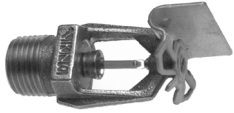
Polished Chrome	1/2"	11038F	V200	\$10.81
White	1/2"	11038M/W	V200	\$10.81

*Refer to Page H-1 for complete list of available escutcheons

(1) Suitable for decorative applications; UL listed for corrosion resistance.

(2) Electroless Nickel PTFE (ENT) plating is UL Listed and FM Approved for corrosion resistance.

Microfast® Model M
HIGH PRESSURE - 250 PSI
Quick Response
Standard Coverage
Glass Bulb
Horizontal Sidewall



SIN: VK344¹
K Factor: 2.8 (40)
Thread Size: 1/2 inch NPT
Base Part #: 20995

Finish ⁴	Temp	Part #	IPG	List Price
Standard Brass	155°F	20995AB	V125	\$110.73
Standard Brass	175°F	20995AD	V125	\$110.73
Standard Brass	200°F	20995AE	V125	\$110.73
Standard Brass	286°F	20995AG	V125	\$110.73
Chrome	155°F	20995FB	V125	\$118.16
Chrome	175°F	20995FD	V125	\$118.16
Chrome	200°F	20995FE	V125	\$118.16
Chrome	286°F	20995FG	V125	\$118.16
White-Polyester ³	155°F	20995MB/W	V125	\$118.16
White-Polyester	175°F	20995MD/W	V125	\$118.16
White-Polyester	200°F	20995ME/W	V125	\$118.16
White-Polyester	286°F	20995MG/W	V125	\$118.16
Black-Polyester ³	155°F	20995MB/B	V125	\$135.72
Black-Polyester	175°F	20995MD/B	V125	\$135.72
Black-Polyester	200°F	20995ME/B	V125	\$135.72
Black-Polyester	286°F	20995MG/B	V125	\$135.72
Std Sprinkler Wrench		21475M/B	V207	\$103.93
Wrench for Recessed		13655W/B	V207	\$200.28

Microfast® Model M
HIGH PRESSURE - 250 PSI
Quick Response
Standard Coverage
Glass Bulb
Horizontal Sidewall



SIN: VK319²
K Factor: 5.6 (81)
Thread Size: 1/2 inch NPT
Base Part #: 12285

Finish ⁴	Temp	Part #	IPG	List Price
Standard Brass	155°F	12285AB	V125	\$73.73
Standard Brass	175°F	12285AD	V125	\$73.73
Standard Brass	200°F	12285AE	V125	\$73.73
Standard Brass	286°F	12285AG	V125	\$73.73
Chrome	155°F	12285FB	V125	\$79.40
Chrome	175°F	12285FD	V125	\$79.40
Chrome	200°F	12285FE	V125	\$79.40
Chrome	286°F	12285FG	V125	\$79.40
White-Polyester ³	155°F	12285MB/W	V125	\$80.35
White-Polyester	175°F	12285MD/W	V125	\$80.35
White-Polyester	200°F	12285ME/W	V125	\$80.35
White-Polyester	286°F	12285MG/W	V125	\$80.35
Black-Polyester ³	155°F	12285MB/B	V125	\$111.15
Black-Polyester	175°F	12285MD/B	V125	\$111.15
Black-Polyester	200°F	12285ME/B	V125	\$111.15
Black-Polyester	286°F	12285MG/B	V125	\$111.15
Nickel PTFE (ENT)	155°F	12285JNB	V188.A	\$138.75
Nickel PTFE (ENT)	175°F	12285JND	V188.A	\$138.75
Nickel PTFE (ENT)	200°F	12285JNE	V188.A	\$138.75
Nickel PTFE (ENT)	286°F	12285JNG	V188.A	\$138.75
Std Sprinkler Wrench		21475M/B	V207	\$103.93
Wrench for Recessed		13655W/B	V207	\$200.28

Select Escutcheons - Recessed Pendent Sprinklers*



Recessed Escutcheon
Model E-1 (push-on)
(includes cup & adapter)
(OD = 3-1/16" / 78 mm)

Finish	Size	Part #	IPG	List Price
Bright Brass	1/2"	06419AB	V201	\$51.83
Polished Chrome	1/2"	06419AF	V200	\$10.77
White	1/2"	06419AM/W	V200	\$10.77
Black	1/2"	06419AM/B	V201	\$22.66




Threaded Escutcheon
Model E-2 (thread-on)
(includes cup & adapter)
(OD = 3-1/8" / 80 mm)

Finish	Size	Part #	IPG	List Price
Polished Chrome	1/2"	11038F	V200	\$10.81
White	1/2"	11038M/W	V200	\$10.81

- (1) Light hazard
- (2) Light / Ordinary hazard
- (3) Suitable for decorative applications; UL listed for corrosion resistance.
- (4) Also available with ENT (Electroless Nickel PTFE) plating for corrosion resistance (special order with extended lead time).
Contact customer service for price and availability. Special order ENT plated sprinklers may not have listings/approvals.




XT1
HIGH PRESSURE - 250 PSI
Quick Response
Standard Coverage
Glass Bulb
Upright



SIN: VK3001
K Factor: 5.6 (81)
Thread Size: 1/2 inch NPT
Base Part #: 23869



XT1
HIGH PRESSURE - 250 PSI
Quick Response
Standard Coverage
Glass Bulb
Pendent



SIN: VK3021
K Factor: 5.6 (81)
Thread Size: 1/2 inch NPT
Base Part #: 23870

Finish	Temp	Part #	IPG	List Price
Standard Brass	135°F	23869AA	V120	\$42.39
Standard Brass	155°F	23869AB	V120	\$42.39
Standard Brass	175°F	23869AD	V120	\$42.39
Standard Brass	200°F	23869AE	V120	\$42.39
Standard Brass	286°F	23869AG	V120	\$42.39
Chrome	135°F	23869FA	V120	\$56.66
Chrome	155°F	23869FB	V120	\$56.66
Chrome	175°F	23869FD	V120	\$56.66
Chrome	200°F	23869FE	V120	\$56.66
Chrome	286°F	23869FG	V120	\$56.66
White-Polyester ¹	135°F	23869MA/W	V120	\$56.66
White-Polyester	155°F	23869MB/W	V120	\$56.66
White-Polyester	175°F	23869MD/W	V120	\$56.66
White-Polyester	200°F	23869ME/W	V120	\$56.66
White-Polyester	286°F	23869MG/W	V120	\$56.66
Black-Polyester ¹	135°F	23869MA/B	V120	\$94.42
Black-Polyester	155°F	23869MB/B	V120	\$94.42
Black-Polyester	175°F	23869MD/B	V120	\$94.42
Black-Polyester	200°F	23869ME/B	V120	\$94.42
Black-Polyester	286°F	23869MG/B	V120	\$94.42
Nickel PTFE (ENT) ²	135°F	23869JNA	V188.A	\$101.85
Nickel PTFE (ENT) ²	155°F	23869JNB	V188.A	\$101.85
Nickel PTFE (ENT)	175°F	23869JND	V188.A	\$101.85
Nickel PTFE (ENT)	200°F	23869JNE	V188.A	\$101.85
Nickel PTFE (ENT)	286°F	23869JNG	V188.A	\$101.85

Finish	Temp	Part #	IPG	List Price
Standard Brass	135°F	23870AA	V120	\$42.39
Standard Brass	155°F	23870AB	V120	\$42.39
Standard Brass	175°F	23870AD	V120	\$42.39
Standard Brass	200°F	23870AE	V120	\$42.39
Standard Brass	286°F	23870AG	V120	\$42.39
Chrome	135°F	23870FA	V120	\$44.96
Chrome	155°F	23870FB	V120	\$44.96
Chrome	175°F	23870FD	V120	\$44.96
Chrome	200°F	23870FE	V120	\$44.96
Chrome	286°F	23870FG	V120	\$44.96
White-Polyester ¹	135°F	23870MA/W	V120	\$44.96
White-Polyester	155°F	23870MB/W	V120	\$44.96
White-Polyester	175°F	23870MD/W	V120	\$44.96
White-Polyester	200°F	23870ME/W	V120	\$44.96
White-Polyester	286°F	23870MG/W	V120	\$44.96
Black-Polyester ¹	135°F	23870MA/B	V120	\$80.70
Black-Polyester	155°F	23870MB/B	V120	\$80.70
Black-Polyester	175°F	23870MD/B	V120	\$80.70
Black-Polyester	200°F	23870ME/B	V120	\$80.70
Black-Polyester	286°F	23870MG/B	V120	\$80.70
Nickel PTFE (ENT) ²	135°F	23870JNA	V188.A	\$101.85
Nickel PTFE (ENT) ²	155°F	23870JNB	V188.A	\$101.85
Nickel PTFE (ENT)	175°F	23870JND	V188.A	\$101.85
Nickel PTFE (ENT)	200°F	23870JNE	V188.A	\$101.85
Nickel PTFE (ENT)	286°F	23870JNG	V188.A	\$101.85

Installation Wrenches			
Wrench - Straight	23559MB	V207	\$103.93
Wrench - Recessed	23560MB	V207	\$200.28

Select Escutcheons - Recessed Pendent Sprinklers*			
NP-1 push-on (chrome, 1/2 in)	22066F	V200	\$10.77
NP-1 push-on (white, 1/2 in)	22066M/W	V200	\$10.77
NP-2 threaded (chrome, 1/2 in)	22067F	V200	\$10.81

*Refer to Page H-1 for complete list of available escutcheons

(1) Suitable for decorative application; UL listed for corrosion resistance.
(2) Electroless Nickel PTFE (ENT) plating is UL Listed and FM Approved for corrosion resistance.



**Microfast® Stainless Steel
CORROSION RESISTANT**

**Quick Response
Standard Coverage
Glass Bulb
Stainless Steel - Upright**

SIN: VK338
K Factor: 5.6 (81)
Thread Size: 1/2 inch NPT
Base Part #: 14692



**Microfast® Stainless Steel
CORROSION RESISTANT**

**Quick Response
Standard Coverage
Glass Bulb
Stainless Steel - Pendent**

SIN: VK339
K Factor: 5.6 (81)
Thread Size: 1/2 inch NPT
Base Part #: 14693

Finish	Temp	Part #	IPG	List Price
Stainless Steel	135°F	14692A	V110	\$751.27
Stainless Steel	155°F	14692B	V110	\$751.27
Stainless Steel	175°F	14692D	V110	\$751.27
Stainless Steel	200°F	14692E	V110	\$751.27
Stainless Steel	286°F	14692G	V110	\$751.27
Std Sprinkler Wrench		21475M/B	V207	\$103.93

Finish	Temp	Part #	IPG	List Price
Stainless Steel	135°F	14693A	V110	\$751.27
Stainless Steel	155°F	14693B	V110	\$751.27
Stainless Steel	175°F	14693D	V110	\$751.27
Stainless Steel	200°F	14693E	V110	\$751.27
Stainless Steel	286°F	14693G	V110	\$751.27
Std Sprinkler Wrench		21475M/B	V207	\$103.93

Select Escutcheons - Stainless Steel Sprinklers*				
Standard Flat Surface-Mounted Escutcheons				
Finish	Size	Part #	IPG	List Price
Polished Chrome	3-5/16"	09488F	V201	\$26.93
Nickel PTFE (ENT)	3-5/16"	09488JN	V188.A	\$50.44
Polished Chrome	2-3/4"	07526F	V201	\$21.91
Nickel PTFE (ENT)	2-3/4"	07526JN	V188.A	\$50.85

* Refer to Page H-1 for complete list of available escutcheons

