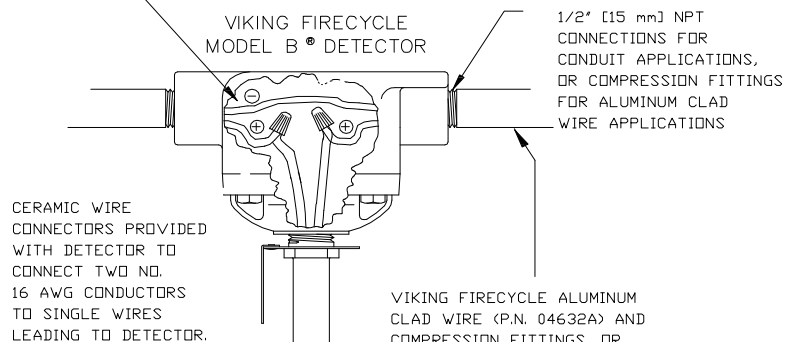
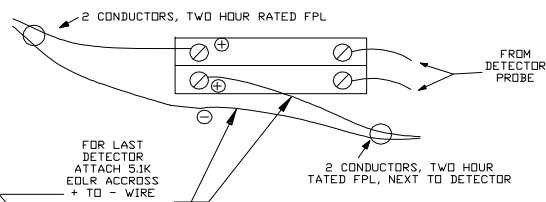
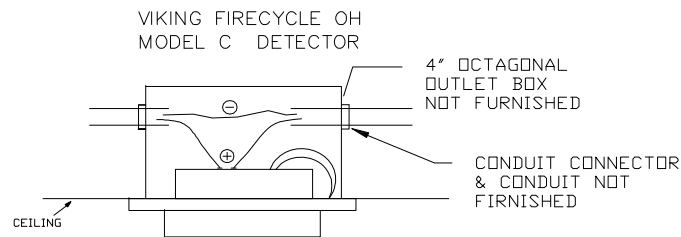
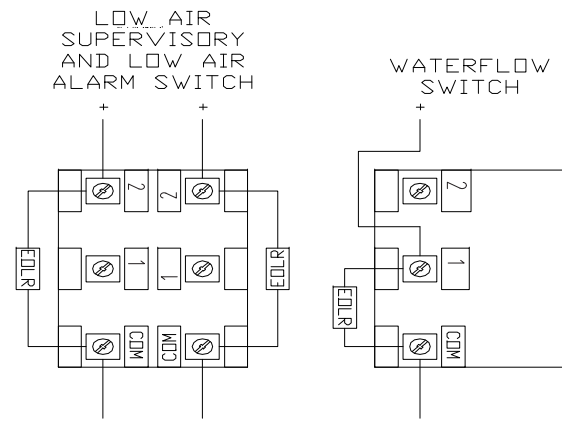


| | RECOMMENDED AIR PRESSURE SETTINGS | |
|---------------------|-----------------------------------|--|
| WATER SUPPLY (psig) | LOW AIR ALARM ZONE #2 (psig) | LOW AIR SUPERVISORY SUP ZONE #1 (psig) |
| 0 - 175 | 30 | 30 |
| 175 - 250 | 50 | 50 |

| EXTRA HAZARD APPLICATIONS | | | | ORDINARY & LIGHT HAZARD APP. | | | |
|-----------------------------|----------|--------------------------|----------|--------------------------------|----------|-----------------|----------|
| FIRECYCLE DETECTORS MODEL B | | | | FIRECYCLE OH DETECTORS MODEL C | | | |
| WITH 04632A CABLE | | WITH FPL WIRE IN CONDUIT | | FLUSH MOUNTED | | SURFACE MOUNTED | |
| TEMP. F° | PART NO. | TEMP. F° | PART NO. | TEMP. F° | PART NO. | TEMP. F° | PART NO. |
| 140 | 04711A | 140 | 08288 | 140 | 11723 | 140 | 11727 |
| 160 | 04717A | 160 | 08289 | 160 | 11724 | 160 | 11728 |
| 190 | 04718A | 190 | 08290 | 190 | 11725 | 190 | 11729 |
| 225 | 04719A | 225 | 08291 | 225 | 11726 | 225 | 11730 |



VIKING FIRECYCLE ALUMINUM CLAD WIRE (P.N. 04632A) AND COMPRESSION FITTINGS, OR PROVIDE STEEL CONDUIT AND FIRECYCLE DETECTOR CABLE (P.N. 09954) OR TWO HOUR RATED FPL CABLE

