



Synthetic Fluorine Free (SFFF) Foam System Offering

Viking offers a complete FM Approved and UL Listed Synthetic Fluorine Free foam system for Hydrocarbon and Polar Solvent applications. Common low expansion foam applications include aircraft hangars, helipads, tank farms and much more.

Low expansion foam works by creating a layer of foam that cools the substance while suppressing the vapors being released and preventing oxygen from reaching the fuel. This effect smothers the fire, putting it out.

Synthetic Fluorine Free Foam (SFFF) is a low expansion foam concentrate free from fluorinated surfactants and polymers, providing an environmentally stable solution with industry-leading fire-fighting capabilities. Complete your foam package with a selection of proportioners, bladder tanks, Viking sprinklers and much more.

Low expansion foam options include ARK 3% and USP 3%



In order to offer assurance that SFFF products are able to meet environmental guidelines and safety standards, Viking implemented a simple icon that customers can look for when trying to ensure these needs are met. When investing in SFFF systems from Viking, customers can be confident that they're purchasing top-quality products meeting the highest safety standards possible.

For more information, please contact your Viking sales representative or visit our website at vikinggroupinc.com.



DIGITAL TOOLS



Estimate new systems or transition an existing low expansion system to synthetic fluorine free foam with our LoEx Foam Estimator tool. Scan the QR code, or visit loex.vikingcorp.com to get started.

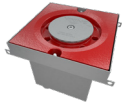
VKG-3014

Discharge Devices



Model GN202 Grate Nozzles

FM Approved GN202 grate nozzles are installed flush to the floor within a trench drain in a hangar, or, within or surrounding a helipad platform. The GN202 is available with a 360°, 180° or 90° discharge pattern and 26", 20" and 555 mm widths to meet design requirements.



Model GN202 Helideck Nozzles

FM approved GN202 helideck nozzles are installed flush to the helideck as either 180° or 90° perimeter nozzles, or 360° in the deck. Helideck nozzles are listed with the FM Approved USP foam concentrate.



Viking Fire Sprinklers

Select FM Approved and UL Listed upright and pendent sprinklers with K-factors ranging from 5.6, 8.0 and 11.2 work seamlessly with SFFF foam concentrate. The sprinklers meet the requirements of FM Global data sheet 4-12.



Oscillating Foam Monitors

UL Listed oscillating foam monitors are used with water or foam solutions for a specific area or risk, covering large areas of an application. Manual or oscillating monitors are usually part of a fixed deluge or flow control system but can also be supplied locally via hydrant or fire truck hose supplies.



Foam Makers

FM Approved and UL Listed Model VFM foam makers are in-line fixed foam aspirating devices. They are used in low expansion foam discharge applications to protect tank farm dikes and other low-level discharge applications.



Foam Chambers

Model VFC foam chambers are suitable for the protection of fixed roof-mounted tanks and are to be used as low expansion Type II discharge devices (as defined by NFPA11) with approved and/or listed foam concentrates and proportioning devices. UL Listed Model VFC foam chambers apply an expanded foam blanket over the surface of a flammable liquid fire as gently as possible to achieve extinguishment and/or vapor suppression.

Foam Storage



Foam Bladder Tanks

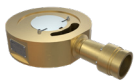
Vertical and horizontal bladder tanks are carbon steel pressure vessels containing an elastomeric bladder between the water and foam concentrate. The bladder permits water pressure to be transferred to the foam concentrate without the two fluids mixing together.



SAFE-Tanks®

Poly Processing's SAFE-Tank® is a "tank-within-a-tank" system. These tanks provide secondary containment, are available in a variety of sizes and are typically paired with a foam concentrate pump.

Proportioner



Model VNR Wide Range Proportioners

Proportioners are an integral part to a complete foam system package. The Model VNR Wide Range Proportioner accurately proportions foam concentrate into a water stream over a wide range of system flow rates, and is configured to proportion foam concentrate at a 3% ratio.



Model VLF In-Line Balanced Pressure (ILBP) Proportioner

The Model VLF ILBP proportioner is a foam proportioning device used to balance the higher foam concentrate pressure to the lower system water pressure on pilot pressure regulating systems or foam pump proportioning systems.

Foam Ratio Controller



Model VRC Ratio Controller

The FM Approved and UL Listed Model VRC ratio controller is an integral part of an approved foam system that accurately proportions foam concentrate into a water stream over a wide range of water flow rates.