



TECHNICAL BULLETIN

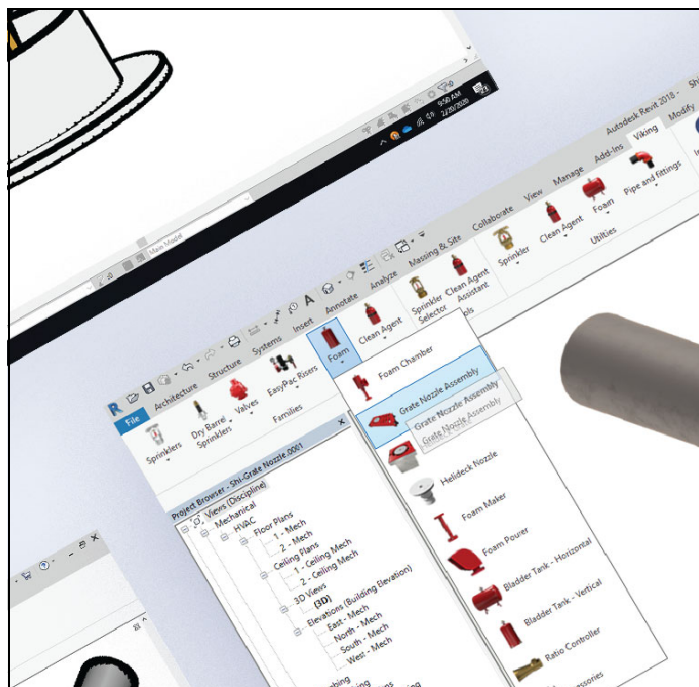
IMPERIAL TO METRIC CONVERSIONS

TECHNICAL BULLETIN

Viking typically uses the Automatic Sprinkler Systems Handbook's tables (Section 1.7, Exhibit 1.3, 2019 ed.) to convert imperial units of measurement to metric units. In certain situations, Viking uses conversions that offer slightly more accuracy than the tables in the handbook. An example of this can be found on form F_010715 Revision 05 dated March 2025. The "Maximum Area of Coverage" pertaining to UL installations with 48 ft (14.6m) is shown as "100 ft² (9,3m²)". This measurement could be converted differently for each of the following examples:

- Mathematic conversion: $100\text{ft}^2 = 9.2903130\text{m}^2$
- Automatic Sprinkler Systems Handbook: $100\text{ft}^2 = 9\text{m}^2$
- NFPA 13, 2022 ed.: $1\text{ft}^2 = 0.929\text{m}^2 \Rightarrow 100\text{ft}^2 = 9.29\text{m}^2$

If a more accurate method of converting imperial units shown on Viking technical data documents is desired, a mathematical conversion may be substituted for the version shown on the document in question. In all cases, the imperial measurements shown are the governing data and shall always be used as the basis for converting to metric units.



For further information, questions, or other concerns, please contact Viking Technical Service.

The Viking Corporation
5150 Beltway SE
Caledonia, MI 49316
Tel.: (800) 968-9501
Fax: 269-818-1680
Technical Services: 1-877-384-5464
techsvcs@vikingcorp.com