



Section M
Dry Pipe Systems

TABLE OF CONTENTS

Model VXR Dry Valve & Trim.....	M-1
Model VXD Data Center Upgradeable Pre-Trimmed Riser Assembly	M-2
Dry Pipe System (Model F)	M-2
Accelerators / Air Maintenance Devices	M-3
Accessories and Components.....	M-4

Notes

1. Refer to Viking technical data pages for complete product specifications. You may print or download technical data by visiting www.vikinggroupinc.com.
2. List prices effective May 10, 2025. Supersedes July 2022 list price book.
3. All sales by Viking are subject to the Terms & Conditions found on the last page of this book.



Dry Pipe Valve Model VXR - External Reset



VXR Dry Pipe Valve			
Groove/Groove IPG V264			
2-1/2"	3"	4"	6"
<u>24047</u>	<u>24065</u>	<u>24068</u>	<u>24069</u>
\$6,498.81	\$6,498.81	\$7,283.63	\$9,106.98

Loose Trim Galvanized IPG 265			
2-1/2"	3"	4"	6"
<u>24064-1</u>	<u>24099-1</u>	<u>24106-1</u>	<u>24109-1</u>
\$2,531.07	\$2,531.07	\$2,586.05	\$2,586.05

Pretrimmed Galvanized IPG V267			
2-1/2"	3"	4"	6"
<u>24097-1USA</u>	<u>24100-1USA</u>	<u>24107-1USA</u>	<u>24110-1USA</u>
\$11,595.23	\$11,595.23	\$12,390.62	\$14,806.56


Pretrimmed Riser (PTR) Galvanized IPG268			
2-1/2"	3"	4"	6"
<u>24746-1</u>	<u>24748-1</u>	<u>24750-1</u>	<u>24752-1</u>
\$10,876.69	\$10,876.69	\$11,516.46	\$13,435.87

PTR = fully assembled riser with control valve & switches

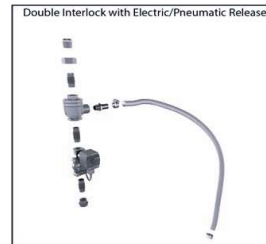
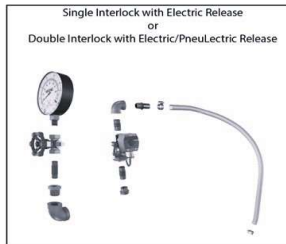
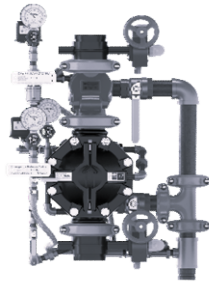
Model VXR Dry Pipe Systems with the Model EA-1 Electronic Accelerator

Pretrimmed Riser (PTR)		Pretrimmed (PTUSA)		EA-1/CoilKeeper	Monitored Solenoid	Monitored Solenoid Dom
4"	6"	4"	6"		(Add-on)	
<u>27343</u>	<u>27345</u>	<u>27446</u>	<u>27455</u>	<u>27439</u>	<u>28259</u>	<u>28259-USA</u>
\$17,262.65	\$19,650.32	\$15,632.28	\$18,554.36	\$7,371.44	\$7,371.44	9612.49
With Monitored Solenoid						
Pretrimmed Riser (PTR)		Pretrimmed (PTUSA)				
4"	6"	4"	6"			
<u>28245</u>	<u>28246</u>	<u>28247-USA</u>	<u>28251-USA</u>			
\$17,262.65	\$19,650.32	\$17,127.52	\$19,300.71			

Accessories

<p>Accelerator (D-2) Includes integrated anti-flood device</p> <p><u>Model D-2</u> <u>List Price</u> 09881 \$3,055.44</p>	<p>VXR Accelerator Trim Kit Includes trim components and air gauge</p> <p>24112-1 <u>List Price</u> \$692.88</p>
<p>Model LD-1 Anti-Column Device</p> <p><u>Model LD-1</u> <u>List Price</u> 14800 \$817.92 14816 \$313.08</p>	<p>EA-1 Electronic Accelerator</p> <p> 27327 <u>List Price</u> \$4,070.39</p>

Model VXD Data Center Upgradeable Pre-Trimmed Riser Assembly						
Normal Size	Pre-Trimmed Dry System Risers				Conversion Kit Part Numbers	
	Without Isolation Butterfly Valve		With Isolation Butterfly Valve		Single Interlock with Electric Release OR Double Interlock with Electric Pneu-Lectric Release	Double Interlock w/ Electric/Pneumatic Release
1-1 1/2"	27960	\$12,845.75	28384	14753	27946 1788.7409	27951
2"	27961	\$13,561.92	28385	15798		\$2,927.83
2-2 1/2"	27962	\$16,038.33	28386	19534	27947 1854.0724	27952 \$2,927.83
3"	27963	\$16,038.33	28387	17725		27953 \$2,927.83
4"	27964	\$19,404.74	28388	21061		27954
6"	27965	\$22,440.25	28389	24595		\$2,927.83
8"	27966	\$35,674.85	28390	38029		



Model F Dry Systems

Flange / Flange (Model F-1) Dry Valve				
Size	Loose Trim ¹ (galvanized)		Modular Trim ¹ (galvanized)	
3"	10158	\$2,708.25	10158P	\$3,232.25
4"	08395	\$2,767.12	08395P	\$3,291.70
6"	09456	\$2,767.12	09456P	\$3,291.70

Flange / Groove (Model F-1) Dry Valve						
Size	Valve (only)		Loose Trim ¹ (galvanized)		Modular Trim ¹ (galvanized)	
IPG	V228		V229		V230	
3"	09446	\$6,953.74	10158	\$2,708.25	10158P	\$3,232.25
4"			08395	\$2,767.12	08395P	\$3,291.70
6"			09456	\$2,767.12	09456P	\$3,291.70

Groove / Groove (Model F-2) Dry Valve				
Size	Loose Trim ¹ (galvanized)		Modular Trim ¹ (galvanized)	
IPG	V229		V230	
3"	10158	\$2,708.25	10158P	\$3,232.25
4"	08395	\$2,767.12	08395P	\$3,291.70
6"	09456	\$2,767.12	09456P	\$3,291.70





- (1) Trim includes dry valve accessory pkg (p/n 08397). See page M-4 for details.
- (2) Pre-assembled with nipples, fittings, and gauges. See technical data for details.
- (3) Pre-assembled with nipples, fittings, water supply control valve, switches, and gauges. See technical data for details.


Size	DOMESTIC TRIM ^{1,2}	
IPG	V229	
3"	10158USA	\$3,868.88
4"	08395USA	\$3,953.10
6"	09456USA	\$3,953.10

See page M-3 for accelerators and air maintenance devices. See page M-4 for additional accessories.



Accelerators / Air Maintenance Devices

Accelerator / Anti-Flood Packages (and Trim)


<p>Accelerator (D-2)</p>  <table border="1"> <thead> <tr> <th>Model D-2</th> <th>List Price</th> </tr> </thead> <tbody> <tr> <td>09881</td> <td>\$3,055.44</td> </tr> </tbody> </table> <p style="text-align: right;">V226</p>	Model D-2	List Price	09881	\$3,055.44	<p>Accelerator Trim (Model D-2) (Galvanized)</p> <table border="1"> <thead> <tr> <th>Model D-2</th> <th>List Price</th> </tr> </thead> <tbody> <tr> <td>09730</td> <td>\$710.37</td> </tr> <tr> <td colspan="2" style="background-color: #cccccc;">DOMESTIC¹</td> </tr> <tr> <th>Model D-2</th> <th>List Price</th> </tr> <tr> <td>09730USA</td> <td>\$947.15</td> </tr> </tbody> </table>  <p style="text-align: right;">V222</p>	Model D-2	List Price	09730	\$710.37	DOMESTIC¹		Model D-2	List Price	09730USA	\$947.15
Model D-2	List Price														
09881	\$3,055.44														
Model D-2	List Price														
09730	\$710.37														
DOMESTIC¹															
Model D-2	List Price														
09730USA	\$947.15														

<p>Accelerator (E-1) / Anti-Flood Device (B-1)</p>  <table border="1"> <thead> <tr> <th colspan="2"><i>E-1 Accelerator (only)</i></th> </tr> </thead> <tbody> <tr> <td>08055</td> <td>\$2,545.24</td> </tr> <tr> <th colspan="2"><i>B-1 Anti-Flood device (only)</i></th> </tr> <tr> <td>08061</td> <td>\$1,467.52</td> </tr> </tbody> </table> <p>Accelerator/Anti-Flood Package 08116 \$3,013.17 (include E-1 and B-1)</p> <p style="text-align: center;">Use only with tank-mounted air compressor and listed air maintenance device</p> <p style="text-align: right;">V226</p>	<i>E-1 Accelerator (only)</i>		08055	\$2,545.24	<i>B-1 Anti-Flood device (only)</i>		08061	\$1,467.52	<p>Accelerator / Anti-Flood Trim (galvanized)</p> <table border="1"> <thead> <tr> <th colspan="2">STANDARD</th> <th colspan="2">DOMESTIC¹</th> </tr> <tr> <th>Part #</th> <th>List Price</th> <th>Part #</th> <th>List Price</th> </tr> </thead> <tbody> <tr> <td>08264</td> <td>\$1,021.31</td> <td>08264USA</td> <td>\$1,361.73</td> </tr> </tbody> </table> <p>Includes:</p> <ul style="list-style-type: none"> - Air Gauge - 1/2" / 15mm Anti-Flood Isolation Vlv - 1/2" / 15mm Swing Check Valve - Nipples, Fittings, Plugs - Float Check Valve <p style="text-align: right;">V222</p> <p style="text-align: center;">Use with Model-F dry valve, Model-F dry valve trims, accelerator/anti-flood package</p>	STANDARD		DOMESTIC¹		Part #	List Price	Part #	List Price	08264	\$1,021.31	08264USA	\$1,361.73
<i>E-1 Accelerator (only)</i>																					
08055	\$2,545.24																				
<i>B-1 Anti-Flood device (only)</i>																					
08061	\$1,467.52																				
STANDARD		DOMESTIC¹																			
Part #	List Price	Part #	List Price																		
08264	\$1,021.31	08264USA	\$1,361.73																		

Air Maintenance Device (and trim) - IPG V226

<p>Model D-2 - Air Pressure Maintenance Device</p>  <table border="1"> <thead> <tr> <th>Size</th> <th>Part #</th> <th>List Price</th> </tr> </thead> <tbody> <tr> <td>1/4" / DN8</td> <td>02280C</td> <td>\$1,215.26</td> </tr> </tbody> </table> <p style="text-align: right;">V226</p>	Size	Part #	List Price	1/4" / DN8	02280C	\$1,215.26	<p>Model D-2 - Air Pressure Maintenance Device</p>  <table border="1"> <thead> <tr> <th>Size</th> <th>Part #</th> <th>List Price</th> </tr> </thead> <tbody> <tr> <td>1/2" / DN15</td> <td>07459</td> <td>\$2,135.55</td> </tr> <tr> <td colspan="3" style="background-color: #cccccc;">DOMESTIC¹</td> </tr> <tr> <th>Size</th> <th>Part #</th> <th>List Price</th> </tr> <tr> <td>1/2" / DN15</td> <td>07459USA</td> <td>\$2,847.38</td> </tr> </tbody> </table> <p style="text-align: right;">V226</p> <table border="1"> <thead> <tr> <th>Filter Kit</th> <th>Part #</th> <th>List Price</th> </tr> </thead> <tbody> <tr> <td>V249</td> <td>03007A</td> <td>\$75.82</td> </tr> </tbody> </table>	Size	Part #	List Price	1/2" / DN15	07459	\$2,135.55	DOMESTIC¹			Size	Part #	List Price	1/2" / DN15	07459USA	\$2,847.38	Filter Kit	Part #	List Price	V249	03007A	\$75.82
Size	Part #	List Price																										
1/4" / DN8	02280C	\$1,215.26																										
Size	Part #	List Price																										
1/2" / DN15	07459	\$2,135.55																										
DOMESTIC¹																												
Size	Part #	List Price																										
1/2" / DN15	07459USA	\$2,847.38																										
Filter Kit	Part #	List Price																										
V249	03007A	\$75.82																										

Air Compressor - IPG V226

	<p>Model H-1 Maintenance Air Compressor</p> <table border="1"> <thead> <tr> <th>Model</th> <th>Part #</th> <th>List Price</th> </tr> </thead> <tbody> <tr> <td>115V single phase, 60 Cycle AC - Service Factor Amperage: 6.8, 3.03 SCFM</td> <td>25833</td> <td>\$7,174.05</td> </tr> <tr> <td>208-230V single phase, 60 Cycle AC - Service Factor Amperage: 3.4, 3.03 SCFM</td> <td>25834</td> <td>\$7,174.05</td> </tr> <tr> <td>208-230V single phase, 50 Cycle AC - Service Factor Amperage: 3.4, 2.50 SCFM</td> <td>25835</td> <td>\$7,174.05</td> </tr> </tbody> </table>	Model	Part #	List Price	115V single phase, 60 Cycle AC - Service Factor Amperage: 6.8, 3.03 SCFM	25833	\$7,174.05	208-230V single phase, 60 Cycle AC - Service Factor Amperage: 3.4, 3.03 SCFM	25834	\$7,174.05	208-230V single phase, 50 Cycle AC - Service Factor Amperage: 3.4, 2.50 SCFM	25835	\$7,174.05
Model	Part #	List Price											
115V single phase, 60 Cycle AC - Service Factor Amperage: 6.8, 3.03 SCFM	25833	\$7,174.05											
208-230V single phase, 60 Cycle AC - Service Factor Amperage: 3.4, 3.03 SCFM	25834	\$7,174.05											
208-230V single phase, 50 Cycle AC - Service Factor Amperage: 3.4, 2.50 SCFM	25835	\$7,174.05											

Accessories (Included with standard dry valve trim)

Dry Valve Accessory Package

Includes:

- Drip Check Valve
- Drain Cup
- Valve Reset Bar
- 7/32" / 5mm Restricted Orifice
- 1/2" / 15mm Spring Loaded Check Valve
- 1/4" / 8mm Restricted Orifice
- Tubing Connector

Part Number	List Price
08397	\$1,003.65

IPG V226

Water Gauge

0-300 psi (2,068 kPa)



1/4" / DN8

VWATERSF

\$34.98

SR295

Air Gauge

0-80 psi (554 kPa)



1/4" / DN8

VAIRSF

\$34.98

SR295

Globe Valve for Gauges (side outlet)



1/4" / DN8

76V-25

\$26.85

SR140

Alarm Test/Alarm Shut-Off Valve

(1/2" Ball Valve)



1/2" / DN15

10355USA

\$76.90

V226

Drain Cup



1 1/2" / DN40

01019B

\$30.80

V226

Drain Check Valve



1/2" / DN15

05781A

\$160.03

V226

Drip Check Valve - Model D-3

Velocity Check



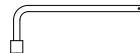
3/4" / DN20

10732

\$285.91

V226

Dry Valve Wrench & Reset Bar



02977BWB

\$390.59

V226

Swing Check Valve



1/2" / DN15

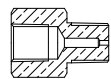
KT403W-50

\$187.04

SR140

Restricted Orifice

1/16" / 1.5mm



1/4" / DN8

10110

\$62.22

V226

Restricted Orifice

7/32" / 5mm



1/2" / DN15

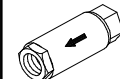
06980A

\$34.08

V226

Spring Loaded Check Valve

(with viton disc)



1/2" (DN15)

12WILC

\$379.04

SR140

Angle Valve

1 1/2" / DN40

Use with 3"

03937S

\$338.51

2" / DN50

Use with 4"

126SUL-0200

\$243.96

Use with 6"

126SUL-0200

\$243.96



Anti-Column Device (Model LD-1)



14800

\$817.92

*install in vertical position

V226

Install on dry systems where potential for water column exists downstream of dry valve

EA-1 Electronic Accelerator



27327

\$3,634.27

V226

Anti-Column Device Trim

14816

\$313.08

V226

Float Check Valve (Model B-1/B-2)



Brass - 1/2" / DN15 (B-1)

Corrosion Resistant (B-2)

12116

\$528.75

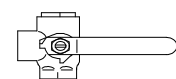
12084

\$1,294.66

V226

Accessories for Old Style Trim

Alarm Test/Alarm Shut-Off Valve



1/2" (DN15)

06174A

\$629.32

IPG V226

Drip Check Valve (Model D-2)

(for Model B-1 accelerator)



10731

\$447.09

V226