



TECHNICAL DATA

PNEUMATIC DISCHARGE PRESSURE SWITCH

The Viking Corporation, 210 N Industrial Park Drive, Hastings MI 49058

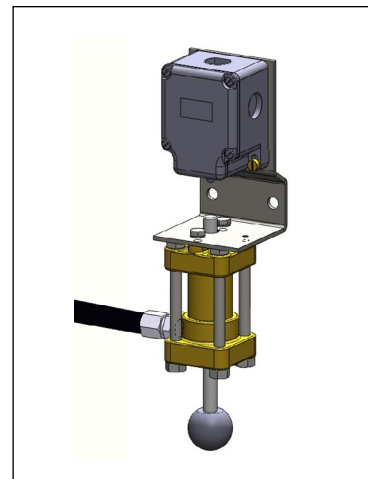
Telephone: 269-945-9501 Technical Services: 877-384-5464 Fax: 269-818-1680 Email: techsvcs@vikingcorp.com

Visit the Viking website for the latest edition of this technical data page: www.vikinggroupinc.com

1. DESCRIPTION

For Viking VSH1230 and Oxexo Fire Extinguishing Systems, when a manual release device is installed, a pneumatically actuated limit switch (pressure switch) is required on the pipeline to indicate a release per NFPA 2001.

- As extinguishing agent enters the pipeline, the pressure of the agent opens or closes the floating contacts of the limit switch (depending on whether it is set for N.O. or N.C. operation).
- The status of this contact can be monitored by the agent release control panel.
- The dry contacts can be used for different purposes, triggered via the pneumatic discharge pressure switch when connected electronically to the detection system.
- These dry contacts can be used for alarm notification, shutting dampers, closing doors, etc.
- The pushbutton on the pneumatic discharge pressure switch is for testing purposes.
- The pilot line hose connects the pneumatic discharge pressure switch to the pipeline.



2. LISTINGS AND APPROVALS



UL Listed - EX5248 (Oxexo PR, Oxexo CF, and VSH1230)



FM Approved (Oxexo PR, Oxexo CF, and VSH1230)



WARNING: Cancer and Reproductive Harm-
www.P65Warnings.ca.gov

3. TECHNICAL DATA

Specifications - Part Number 826758D

Discharge Pressure Switch:

- Switch System: 2 adjustable contacts
- Contact Types:
 - Standard setting is 2 normally open (NO)
 - Can be set for 2 normally closed (NC)
- Working Pressure: 2030 psi (140 bar)
- Maximum Rated Voltage: 500V
- Maximum Rated Current: 16A
- IP 65 Enclosure
- Temperature range: -4 °F to 122 °F (-20 °C to +50 °C)

Material Standards

Discharge Pressure Switch:

- Housing: Alloy die-cast metal
- Bracket: Steel
- Bolts: Zinc plated steel
- Cylinder: Brass
- Contact Material: Silver
- Pushbutton: Plastic
- Hose: Rubber hydraulic hose with galvanized steel ends
- Hose Adapters: Galvanized steel

NOTE: The Pneumatic Discharge Pressure Switch is factory set for NO operation. It may be switched to NC operation: Use a flathead screwdriver to remove the switch cover and adjust the two contacts. Verify that the switch is set for NC operation and then replace the switch cover.

TABLE 1: PART NUMBERS

Description	Part No.
Pneumatic Discharge Pressure Switch	826758D



TECHNICAL DATA

PNEUMATIC DISCHARGE PRESSURE SWITCH

The Viking Corporation, 210 N Industrial Park Drive, Hastings MI 49058

Telephone: 269-945-9501 Technical Services: 877-384-5464 Fax: 269-818-1680 Email: techsvcs@vikingcorp.com

Visit the Viking website for the latest edition of this technical data page: www.vikinggroupinc.com

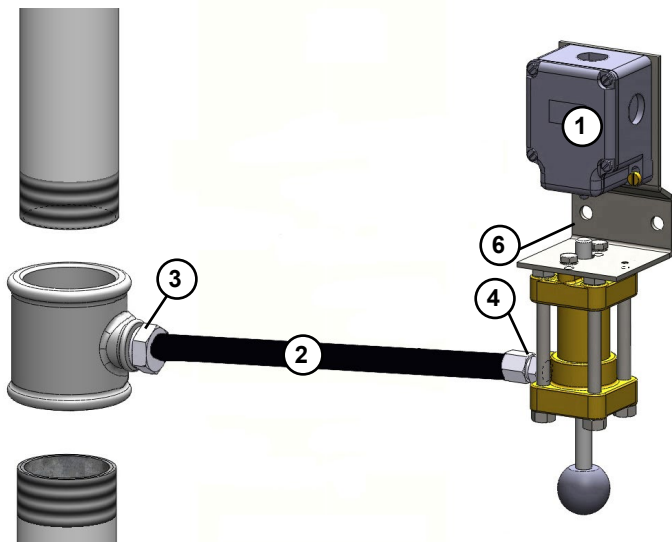


TABLE 2: Components	
Ref	Description
1	Pneumatic Discharge Pressure Switch
2	Hose 39" (1,000 mm) long
3	Adapter, 1/4" NPT to M12 x 1.5 Hose
4	Adapter, Pressure Switch G 1/4 to M12 x 1.5 Hose
5	Adapter, F 1/4" NPT X M 1/2" NPT
6	Wall mount bracket
7	Pushbutton
8	Switch cover

Figure 1: Pneumatic Discharge Pressure Switch Components

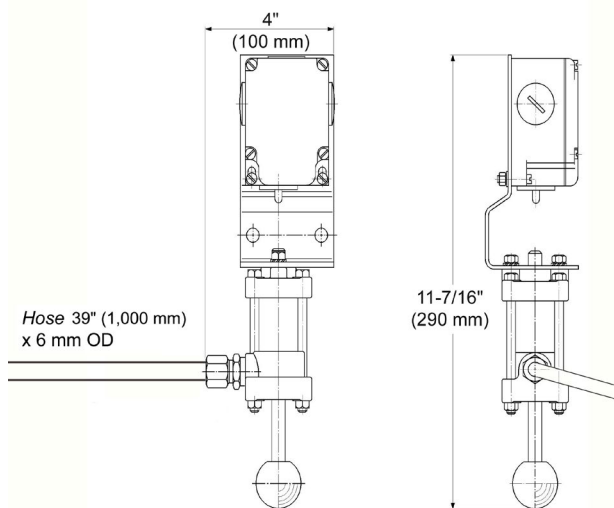


Figure 2: Pneumatic Discharge Pressure Switch Dimensions

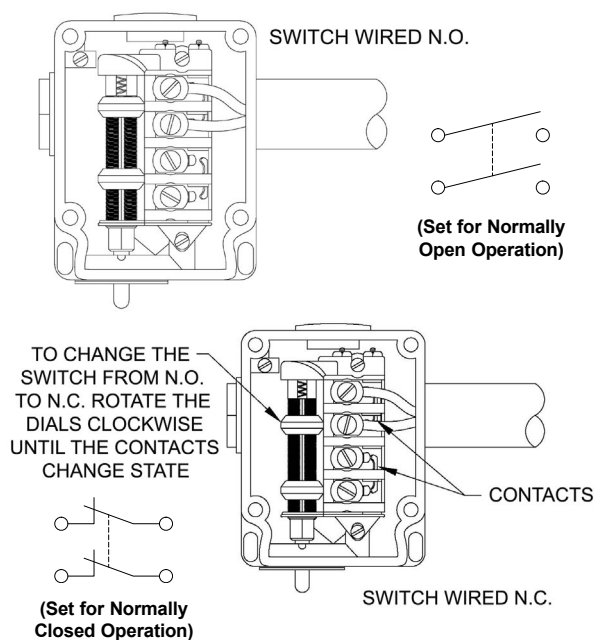


Figure 3: Pressure Switch Wiring Diagrams