



# Pipe couplings and fittings

## Flange Adaptors



### Approvals



Nominal size		Model	Pipe OD mm (Inch)	Part no.		Approvals				Weight
DN	Inch			Red paint similar RAL 3000	Galvanized	VdS	LPCB	FM	UL	kg (lbs)
50	2	321G	60.3 (2.37)	919810	919864	C	C	F	D	1.46 (3.22)
65	2-1/2	321GA	73.0 (2.87)	919818	919872	-	-	F	D	1.94 (4.28)
65	3 OD	321G	76.1 (3.00)	919811	919865	C	C	F	D	2.01 (4.43)
80	3	321G	88.9 (3.50)	919812	919866	C	C	F	D	2.09 (4.61)
100	4	321G	114.3 (4.50)	919813	919867	C	C	F	D	2.41 (5.31)
125	5-1/2 OD	321G	139.7 (5.5)	919814	919868	C	C	D	D	3.23 (7.12)
150	6-1/2 OD	321G	165.1 (6.50)	919815	919869	-	C	F	D	3.74 (8.25)
150	6	321G	168.3 (6.63)	919816	919870	C	C	F	D	4.05 (8.93)
200	8	321G	219.1 (8.63)	919817	919871	C	C	F	D	6.54 (14.40)
250	10	321G	273.0 (10.75)	919826	919881	C	-	D	B	9.74 (21.50)
300	12	321G	323.9 (12.75)	919827	919883	C	-	D	B	12.80 (28.30)

OD = Outside Diameter

Working pressure: **A** = max. 12.1 bar (175 psi) / **B** = max. 15.5 bar (225 psi) / **C** = max. 16 bar (232 psi) / **D** = max. 20.7 bar (300 psi) / **E** = max. 25 bar (363 psi) / **F** = max. 34.5 bar (500 psi) / - = no approvals

### Technical data

Material.....ductile cast iron

#### Finish:

- Red paint ..... liquid painting similar RAL 3000
- Galvanized ..... hot dip galvanized

### Application

Water based fire-suppression systems

### Maintenance

Visual check

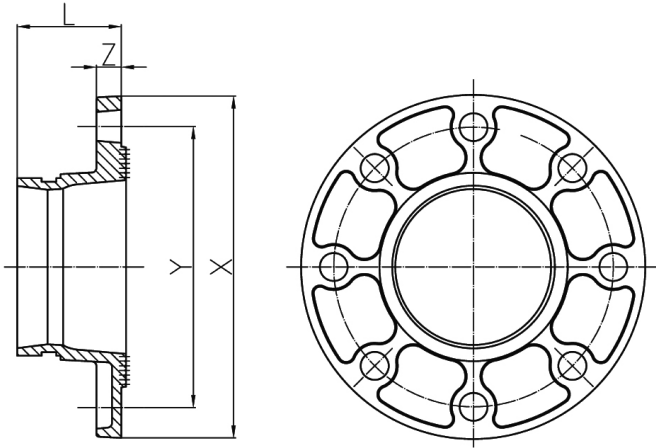


# Pipe couplings and fittings

## Flange Adaptors

### Dimensional drawing

Dimensions in mm (inch)



DN / mm	Inch	L (mm / inch)	X (mm / inch)	Y (mm / inch)	Z (mm / inch)	Flange bolts
50 / 60.3	2	65 (2.56)	165 (6.50)	125 (4.92)	16 (0.63)	4-M16
65 / 73.0	2-1/2	65 (2.56)	185 (7.28)	139.7 (5.50)	16 (0.63)	4-5/8
65 / 76.1	3 OD	65 (2.56)	185 (7.28)	145 (5.70)	16 (0.63)	4-M16
80 / 88.9	3	65 (2.56)	200 (7.87)	160 (6.30)	16 (0.63)	8-M16
100 / 114.3	4	70 (2.76)	220 (8.66)	180 (7.09)	16 (0.63)	8-M16
125 / 139.7	5-1/2 OD	70 (2.76)	250 (9.84)	210 (8.27)	18 (0.71)	8-M16
150 / 165.1	6-1/2 OD	70 (2.76)	285 (11.22)	240 (9.45)	18 (0.71)	8-M20
150 / 168.3	6	70 (2.76)	285 (11.22)	240 (9.45)	18 (0.71)	8-M20
200 / 219.1	8	80 (3.15)	340 (13.39)	295 (11.61)	19 (0.75)	12-M20
250 / 273.0	10	85 (3.35)	405 (15.94)	355 (13.98)	21 (0.83)	12-M24
300 / 323.9	12	90 (3.54)	460 (18.11)	410 (16.14)	24 (0.94)	12-M24

Å800 / 2015 P11.194.260 - 17V  
 The contents of this publication are subject to modifications without notice. All rights reserved.



# Pipe couplings and fittings

## Hinged Flange Adaptors



### Approvals



ANSI Flange - Model 321A									
Nominal size		Pipe OD	Part no.		Approvals				Weight approx.
DN	Inch	mm (Inch)	Red paint	Galvanized	VdS	LPCB	FM	UL	kg (lbs)
50	2	60.3 (2.38)	919800	919849	-	-	D	D	1.41 (3.11)
65	2-1/2	73.0 (2.88)	919801	919851	-	-	D	D	1.89 (4.17)
80	3	88.9 (3.50)	919802	919853	-	-	D	D	1.99 (4.39)
100	4	114.3 (4.50)	919803	919856	-	-	D	D	2.66 (5.86)
125	5	141.3 (5.56)	919804	919858	-	-	D	-	3.51 (7.74)
150	6	168.3 (6.63)	919805	919861	-	-	D	-	4.60 (10.10)
200	8	219.1 (8.63)	919806	919862	-	-	D	A	5.71 (12.60)
250	10	273.0 (10.75)	919807	919863	D		A		7.82 (17.20)

PN Flange - Model 321									
DN	Inch	mm (Inch)	Red paint	Galvanized	VdS	LPCB	FM	UL	Weight approx. kg (lbs)
50	2	60.3 (2.38)	919790	919836	C	C	D	D	1.61 (3.55)
65	3 OD	76.1 (3.00)	919791	919837	C	C	D	D	1.90 (4.19)
80	3	88.9 (3.50)	919792	919838	C	C	D	D	2.16 (4.76)
100	4	114.3 (4.50)	919793	919839	C	C	D	D	2.61 (5.75)
125	5-1/2 OD	139.7 (5.50)	919794	919840	C	C	D	B	3.98 (8.77)
150	6-1/2 OD	165.1 (6.50)	919795	919841	-	C	D	D	3.97 (8.75)
	6	168.3 (6.63)	919796	919842	C	C	D	D	4.60 (10.10)
200	8	219.1 (8.63)	919797	919843	C	C	D	D	8.10 (17.90)
250	10	273.0 (10.75)	919798	919845	C	-	D	B	10.70 (23.60)
300	12	323.9 (12.750)	919799	919847	-	-	D	B	9.50 (21.00)

OD = Outside Diameter

Working pressure: **A** = max. 12.1 bar (175 psi) / **B** = max. 15.5 bar (225 psi) / **C** = max. 16 bar (232 psi) / **D** = max. 20.7 bar (300 psi) /

**E** = max. 25 bar (363 psi) / **F** = max. 34.5 bar (500 psi) / - = no approvals

### Technical data

Ambient temperature .....-34 °C to 110 °C (-30 °F to 230 °F)

Tightening torque of lateral bolts/nuts:

- DN50 - DN80 / DN200 - DN250 ..... 40 - 60 Nm (30 - 45 lb-ft)

- DN100 - DN150 ..... 110 - 135 Nm (80 - 100 lb-ft)

### Material / surface

Split flange ..... ductile cast iron

- Red paint ..... liquid painting similar RAL 3000

- Galvanized ..... hot dip galvanized

Gasket ..... EPDM

Bolts and nuts ..... heat-treated carbon steel,

..... zinc electroplated with yellow chromate

### Application

Water based fire-suppression systems

### Note

EPDM gaskets must never be brought into contact with lubricants or oils containing mineral oils, as well as other materials containing mineral oils (e.g. fuels or cleaning agents).

### Lubricant for assembly

Use suitable lubricants for the EPDM sealing only;

### Maintenance

Visual check

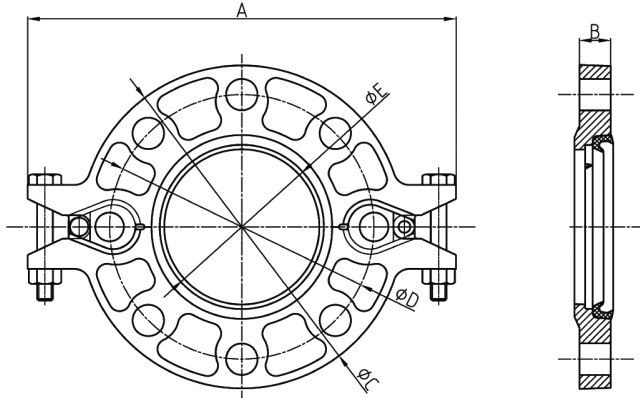


# Pipe couplings and fittings

## Hinged Flange Adaptors

### Dimensional drawing

Dimensions in mm (inch)



ANSI Flange - Model 321A								
DN	Inch	A	B	$\phi C$	$\phi D$	$\phi E$	Bolts / Nuts	Flange bolts
50 / 60.3	2	206 (8.11)	19 (0.75)	152 (5.98)	121 (4.76)	57.5 (2.26)	M10x50	4-5/8
65 / 73.0	2-1/2	230 (9.05)	19 (0.75)	178 (7.00)	140 (5.51)	69.8 (2.74)	M10x50	4-5/8
80 / 88.9	3	246 (9.68)	19 (0.75)	191 (7.52)	152 (5.98)	85.5 (3.37)	M10x50	4-5/8
100 / 114.3	4	280 (11.02)	19 (0.75)	229 (9.00)	191 (7.52)	110.5 (4.35)	M12x55	8-5/8
125 / 141.3	5	320 (12.60)	22 (0.87)	254 (10.00)	216 (8.50)	137.4 (5.41)	M12x65	8-3/4
150 / 168.3	6	346 (13.62)	22 (0.87)	280 (11.00)	241.3 (9.50)	164.3 (6.47)	M12x65	8-3/4
200 / 219.1	8	414.3 (16.31)	30 (1.18)	341.4 (13.44)	298.5 (11.75)	214.9 (8.46)	M10x70	8-3/4
250 / 273.0	10	481.2 (18.94)	30 (1.19)	405.6 (15.97)	361.95 (14.25)	268.9 (10.59)	M10x70	12-7/8

PN Flange - Model 321									
DN	Inch	A	B	$\phi C$	$\phi D$	$\phi E$	Bolts / Nuts	SW	Flange bolts
50 / 60.3	2	220 (8.66)	18.5 (0.73)	165 (6.50)	125 (4.92)	57.5 (2.26)	M10x50	16	4-M16
65 / 76.1	3 OD	235 (9.25)	18.5 (0.73)	185 (7.28)	145 (5.71)	72.7 (2.86)	M10x50	16	4-M16
80 / 88.9	3	255 (10.04)	18.5 (0.73)	195 (7.68)	160 (6.30)	85.5 (3.37)	M10x50	16	8-M16
100 / 114.3	4	279 (10.98)	18.5 (0.73)	224 (8.82)	180 (7.09)	110.5 (4.35)	M10x50	16	8-M16
125 / 139.7	5-1/2 OD	320 (12.60)	23.0 (0.91)	250 (9.84)	210 (8.27)	135.5 (5.33)	M12x65	22	8-M16
150 / 165.1	6-1/2 OD	346 (13.62)	21.5 (0.85)	280 (11.00)	240 (9.45)	160.8 (6.33)	M12x65	22	8-M20
150 / 168.3	6	346 (13.62)	24.0 (0.94)	280 (11.00)	240 (9.45)	164.3 (6.47)	M12x65	22	8-M20
200 / 219.1	8	414.3 (16.31)	30.0 (1.18)	340 (13.39)	295 (11.61)	214.9 (8.46)	M10x70	16	12-M20
250 / 273.0	10	480 (18.90)	25.5 (1.00)	405 (15.94)	355 (13.98)	268.9 (10.59)	M10x70	16	12-M24
300 / 323.9	12	530.5 (20.88)	25.5 (1.00)	460 (18.11)	410 (16.14)	318.9 (12.56)	M10x70	16	12-M24

Å800 / 2015 P11-194, 260 - 16V  
 The contents of this publication are subject to modifications without notice. All rights reserved.