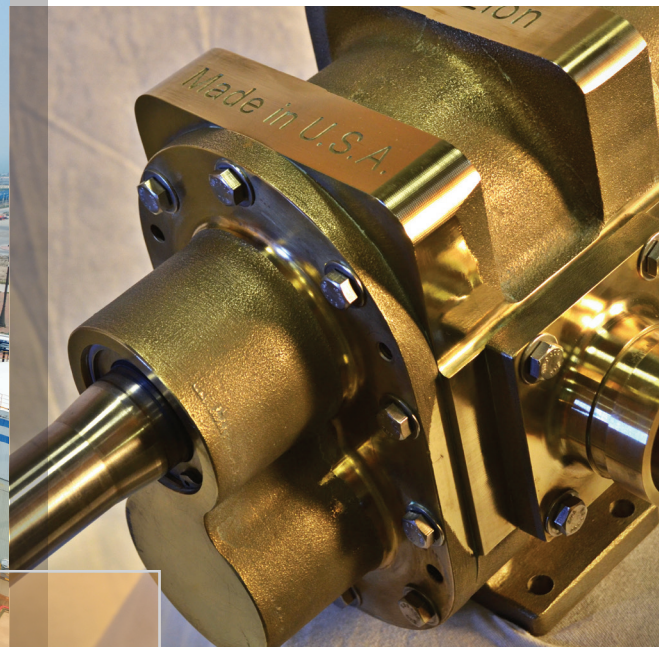




Trusted above all.

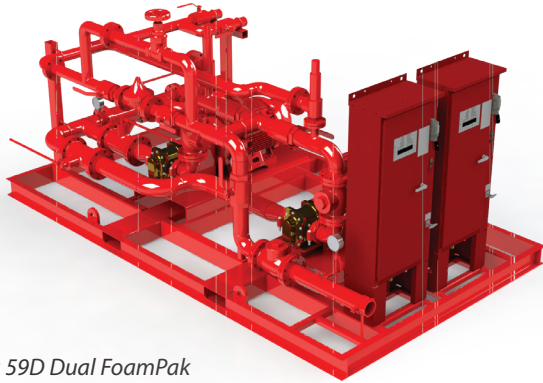
FoamPak

Integrated Foam Pumping Assembly



Foam Pumps

Foam system flexibility



Series 59D Dual FoamPak

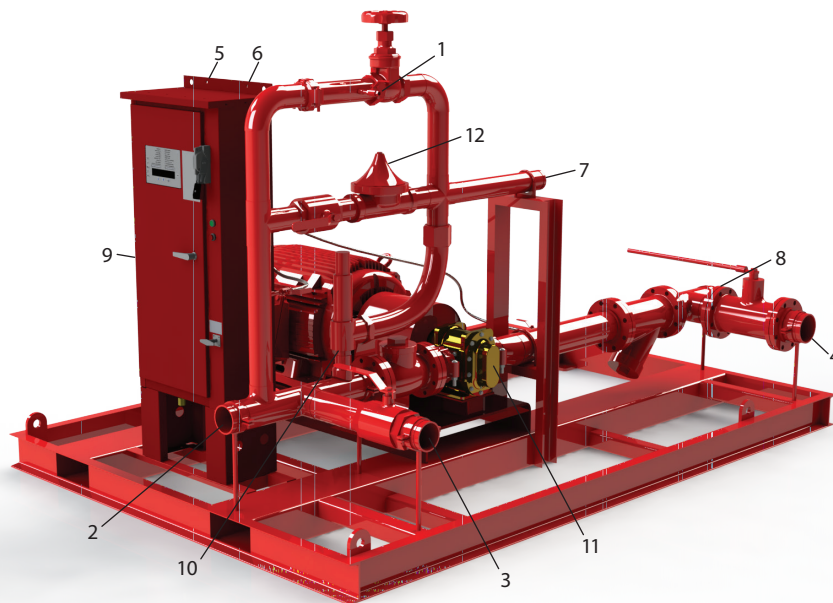
The Viking FoamPak foam pumping assembly is a foam concentrate delivery system incorporating UL Listed and FM Approved components. FoamPak can supply foam concentrate to injection piping running above or below ground and over long distances.

Viking's FoamPak is the ideal solution when a positive pressure proportioning foam system is the preferred method, or when a central foam reserve with multiple remote injection points is required for ultimate foam system flexibility.

Viking FoamPak System

The Viking FoamPak is a pre-fabricated and tested foam pumping system incorporating a foam pump, pre-wired pump controller, pressure sustaining valve and pressure relief valve.

The system piping is of stainless steel construction and includes the supply and discharge piping connections, auxiliary flushing connections, concentrate discharge check valve, pressure sustaining valve, pump casing relief valve and concentrate supply strainer.



1. Vent/Foam sample outlet
2. Foam outlet
3. Flush outlet
4. Flush inlet
5. Suction pressure gauge
6. Discharge pressure gauge
7. Foam return
8. System isolation valve
9. Pump controller
10. Pressure relief valve
11. Foam pump
12. Pressure sustaining valve

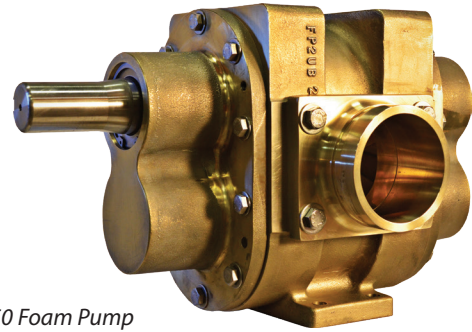
Series 59S Single FoamPak

Foam pump

The integrated UL Listed and FM Approved positive displacement rotary gear foam pump is capable of withstanding any of the corrosive environments or viscosities that are present with foam concentrates. It is also capable of dry operation. A 6-year foam pump manufacturer warranty is included. The foam pump and FoamPak is 100% compliant with NFPA 11 and 20 standards.



Viking VLF Inline Balanced Pressure Proportioner

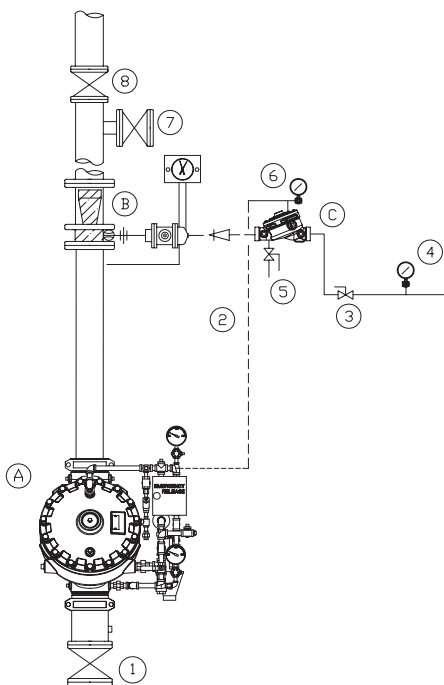


3" Series 50 Foam Pump

Viking FoamPak and ILBP

The Viking FoamPak can be used with the Viking model VLF Inline Balanced Pressure Proportioner (ILBP) which is UL Listed and/or FM Approved with most Viking Foam Concentrates.

When used with an ILBP, the FoamPak assembly accurately pumps and proportions foam concentrate into a water supply producing a foam solution for distribution to the fire protection system's discharge devices such as monitors, grate nozzles or foam chambers.



- A. Viking F1 Deluge Valve
- B. Viking VLF ILBP
- C. Viking F2 Halar Concentrate Valve (CCV)
- 1. Water Supply Control Valve
- 2. CCV Priming Line
- 3. Foam Concentrate Shut-off Valve
- 4. Foam Concentrate supply from FoamPak
- 5. CCV Foam Concentrate Drain Valve
- 6. CCV Priming Gauge
- 7. Foam Solution Test Valve
- 8. Discharge Riser Isolation Valve

Typical Deluge Riser with ILBP Foam Concentrate injection point

Features, applications and technical overview

FoamPak at a glance

Key features and advantages

- Preassembled skid with UL Listed and FM Approved components for fast and economical installation.
- Single or multiple system applications .
- Pump controllers at 220/230 V, 380/415 V, 460/480 V, 50 Hz or 60 Hz.
- Controller enclosure ratings: NEMA 2 - standard (NEMA 3R, NEMA 4 or NEMA 4X available upon request).
- Motors: ODP IP54 with optional IP55 (TEFC), IP65 and EEXD ratings.
- Available with a wide range of standard and optional configurations.
- Pump drive options like diesel engine or water turbine available.
- ILBP can be pre-assembled onto skid.
- Factory assembled and tested to UL, FM & NFPA 11 and 20 requirements.
- Part of a complete foam system package from one trusted source.

Typical applications

Viking FoamPak pump assemblies are a critical part of fixed foam fire suppression systems found in the most demanding applications such as:

- Petro-chemical facilities
- Flammable & combustible liquid storage
- Tank farms
- Power plants
- Military installations
- Jetty loading areas

Technical overview

*Foam Concentrate Flow Range**

Series 5: 30 - 55 US gpm
Series 13: 55 - 110 US gpm
Series 26: 90 - 180 US gpm
Series 50: 185 - 300 US gpm
Series 59: 250 - 420 US gpm

* Please see individual datasheets for specific flows

Connection Size

Grooved 1", 1.5", 2", 3", 4", 6"

Pressure Range

100 psi (6.9 bar) to 261 psi (18 bar)

Configuration

Electric duty – 1 pump and motor
Electric duty with electric standby
Electric duty with diesel standby
Electric duty with hydraulic standby

Materials

Pump:	Bronze + duplex stainless steel shafts
Frame:	Carbon steel
Pipework:	Stainless steel

Finish

Painted Flame Red RAL3000



For further information, please contact your local Viking sales office or refer to the technical documentation.
The contents of this publication are subject to modifications without notice.

The Viking Corporation

210 N Industrial Park Drive, Hastings, MI 49058

Telephone: (269) 945-9501

Email: products@vikingcorp.com

www.vikinggroupinc.com

Trusted above all.™

