

# CORRinSITE™

## Model 7800

WWW.CORRINSITE.COM

### Mechanical Tee Corrosion Monitor

The CORRinSITE™ Model 7800 Corrosion Monitor was developed in response to the increase of corrosion-related failures in both wet and dry fire protection systems.

Once installed in the wet or dry system the M7800 Corrosion Monitor corrodes at the same rate of the pipe. When the monitor corrodes beyond it's 0.040" limit moisture penetrates the sealed chamber and transforms the brilliant white sight glass to fluorescent orange which indicates a corrosion problem and a need for further inspection of the pipe.



1. Mechanical Tee
2. Corrosion Monitoring Plug

Tee Sizes:

2"	2½"	3"	4"	6"	8"
----	-----	----	----	----	----

Other sizes available upon request

### Specifications

Service Pressure.....300 PSI  
Operating Temp.....-40° to 200° F  
Material.....Mild Carbon Steel  
Wear Dimension .....0.040"

### Painted

Item ID	Item Description
7820MTP	2" Painted Mechanical Tee
7825MTP	2.5" Painted Mechanical Tee
7830MTP	3" Painted Mechanical Tee
7840MTP	4" Painted Mechanical Tee
7860MTP	6" Painted Mechanical Tee
7880MTP	8" Painted Mechanical Tee

To replace worn or damaged plug contact AGF

### Galvanized

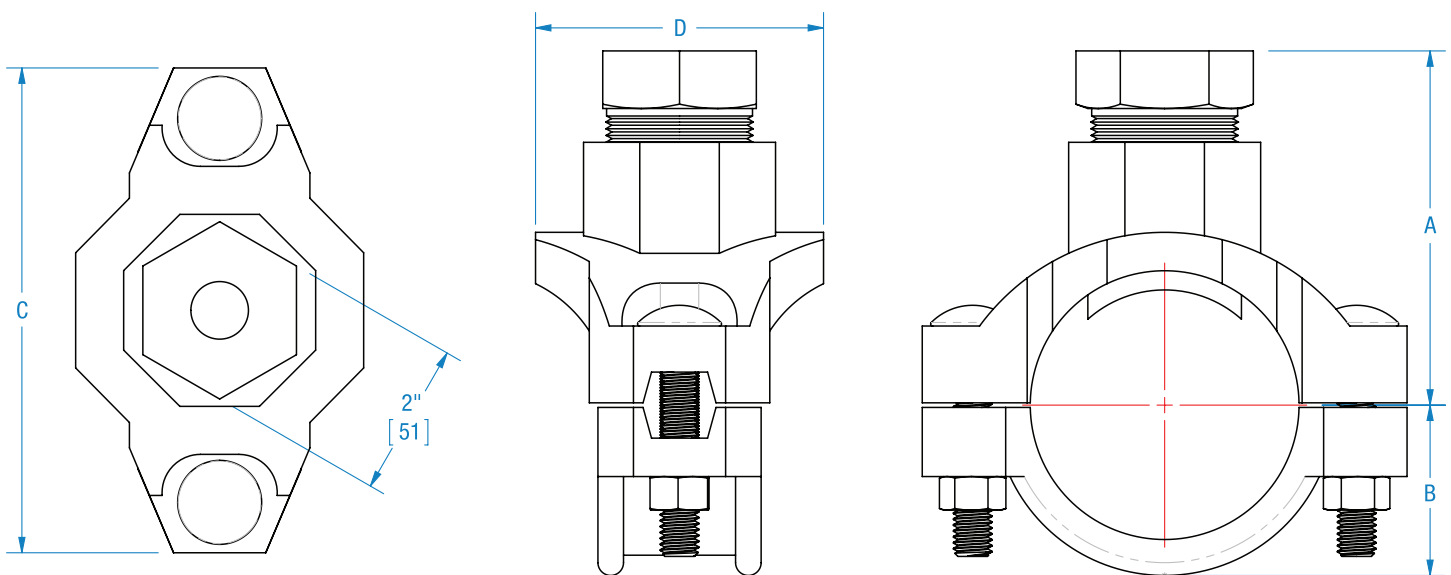
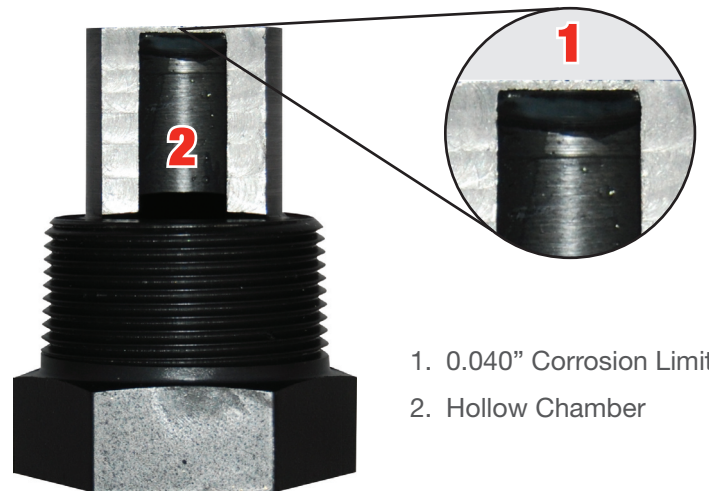
Item ID	Item Description
7820MTG	2" Galvanized Mechanical Tee
7825MTG	2.5" Galvanized Mechanical Tee
7830MTG	3" Galvanized Mechanical Tee
7840MTG	4" Galvanized Mechanical Tee
7860MTG	6" Galvanized Mechanical Tee
7880MTG	8" Galvanized Mechanical Tee



**Reliability, Versatility, Code Compatibility**

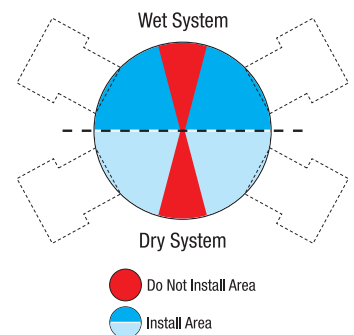
## Model 7800 Dimensions

ITEM ID	SIZE	A	B	C	D
7820	2"	5 <sup>15</sup> / <sub>16</sub> " (100 mm)	1 <sup>11</sup> / <sub>16</sub> " (43 mm)	5 <sup>5</sup> / <sub>16</sub> " (135 mm)	3 <sup>1</sup> / <sub>4</sub> " (82 mm)
7825	2 <sup>1</sup> / <sub>2</sub> "	4 <sup>3</sup> / <sub>16</sub> " (106 mm)	1 <sup>7</sup> / <sub>8</sub> " (47 mm)	5 <sup>7</sup> / <sub>8</sub> " (150 mm)	3 <sup>5</sup> / <sub>8</sub> " (91 mm)
7830	3"	4 <sup>5</sup> / <sub>8</sub> " (117 mm)	2 <sup>1</sup> / <sub>4</sub> " (56 mm)	6 <sup>3</sup> / <sub>16</sub> " (160 mm)	3 <sup>3</sup> / <sub>4</sub> " (95 mm)
7840	4"	5 <sup>5</sup> / <sub>16</sub> " (134 mm)	2 <sup>5</sup> / <sub>8</sub> " (67 mm)	7 <sup>3</sup> / <sub>8</sub> " (187 mm)	3 <sup>13</sup> / <sub>16</sub> " (96 mm)
7860	6"	6 <sup>7</sup> / <sub>16</sub> " (163 mm)	3 <sup>3</sup> / <sub>4</sub> " (95 mm)	9 <sup>3</sup> / <sub>4</sub> " (247 mm)	3 <sup>13</sup> / <sub>16</sub> " (96 mm)
7880	8"	8 <sup>3</sup> / <sub>16</sub> " (208 mm)	4 <sup>7</sup> / <sub>8</sub> " (124 mm)	12 <sup>5</sup> / <sub>8</sub> " (320 mm)	4 <sup>1</sup> / <sub>8</sub> " (105 mm)



## Model 7800 Installation and Orientation

The CORRINSITE™ Model 7800 Mechanical Tee can be installed virtually anywhere on a wet or dry fire system. AGF recommends near water mains, at the end of branch lines, or in areas where corrosion has been a problem. When installing horizontally on a wet system, the monitor's sight glass should be facing up (dark blue area), and on a dry system the sight glass should face down (light blue area).



**Patent Pending**



**AGF Manufacturing Inc.**  
100 Quaker Lane, Malvern, PA 19355  
Phone: 610-240-4900  
Fax: 610-240-4906  
[www.agfmanufacturing.com](http://www.agfmanufacturing.com)

Job Name: \_\_\_\_\_  
Architect: \_\_\_\_\_  
Engineer: \_\_\_\_\_  
Contractor: \_\_\_\_\_