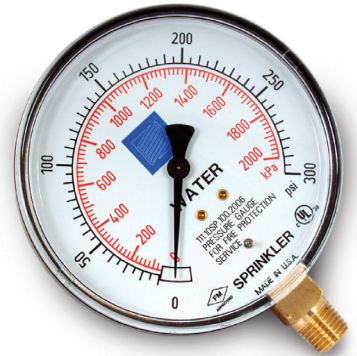


Description

FPPI pressure gauges feature an impact and corrosion resistant case made from ABS (plastic). Features phosphor bronze bourdon tube movement with white enameled brass dial face with large numbers for easy reading. Dual scale to 300 PSI/2000Kpa. UL/ULc Listed (Sprinkler Gauge Model 111.10SP, UL Listed file EX5232) and FM Approved.



Applications

- Fire sprinkler systems
- Suitable for all media that will not obstruct the pressure system or attack copper alloy parts

Special Features

- UL-listed (UL-393), United States and Canada (Sprinkler Gauge Model 111.10SP, UL Listed file EX5232)
- Factory Mutual (FM) approved
- Reliable and economical

Standard Features

Design

EN 837-1 & ASME B40.100

Sizes

4" (100 mm)

Accuracy class

± 3 $\frac{2}{3}$ % of span
(ASME B40.100 Grade B)

Ranges

0/80 psi, retard to 250 psi (air)
0/300 psi (air, water, air/water)

Working Pressure

Steady: $\frac{3}{4}$ of full scale value
Fluctuating: $\frac{2}{3}$ of full scale value
Short time: full scale value

Operating Temperature

Ambient: -40°F to 140°F
(-40°C to 60°C)
Media: 140°F (+60°C) maximum

Temperature Error

Additional error when temperature changes from reference temperature of 68°F (20°C) +0.4% for every 18°F (10°C) rising or falling. Percentage of span.

Specifications

Bourdon Tube

Material: copper alloy C-type

Pressure Connection

Material: copper alloy
 $\frac{1}{4}$ " NPT lower mount (LM)

Movement

Copper alloy

Dial

White aluminum with stop pin;
black and red lettering

Pointer

Black aluminum

Case

Black polycarbonate

Window

Snap-in clear polycarbonate



3198 LIONSHEAD AVE
CARLSBAD, CA 92010
TEL + 1 760 599-1168
+ 1 800 344-1822
FAX + 1 800 344-3775